



# BEEFMASTER BULL SALE

# 2.24.2024

12:00 NOON | WASHINGTON COUNTY FAIRGROUNDS  
BRENHAM, TEXAS

## SELLING 100

*PERFORMANCE TESTED, RANGE READY, BEEFMASTER BULLS FROM THE  
BREED'S LEADING GENETICS.*



*Giving You the Maternal Advantage,*  
**A WHOLE CALF CROP AT A TIME.**

[www.BEEFMASTERADVANTAGEPROGRAM.com](http://www.BEEFMASTERADVANTAGEPROGRAM.com)





# ADVANTAGE PLUS PRODUCERS

We are very pleased and honored that the following breeders have participated in the test and sale in a unified effort to provide you, the customer, with the very best genetics possible to enhance your program.

### Arrowhead Ranch

Bob & Bonnie Siddons  
Tilden, TX

### CG Farms

Matt & Brandi Collier  
Independence, TX

### Cross Creek Ranch

Clayton & Kelli Collier  
Brenham, TX

### H Bar Beefmasters

Greg & Amy Hendrix  
Livingston, TX

### New Cut Farms

Cliff & Pam Christopher  
Athens, AL

### Swinging B Ranch Beefmasters

Machie & Norma Jean Bounds  
Axtell, TX

### V - Seven Beefmasters

Melvin & Marilyn Scherer  
Victoria, TX

### Walker Beefmasters

Ray Walker  
Big Spring, TX

### C.B. Rockefeller Ranch

Travis Graybeal  
Leroy, KS

### Circle WL Beefmasters

Ken & Phillip Walther Families  
Giddings, TX

### DK 5 Bar Ranch

David & Kachel Mullinax  
Cypress, TX

### H.T. Chapman Beefmasters

Tim & Debbie Chapman  
Rockport, TX

### Pro Ventures, LLC

Elton & Joey Landry  
Sunset, LA

### TND Beefmasters

Ty Duesterheft  
Maxwell, TX

### Walking M Cattle Co.

Brien Moules  
Acampo, CA

### Woolman Farms

Jim & Karen Woolman  
Brenham, TX

### Campeche Cattle

Scott Rice  
Houston, TX

### Collier Farms

Mike & Rhonda Collier  
Brenham, TX

### Golden Meadows Ranch

Chris & Mark Cooley  
Cotulla, TX

### J R V Cattle Company

Jason Vojacek  
Cove, TX

### Roadhouse Beefmasters

Gary & Sherrie Delz  
Georgetown, TX

### Triple B Beefmasters

Bill Botard  
Alice, TX

### Wayne Bryant Beefmasters

Wayne & Polly Bryant  
Lorena, TX

## ACCOMMODATIONS

Best Western

979/251-7791

Comfort Suites

979/421-8100

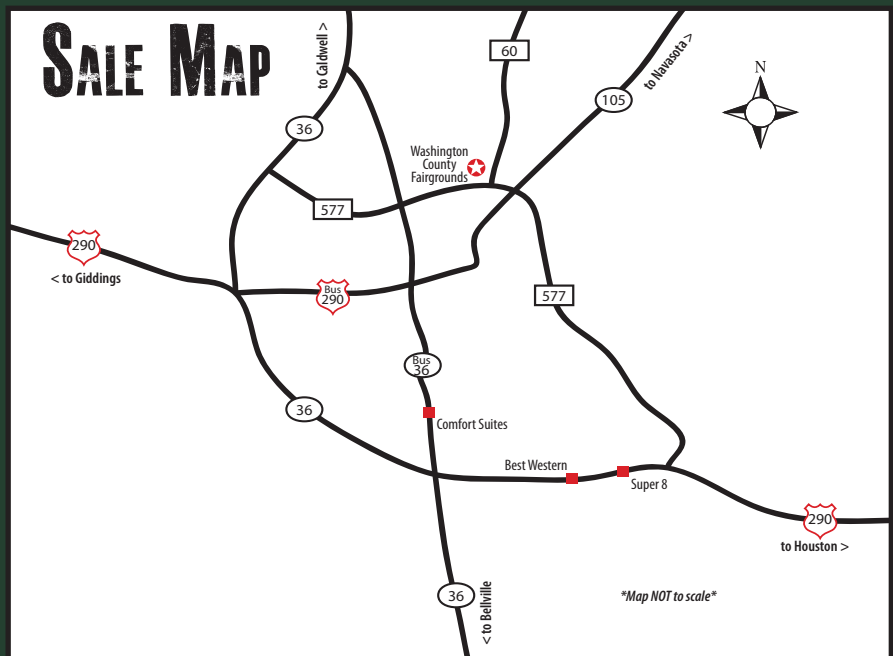
Holiday Inn Express

979/830-5331

SALE BROADCAST LIVE ON-LINE



[www.premierlivestockauctions.com](http://www.premierlivestockauctions.com)







# SCHEDULE

February 22<sup>nd</sup> - 23<sup>rd</sup>

Cattle available for viewing all day through sale day

February 24<sup>th</sup>

Complimentary Breakfast & Lunch

Cattle available for viewing in morning

*12:00 pm - Advantage **PLUS** Bull Sale*

For more information, contact:

## THE ADVANTAGE PLUS SALE TEAM

Trey Scherer 979/203-1656  
treyscherer@yahoo.com

Anthony Mihalski 210/415-0888  
aj1mihalski@aol.com

Bruce Robbins 210/861-5136  
robbinsscattle@att.net

Clay Howell 830/591-4497  
clayhowellswingingb@yahoo.com

## SALE DAY CONTACTS

Nolan Goebel - CF Herd Manager 361/275-1257

Mona Scherer - Sales Staff 979/203-4288

Raleigh Scherer - Sales Staff 979/203-7236

Noel Lopez - Int./Mexico Export  
956/639-3929 *Para Espanol*

Lance Bauer - BBU Director of Field Services  
210/464-1309

### CATALOG DESIGNED BY

Cattle Solutions

Kyle Devoll • 979/820-8362  
kyle@cattlesolutions.com  
www.cattlesolutions.com



### VIDEOS PRODUCED BY

Ideal Video Productions, LLC

Wade Fisher • 254/319-5349  
wade@idealvideoproductions.com  
www.idealvideoproductions.com





# WELCOME TO THE ADVANTAGE PLUS BEEFMASTER BULL SALE!



Dear Friends and Cattlemen,

Welcome to the second annual Advantage Plus Beefmaster Bull Sale, to be held Saturday, February 24th at the Washington County Fairgrounds in Brenham, TX. This year's offering will feature an even more explosive set of performance herd sires and high caliber genetics than ever before. From impressive growth and big carcass data to low birth weights and super maternal traits, this elite set of 100 performance tested bulls has it all.

Over a year ago, a select set of over 200 Beefmaster bull calves, from breed leading programs, were brought together for the Advantage Plus Performance Test. These bulls originating from Collier Farms and Swinging B Ranch genetics were combined and tested for weight per day of age growth (WDA), average daily gain (ADG), carcass qualities like REA and IMF, disposition, fleshing ease, and overall visual performance. After a year of stringent culling and a final formulated performance rank, only the top 100 bulls were allowed to sell. When combined with a full breeding soundness exam (BSE), health tests, and a 180-day guarantee, these bulls provide cattlemen with the tools and security to make their programs more profitable.

On February 24th, you will be given the unique opportunity to invest in these cutting-edge Advantage genetics and in the future of your program. Study the catalog, view the video, and feel free to reach out with questions concerning the offering and how to implement the qualities they offer into your herd. Advantage Plus herd sires will give you the MATERNAL ADVANTAGE, a whole calf crop at a time.

Trey Scherer, Beefmaster Advantage Program



We are committed to insuring the animal you bought is genetically accurate and the performance data has the utmost integrity. All bulls have been DNA tested for parent verification and the confirmation abbreviation is listed by their DNA number in the catalog. We went another step further by implementing the breed's new Genomically Enhanced EPDs (GE-EPDs). Every bull in the sale possesses GE-EPDs, which takes accuracy values to a whole new level. With the Advantage Plus, you get what you paid for, and more!



## WE ARE COMMITTED TO ACCURACY

### Dedicated to YOUR Confidence

We believe in providing our customers with the most accurate information possible. Combining DNA information with a bull's pedigree and individual production data significantly increases the reliability of his EPDs. To better serve our customers, all bulls in this sale have genomic-enhanced EPDs powered by GGP DNA testing.

The table below shows the estimated number of progeny the DNA information adds to the reliability of the EPDs. For nearly all traits, the accuracy of the bulls' genomic-enhanced EPDs is equivalent to the data from an entire calf crop.

	CED	BW	WW	YW	MILK	HP	MARB	REA
Est. Progeny	21	13	19	22	14	10	9	11

The genomic-enhanced EPDs in this sale catalog are made possible through a partnership with Neogen GeneSeek. We've made the investment in the world's most-advanced DNA testing for seedstock cattle. Our aim is to help you buy the right bulls for your goals with the highest-possible confidence in their quality and knowledge of their potential.



### DNA Abbreviations & Meanings

**PV = parent verified to both sire and dam**

**SV = verified to sire only at this time**

**DV = verified to dam only at this time**

**PO = profile only - parentage undetermined at this time**

**Pending = DNA is being reviewed for various reasons or has not been processed at catalog time.**

\*Note: SV, DV, PO, and Pending notations do not mean an animal can not or will not be parent verified but does mean that there is NO guarantee in the future that a sample can be obtained on a parent or can be verified to such.

### Benefits of GE-EPDs to cow/calf producers

#### Maternal GE-EPDs – Improve profits per cow:

- Verify calving-ease bulls, saving time, cost and stress when calving heifers.
- Identify bulls and cows with superior reproduction traits to improve cowherd fertility and maternal productivity.
- Better fertility improves conception rates, calving window and calf-crop uniformity.

#### Performance GE-EPDs – Optimize efficient returns:

- Produce cows that improve pounds weaned per exposed female.
- Produce cows for optimum growth for your grazing environment.
- Improve feed efficiency, producing heifers and cows that gain well on less feed and pass thrifty traits onto to their calves.

#### Quality GE-EPDs – More consistency of beef quality:

- Helps customers retaining calves, or selling into grids or value networks.
- Adds value and reputation quality in stockers or feeder calves.
- Predicts quality up front, saving years of valuable time, with less hassle than collecting carcass data.



# 1

## CF 997/2

REG#: C1177772 DNA: DNA 62521017850 PV  
BRAND: CF 997/2 DOB: 1/26/22

### COLLIER FARMS RED | HORNED



- \*\* TABASCO 3018K10
- \*\* RED TIGER 9075
- JUNGLE SPICE 786
- CF RIPTIDE 875/3
- \* CF RAQUEL 933/9
- \*\* LOGAN 62M27
- JUNGLE WHISPER 49/1
- WB SOLUTION 67/6
- CF DREAM CATCHER 914
- CF SOLUTIONS DESTINY 640/0
- \*\* LOGAN'S BENGAL BABY 134/0
- \* FUSION'S DESTINY 12
- \*\* FUSION 578/3
- SRALLA'S DESTINY 101/1

Combining the best and most proven genetics in the Collier Farms program produced this year's high grading bull. This exquisitely made bull topped the charts in all performance categories and then came in super strong visually to complete the offering. From power to class, and growth performance to top 1% \$M index, this Riptide x Solution semen sire has it all.

PERFORMANCE TEST & GRADING SCORES			
Beginning WDA Ratio	126.99	Visual Grading Ratio	111.34
Gain Test ADG Ratio	119.77	TOTAL Ratio Score	112.63
Ultrasound Scan Ratio	100.09		

INDIVIDUAL PERFORMANCE RECORDS								EXPECTED PROGENY DIFFERENCES								ULTRASOUND EPDs			INDEXES				
	BW	WW	YW	SCROTAL AS OF 1/25/24	REA	%IMF	RIB FAT	RUMP FAT		CE	BW	WW	YW	MILK	TM	MCE	SC	REA	%IMF	RIB FAT	\$T	\$M	
RATIO	112.6	93			100.3	108.8	125.9	120.9															
CONTEMP	14	14	14		8	6	4	3	EPD	3.84	0.5	45	51	10	32.6	2.5	0.69	0.1	-0.01	-0.02	87.9	41.19	
ADJ. TRAIT	74	646	1015	41	11.58	2.46	0.34	0.52	ACC	0.33	0.54	0.53	0.47	0.21	--	0.18	0.37	0	0	0	--	--	

# 2

## CF 770/2

REG#: C1174354 DNA: DNA 62521017659 PV  
BRAND: CF 770/2 DOB: 2/25/22

### COLLIER FARMS RED | HORNED



- CF RIPTIDE 875/3
- \*\* TABASCO 3018K10
- CF GULF STREAM 273/7
- \* CF RAQUEL 933/9
- \*\* THE PICTURE COW 463/3
- SEVEN-C ANDERSON 007
- \*\* LOGAN 62M27
- \*\* MARY KAY 765/7
- CF LOGAN'S LOVE 617/1
- QUASAR 991
- \*\* SEVEN-C ANDERSON 450
- JEZABELLE 62J8
- SIR CHARLES 0/01
- DUNKIN FARMS 150

As expected, Gulf Stream progeny are taking main stage in offerings across the industry. With his massive depth of body, growth, style and maternal traits, Gulf Stream will sweep you away. This powerful dark red, clean made power bull is out of the tremendous donor mother Logan's Love, dam of CF Galveston. Examine closely the high carcass data and big \$M index.

PERFORMANCE TEST & GRADING SCORES			
Beginning WDA Ratio	118.60	Visual Grading Ratio	110.61
Gain Test ADG Ratio	120.72	TOTAL Ratio Score	112.12
Ultrasound Scan Ratio	107.60		

INDIVIDUAL PERFORMANCE RECORDS								EXPECTED PROGENY DIFFERENCES								ULTRASOUND EPDs			INDEXES				
	BW	WW	YW	SCROTAL AS OF 1/25/24	REA	%IMF	RIB FAT	RUMP FAT		CE	BW	WW	YW	MILK	TM	MCE	SC	REA	%IMF	RIB FAT	\$T	\$M	
RATIO	109.8	89	90.5		100	100	100	100															
CONTEMP	18	18	16		1	1	1	1	EPD	3.96	0.3	29	42	8	22.5	2.34	0.35	0.24	-0.05	-0.028	73.12	21.51	
ADJ. TRAIT	72	547	1005	41	12.08	3.22	0.28	0.44	ACC	0.32	0.56	0.55	0.48	0.21	--	0.18	0.36	0	0	0	--	--	

# 3

## CF 860/2

REG#: C1174488 DNA: DNA 21121059183 PV  
BRAND: CF 860/2 DOB: 2/1/22

### COLLIER FARMS LIGHT RED | HORNED



- CF RIPTIDE 875/3
- \*\* TABASCO 3018K10
- CF GULF STREAM 273/7
- \* CF RAQUEL 933/9
- \*\* THE PICTURE COW 463/3
- SEVEN-C ANDERSON 007
- LOGAN XL 2019
- \*\* MARY KAY 765/7
- \* CF SIMPLY SUPERIOR 880/5
- \*\* LOGAN 62M27
- CJ SUPERIOR DREAM 1117
- BEEFOR 35/3
- CF DREAM CATCHER 914
- \* MISS SUPERIOR 8

Gulf Stream pushes the limits again in this massive made herd sire out of Simply Superior. The maternal cow families run deep here with Raquel, The Picture Cow, Miss Superior and Oasis. Here is the high performance, big EPD herd sire you've been looking for with the cow family consistency and Advantage program Segway your program demands.

PERFORMANCE TEST & GRADING SCORES			
Beginning WDA Ratio	122.94	Visual Grading Ratio	110.11
Gain Test ADG Ratio	123.54	TOTAL Ratio Score	111.62
Ultrasound Scan Ratio	98.87		

INDIVIDUAL PERFORMANCE RECORDS								EXPECTED PROGENY DIFFERENCES								ULTRASOUND EPDs			INDEXES				
	BW	WW	YW	SCROTAL AS OF 1/25/24	REA	%IMF	RIB FAT	RUMP FAT		CE	BW	WW	YW	MILK	TM	MCE	SC	REA	%IMF	RIB FAT	\$T	\$M	
RATIO	105.6	99	105.3		120.3	103.4	100	102.9															
CONTEMP	8	8	7		1	3	3	2	EPD	3.3	0.9	43	69	12	33.5	2.81	0.78	0.58	-0.05	-0.023	120	27.65	
ADJ. TRAIT	76	684	1080	42	12.76	1.82	0.21	0.35	ACC	0.32	0.54	0.54	0.47	0.18	--	0.18	0.34	0	0	0	--	--	



4

**SWB 06822**

REG#: C1158672 DNA: DNA NE02901444 PV  
BRAND: SWB 6822 DOB: 3/23/22

**BOUNDS SWINGING B RANCH**

RED | HORNE



SUMMIT 5306

J & K 1001  
M & M CATTLE 0714

**SWB TETON 06918**

SWB DOTSY 76-10

BULLET PROOF 864  
BLACK STACI 420  
\*\* CAVALIER 19/5  
EMS BODY BY SMOOTH 0-31

EMS SMOOTH CAVALIER 708

**EMS HEARTACHE 38**

EMMONS 4-1

EMS SMOOTH POWER BALL 0-0  
EMMONS RANCH 9-43

Teton sons are proving they can take your program to new heights through the combination of mass and style seen here. This brute of a bull has the bone structure, cocky front, big middle, muscle and growth you want to push both terminal and maternal traits to the limit. Outstanding BW to YW spread around with a Top 10% EPD in WW, YW, SC, IMF, \$T and \$M!

**PERFORMANCE TEST & GRADING SCORES**

Beginning WDA Ratio	127.03	Visual Grading Ratio	108.15
Gain Test ADG Ratio	117.89	TOTAL Ratio Score	111.43
Ultrasound Scan Ratio	112.35		

**INDIVIDUAL PERFORMANCE RECORDS**

	BW	WW	YW	SCROTAL AS OF 1/25/24	REA	%IMF	RIB FAT	RUMP FAT
RATIO	96.9	127			100.2	102.5	123.1	130.6
CONTEMP	30	18	1		7	7	4	3
ADJ. TRAIT	74	674	1143	46	12.42	3.69	0.32	0.64

**EXPECTED PROGENY DIFFERENCES**

**ULTRASOUND EPDs**

**INDEXES**

	CE	BW	WW	YW	MILK	TM	MCE	SC	REA	%IMF	RIB FAT	\$T	\$M
EPD	1.76	1.9	44	64	8	30.2	3.14	1.15	0.44	0.18	-0.02	113.87	28.29
ACC	0.32	0.56	0.54	0.54	0.17	--	0.18	0.32	0.54	0.59	0.52	--	--

5

**CGF 955/2**

REG#: P335660 DNA:  
BRAND: CG 955/2 DOB: 3/16/22

**CG FARMS**

RED | HORNE



CF DREAM CATCHER 914

\*\* L2 CAPTAIN SUGAR 12/02  
\*\* OASIS 655

**WB SOLUTION 67/6**

\*\* LOGAN'S BENGAL BABY 134/0

\*\* LOGAN 62M27  
\*\* BENGAL BABY 93/05  
DWIGHT RAMPLEY 404  
FRENZEL 4115

SCHNEIDER 0481

**CF 498/9**

\* LOGAN JOY 812/8

\*\* LOGAN 62M27  
TIGER JOY 02-96

Cow families run deep in this stunningly attractive herd sire. A quick glance at the style and presence of this bull is a definitive nod toward the maternal power you can see oozing from this promising young prospect. Dams like Oasis and Logan's Bengal Baby combine with an outstanding Painted Tiger donor on bottom. Strong milk, WW growth and \$M are certain.

**PERFORMANCE TEST & GRADING SCORES**

Beginning WDA Ratio	117.77	Visual Grading Ratio	111.34
Gain Test ADG Ratio	121.66	TOTAL Ratio Score	111.31
Ultrasound Scan Ratio	94.31		

**INDIVIDUAL PERFORMANCE RECORDS**

	BW	WW	YW	SCROTAL AS OF 1/25/24	REA	%IMF	RIB FAT	RUMP FAT
RATIO	96.1	101	100		100	100	100	100
CONTEMP	2	2	1		1	1	1	1
ADJ. TRAIT	90	513	961	46	10.77	2.05	0.24	0.36

**EXPECTED PROGENY DIFFERENCES**

**ULTRASOUND EPDs**

**INDEXES**

	CE	BW	WW	YW	MILK	TM	MCE	SC	REA	%IMF	RIB FAT	\$T	\$M
EPD	2.35	1.3	34	49	11	28.0	2.5	0.52	-0.08	0	-0.027	84.62	26.85
ACC	0	0	0	0	0	--	0	0	0	0	0	--	--

6

**CF 994/2**

REG#: C1174503 DNA: DNA 62521017858 PV  
BRAND: CF 994/2 DOB: 2/28/22

**COLLIER FARMS**

RED | SCURS



CF KINGSTON 730/4

\*\* LOGAN 62M27  
CIRCLE C 91/5

**7C MONARCH 14/19**

7C PROM QUEEN 562/15

COLLIER FARMS CF 431/3  
7C 214/2

CF RIPTIDE 875/3

\*\* TABASCO 3018K10  
\* CF RAQUEL 933/9

**CF BEBE 795/7**

SUGAR SHANA 645-6

\*\* BLACK JACK 21  
LITTLE V 7-98

Polled bull buyers will quickly find themselves studying hard here. This double bred polled bull is from the famous Bebe donor that won Res. Supreme at Houston in 2019 and by the 2020 Live Oak high selling bull. Study the extreme depth of side, huge rear 1/3 capacity, up-headed style and overall attractiveness. A huge IMF ratioing 137 strong REA and \$M are just a bonus.

**PERFORMANCE TEST & GRADING SCORES**

Beginning WDA Ratio	127.73	Visual Grading Ratio	109.62
Gain Test ADG Ratio	107.53	TOTAL Ratio Score	110.73
Ultrasound Scan Ratio	104.67		

**INDIVIDUAL PERFORMANCE RECORDS**

	BW	WW	YW	SCROTAL AS OF 1/25/24	REA	%IMF	RIB FAT	RUMP FAT
RATIO	98	98	93.6		99	137.6	111.1	93
CONTEMP	14	14	14		9	3	7	8
ADJ. TRAIT	85	680	1014	50	11.43	3.11	0.3	0.4

**EXPECTED PROGENY DIFFERENCES**

**ULTRASOUND EPDs**

**INDEXES**

	CE	BW	WW	YW	MILK	TM	MCE	SC	REA	%IMF	RIB FAT	\$T	\$M
EPD	4.81	0	26	33	7	20.4	3.33	0.36	-0.12	0.03	-0.033	58.63	23.36
ACC	0.32	0.53	0.52	0.43	0.12	--	0.17	0.31	0	0	0	--	--

7

**CF 983/2**

REG#: C1165347 DNA: DNA 62521017864 SV  
BRAND: CF 983/2 DOB: 1/23/22

**COLLIER FARMS  
LIGHT RED | HORNED**



NEW DIMENSION 805

V - SEVEN 501  
V - SEVEN 1673

CF TROUBADOR 879/3

\* CF RAQUEL 933/9

\*\* LOGAN 62M27  
JUNGLE WHISPER 49/1

FUSED SILK 998/7

\*\* FUSION 578/3  
\* SILK STOCKINGS 293H11

CF 437/6

\* COLLIER FARMS CF 242/4

COLLIER FARMS CF 341/0  
SIDONS 307/9

Here is a bull that won't be passed over. Immediately one will witness the massive heart girth, huge capacity, straight top line and flat out completeness offered by this Troubador son. On bottom, Fusion and Silk Stockings combine for maternal consistency and extra milk. Carcass performance and \$Indexes are high as well with a notable 148 ratio for IMF and Top 10% \$M!

PERFORMANCE TEST & GRADING SCORES			
Beginning WDA Ratio	125.66	Visual Grading Ratio	108.89
Gain Test ADG Ratio	114.12	TOTAL Ratio Score	110.73
Ultrasound Scan Ratio	105.30		

INDIVIDUAL PERFORMANCE RECORDS								EXPECTED PROGENY DIFFERENCES								ULTRASOUND EPDs			INDEXES				
	BW	WW	YW	SCROTAL AS OF 1/25/24	REA	%IMF	RIB FAT	RUMP FAT		CE	BW	WW	YW	MILK	TM	MCE	SC	REA	%IMF	RIB FAT	\$T	\$M	
RATIO	93.7	105			105.8	148	109.1	130.6		EPD	2.54	1.2	37	49	11	29.4	3.06	0.7	0.46	0.09	-0.031	87.59	30.64
CONTEMP	14	14	14		4	1	5	2		ACC	0.32	0.54	0.53	0.45	0.23	--	0.18	0.36	0	0	0	--	--
ADJ. TRAIT	85	691	1053	45	11.92	2.99	0.24	0.47															

8

**CF 724/2**

REG#: C1165186 DNA: DNA 62521017616 PV  
BRAND: CF 724/2 DOB: 2/7/22

**COLLIER FARMS  
RED | HORNED**



CF RIPTIDE 875/3

\*\* TABASCO 3018K10  
\* CF RAQUEL 933/9

CF GULF STREAM

\*\* THE PICTURE COW 463/3

SEVEN-C ANDERSON 007  
\*\* MARY KAY 765/7

\*\* INFINITY 120/96

\*\* RED SUGAR 104/93  
\*\* VANNA 5660

CF VIVID OASIS 713

\*\* OASIS 655

\*\* CAVALIER 19/5  
\*\* SEX LIFE 388

Gulf Stream is putting these monster power bulls in the top 10 time and again, and out of a variety of highly productive donors. This beast of a bull has the total critical mass to push your progeny to a new level of both growth and consistency of quality. His dam, Vivid Oasis is arguably one of the top 2 living donors at Collier Farms. Top 2% \$T index, and YW EPD's.

PERFORMANCE TEST & GRADING SCORES			
Beginning WDA Ratio	139.04	Visual Grading Ratio	104.71
Gain Test ADG Ratio	132.96	TOTAL Ratio Score	110.22
Ultrasound Scan Ratio	97.27		

INDIVIDUAL PERFORMANCE RECORDS								EXPECTED PROGENY DIFFERENCES								ULTRASOUND EPDs			INDEXES				
	BW	WW	YW	SCROTAL AS OF 1/25/24	REA	%IMF	RIB FAT	RUMP FAT		CE	BW	WW	YW	MILK	TM	MCE	SC	REA	%IMF	RIB FAT	\$T	\$M	
RATIO	98.6	111	120.9		109.7	91.5	140.9	74.3		EPD	3.33	0.9	46	84	9	31.6	2.79	0.62	0.16	-0.07	-0.013	144.39	18.41
CONTEMP	13	13	12		1	6	1	8		ACC	0.32	0.56	0.55	0.49	0.21	--	0.18	0.37	0	0	0	--	--
ADJ. TRAIT	80	626	1229	45	11.99	1.93	0.31	0.26															

9

**CR RAN 225**

REG#: C1173908 DNA:  
BRAND: C-C 225 DOB: 2/22/22

**COLLIER FARMS  
RED | HORNED**



MCALESTER 4521

J & K 1001  
KENT MINDEMANN 95

WITTENBURG HW 8220

SWB SALLY -JO 13216

VFF TORQ'D 8/2  
RIVER QUEEN 16/5

COLLIER FARMS 906/7

\*\* LOGAN 62M27  
\*\* PENELOPE 293J11

CF MONET'S VISION 877/5

N-U MONETTE N-U814

DELIVERANCE 44  
MONA'S SPIRIT 601-5

If you are looking to add fleshing ease, great looks, strong cow families and a gentle disposition to your herd, this is the man. The sire of this great herd bull was a top 10 grading bull at Live Oak several years back and produces the added mass and sogginess seen here. He delivers calving ease and a long line of great brood cows on bottom for total balance and value.

PERFORMANCE TEST & GRADING SCORES			
Beginning WDA Ratio	120.02	Visual Grading Ratio	108.15
Gain Test ADG Ratio	119.77	TOTAL Ratio Score	109.69
Ultrasound Scan Ratio	100.04		

INDIVIDUAL PERFORMANCE RECORDS								EXPECTED PROGENY DIFFERENCES								ULTRASOUND EPDs			INDEXES				
	BW	WW	YW	SCROTAL AS OF 1/25/24	REA	%IMF	RIB FAT	RUMP FAT		CE	BW	WW	YW	MILK	TM	MCE	SC	REA	%IMF	RIB FAT	\$T	\$M	
RATIO	100	100	100		100	100	100	100		EPD	4.19	0.2	22	42	8	18.8	3.34	0.43	0.56	-0.12	-0.034	71.66	11.91
CONTEMP	1	1	1		1	1	1	1		ACC	0	0	0	0	--	0	0	0	0	0	0	--	--
ADJ. TRAIT	72	574	1105	45	11.81	2.05	0.17	-0.05															



10

**H BAR 2051**

REG#: C1164959 DNA: DNA 62521017940 PV  
BRAND: H-2051 DOB: 2/12/22

**H-BAR BEEFMASTERS**

RED | POLLED



\*\* LOGAN 62M27 QUASAR 991  
JEZABELLE 62J8  
**CF KINGSTON 730/4**  
CIRCLE C 91/5  
FUSED SILK 998/7  
**COLLIER FARMS CF 597/3**  
SWB SIMPLY RED 69/11

When Kingston comes to town, bulls and breeders take notice. Just like his LOBBA Champion and high selling brothers, this Top 10 bull quickly impresses with that extra mass and square cut we are all attracted to. Study the guts and volume here with the bone structure, front end and sogginess needed to produce amazing females. To top it all off, he is slick POLLED!

PERFORMANCE TEST & GRADING SCORES			
Beginning WDA Ratio	105.70	Visual Grading Ratio	109.13
Gain Test ADG Ratio	125.42	<b>TOTAL Ratio Score 109.40</b>	
Ultrasound Scan Ratio	98.94		

INDIVIDUAL PERFORMANCE RECORDS								
	BW	WW	YW	SCROTAL AS OF 1/25/24	REA	%IMF	RIB FAT	RUMP FAT
RATIO	101.3	95	94.6		92.4	113	122.2	109.1
CONTEMP	2	2	2		2	1	1	1
ADJ. TRAIT	78	601	787	40	8.93	3.4	0.22	0.24

EXPECTED PROGENY DIFFERENCES										ULTRASOUND EPDs			INDEXES	
	CE	BW	WW	YW	MILK	TM	MCE	SC	REA	%IMF	RIB FAT	\$T	\$M	
EPD	2.58	1.4	30	48	11	26.3	2.97	0.32	0.12	-0.04	-0.036	82.82	21.03	
ACC	0.15	0.44	0.42	0.32	0.14	--	0.03	0.15	0	0	0	--	--	

11

**CB ROC POKEMON**

REG#: C1161673 DNA:  
BRAND: CBR 2/22 DOB: 2/6/22

**CB ROCKEFELLER RANCH**

RED | DE-HORNED



CF DREAM CATCHER 914  
**CF BOLD SALUTATIONS 877/8**  
\* CF RAQUEL 933/9  
EL PATRON 686/3  
**ROAD HOUSE 70**  
SUGAR CATCHER 1217

High grading and high selling performance sires originate from the same predictable and powerful genetics. This dark red, massive made bull with great looks and test performance is sired by Bold Salutations, the lot 1 high grading bull in the 2020 Collier Farms Bull Sale. With an outstanding El Patron dam on the bottom, huge REA scan and big WW, this is the one to buy!

PERFORMANCE TEST & GRADING SCORES			
Beginning WDA Ratio	118.19	Visual Grading Ratio	106.67
Gain Test ADG Ratio	123.54	<b>TOTAL Ratio Score 109.38</b>	
Ultrasound Scan Ratio	105.32		

INDIVIDUAL PERFORMANCE RECORDS								
	BW	WW	YW	SCROTAL AS OF 1/25/24	REA	%IMF	RIB FAT	RUMP FAT
RATIO	95.3	99	100		108.9	99.6	71.4	88.6
CONTEMP	2	2	1		1	2	2	2
ADJ. TRAIT	85	724	989	47	13.34	2.41	0.15	0.31

EXPECTED PROGENY DIFFERENCES										ULTRASOUND EPDs			INDEXES	
	CE	BW	WW	YW	MILK	TM	MCE	SC	REA	%IMF	RIB FAT	\$T	\$M	
EPD	1.88	1.6	18	34	5	14.0	2.51	0.12	0.12	-0.16	-0.053	59.07	5.65	
ACC	0.14	0.39	0.37	0.31	0.15	--	0.04	0.2	0	0	0	--	--	

12

**CF 774/2**

REG#: C1174357 DNA: DNA 62521017655 PV  
BRAND: CF 774/2 DOB: 2/21/22

**COLLIER FARMS**

RED | SCURS



\* EMS RING OF FIRE 130 BONFIRE 8038  
EMS COLOR ME SUGAR 811  
**CJ'S SURE FIRE 39/16**  
MISS CJ 1014  
CJ MONEYMAKER 707  
MISS CJ 737  
\*\* INFINITY 120/96 \*\* RED SUGAR 104/93  
\*\* VANNA 5660  
**CF VIVID OASIS 713**  
\*\* OASIS 655 \*\* CAVALIER 19/5  
\*\* SEX LIFE 388

Polled with performance and predictability is always an easy choice. CJ's Sure Fire quickly became a go-to polled sire that delivered both looks and carcass performance as seen here. From a great rib shape and muscle pattern to a big REA and strong IMF, this big index polled bull is extremely balanced. \$T in the Top 25% and \$M in the Top 30%!

PERFORMANCE TEST & GRADING SCORES			
Beginning WDA Ratio	122.62	Visual Grading Ratio	107.16
Gain Test ADG Ratio	121.66	<b>TOTAL Ratio Score 109.32</b>	
Ultrasound Scan Ratio	98.75		

INDIVIDUAL PERFORMANCE RECORDS								
	BW	WW	YW	SCROTAL AS OF 1/25/24	REA	%IMF	RIB FAT	RUMP FAT
RATIO	96.4	86	97.6		98.5	86.6	100	70.7
CONTEMP	18	18	16		8	10	6	13
ADJ. TRAIT	82	528	1084	48	12.43	1.94	0.26	0.29

EXPECTED PROGENY DIFFERENCES										ULTRASOUND EPDs			INDEXES	
	CE	BW	WW	YW	MILK	TM	MCE	SC	REA	%IMF	RIB FAT	\$T	\$M	
EPD	3.52	0.2	35	57	8	25.3	2.04	0.45	-0.07	0.03	-0.022	98.52	20.52	
ACC	0.32	0.56	0.55	0.49	0.22	--	0.18	0.4	0	0	0	--	--	

13

**V7 202/22**

REG#: C1163601 DNA: DNA 9518022899 SV  
BRAND: V7 202/22 DOB: 2/14/22

**V - SEVEN  
RED | POLLED**



COLLIER FARMS 3760  
**SEVEN-C ANDERSON 19/19**  
SEVEN-C ANDERSON 119/1

SLICK 16  
COLLIER FARMS 711/1  
  
COLLIER FARMS 774/7  
SEVEN-C ANDERSON 1074  
\*\* VISION 905  
COLLIER FARMS 611/4

- Flashy fronted, long hipped bull with square design and great looks
- POLLED bull from a long line of V-Seven and Collier cow families
- Huge REA and IMF measures at the top of the test with big WW and YW growth

COLLIER FARMS CF 648/1

**V7 2004/5**

V - SEVEN 1885/2

COLLIER FARMS 771/7  
V - SEVEN 1784

PERFORMANCE TEST & GRADING SCORES			
Beginning WDA Ratio	132.56	Visual Grading Ratio	105.44
Gain Test ADG Ratio	106.59	TOTAL Ratio Score	109.17
Ultrasound Scan Ratio	114.40		

INDIVIDUAL PERFORMANCE RECORDS								EXPECTED PROGENY DIFFERENCES								ULTRASOUND EPDs			INDEXES				
	BW	WW	YW	SCROTAL AS OF 1/25/24	REA	%IMF	RIB FAT	RUMP FAT		CE	BW	WW	YW	MILK	TM	MCE	SC	REA	%IMF	RIB FAT	\$T	\$M	
RATIO	99.6	100	100		100	100	100	100	EPD	2.89	1.2	25	35	7	20.0	3.17	0.21	-0.07	-0.02	-0.027	61.3	18.49	
CONTEMP	14	1	1		1	1	1	1	ACC	0.32	0.53	0.5	0.44	0.2	--	0.18	0.35	0	0	0	--	--	
ADJ. TRAIT	76	658	1016	48	12.72	3.83	0.21	0.32															

14

**WB SOLUTION'S HOT SHOT**

REG#: C1159463 DNA: DNA 62521017698 PV  
BRAND: WB 131/2 DOB: 1/22/22

**COLLIER FARMS  
DARK RED | HORNED**



CF DREAM CATCHER 914

\*\* L2 CAPTAIN SUGAR 12/02  
\*\* OASIS 655

**WB SOLUTION 67/6**

\*\* LOGAN'S BENGAL BABY 134/0

\*\* LOGAN 62M27  
\*\* BENGAL BABY 93/05  
\*\* RED SUGAR 104/93

\*\* INFINITY 120/96

**SG SINGAPORE SLING 40/4**

PAINTED OASIS 680

\*\* PAINTED TIGER 3-390  
\*\* OASIS 655

- Solution and Singapore Sling teamed up to produce high selling heifers and bulls
- Great balance and style with the red color, bone, and muscle we love from Solution
- Strong growth and balanced EPD profile, back up the legendary cow families

PERFORMANCE TEST & GRADING SCORES			
Beginning WDA Ratio	121.44	Visual Grading Ratio	106.92
Gain Test ADG Ratio	128.25	TOTAL Ratio Score	109.10
Ultrasound Scan Ratio	92.84		

INDIVIDUAL PERFORMANCE RECORDS								EXPECTED PROGENY DIFFERENCES								ULTRASOUND EPDs			INDEXES				
	BW	WW	YW	SCROTAL AS OF 1/25/24	REA	%IMF	RIB FAT	RUMP FAT		CE	BW	WW	YW	MILK	TM	MCE	SC	REA	%IMF	RIB FAT	\$T	\$M	
RATIO	93.3	100			100	100	100	100	EPD	0.48	2.4	25	44	10	22.1	2.53	0.26	-0.41	-0.08	-0.026	74.97	13.25	
CONTEMP	2	2	1		1	1	1	1	ACC	0.34	0.52	0.51	0.47	0.21	--	0.18	0.35	0	0	0	--	--	
ADJ. TRAIT	75	776	1023	49	10.97	1.78	0.22	0.28															

15

**V7 217/22**

REG#: C1163686 DNA: DNA 9518022817 SV  
BRAND: V7 217/22 DOB: 3/15/22

**V - SEVEN  
RED | POLLED**



CF COWBOY COOL 872/3

NEW DIMENSION 805  
ENDLESS OASIS 179

**COLLIER FARMS CF 644/8**

PRINCESS JACKIE 1325

KING PIN BF950  
JACKLIN 94/10  
NEW DIMENSION 805  
HS HEAVENLY HATTIE 62T14

RED BULL 511

**V7 1983/5**

V - SEVEN 1526

WESTERN MAGIC 102-98  
V - SEVEN 1298

- Great looks and clean lines run deep in this long made, thick ended power bull
- His sire, Cool Cowboy, has produced countless high scoring bulls and females
- Balanced performance with good carcass ratios, strong growth EPD's and \$ Indexes

PERFORMANCE TEST & GRADING SCORES			
Beginning WDA Ratio	110.32	Visual Grading Ratio	107.90
Gain Test ADG Ratio	123.54	TOTAL Ratio Score	108.89
Ultrasound Scan Ratio	99.72		

INDIVIDUAL PERFORMANCE RECORDS								EXPECTED PROGENY DIFFERENCES								ULTRASOUND EPDs			INDEXES				
	BW	WW	YW	SCROTAL AS OF 1/25/24	REA	%IMF	RIB FAT	RUMP FAT		CE	BW	WW	YW	MILK	TM	MCE	SC	REA	%IMF	RIB FAT	\$T	\$M	
RATIO	100.9	98	101.5		100.3	131.9	100	125.8	EPD	3.07	1.1	31	47	8	23.0	2.86	0.13	0.1	-0.06	-0.039	81.02	18.96	
CONTEMP	14	3	2		1	1	1	1	ACC	0.31	0.5	0.47	0.39	0.15	--	0.17	0.32	0	0	0	--	--	
ADJ. TRAIT	75	576	868	34	11.61	2.4	0.18	0.39															



16

**SWB 06022**

REG#: C1158675 DNA: DNA NE02901560 PV  
BRAND: SWB 6022 DOB: 3/19/22

**BOUNDS SWINGING B RANCH**

RED | HORNE



J & K 1001  
**MCALESTER 4521**

KENT MINDEMANN 95

\*\* FUSION 578/3

**CF LOVE SONG 421/7**

PRINCESS JACKIE 1325

SIMON CREEK 5/34  
SIMON CREEK 317

LASATER BEEFMASTER 3265  
KENT MINDEMANN 546

\*\* TABASCO 3018K10

\*\* PHANTOM'S DIAMOND 119/9

KING PIN BF950  
JACKLIN 94/10

- Extraordinary frame size, middle capacity, and muscle mass run deep
- Flush-mate sisters were high sellers in the 2023 Genetic Investment Sales
- Outstanding growth EPD's in the Top 15%, big carcass scan, and \$T & \$M Top 15%

**PERFORMANCE TEST & GRADING SCORES**

Beginning WDA Ratio	116.49	Visual Grading Ratio	106.18
Gain Test ADG Ratio	120.84	<b>TOTAL Ratio Score 108.80</b>	
Ultrasound Scan Ratio	107.42		

**INDIVIDUAL PERFORMANCE RECORDS**

	BW	WW	YW	SCROTAL AS OF 1/25/24	REA	%IMF	RIB FAT	RUMP FAT
RATIO	103.9	96			98.2	87.8	69.2	124.5
CONTEMP	30	18	1		8	11	12	4
ADJ. TRAIT	69	510	1044	48.5	12.17	3.16	0.18	0.61

**EXPECTED PROGENY DIFFERENCES**

**ULTRASOUND EPDs**

**INDEXES**

	CE	BW	WW	YW	MILK	TM	MCE	SC	REA	%IMF	RIB FAT	\$T	\$M
EPD	3.66	0.4	39	62	9	28.5	3.92	1.05	0.53	-0.04	-0.036	107.69	25.72
ACC	0.33	0.55	0.55	0.55	0.26	--	0.18	0.41	0.54	0.6	0.53	--	--

17

**SWB 15922**

REG#: C1165492 DNA: DNA NE02969164 PV  
BRAND: SWB 15922 DOB: 4/23/22

**BOUNDS SWINGING B RANCH**

RED | POLLED



CJ'S GAME CHANGER 1316

**CJ'S REVOLUTION 1772**

CJ'S HOPE DIAMOND 5/13

\*\* CF SUGAR BRITCHES 040

**CHRK PRINCESS 374D**

CHANNAROCK CHRK 1620U

CJ'S JUSTICE J100  
BRINDLE BABY OF SOUL 7222

CF DREAM CATCHER 914  
\* CJ'S DIAMOND OF SOUL 509

\*\* L2 CAPTAIN SUGAR 12/02

\*\* OASIS 655

\* DOC 2D-0C81  
CHANNAROCK FARM 1054/3

- Great looks, awesome soundness, cocky extended front, massive muscle and bold
- POLLED bull with from highly promoted & syndicated performance sire CJ Revolution
- Famous cow families with impressive EPDs; Top 3% \$T, WW, YW Top 15% REA & IMF

**PERFORMANCE TEST & GRADING SCORES**

Beginning WDA Ratio	116.22	Visual Grading Ratio	107.90
Gain Test ADG Ratio	107.79	<b>TOTAL Ratio Score 108.23</b>	
Ultrasound Scan Ratio	102.97		

**INDIVIDUAL PERFORMANCE RECORDS**

	BW	WW	YW	SCROTAL AS OF 1/25/24	REA	%IMF	RIB FAT	RUMP FAT
RATIO	91.6	96	97		90.8	98.2	95	70.6
CONTEMP	5	3	2		2	2	2	2
ADJ. TRAIT	79	456	873	46	9.41	3.72	0.19	0.24

**EXPECTED PROGENY DIFFERENCES**

**ULTRASOUND EPDs**

**INDEXES**

	CE	BW	WW	YW	MILK	TM	MCE	SC	REA	%IMF	RIB FAT	\$T	\$M
EPD	1.07	1.8	48	78	10	33.4	1.63	1.1	0.56	0.16	-0.038	137.23	26.26
ACC	0.32	0.55	0.51	0.5	0.17	--	0.18	0.39	0.48	0.53	0.46	--	--

18

**JRV 34/22**

REG#: C1161513 DNA: DNA 21121059385 PV  
BRAND: JRV 34/22 DOB: 3/23/22

**J R V CATTLE COMPANY**

RED | DE-HORNED



CF RIPTIDE 875/3

**CF ALEJANDRO 690/8**

CF OLIVIA 292/4

COLLIER FARMS 807/9

**COLLIER FARMS CF 164/7**

WALKER 029

\*\* TABASCO 3018K10  
\* CF RAQUEL 933/9

\*\* LOGAN 62M27  
OLIVER RANCH 304

\*\* LOGAN 62M27

\*\* PENELOPE 293J11

BLAU RANCH 592  
\*\* WALKER 2/65

- A big boned, strong made bull with great profile, substance, volume and quality
- Riptide genetics back over Logan/Penelope hit every time for consistency
- Strong maternal traits with \$M in top 35%, good growth and REA measures

**PERFORMANCE TEST & GRADING SCORES**

Beginning WDA Ratio	117.03	Visual Grading Ratio	106.43
Gain Test ADG Ratio	127.31	<b>TOTAL Ratio Score 108.14</b>	
Ultrasound Scan Ratio	92.11		

**INDIVIDUAL PERFORMANCE RECORDS**

	BW	WW	YW	SCROTAL AS OF 1/25/24	REA	%IMF	RIB FAT	RUMP FAT
RATIO	90.5	103	100		100	100	100	100
CONTEMP	2	2	1		1	1	1	1
ADJ. TRAIT	79	623	949	45	11.91	1.3	0.27	0.25

**EXPECTED PROGENY DIFFERENCES**

**ULTRASOUND EPDs**

**INDEXES**

	CE	BW	WW	YW	MILK	TM	MCE	SC	REA	%IMF	RIB FAT	\$T	\$M
EPD	1.8	1.5	29	41	7	20.9	2.57	0.44	0.14	-0.01	-0.024	71.34	19.19
ACC	0.31	0.45	0.44	0.4	0.16	--	0.18	0.32	0	0	0	--	--

19

**DK 5 B 20/22**

REG#: C1167502 DNA: DNA 21121059595  
BRAND: DK5 20/22 DOB: 2/18/22

**DK 5 BAR RANCH**

RED | HORNE



\*\* LOGAN 62M27

COLLIER FARMS CF 320/5

TIGER DOLL 7004

\*\* CF SUGAR BRITCHES 040

COLLIER FARMS CF 802/6

COLLIER FARMS CF 112/0

QUASAR 991  
JEZABELLE 62J8

\*\* PAINTED TIGER 3-390  
\*\* MISS LEIGH ANN 625  
\*\* L2 CAPTAIN SUGAR 12/02  
\*\* OASIS 655

\*\* LOGAN 62M27  
\*\* SEVEN-C ANDERSON 450

- Logan on Painted Tiger genetics was the foundation for the Collier program
- Moderate frame size with big muscles and great conformational design
- Super calving ease, big WW growth and YW ratio with \$M in the Top 30%

PERFORMANCE TEST & GRADING SCORES

Beginning WDA Ratio	110.56	Visual Grading Ratio	107.16
Gain Test ADG Ratio	126.37	TOTAL Ratio Score	107.80
Ultrasound Scan Ratio	90.90		

INDIVIDUAL PERFORMANCE RECORDS

	BW	WW	YW	SCROTAL AS OF 1/25/24	REA	%IMF	RIB FAT	RUMP FAT
RATIO	104.3	105	103.2		92.1	101.5	106.3	44.8
CONTEMP	4	4	3		3	2	2	3
ADJ. TRAIT	76	654	945	44	9.85	1.99	0.17	0.13

EXPECTED PROGENY DIFFERENCES

ULTRASOUND EPDs

INDEXES

	CE	BW	WW	YW	MILK	TM	MCE	SC	REA	%IMF	RIB FAT	\$T	\$M
EPD	5.29	-0.4	19	27	10	19.3	2.74	0.46	-0.24	-0.05	-0.033	46.13	21.14
ACC	0.32	0.49	0.48	0.42	0.16	--	0.18	0.34	0	0	0	--	--

20

**V7 219/22**

REG#: C1163688 DNA: DNA 9518022819  
BRAND: V7 219/22 DOB: 3/25/22

**V - SEVEN**

RED | POLLED



\*\* VISION 905

COLLIER FARMS CF 593/6

MAIDEN SUGAR 52/02

RED BULL 511

V - SEVEN 2016/15

V - SEVEN 1798

\*\* LOGAN 62M27  
\*\* PENELOPE 293J11

\*\* SYNERGY 84/95  
L TWO RANCH 88/93  
NEW DIMENSION 805  
HS HEAVENLY HATTIE 62T14

TIO 4/162  
SEVEN-C ANDERSON 1021

- Extremely thick made POLLED/SCURED bull with capacity and sogginess
- Vision genetics on Red Bull 511 produced calving ease and conformational style
- Strong REA scan for REA with Top 15% Calving Ease and Top 25% BW EPD's

PERFORMANCE TEST & GRADING SCORES

Beginning WDA Ratio	115.24	Visual Grading Ratio	104.46
Gain Test ADG Ratio	136.72	TOTAL Ratio Score	107.36
Ultrasound Scan Ratio	90.39		

INDIVIDUAL PERFORMANCE RECORDS

	BW	WW	YW	SCROTAL AS OF 1/25/24	REA	%IMF	RIB FAT	RUMP FAT
RATIO	111.3	105	98.5		99.6	68.1	94.4	74.2
CONTEMP	14	3	2		2	2	2	2
ADJ. TRAIT	68	617	843	48	11.52	1.24	0.17	0.23

EXPECTED PROGENY DIFFERENCES

ULTRASOUND EPDs

INDEXES

	CE	BW	WW	YW	MILK	TM	MCE	SC	REA	%IMF	RIB FAT	\$T	\$M
EPD	5.47	-0.4	23	41	9	20.4	2.8	0.03	-0.01	-0.3	-0.044	67.59	14.92
ACC	0.31	0.5	0.47	0.4	0.16	--	0.17	0.32	0	0	0	--	--

21

**DK 5 B 14/22**

REG#: C1167504 DNA:  
BRAND: DK5 14/22 DOB: 1/17/22

**DK 5 BAR RANCH**

RED | HORNE



EL PATRON 686/3

COLLIER FARMS CF 964/7

FOREVER SASSY 292/2

\*\* LOGAN 62M27

TR MISS MIRACLE 203/15

BABY GIRL II 90

\*\* LOGAN 62M27  
HARMONY 62K11

LOGAN XL 2019  
\* CF SASSY 8993  
QUASAR 991  
JEZABELLE 62J8

\*\* SPARTACUS 86/653  
BABY GIRL 804

- Extreme style and conformational class needed to produce front pasture females
- Calving Ease, strong WW growth and solid REA scan for added performance
- Maternal legends like Harmony, Jezabelle, Sassy and Baby girl, Top 20% \$M

PERFORMANCE TEST & GRADING SCORES

Beginning WDA Ratio	106.81	Visual Grading Ratio	108.15
Gain Test ADG Ratio	116.95	TOTAL Ratio Score	107.30
Ultrasound Scan Ratio	92.20		

INDIVIDUAL PERFORMANCE RECORDS

	BW	WW	YW	SCROTAL AS OF 1/25/24	REA	%IMF	RIB FAT	RUMP FAT
RATIO	101.6	100			98.7	95.4	50	113.8
CONTEMP	4	4	3		2	3	3	2
ADJ. TRAIT	78	623	856	47	10.55	1.87	0.08	0.33

EXPECTED PROGENY DIFFERENCES

ULTRASOUND EPDs

INDEXES

	CE	BW	WW	YW	MILK	TM	MCE	SC	REA	%IMF	RIB FAT	\$T	\$M
EPD	4.12	0.4	22	23	6	16.9	2.79	0.64	-0.27	-0.05	-0.049	40.8	23.24
ACC	0.15	0.42	0.41	0.33	0.14	--	0.04	0.23	0	0	0	--	--



22

**TND 2204**

REG#: C1160731 DNA: DNA 62521018837 SV  
BRAND: TND 2204 DOB: 1/25/22

**TND BEEFMASTERS**

RED | HORNED



CF DREAM CATCHER 914

\*\* L2 CAPTAIN SUGAR 12/02  
\*\* OASIS 655

- Classic Solution looks are evident in this big boned, long topped herd bull
- Vision and Captain Sugar on bottom bring in awesome cow families to the mix
- Low BW, strong WW and carcass with a Top 15% \$M index to back him up

**WB SOLUTION 67/6**

\*\* LOGAN'S BENGAL BABY 134/0

\*\* LOGAN 62M27  
\*\* BENGAL BABY 93/05  
\*\* LOGAN 62M27  
\*\* PENELOPE 293J11

\*\* VISION 905

**COLLIER FARMS CF 169/5**

PHIOLA 68/09

\*\* L2 CAPTAIN SUGAR 12/02  
COTTAGE FARM 224

**PERFORMANCE TEST & GRADING SCORES**

Beginning WDA Ratio	122.73	Visual Grading Ratio	106.67
Gain Test ADG Ratio	106.59	TOTAL Ratio Score	107.16
Ultrasound Scan Ratio	95.60		

**INDIVIDUAL PERFORMANCE RECORDS**

	BW	WW	YW	SCROTAL AS OF 1/25/24	REA	%IMF	RIB FAT	RUMP FAT
RATIO	98.2	97			93.7	97.6	72.7	77.4
CONTEMP	4	2	2		2	2	2	2
ADJ. TRAIT	55	613	925	48	9.37	2.79	0.16	0.24

**EXPECTED PROGENY DIFFERENCES**

**ULTRASOUND EPDs**

**INDEXES**

	CE	BW	WW	YW	MILK	TM	MCE	SC	REA	%IMF	RIB FAT	\$T	\$M
EPD	2.28	1.6	31	36	6	22.1	2.89	0.4	-0.47	-0.1	-0.044	62.46	25.68
ACC	0.34	0.52	0.49	0.45	0.2	--	0.18	0.34	0	0	0	--	--

23

**CF 966/2**

REG#: C1177777 DNA: DNA 62521017882 PV  
BRAND: CF 966/2 DOB: 3/1/22

**COLLIER FARMS**

RED | POLLED



CF KINGSTON 730/4

\*\* LOGAN 62M27  
CIRCLE C 91/5

- POLLED bull buyers study hard on this impressive designed bull
- Extreme depth and chest floor with tons of flank and conformation
- Monarch and Bebe also produced the #6 grading bull as well; Strong \$M

**7C MONARCH 14/19**

7C PROM QUEEN 562/15

COLLIER FARMS CF 431/3  
7C 214/2

CF RIPTIDE 875/3

\*\* TABASCO 3018K10  
\* CF RAQUEL 933/9

**CF BEBE 795/7**

SUGAR SHANA 645-6

\*\* BLACK JACK 21  
LITTLE V 7-98

**PERFORMANCE TEST & GRADING SCORES**

Beginning WDA Ratio	128.77	Visual Grading Ratio	102.74
Gain Test ADG Ratio	124.48	TOTAL Ratio Score	107.14
Ultrasound Scan Ratio	98.93		

**INDIVIDUAL PERFORMANCE RECORDS**

	BW	WW	YW	SCROTAL AS OF 1/25/24	REA	%IMF	RIB FAT	RUMP FAT
RATIO	100	100	100		100	100	100	100
CONTEMP	1	1	1		1	1	1	1
ADJ. TRAIT	86	613	1097	48	11.56	2.32	0.24	0.38

**EXPECTED PROGENY DIFFERENCES**

**ULTRASOUND EPDs**

**INDEXES**

	CE	BW	WW	YW	MILK	TM	MCE	SC	REA	%IMF	RIB FAT	\$T	\$M
EPD	4.42	0.2	29	39	8	22.1	3.13	0.34	-0.13	-0.13	-0.037	66.51	23.22
ACC	0.1	0.37	0.38	0.34	0.1	--	0.02	0.18	0	0	0	--	--

24

**WB SOLUTION'S SLING SHOT**

REG#: C1159457 DNA: DNA 62521017693 PV  
BRAND: WB 132/2 DOB: 1/29/22

**COLLIER FARMS**

DARK RED | HORNED



**SIRE OF LOT 24**

CF DREAM CATCHER 914

\*\* L2 CAPTAIN SUGAR 12/02  
\*\* OASIS 655

- Solution continues to turn out some of the best looking and high value progeny
- Cow families galore top and bottom with Logan's Bengal Baby and Painted Oasis
- Top 15% Milk and \$M, Top 30% WW coupled with big actual WW and scan

**WB SOLUTION 67/6**

\*\* LOGAN'S BENGAL BABY 134/0

\*\* LOGAN 62M27  
\*\* BENGAL BABY 93/05  
\*\* RED SUGAR 104/93  
\*\* VANNA 5660

\*\* INFINITY 120/96

**SG SINGAPORE SLING 40/4**

PAINTED OASIS 680

\*\* PAINTED TIGER 3-390  
\*\* OASIS 655

**PERFORMANCE TEST & GRADING SCORES**

Beginning WDA Ratio	127.59	Visual Grading Ratio	104.95
Gain Test ADG Ratio	116.01	TOTAL Ratio Score	107.11
Ultrasound Scan Ratio	92.87		

**INDIVIDUAL PERFORMANCE RECORDS**

	BW	WW	YW	SCROTAL AS OF 1/25/24	REA	%IMF	RIB FAT	RUMP FAT
RATIO	107.7	100						
CONTEMP	2	2	1		1	1	1	1
ADJ. TRAIT	65	773		42	11.07	1.26	0.06	-0.68

**EXPECTED PROGENY DIFFERENCES**

**ULTRASOUND EPDs**

**INDEXES**

	CE	BW	WW	YW	MILK	TM	MCE	SC	REA	%IMF	RIB FAT	\$T	\$M
EPD	2.41	1.4	31	43	11	26.0	2.25	0.53	-0.42	-0.1	-0.022	73.55	25.04
ACC	0.34	0.52	0.51	0.47	0.21	--	0.18	0.35	0.44	0.46	0.42	--	--

25

**CF 982/2**

REG#: C1165346 DNA: DNA 62521017865 PV  
BRAND: CF 982/2 DOB: 3/11/22

**COLLIER FARMS  
RED | HORNED**



\*\* CF SUGAR BRITCHES 040

**CF DIAMOND BRITCHES 412/7**

DIAMOND MAIDEN 1931/4

NEW DIMENSION 805

**COLLIER FARMS CF 435/7**

CF PERFECT JOY 495/0

\*\* L2 CAPTAIN SUGAR 12/02

\*\* OASIS 655

\*\* CAVALIER 19/5

L2 MAIDEN LADY 154/00

V - SEVEN 501

V - SEVEN 1673

\*\* LOGAN 62M27

TIGER JOY 02-96

- Putting Diamond Maiden up close is a sure way to add value and consistency
- Long top line and big square hip with clean underline for perfect conformation
- Strong WW and YW EPD's and actual measures with a Top 5% \$M index

**PERFORMANCE TEST & GRADING SCORES**

Beginning WDA Ratio	121.83	Visual Grading Ratio	103.97
Gain Test ADG Ratio	132.02	<b>TOTAL Ratio Score 107.10</b>	
Ultrasound Scan Ratio	89.36		

**INDIVIDUAL PERFORMANCE RECORDS**

RATIO	BW	WW	YW	SCROTAL AS OF 1/25/24	REA	%IMF	RIB FAT	RUMP FAT	EXPECTED PROGENY DIFFERENCES								ULTRASOUND EPDs			INDEXES		
									CE	BW	WW	YW	MILK	TM	MCE	SC	REA	%IMF	RIB FAT	\$T	\$M	
CONTEMP	11	11	10		5	8	8	7	EPD	2.5	1.4	36	46	9	27.2	2.78	0.69	0.03	-0.4	-0.049	75.63	30.12
ADJ. TRAIT	77	567	1001	43	11.27	1.21	0.1	0.25	ACC	0.32	0.51	0.5	0.42	0.19	--	0.18	0.34	0	0	0	--	--

26

**CFR 862/2**

REG#: C1165261 DNA: DNA 21121059179 SV  
BRAND: CF 862/2 DOB: 3/5/22

**CF RANCHES  
LIGHT RED | HORNED**



\* EMS RING OF FIRE 130

**MR CJ 13/16**

CJ'S DIAMOND REFLECTION 1203

COLLIER FARMS CF 651/1

**TRIPLE B 3-6**

W FIVE 869

BONFIRE 8038

EMS COLOR ME SUGAR 811

CF DREAM CATCHER 914

\* CJ'S DIAMOND OF SOUL 509

NEW DIMENSION 805

COLLIER FARMS 166/8

W FIVE 565

W FIVE 5102

- Moderate frame sized bull with extra thickness and muscle expression
- Strong carcass from CJ genetics with a 12.75 REA and IMF pushing 3%
- Low birth weight, high yearling, huge Milk in Top 10% and \$M in the Top 30%

**PERFORMANCE TEST & GRADING SCORES**

Beginning WDA Ratio	125.96	Visual Grading Ratio	103.48
Gain Test ADG Ratio	113.18	<b>TOTAL Ratio Score 107.07</b>	
Ultrasound Scan Ratio	107.25		

**INDIVIDUAL PERFORMANCE RECORDS**

RATIO	BW	WW	YW	SCROTAL AS OF 1/25/24	REA	%IMF	RIB FAT	RUMP FAT	EXPECTED PROGENY DIFFERENCES								ULTRASOUND EPDs			INDEXES		
									CE	BW	WW	YW	MILK	TM	MCE	SC	REA	%IMF	RIB FAT	\$T	\$M	
CONTEMP	5	5	3		2	1	2	2	EPD	4.19	-0.2	28	47	12	25.7	2.69	0.42	0.08	0.12	-0.03	83.56	21.21
ADJ. TRAIT	70	514	1067	42	12.75	2.9	0.2	0.32	ACC	0.31	0.49	0.49	0.4	0.19	--	0.18	0.3	0	0	0	--	--

27

**HTC 2100**

REG#: C1163213 DNA:  
BRAND: HTC 2100 DOB: 3/10/22

**H. T. CHAPMAN  
RED | HORNED**



\*\* VISION 905

**CF FUSED VISION 327/4**

COLLIER FARMS CF 938/9

COLLIER FARMS CF 325/4

**HT CHAPMAN 835**

H. T. CHAPMAN 166/1

\*\* LOGAN 62M27

\*\* PENELOPE 293J11

\*\* FUSION 578/3

COLLIER FARMS 943/7

\*\* LOGAN 62M27

4C CLASSIC BEAUTY 607-9

CIRCLE C 5/6

H. T. CHAPMAN 138/2

- Great looking bull with big heart girth from a long line of big time cow families
- Extra long made with ample muscle and style, Big REA of 12.77 ratio 116
- Raised in the droughty south Texas brush country with no creep or pampering

**PERFORMANCE TEST & GRADING SCORES**

Beginning WDA Ratio	121.20	Visual Grading Ratio	103.72
Gain Test ADG Ratio	125.42	<b>TOTAL Ratio Score 106.97</b>	
Ultrasound Scan Ratio	96.96		

**INDIVIDUAL PERFORMANCE RECORDS**

RATIO	BW	WW	YW	SCROTAL AS OF 1/25/24	REA	%IMF	RIB FAT	RUMP FAT	EXPECTED PROGENY DIFFERENCES								ULTRASOUND EPDs			INDEXES		
									CE	BW	WW	YW	MILK	TM	MCE	SC	REA	%IMF	RIB FAT	\$T	\$M	
CONTEMP		95	109.1		116.3	77.7	115	93.1	EPD	4.22	0	11	33	8	13.1	2.89	-0.07	0.09	-0.15	-0.035	56.06	0.76
ADJ. TRAIT		553	989	45.5	12.77	1.57	0.23	0.27	ACC	0.06	0.24	0.46	0.36	0.18	--	0.02	0.19	0	0	0	--	--



28

**CAMPEC 36/2**

REG#: C1164394 DNA:  
BRAND: Camp 36/2 DOB: 4/3/22

**CAMPECHE CATTLE**  
RED | DE-HORNED



\*\* VISION 905  
**COLLIER FARMS CF 511/6**

COLLIER FARMS 725/9

CF ADRENALINE 170

**WB 64/6**

\*\* LOGAN'S BENGAL BABY 134/0

\*\* LOGAN 62M27  
\*\* PENELOPE 293J11

\*\* L2 CAPTAIN SUGAR 12/02  
\*\* KING'S LADY 764/7  
\*\* INFINITY 120/96  
\*\* OASIS 655

\*\* LOGAN 62M27  
\*\* BENGAL BABY 93/05

- Super square designed bull with outstanding conformation and soundness
- Sire CF 511/6 was a high grading and selling bull a few years back at the CF-PBS
- Vision, Adrenaline, and Logan's Bengal Baby are no stranger to the winner's circle

**PERFORMANCE TEST & GRADING SCORES**

Beginning WDA Ratio	112.10	Visual Grading Ratio	105.94
Gain Test ADG Ratio	123.54	<b>TOTAL Ratio Score</b>	<b>106.89</b>
Ultrasound Scan Ratio	91.74		

**INDIVIDUAL PERFORMANCE RECORDS**

	BW	WW	YW	SCROTAL AS OF 1/25/24	REA	%IMF	RIB FAT	RUMP FAT
RATIO	91.9	99			113	66.1	121.4	105.9
CONTEMP	3	2	1		1	3	1	2
ADJ. TRAIT	74	578	880	46	10.87	1.68	0.17	0.18

**EXPECTED PROGENY DIFFERENCES**

**ULTRASOUND EPDs**

**INDEXES**

	CE	BW	WW	YW	MILK	TM	MCE	SC	REA	%IMF	RIB FAT	\$T	\$M
EPD	2.33	1.1	19	30	7	16.0	2.73	0.17	-0.02	-0.12	-0.026	50.26	12.26
ACC	0.15	0.42	0	0	0	--	0.05	0	0	0	0	--	--

29

**CF 864/2**

REG#: C1165045 DNA: DNA 21121059177 SV  
BRAND: CF 864/2 DOB: 2/9/22

**COLLIER FARMS**  
RED | HORNED



\* EMS RING OF FIRE 130

**MR CJ 13/16**

CJ'S DIAMOND REFLECTION 1203

COLLIER FARMS 807/9

**COLLIER FARMS CF 179/5**

COLLIER FARMS CF 504/0

BONFIRE 8038  
EMS COLOR ME SUGAR 811

CF DREAM CATCHER 914  
\* CJ'S DIAMOND OF SOUL 509  
\*\* LOGAN 62M27  
\*\* PENELOPE 293J11

JESSE 120-7  
\*\* MISS TP 021/6

- Mega thick made bull with a clean underline, big rib shape and easy fleshing
- Outstanding birth to yearling spread in both actual and EPD performance
- High ratio for WW and YW with Top 30% for WW, YW, Milk, \$T and \$M index

**PERFORMANCE TEST & GRADING SCORES**

Beginning WDA Ratio	120.27	Visual Grading Ratio	104.22
Gain Test ADG Ratio	113.18	<b>TOTAL Ratio Score</b>	<b>106.85</b>
Ultrasound Scan Ratio	105.52		

**INDIVIDUAL PERFORMANCE RECORDS**

	BW	WW	YW	SCROTAL AS OF 1/25/24	REA	%IMF	RIB FAT	RUMP FAT
RATIO	99.6	107	106.2		105.1	130.6	112.5	91.2
CONTEMP	16	16	10		3	2	3	6
ADJ. TRAIT	74	676	1028	48	11.89	3.03	0.27	0.31

**EXPECTED PROGENY DIFFERENCES**

**ULTRASOUND EPDs**

**INDEXES**

	CE	BW	WW	YW	MILK	TM	MCE	SC	REA	%IMF	RIB FAT	\$T	\$M
EPD	2.47	1.1	33	52	10	26.4	1.95	0.53	-0.09	0.03	-0.04	91.45	21.97
ACC	0.32	0.51	0.49	0.41	0.18	--	0.18	0.31	0	0	0	--	--

30

**WMCC MR 2905**

REG#: P304774 DNA: DNA Z003485301 PV  
BRAND: BM 2905 DOB: 2/7/22

**WALKING M CATTLE CO**  
RED | POLLED



CF BROCK 450/3

**CF BRAVADO 373/5**

\*\* BETTY'S LAST 45/1

WB SOLUTION 67/6

**WB KESHA 94/9**

COLLIER FARMS CF 400/2

\*\* VISION 905  
RED ESSENCE 129/07

BRYAN RANCH 126/6  
DIAMOND W 34/3  
CF DREAM CATCHER 914  
\*\* LOGAN'S BENGAL BABY 134/0

V - SEVEN 13/0  
SOUTHERN P97

- POLLED bull buyers study the style, color, class and soundness in volume here
- Bravado on a Solution daughter hits big for WW growth and EPD in Top 30%
- Red Essence, Betty's Last, Logan's Bengal Baby and Oasis give him the Top \$% \$M

**PERFORMANCE TEST & GRADING SCORES**

Beginning WDA Ratio	106.12	Visual Grading Ratio	106.67
Gain Test ADG Ratio	126.37	<b>TOTAL Ratio Score</b>	<b>106.79</b>
Ultrasound Scan Ratio	88.73		

**INDIVIDUAL PERFORMANCE RECORDS**

	BW	WW	YW	SCROTAL AS OF 1/25/24	REA	%IMF	RIB FAT	RUMP FAT
RATIO	99.6	118	100		100	100	100	100
CONTEMP	3	3	1		1	1	1	1
ADJ. TRAIT	78	605	865	40	10.51	1.44	0.11	0.22

**EXPECTED PROGENY DIFFERENCES**

**ULTRASOUND EPDs**

**INDEXES**

	CE	BW	WW	YW	MILK	TM	MCE	SC	REA	%IMF	RIB FAT	\$T	\$M
EPD	2.52	1	34	34	8	24.4	2.85	0.63	-0.11	-0.09	-0.044	59.38	32.73
ACC	0.33	0.5	0.48	0.43	0.14	--	0.17	0.32	0	0	0	--	--

31

**GMR MR POLLED 852**

REG#: C1170876 DNA: DNA NE02971801 PV  
BRAND: GMR 852 DOB: 1/30/22

**GOLDEN MEADOWS RANCH LLC**

RED | SCURRED



CF RIPTIDE 875/3  
CF HIGH TIDE 163/9  
CAIN DAY DREAM 530Z

\*\* TABASCO 3018K10  
\* CF RAQUEL 933/9  
CF DREAM CATCHER 914  
\* MISS CJ 530  
\*\* LOGAN 62M27  
\*\* LADY LEGACY 338/12

- Mega-deep made bull with cool extended front, tons of capacity and soundness
- Scurred polled bull with great cow family genetics like Day Dream and Midas Queen
- Balanced data across the chart with big WDA and ADG test ratios, \$M in Top 30%

COLLIER FARMS 424/8  
CF MIDAS QUEEN'S LEGACY 932/1  
MIDAS QUEEN 34/1

MIDAS 42/5  
LINCCEUM 183-4

**PERFORMANCE TEST & GRADING SCORES**

Beginning WDA Ratio	110.58	Visual Grading Ratio	108.39
Gain Test ADG Ratio	113.18	TOTAL Ratio Score	106.74
Ultrasound Scan Ratio	84.86		

**INDIVIDUAL PERFORMANCE RECORDS**

	BW	WW	YW	SCROTAL AS OF 1/25/24	REA	%IMF	RIB FAT	RUMP FAT
RATIO	97.6	97	95.2		92.8	95.5	90	80
CONTEMP	9	3	3		3	2	2	3
ADJ. TRAIT	70	608	780	40	10.25	1.05	0.09	0.2

**EXPECTED PROGENY DIFFERENCES**

**ULTRASOUND EPDs**

**INDEXES**

	CE	BW	WW	YW	MILK	TM	MCE	SC	REA	%IMF	RIB FAT	\$T	\$M
EPD	3.05	0.7	26	35	9	21.7	2.73	0.21	0.05	-0.08	-0.031	60.67	21.27
ACC	0.32	0.53	0.5	0.42	0.17	--	0.18	0.29	0	0	0	--	--

32

**SWB 02022**

REG#: C1157543 DNA: DNA NE02378298 PV  
BRAND: SWB 2022 DOB: 1/11/22

**BOUNDS SWINGING B RANCH**

RED | HORNED



SPEAR RANCHES 9020  
\*\* MAVERICK 17/557  
\*\* MISS TABASCO 929/4

SALSA 94-403  
SPEAR RANCHES 5130-2C

- Huge capacity, bone, volume and power run deep in this Maverick son and Love Song
- Low birth weight and calving ease mixed with strong carcass and milk numbers
- Maternal genetics galore; Top 10% \$M and BW, Top 15% Milk and Calving Ease

\*\* FUSION 578/3  
CF LOVE SONG 421/7  
PRINCESS JACKIE 1325

\*\* TABASCO 3018K10  
COLLIER FARMS 83/8  
\*\* TABASCO 3018K10  
\*\* PHANTOM'S DIAMOND 119/9

KING PIN BF950  
JACKLIN 94/10

**PERFORMANCE TEST & GRADING SCORES**

Beginning WDA Ratio	114.86	Visual Grading Ratio	106.67
Gain Test ADG Ratio	101.33	TOTAL Ratio Score	106.66
Ultrasound Scan Ratio	103.65		

**INDIVIDUAL PERFORMANCE RECORDS**

	BW	WW	YW	SCROTAL AS OF 1/25/24	REA	%IMF	RIB FAT	RUMP FAT
RATIO	98.2	97			91.7	125.3	86.7	134
CONTEMP	30	3	1		2	1	2	1
ADJ. TRAIT	73	541	983	47	10.6	3.32	0.26	0.63

**EXPECTED PROGENY DIFFERENCES**

**ULTRASOUND EPDs**

**INDEXES**

	CE	BW	WW	YW	MILK	TM	MCE	SC	REA	%IMF	RIB FAT	\$T	\$M
EPD	5	-1.1	25	34	11	23.2	3.39	0.62	-0.33	0.05	-0.043	59.65	27.25
ACC	0.2	0.52	0.5	0.5	0.28	--	0.06	0.34	0.46	0.49	0.44	--	--

33

**V7 201/22**

REG#: C1177780 DNA:  
BRAND: V7 201/22 DOB: 2/23/22

**V - SEVEN**

RED | DE-HORNED



\*\* VISION 905  
COLLIER FARMS CF 593/6  
MAIDEN SUGAR 52/02

\*\* LOGAN 62M27  
\*\* PENELOPE 293J11

- Here is the big boned classic made bull of the group with great lines and volume
- Strong individual growth and EPDs, solid \$T index and monster WDA ratio
- Excellent maternal genetics with Vision, Synergy, Penelope and the 450 cow

COLLIER FARMS CF 140/0  
V7 2050/6  
V - SEVEN 1559

\*\* SYNERGY 84/95  
L TWO RANCH 88/93  
\*\* LOGAN 62M27  
\*\* SEVEN-C ANDERSON 450

HUBBLE 45/8  
V - SEVEN 166/4

**PERFORMANCE TEST & GRADING SCORES**

Beginning WDA Ratio	134.65	Visual Grading Ratio	104.46
Gain Test ADG Ratio	108.47	TOTAL Ratio Score	106.65
Ultrasound Scan Ratio	92.18		

**INDIVIDUAL PERFORMANCE RECORDS**

	BW	WW	YW	SCROTAL AS OF 1/25/24	REA	%IMF	RIB FAT	RUMP FAT
RATIO		100	100		100	100	100	100
CONTEMP	1	1	1		1	1	1	1
ADJ. TRAIT	81	676	1052	66	10.86	1.74	0.24	0.31

**EXPECTED PROGENY DIFFERENCES**

**ULTRASOUND EPDs**

**INDEXES**

	CE	BW	WW	YW	MILK	TM	MCE	SC	REA	%IMF	RIB FAT	\$T	\$M
EPD	1.91	1.6	23	45	8	19.7	2.62	0.22	-0.19	-0.15	-0.041	76.08	9.59
ACC	0.34	0.56	0.55	0.49	0.21	--	0.18	0.37	0	0	0	--	--



34

**CF 977/2**

REG#: C1165342 DNA: DNA 62521017871 SV  
BRAND: CF 977/2 DOB: 2/27/22

**COLLIER FARMS**  
LIGHT RED | HORNED



CF DREAM CATCHER 914 \*\* L2 CAPTAIN SUGAR 12/02  
\*\* OASIS 655  
CF SO BRO 758/6 \*\* LOGAN'S BENGAL BABY 134/0  
\*\* LOGAN 62M27  
\*\* BENGAL BABY 93/05  
NEW DIMENSION 805 V - SEVEN 501  
V - SEVEN 1673  
COLLIER FARMS CF 402/5 \*\* BLACK JACK  
HS HEAVENLY HATTIE 62T14 HARMONY 62K11

- Solution's Bro back on a full sibling to Red Bull 511 on bottom has bull power deep
- Great growth traits and EPDs across the chart proven by high WDA and ADG ratios
- Big WW and YW measures with Top 25% WW and \$M index, Top 35% YW, Milk, \$T

PERFORMANCE TEST & GRADING SCORES			
Beginning WDA Ratio	129.94	Visual Grading Ratio	102.74
Gain Test ADG Ratio	113.18	TOTAL Ratio Score	106.63
Ultrasound Scan Ratio	104.00		

INDIVIDUAL PERFORMANCE RECORDS								EXPECTED PROGENY DIFFERENCES								ULTRASOUND EPDs			INDEXES				
	BW	WW	YW	SCROTAL AS OF 1/25/24	REA	%IMF	RIB FAT	RUMP FAT		CE	BW	WW	YW	MILK	TM	MCE	SC	REA	%IMF	RIB FAT	\$T	\$M	
RATIO	99.6	104	101.3		100	100	100	100															
CONTEMP	14	14	14		1	1	1	1	EPD	1.9	2	33	48	10	26.0	2.9	0.53	0.07	-0.13	-0.041	83.19	22.36	
ADJ. TRAIT	80	681	1029	43	13.39	2.22	0.35	0.29	ACC	0.32	0.52	0.51	0.43	0.21	--	0.18	0.35	0	0	0	--	--	

35

**CFR 859/2**

REG#: C1165260 DNA: DNA 21121059184 SV  
BRAND: CF 859/2 DOB: 2/24/22

**CF RANCHES**  
RED | POLLED



CHRK GENERATOR 2010 CHRK GENESIS 1500T  
FOUR BAR S FARM 907  
CHANNAROCK CHRK 544E \* DOC 2D-0C81  
CHANNAROCK CHRK 1886X CHANNAROCK 1295/5  
\*\* VISION 905 \*\* LOGAN 62M27  
\*\* PENELOPE 293J11  
COLLIER FARMS CF 116/5 L2 CAPTAIN LUCEY 116/01  
FARRAH'S LUCEY 46/06 \*\* FARRAH LADY 2/92

- Polled Generator son with plenty of muscle definition, rib shape and flex
- Outstanding maternal bottom side with 293 and Farrah Lady cow families
- Big growth ratios individually and on test with Top 30% WW, YW, Milk, SC, \$T, \$M

PERFORMANCE TEST & GRADING SCORES			
Beginning WDA Ratio	122.83	Visual Grading Ratio	101.02
Gain Test ADG Ratio	136.72	TOTAL Ratio Score	106.41
Ultrasound Scan Ratio	97.39		

INDIVIDUAL PERFORMANCE RECORDS								EXPECTED PROGENY DIFFERENCES								ULTRASOUND EPDs			INDEXES			
	BW	WW	YW	SCROTAL AS OF 1/25/24	REA	%IMF	RIB FAT	RUMP FAT		CE	BW	WW	YW	MILK	TM	MCE	SC	REA	%IMF	RIB FAT	\$T	\$M
RATIO	94.5	105	102.8		98.8	100	94.1	103.1														
CONTEMP	16	16	10		2	2	2	1	EPD	3.72	0.4	32	51	10	26.4	2.45	0.7	0.12	0.07	-0.027	89.75	23.3
ADJ. TRAIT	78	658	995	41	10.98	2.36	0.16	0.33	ACC	0.32	0.5	0.49	0.41	0.18	--	0.18	0.3	0	0	0	--	--

36

**3B 22-6**

REG#: C1167690 DNA: DNA NE02965572 PV  
BRAND: 3B 22-6 DOB: 2/15/22

**TRIPLE B**  
RED | HORNED



CF TROUBADOR 879/3 NEW DIMENSION 805  
\* CF RAQUEL 933/9  
COLLIER FARMS CF 687/8 \*\* FUSION 578/3  
COLLIER FARMS CF 209/4 TRIPLE B 1-4  
CF GULF STREAM 273/7 CF RIPTIDE 875/3  
\*\* THE PICTURE COW 463/3  
TRIPLE B 3B 20-3 VMAX 649/1  
TRIPLE B 5-13 FUSIONS GRAND DESIGN 956/8

- Troubador on Gulf Stream hit hard with massive performance growth and carcass
- Huge WDA and ADG test ratios combine with WW over 700 and YW nearing 1150
- Outstanding carcass with 14" REA, 3.5%IMF: Top 10% \$M and Top 20% WW

PERFORMANCE TEST & GRADING SCORES			
Beginning WDA Ratio	130.83	Visual Grading Ratio	99.30
Gain Test ADG Ratio	120.72	TOTAL Ratio Score	106.32
Ultrasound Scan Ratio	116.61		

INDIVIDUAL PERFORMANCE RECORDS								EXPECTED PROGENY DIFFERENCES								ULTRASOUND EPDs			INDEXES			
	BW	WW	YW	SCROTAL AS OF 1/25/24	REA	%IMF	RIB FAT	RUMP FAT		CE	BW	WW	YW	MILK	TM	MCE	SC	REA	%IMF	RIB FAT	\$T	\$M
RATIO	98.8	106	100		100	100	100	100														
CONTEMP	3	2	1		1	1	1	1	EPD	2.5	0.8	34	46	9	26.5	3.07	0.67	0.17	0.16	-0.025	81.83	28.1
ADJ. TRAIT	83	711	1142	46	14.02	3.58	0.23	0.25	ACC	0.31	0.46	0.43	0.38	0.13	--	0.17	0.31	0	0	0	--	--

37

**CR RAN 225**

REG#: P335847 DNA:  
BRAND: C-C 210 DOB: 3/13/22

**CROSS CREEK RANCH**

RED | HORNE



WPR'S CAPONE 1333  
WALLEN PRAIRIE WPR'S 1726

\* WPR'S ONE HOTT MOMMA II 1416

CF DREAM CATCHER 914

COLLIER FARMS CF 862/8

\* CF RAQUEL 933/9

WPR'S HEY JACK 1127  
WPR'S BOMBSHELL 1042

\*\* WPR'S THE TOTAL PACKAGE 7595

\*\* WPR'S ANNABELLE 1248

\*\* L2 CAPTAIN SUGAR 12/02

\*\* OASIS 655

\*\* LOGAN 62M27

JUNGLE WHISPER 49/1

- Outstanding power bull with expressive muscle pattern, big middle and soggy
- Strong growth traits with a 797lb 205 WW and ADG Test Ratio of 143!
- Impeccable bottom side maternal genetics with Oasis and Raquel cow families

**PERFORMANCE TEST & GRADING SCORES**

Beginning WDA Ratio	128.61	Visual Grading Ratio	100.53
Gain Test ADG Ratio	143.31	TOTAL Ratio Score	106.32
Ultrasound Scan Ratio	87.56		

**INDIVIDUAL PERFORMANCE RECORDS**

	BW	WW	YW	SCROTAL AS OF 1/25/24	REA	%IMF	RIB FAT	RUMP FAT
RATIO								
CONTEMP		1						
ADJ. TRAIT	85	797		43				

**EXPECTED PROGENY DIFFERENCES**

	CE	BW	WW	YW	MILK	TM	MCE	SC	REA	%IMF	RIB FAT	\$T	\$M
EPD	1.19	2.1	23	39	9	20.4	3.24	0.09	0.31	0.01	-0.039	68.8	12.55
ACC	0	0	0	0	0	--	0	0	0	0	0	--	--

**ULTRASOUND EPDs**

**INDEXES**

38

**CF 867/2**

REG#: C1165047 DNA: DNA 21121059174 SV  
BRAND: CF 867/2 DOB: 2/18/22

**COLLIER FARMS**

RED | POLLED



\*\* FUSION 578/3

CF SEQUOIA 495/8

CF CRIMSON LEGACY 701/3

COLLIER FARMS CF 410/0

COLLIER FARMS CF 615/6

COLLIER FARMS CF 659/1

\*\* TABASCO 3018K10

\*\* PHANTOM'S DIAMOND 119/9

COLLIER FARMS CF 341/0

TRIPLE P P14/3

\*\* LOGAN 62M27

PERFECT NIRVANA 005

\*\* VISION 905

\*\* MISS MAGIC COFFEE 91/4

- POLLED bull with lots of class and style to produce that show winning appeal
- Outstanding heifer bull prospect with LBW of 65, CED and BW EPD in Top 3%
- Noteworthy carcass scan results and great donor dams top and bottom

**PERFORMANCE TEST & GRADING SCORES**

Beginning WDA Ratio	110.95	Visual Grading Ratio	105.20
Gain Test ADG Ratio	116.95	TOTAL Ratio Score	106.25
Ultrasound Scan Ratio	98.19		

**INDIVIDUAL PERFORMANCE RECORDS**

	BW	WW	YW	SCROTAL AS OF 1/25/24	REA	%IMF	RIB FAT	RUMP FAT
RATIO	113.4	83	100		101.1	100	100	96.9
CONTEMP	16	16	1		1	1	1	2
ADJ. TRAIT	65	519	928	44	11.23	2.36	0.17	0.31

**EXPECTED PROGENY DIFFERENCES**

	CE	BW	WW	YW	MILK	TM	MCE	SC	REA	%IMF	RIB FAT	\$T	\$M
EPD	7.11	-2	12	20	9	15.3	3.01	0.01	-0.29	-0.01	-0.033	34.71	15.63
ACC	0.32	0.5	0.49	0.41	0.18	--	0.18	0.33	0.36	0.4	0.34	--	--

**ULTRASOUND EPDs**

**INDEXES**

39

**SWB 03822**

REG#: C1151408 DNA: DNA NE02378770 PV  
BRAND: SWB 3822 DOB: 2/11/22

**BOUNDS SWINGING B RANCH**

RED | HORNE



MCALISTER 4521

SWB PETERBILT 08718

GYPSY LADY 33

CF BRAVADO 373/5

CF MONEY HONEY 705/0

\* COLLIER FARMS CF 189/5

J & K 1001

KENT MINDEMANN 95

CF DREAM CATCHER 914

CAINS MS CASEY 4-35 938X

CF BROCK 450/3

\*\* BETTY'S LAST 45/1

\*\* TABASCO 3018K10

COLLIER FARMS CF 988/9

- Outstanding looks combining bone, style, power and volume for completeness
- Strong REA carcass measures and EPD to blend with great bottom side genetics
- Performance traits run wild with Top 10% SC, REA, \$M, Top 25% WW, YW, \$T

**PERFORMANCE TEST & GRADING SCORES**

Beginning WDA Ratio	114.59	Visual Grading Ratio	105.20
Gain Test ADG Ratio	104.63	TOTAL Ratio Score	106.19
Ultrasound Scan Ratio	106.24		

**INDIVIDUAL PERFORMANCE RECORDS**

	BW	WW	YW	SCROTAL AS OF 1/25/24	REA	%IMF	RIB FAT	RUMP FAT
RATIO	99.7	100	95		106.1	76.7	73.3	62.7
CONTEMP	17	18	4		5	14	11	14
ADJ. TRAIT	69	585	919	44	12.75	2.77	0.22	0.32

**EXPECTED PROGENY DIFFERENCES**

	CE	BW	WW	YW	MILK	TM	MCE	SC	REA	%IMF	RIB FAT	\$T	\$M
EPD	2.47	0.6	38	54	9	28.1	2.45	0.92	0.65	-0.05	-0.044	94.98	28.86
ACC	0.32	0.52	0.51	0.5	0.14	--	0.17	0.31	0.51	0.57	0.49	--	--

**ULTRASOUND EPDs**

**INDEXES**



40

**SWB 02522**

REG#: C1158223 DNA: DNA NE02378447 PV  
BRAND: SWB 2522 DOB: 1/17/22

**BOUNDS SWINGING B RANCH**

RED | HORNE



J & K 1001  
**MCALISTER 4521**  
KENT MINDEMANN 95  
\*\* PAINTED TIGER 3-390  
**JK AVA TIGRESS 156/4**  
AVA 778

SIMON CREEK 5/34  
SIMON CREEK 317  
LASATER BEEFMASTER 3265  
KENT MINDEMANN 546  
\*\* PAINTED WARRIOR 0026  
\*\* DUNKIN FARMS 1-126  
\*\* CAVALIER 19/5  
\*\* SEX LIFE 388

- Conversion King deluxe with a high ADG, big time muscle and super fleshing ease
- Massive made bull with outstanding 15" REA and IMF ratio of 116 and still LBW
- One of the best terminal trait bulls in offering with Top 3% REA, 10% YW & \$T

PERFORMANCE TEST & GRADING SCORES			
Beginning WDA Ratio	107.93	Visual Grading Ratio	100.53
Gain Test ADG Ratio	131.80	TOTAL Ratio Score	106.05
Ultrasound Scan Ratio	117.11		

INDIVIDUAL PERFORMANCE RECORDS								EXPECTED PROGENY DIFFERENCES								ULTRASOUND EPDs			INDEXES				
	BW	WW	YW	SCROTAL AS OF 1/25/24	REA	%IMF	RIB FAT	RUMP FAT		CE	BW	WW	YW	MILK	TM	MCE	SC	REA	%IMF	RIB FAT	\$T	\$M	
RATIO	105.4	94			119	116.5	93.5	143.5		EPD	3.44	0.9	39	69	8	27.9	3.74	1.32	0.88	-0.1	-0.028	118.48	20.89
CONTEMP	30	8	1		1	3	5	1		ACC	0.32	0.56	0.55	0.55	0.29	--	0.19	0.43	0.54	0.59	0.52	--	--
ADJ. TRAIT	68	457	1200	47	15.69	2.96	0.29	0.66															

41

**SWB 11422**

REG#: C1158696 DNA: DNA NE02965002 PV  
BRAND: SWB 11422 DOB: 1/2/22

**BOUNDS SWINGING B RANCH**

RED | HORNE



NEW DIMENSION 805  
**SWB LUCKENBACH 08614**  
AUTUMN'S GIRL 31-10  
\*\* RED SUGAR 104/93  
**CHRK SWEET REBA 1901Y**  
\*\* CHRK MISS REBA 1194/5

V - SEVEN 501  
V - SEVEN 1673  
BULLET PROOF 864  
JAZZIE 293L55  
\*\* CHEROKEE PHANTOM USA 122/90  
\*\* SUGAR ANN 45/6  
\* DOC 2D-0C81  
CHANNAROCK FARM 906/2

- Another great calving ease bull with actual LBW, Top 30% CED and BW EPD's
- Big time carcass and muscling bull with a REA pushing 15" and EPD in Top 15%
- Noteworthy pedigree boasting New Dimension, Bullet Proof, Red Sugar and Reba

PERFORMANCE TEST & GRADING SCORES			
Beginning WDA Ratio	108.11	Visual Grading Ratio	105.69
Gain Test ADG Ratio	101.31	TOTAL Ratio Score	105.91
Ultrasound Scan Ratio	109.84		

INDIVIDUAL PERFORMANCE RECORDS								EXPECTED PROGENY DIFFERENCES								ULTRASOUND EPDs			INDEXES				
	BW	WW	YW	SCROTAL AS OF 1/25/24	REA	%IMF	RIB FAT	RUMP FAT		CE	BW	WW	YW	MILK	TM	MCE	SC	REA	%IMF	RIB FAT	\$T	\$M	
RATIO	98.2	90			113.4	91.7	77.4	80.4		EPD	4.47	-0.2	25	38	9	21.3	3.32	0.24	0.5	-0.13	-0.037	66.16	19.8
CONTEMP	30	8	1		2	5	6	6		ACC	0.32	0.55	0.47	0.46	0.19	--	0.18	0.33	0.42	0.45	0.41	--	--
ADJ. TRAIT	73	439	983	38	14.95	2.33	0.24	0.37															

42

**CF 981/2**

REG#: C1165345 DNA:  
BRAND: CF 981/2 DOB: 4/5/22

**COLLIER FARMS**

RED | SCURRED



\*\* CF SUGAR BRITCHES 040  
**CF DIAMOND BRITCHES 412/7**  
DIAMOND MAIDEN 1931/4  
SLICK 16  
**COLLIER FARMS CF 821/5**  
COLLIER FARMS CF 753/3

\*\* L2 CAPTAIN SUGAR 12/02  
\*\* OASIS 655  
\*\* CAVALIER 19/5  
L2 MAIDEN LADY 154/00  
COLLIER FARMS 774/7  
V - SEVEN 1723  
COLLIER FARMS 807/9  
\* COLLIER FARMS CF 904/9

- Extremely balanced bull with long top, clean underline and extra thickness
- Scurred bull bringing in polled from Slick 16; Big Test ratios of 115 and 123
- Great performance results with IMF ratio 133, Top 30% WW and Milk, 10% \$M

PERFORMANCE TEST & GRADING SCORES			
Beginning WDA Ratio	115.69	Visual Grading Ratio	102.25
Gain Test ADG Ratio	123.54	TOTAL Ratio Score	105.85
Ultrasound Scan Ratio	103.56		

INDIVIDUAL PERFORMANCE RECORDS								EXPECTED PROGENY DIFFERENCES								ULTRASOUND EPDs			INDEXES				
	BW	WW	YW	SCROTAL AS OF 1/25/24	REA	%IMF	RIB FAT	RUMP FAT		CE	BW	WW	YW	MILK	TM	MCE	SC	REA	%IMF	RIB FAT	\$T	\$M	
RATIO	100.7	102	90.4		99.9	133.2	110	100		EPD	2.43	1.7	30	34	10	25.0	2.79	0.38	-0.04	0.02	-0.025	59.83	28.67
CONTEMP	11	11	10		4	2	6	5		ACC	0.16	0.47	0.46	0.37	0.18	--	0.04	0.23	0	0	0	--	--
ADJ. TRAIT	77	559	898	46	11.62	2.89	0.22	0.29															

43

V7 210/22

REG#: C1163682 DNA: DNA 9518022891 SV  
BRAND: V7 210/22 DOB: 2/25/22

V - SEVEN  
RED | DE-HORNED



CF RUSTON 871/3  
COLLIER FARMS CF 760/6

INFINITE OASIS 020

V - SEVEN 301

V7 2018/5

V - SEVEN 1673

\*\* TABASCO 3018K10  
\* CF RAQUEL 933/9

L2 CAPTAIN LUCEY 116/01  
\*\* OASIS 655  
V - SEVEN 3/0  
V - SEVEN 1423

CIRCLE C 40/01  
V - SEVEN 175/4

- Very masculine made bull with strong top, muscle, bone, and volume
- Outstanding growth and gain data with a 127 WDA ratio and ADG of 112
- Moderate birth weight, solid WW and big YW over 1000 and REA over 12"

PERFORMANCE TEST & GRADING SCORES

Beginning WDA Ratio	127.47	Visual Grading Ratio	102.49
Gain Test ADG Ratio	112.24	TOTAL Ratio Score	105.69
Ultrasound Scan Ratio	99.72		

INDIVIDUAL PERFORMANCE RECORDS

	BW	WW	YW	SCROTAL AS OF 1/25/24	REA	%IMF	RIB FAT	RUMP FAT
RATIO	103.7	101	106.2		112.5	93.3	83.3	111.1
CONTEMP	14	3	2		1	2	2	1
ADJ. TRAIT	73	618	1011	44	12.39	2.08	0.15	0.4

EXPECTED PROGENY DIFFERENCES

ULTRASOUND EPDs

INDEXES

	CE	BW	WW	YW	MILK	TM	MCE	SC	REA	%IMF	RIB FAT	\$T	\$M
EPD	3.74	0.2	15	41	9	16.8	3.08	0.15	0.05	-0.11	-0.045	70.62	3.18
ACC	0.32	0.51	0.45	0.38	0.16	--	0.18	0.28	0	0	0	--	--

44

CF 979/2

REG#: C1165343 DNA: DNA 62521017868 PV  
BRAND: CF 979/2 DOB: 3/22/22

COLLIER FARMS  
RED | HORNED



\*\* CF SUGAR BRITCHES 040

CF DIAMOND BRITCHES 412/7

DIAMOND MAIDEN 1931/4

CF TROUBADOR 879/3

COLLIER FARMS CF 932/7

COLLIER FARMS CF 755/3

\*\* L2 CAPTAIN SUGAR 12/02  
\*\* OASIS 655

\*\* CAVALIER 19/5  
L2 MAIDEN LADY 154/00  
NEW DIMENSION 805  
\* CF RAQUEL 933/9

\*\* TABASCO 3018K10  
COLLIER FARMS 802/8

- Dark red, clubby made bull with square hip and extended front
- Impressive test ratios with 118 WDA and 111 ADG proving his actual performance
- Diamond Maiden was the highest value donor in 2023 with progeny sales records

PERFORMANCE TEST & GRADING SCORES

Beginning WDA Ratio	118.57	Visual Grading Ratio	106.18
Gain Test ADG Ratio	111.30	TOTAL Ratio Score	105.67
Ultrasound Scan Ratio	83.51		

INDIVIDUAL PERFORMANCE RECORDS

	BW	WW	YW	SCROTAL AS OF 1/25/24	REA	%IMF	RIB FAT	RUMP FAT
RATIO	99.4	91	92.5		88.9	38.7	35	48.3
CONTEMP	11	11	10		9	9	9	9
ADJ. TRAIT	78	501	919	44	10.34	0.84	0.07	0.14

EXPECTED PROGENY DIFFERENCES

ULTRASOUND EPDs

INDEXES

	CE	BW	WW	YW	MILK	TM	MCE	SC	REA	%IMF	RIB FAT	\$T	\$M
EPD	2.93	1	27	34	7	19.9	3.08	0.44	-0.01	-0.33	-0.048	56.21	21.68
ACC	0.32	0.51	0.5	0.42	0.2	--	0.18	0.34	0	0	0	--	--

45

SIDDONS 259

REG#: C1161643 DNA:  
BRAND: Siddons 259 DOB: 5/22/22

SIDDONS  
RED | HORNED



NEW DIMENSION 805  
COLLIER FARMS CF 146/9

HS HEAVENLY HATTIE 62T14

MAXIMUM 42/13

MS. CATHY M. 7/138

FARM AND RANCH FR 939

V - SEVEN 501  
V - SEVEN 1673

\*\* BLACK JACK 21  
HARMONY 62K11  
L2 MAX L2139/09  
L TWO RANCH 8/04

HOMBRE PERFECTO 7-08  
FARM AND RANCH FR 344

- High growth, big boned and extra thick just begin to hit on the phenotypic quality
- Massive test ratios with WDA or 119 and ADG of 124 against tough con-temps.
- Strong milk EPD combined with solid actual growth records: WW pushing 700!
- Scanned at 317 days of age. Actual scan data: REA 10.9; IMF 1.30; Fat 0.16

PERFORMANCE TEST & GRADING SCORES

Beginning WDA Ratio	119.72	Visual Grading Ratio	103.23
Gain Test ADG Ratio	124.48	TOTAL Ratio Score	105.57
Ultrasound Scan Ratio	88.88		

INDIVIDUAL PERFORMANCE RECORDS

	BW	WW	YW	SCROTAL AS OF 1/25/24	REA	%IMF	RIB FAT	RUMP FAT
RATIO	100	100						
CONTEMP	1	1	1					
ADJ. TRAIT	70	696	927	48				

EXPECTED PROGENY DIFFERENCES

ULTRASOUND EPDs

INDEXES

	CE	BW	WW	YW	MILK	TM	MCE	SC	REA	%IMF	RIB FAT	\$T	\$M
EPD	1.45	2	25	46	10	22.4	2.34	0.2	0	-0.19	-0.04	78.8	12.27
ACC	0.07	0.27	0.32	0.29	0.14	--	0.03	0.16	0.2	0.22	0.2	--	--



46

**SWB 05922**

REG#: C1158676 DNA: DNA NE02901552 PV  
BRAND: SWB 5922 DOB: 3/19/22

**BOUNDS SWINGING B RANCH**  
RED MOT UL | HORNED



SUMMIT 5306  
SWB TETON 06918  
SWB DOTSY 76-10  
EMS SMOOTH CAVALIER 708  
EMS HEARTACHE 38  
EMMONS 4-1

J & K 1001  
M & M CATTLE 0714  
BULLET PROOF 864  
BLACK STACI 420  
\*\* CAVALIER 19/5  
EMS BODY BY SMOOTH 0-31  
EMS SMOOTH POWER BALL 0-0  
EMMONS RANCH 9-43

- A stylish made bull with length and depth combining pedigree and performance
- Teton and Heartache produced lot 4 as well : outstanding individual growth
- Impressive EPD profile and carcass scan; Top 5% IMF, 15% WW, YW, SC, \$T

PERFORMANCE TEST & GRADING SCORES			
Beginning WDA Ratio	102.56	Visual Grading Ratio	102.25
Gain Test ADG Ratio	117.89	TOTAL Ratio Score	105.14
Ultrasound Scan Ratio	115.22		

INDIVIDUAL PERFORMANCE RECORDS								EXPECTED PROGENY DIFFERENCES								ULTRASOUND EPDs			INDEXES				
	BW	WW	YW	SCROTAL AS OF 1/25/24	REA	%IMF	RIB FAT	RUMP FAT		CE	BW	WW	YW	MILK	TM	MCE	SC	REA	%IMF	RIB FAT	\$T	\$M	
RATIO	95.6	113			101.8	110.6	126.9	153.1															
CONTEMP	30	18	1		6	2	2	2	EPD	1.72	1.7	39	60	7	26.9	3.07	1.03	0.4	0.22	-0.02	106.62	24.04	
ADJ. TRAIT	75	600	1096	46	12.61	3.98	0.33	0.75	ACC	0.32	0.56	0.54	0.54	0.17	--	0.18	0.32	0.54	0.59	0.52	--	--	

47

**SWB 08422**

REG#: C1153751 DNA: DNA NE02901434 PV  
BRAND: SWB 8422 DOB: 4/19/22

**BOUNDS SWINGING B RANCH**  
RED | HORNED



SUMMIT 5306  
CAIN CCC BENTLEY 462F8  
\* DESTINY 4622  
EMS EASY RYDER 247  
EMS EASY KEEPIN 654  
EMMONS 987

J & K 1001  
M & M CATTLE 0714  
J & K 1001  
\* FRENZEL 971  
RED RYDER 8035  
\* EMS BUFF'S DREAMLADY 8057  
\*\* PAINTED TIGER 3-390  
EMS BODY BY SMOOTH 0-31

- Solid looks combine with great performance traits and EPDs across chart
- Low BW, with strong WW and YW and monster carcass with 4.4% IMF
- Outstanding EPD's; Top 3% REA, Top 4% IMF, Top 10% \$T, Top 15% YW

PERFORMANCE TEST & GRADING SCORES			
Beginning WDA Ratio	104.03	Visual Grading Ratio	101.51
Gain Test ADG Ratio	114.94	TOTAL Ratio Score	104.99
Ultrasound Scan Ratio	120.37		

INDIVIDUAL PERFORMANCE RECORDS								EXPECTED PROGENY DIFFERENCES								ULTRASOUND EPDs			INDEXES				
	BW	WW	YW	SCROTAL AS OF 1/25/24	REA	%IMF	RIB FAT	RUMP FAT		CE	BW	WW	YW	MILK	TM	MCE	SC	REA	%IMF	RIB FAT	\$T	\$M	
RATIO	93.7	105	98		109.8	121.9	120	105.9															
CONTEMP	11	18	5		3	1	5	6	EPD	3.39	0.1	31	64	11	26.8	2.68	0.67	0.88	0.26	-0.004	114.09	14.2	
ADJ. TRAIT	71	615	1045	42	13.2	4.4	0.36	0.54	ACC	0.32	0.52	0.51	0.51	0.17	--	0.18	0.34	0.51	0.57	0.49	--	--	

48

**CF 870/2**

REG#: C1174490 DNA: DNA 21121059172 PV  
BRAND: CF 870/2 DOB: 1/24/22

**COLLIER FARMS**  
RED MOT UL | HORNED



CF DREAM CATCHER 914  
CF CODIGO 906/8  
CF PICTURE'S PORTRAIT 794/6  
KING PIN BF950  
PRINCESS JACKIE 1325  
JACKLIN 94/10

\*\* L2 CAPTAIN SUGAR 12/02  
\*\* OASIS 655  
CF RIPTIDE 875/3  
\*\* THE PICTURE COW 463/3  
\*\* SPARTACUS 86/653  
APHRODITE 852  
L2 CAPTAIN JACK 43/07  
L2 SIMPLY SUGAR 78/99

- Soft made bull with piles of bone, body, power and muscling
- Codigo progeny are topping female sales and bulls are topping performance tests
- Huge WW of 766, strong REA and YW, \$T in Top 15% WW, YW Top 20% \$T 30% \$M

PERFORMANCE TEST & GRADING SCORES			
Beginning WDA Ratio	119.60	Visual Grading Ratio	104.22
Gain Test ADG Ratio	109.42	TOTAL Ratio Score	104.94
Ultrasound Scan Ratio	90.91		

INDIVIDUAL PERFORMANCE RECORDS								EXPECTED PROGENY DIFFERENCES								ULTRASOUND EPDs			INDEXES				
	BW	WW	YW	SCROTAL AS OF 1/25/24	REA	%IMF	RIB FAT	RUMP FAT		CE	BW	WW	YW	MILK	TM	MCE	SC	REA	%IMF	RIB FAT	\$T	\$M	
RATIO	99.1	111			109	73.3	133.3	67.6															
CONTEMP	8	8	7		3	6	2	6	EPD	3.1	1.2	38	60	7	26.0	2.83	0.44	0.21	-0.2	-0.031	102.77	20.48	
ADJ. TRAIT	81	766	1065	42	11.56	1.29	0.28	0.23	ACC	0.32	0.54	0.52	0.45	0.19	--	0.18	0.33	0	0	0	--	--	

49

**H BAR 2050**

REG#: C1164958 DNA: DNA 62521017941 SV  
BRAND: H-2050 DOB: 2/27/22

**H-BAR BEEFMASTERS  
RED | SCURS**



COLLIER FARMS CF 120/4  
CFR 967/7

COLLIER FARMS CF 566/3

\*\* VISION 905

SEVEN-C ANDERSON 536/15

COLLIER FARMS CF 508/1

\*\* CF SUGAR BRITCHES 040  
DIAMOND MAIDEN 1931/4

\*\* TABASCO 3018K10  
\*\* BETTY'S LAST 45/1  
\*\* LOGAN 62M27  
\*\* PENELOPE 293J11

TIGER J 918/7  
\* SPARTINS LADY GRACE 73/08

- Legendary cow families stack pedigree with Oasis, Diamond Maiden, Penelope
- Scurred bull with great cut and muscle; solid carcass traits to enhance looks
- Great EPD profile with Top 25% WW, YW Top 30% \$T and \$M indexes

**PERFORMANCE TEST & GRADING SCORES**

Beginning WDA Ratio	111.68	Visual Grading Ratio	102.74
Gain Test ADG Ratio	119.77	TOTAL Ratio Score	104.82
Ultrasound Scan Ratio	97.58		

**INDIVIDUAL PERFORMANCE RECORDS**

	BW	WW	YW	SCROTAL AS OF 1/25/24	REA	%IMF	RIB FAT	RUMP FAT
RATIO	98.8	105	105.4		107.5	87.4	72.2	90.9
CONTEMP	2	2	2		1	2	2	2
ADJ. TRAIT	80	663	877	44	10.38	2.63	0.13	0.2

**EXPECTED PROGENY DIFFERENCES**

**ULTRASOUND EPDs**

**INDEXES**

	CE	BW	WW	YW	MILK	TM	MCE	SC	REA	%IMF	RIB FAT	\$T	\$M
EPD	2.38	1.6	32	52	11	26.6	2.86	0.55	0.34	-0.12	-0.047	90.31	20.66
ACC	0.15	0.45	0.42	0.32	0.16	--	0.04	0.17	0	0	0	--	--

50

**CF 820/2**

REG#: C1174366 DNA: DNA 21121059131 PV  
BRAND: CF 820/2 DOB: 2/6/22

**COLLIER FARMS  
RED | HORNED**



CF RIPTIDE 875/3

CF GULF STREAM 273/7

\*\* THE PICTURE COW 463/3

LOGAN XL 2019

\* CF SIMPLY SUPERIOR 880/5

CJ SUPERIOR DREAM 1117

\*\* TABASCO 3018K10  
\* CF RAQUEL 933/9

SEVEN-C ANDERSON 007  
\*\* MARY KAY 765/7  
\*\* LOGAN 62M27  
BEEFOR 35/3

CF DREAM CATCHER 914  
\* MISS SUPERIOR 8

- Full brother to lot 3 bull adding to the consistency and genetic production
- Impeccable pedigree with the performance needed to excel in WDA and ADG
- Great EPD's with Top 15% WW, YW, Milk; Top 20% \$T; Top 30% \$M

**PERFORMANCE TEST & GRADING SCORES**

Beginning WDA Ratio	117.80	Visual Grading Ratio	102.00
Gain Test ADG Ratio	119.77	TOTAL Ratio Score	104.78
Ultrasound Scan Ratio	96.20		

**INDIVIDUAL PERFORMANCE RECORDS**

	BW	WW	YW	SCROTAL AS OF 1/25/24	REA	%IMF	RIB FAT	RUMP FAT
RATIO	94.4	85	100		100	100	100	100
CONTEMP	8	8	1		1	1	1	1
ADJ. TRAIT	85	585	933	46	11.43	1.59	0.21	-0.48

**EXPECTED PROGENY DIFFERENCES**

**ULTRASOUND EPDs**

**INDEXES**

	CE	BW	WW	YW	MILK	TM	MCE	SC	REA	%IMF	RIB FAT	\$T	\$M
EPD	2.02	1.1	36	61	11	29.2	2.83	0.51	0.32	-0.09	-0.019	104.82	21.69
ACC	0.32	0.54	0.54	0.47	0.18	--	0.18	0.34	0.43	0.46	0.41	--	--

51

**GMR SPARKS FLY 820**

REG#: C1170883 DNA: DNA NE01800357 PV  
BRAND: GMR 820 DOB: 2/24/22

**GOLDEN MEADOWS RANCH LLC  
RED | HORNED**



CF BROCK 450/3

CF BRAVADO 373/5

\*\* BETTY'S LAST 45/1

WB SOLUTION 67/6

SEVEN-C ANDERSON 947/9

COLLIER FARMS 711/1

\*\* VISION 905  
RED ESSENCE 129/07

BRYAN RANCH 126/6  
DIAMOND W 34/3  
CF DREAM CATCHER 914  
\*\* LOGAN'S BENGAL BABY 134/0

\*\* FUSION 578/3  
COLLIER FARMS 479/9

- Moderation, thickness, rib shape and style are bred in from Bravado and Solution
- Outstanding cow family lines of Betty's Last, Logan's Bengal Baby and 711 cow
- Strong WW ratio and EPD combined with a Top 20% \$M index and great test ratios

**PERFORMANCE TEST & GRADING SCORES**

Beginning WDA Ratio	112.37	Visual Grading Ratio	104.46
Gain Test ADG Ratio	116.95	TOTAL Ratio Score	104.75
Ultrasound Scan Ratio	86.91		

**INDIVIDUAL PERFORMANCE RECORDS**

	BW	WW	YW	SCROTAL AS OF 1/25/24	REA	%IMF	RIB FAT	RUMP FAT
RATIO	103.2	113	106		104.6	118.8	114.3	115
CONTEMP	14	4	2		1	1	1	1
ADJ. TRAIT	71	649	923	50	10.99	1.01	0.08	0.23

**EXPECTED PROGENY DIFFERENCES**

**ULTRASOUND EPDs**

**INDEXES**

	CE	BW	WW	YW	MILK	TM	MCE	SC	REA	%IMF	RIB FAT	\$T	\$M
EPD	3.75	0.2	32	43	7	22.6	2.97	0.58	-0.11	-0.08	-0.042	74.12	24.5
ACC	0.33	0.53	0.53	0.46	0.15	--	0.17	0.34	0	0	0	--	--



52

**SWB 08822**

REG#: C1153755 DNA: DNA NE02901588 PV  
BRAND: SWB 8822 DOB: 5/2/22

**BOUNDS SWINGING B RANCH**

RED | HORNE



MCALESTER 4521  
**SWB PETERBILT 08718**

GYPSY LADY 33

ACE OF SPADES 64/2

T5 838-7

BLACK LABEL 928

J & K 1001  
KENT MINDEMANN 95

CF DREAM CATCHER 914  
CAINS MS CASEY 4-35 938X  
HERITAGE 643  
TFS ACE HIGH 4/410

\* ACE IN THE HOLE 70/3  
MISS TIGER CAT 15/5

- Undeniable volume and capacity in this soggy made big boned bull with great top
- Monster carcass data with a big REA ratio of 111 EPD in Top 35, and IMF over 3.4%
- Moderate BW with Top 10% WW, Milk and \$T index, Top 25% \$M maternal index

**PERFORMANCE TEST & GRADING SCORES**

Beginning WDA Ratio	103.37	Visual Grading Ratio	102.25
Gain Test ADG Ratio	114.94	<b>TOTAL Ratio Score</b>	<b>104.74</b>
Ultrasound Scan Ratio	113.30		

**INDIVIDUAL PERFORMANCE RECORDS**

	BW	WW	YW	SCROTAL AS OF 1/25/24	REA	%IMF	RIB FAT	RUMP FAT
RATIO	92.4	103	101		111.5	94.5	96.7	107.8
CONTEMP	11	18	5		2	11	10	4
ADJ. TRAIT	72	599	1081	49	13.4	3.41	0.29	0.55

**EXPECTED PROGENY DIFFERENCES**

**ULTRASOUND EPDs**

**INDEXES**

	CE	BW	WW	YW	MILK	TM	MCE	SC	REA	%IMF	RIB FAT	\$T	\$M
EPD	2.37	1.2	38	67	12	31.0	2.64	0.89	0.82	-0.07	-0.038	115.57	22.54
ACC	0.32	0.52	0.5	0.5	0.14	--	0.17	0.31	0.51	0.57	0.49	--	--

53

**CR RAN 206**

REG#: C1177782 DNA:  
BRAND: C-C 206 DOB: 2/24/22

**COLLIER FARMS**

RED | HORNE



NEW DIMENSION 805

**CF TROUBADOR 879/3**

\* CF RAQUEL 933/9

\*\* FUSION 578/3

**DENIM'S WRANGLER 324/0**

\* DENIM PHANTOM 398

V - SEVEN 501  
V - SEVEN 1673

\*\* LOGAN 62M27  
JUNGLE WHISPER 49/1  
\*\* TABASCO 3018K10  
\*\* PHANTOM'S DIAMOND 119/9

MAC LAUGHLIN 48/5  
A W 25/6

- Dark red bull with lots of depth of body, bone and good hip, gentle disposition
- High test ratios with a 125 WDA and 113 ADG represented in the strong WW, YW
- Nice WW EPD in Top 30% and \$M index in Top 20% from Denim Wrangler

**PERFORMANCE TEST & GRADING SCORES**

Beginning WDA Ratio	125.24	Visual Grading Ratio	102.99
Gain Test ADG Ratio	113.18	<b>TOTAL Ratio Score</b>	<b>104.69</b>
Ultrasound Scan Ratio	87.56		

**INDIVIDUAL PERFORMANCE RECORDS**

	BW	WW	YW	SCROTAL AS OF 1/25/24	REA	%IMF	RIB FAT	RUMP FAT
RATIO	100	100	100					
CONTEMP	1	1	1					
ADJ. TRAIT	65	698	1039	46				

**EXPECTED PROGENY DIFFERENCES**

**ULTRASOUND EPDs**

**INDEXES**

	CE	BW	WW	YW	MILK	TM	MCE	SC	REA	%IMF	RIB FAT	\$T	\$M
EPD	4.32	0.2	30	44	8	23.4	3.84	0.67	0.23	0.06	-0.032	77.59	23.68
ACC	0	0	0	0	0	--	0	0	0	0	0	--	--

54

**RW 251**

REG#: C1163899 DNA:  
BRAND: RW 251 DOB: 3/23/22

**WALKER**

RED | POLLED



COLLIER FARMS CF 410/0

**COLLIER FARMS CF 614/8**

COLLIER FARMS CF 438/3

RILEY 148/1

**WALKER RW 858**

WALKER RW 610

\*\* LOGAN 62M27  
PERFECT NIRVANA 005

SLICK 16  
BRADLEY'S CIRCLE J 63/0  
\*\* FUSION 578/3  
\* CF RAQUEL 933/9

WALKER RED 502  
WALKER 226

- Extremely deep made POLLED bull with lots of look and structural soundness
- Easy calving and BW bull with outstanding milk traits coming from Riley
- Stacked pedigree with Logan, Perfect Nirvana, Slick 16, Raquel and Fusion

**PERFORMANCE TEST & GRADING SCORES**

Beginning WDA Ratio	113.09	Visual Grading Ratio	102.99
Gain Test ADG Ratio	118.83	<b>TOTAL Ratio Score</b>	<b>104.67</b>
Ultrasound Scan Ratio	93.82		

**INDIVIDUAL PERFORMANCE RECORDS**

	BW	WW	YW	SCROTAL AS OF 1/25/24	REA	%IMF	RIB FAT	RUMP FAT
RATIO					97.7	81.5	75	148.4
CONTEMP					3	4	4	2
ADJ. TRAIT				42	10.57	2.07	0.15	0.46

**EXPECTED PROGENY DIFFERENCES**

**ULTRASOUND EPDs**

**INDEXES**

	CE	BW	WW	YW	MILK	TM	MCE	SC	REA	%IMF	RIB FAT	\$T	\$M
EPD	3.72	0.3	20	32	10	20.1	3.01	0.27	-0.27	-0.04	-0.029	55.11	17.55
ACC	0.06	0.22	0	0	0	--	0.02	0	0	0	0	--	--

55

**CF 866/2**

REG#: C1165046 DNA: DNA 21121059175 SV  
BRAND: CF 866/2 DOB: 2/6/22

**COLLIER FARMS**  
RED MOT UL | HORNED



\*\* FUSION 578/3

\*\* TABASCO 3018K10

- Double bred Fusion bull with chart topping milk EPD at 1% and great cow family
- Impressive carcass scan results with a nice REA and huge IMF, IMF EPD Top 5%
- Low birth weight and Calving Ease deluxe in an attractive package, versatile

**COLLIER FARMS CF 496/8**

CF CRIMSON LEGACY 701/3

\*\* PHANTOM'S DIAMOND 119/9

COLLIER FARMS CF 341/0  
TRIPLE P P14/3  
H R C 5M  
BRYAN RANCH 111/4

BRYAN RANCH 62/9

**CEDAR CREEK CCR 553**

CF MISS CHROME 1541

\*\* FUSION 578/3  
TRIPLE P P12/04

**PERFORMANCE TEST & GRADING SCORES**

Beginning WDA Ratio	123.53	Visual Grading Ratio	99.79
Gain Test ADG Ratio	117.89	TOTAL Ratio Score	104.52
Ultrasound Scan Ratio	105.25		

**INDIVIDUAL PERFORMANCE RECORDS**

	BW	WW	YW	SCROTAL AS OF 1/25/24	REA	%IMF	RIB FAT	RUMP FAT
RATIO	103.8	99	105.6		101.6	136.2	120.8	102.9
CONTEMP	16	16	10		6	1	2	3
ADJ. TRAIT	71	622	1022	45	11.49	3.16	0.29	0.35

**EXPECTED PROGENY DIFFERENCES**

**ULTRASOUND EPDs**

**INDEXES**

	CE	BW	WW	YW	MILK	TM	MCE	SC	REA	%IMF	RIB FAT	\$T	\$M
EPD	5.21	-0.8	16	35	14	21.5	2.62	0.02	-0.12	0.23	-0.026	64.04	13.08
ACC	0.32	0.47	0.46	0.37	0.14	--	0.17	0.3	0	0	0	--	--

56

**SWB 08222**

REG#: C1153749 DNA: DNA NE02901415 PV  
BRAND: SWB 8222 DOB: 3/31/22

**BOUNDS SWINGING B RANCH**  
RED | HORNED



MCALESTER 4521

J & K 1001

- Absolute power house POLLED prospect with great looks and big carcass data
- Stout YW and beginning WDA ratio supported by big YW EPD in Top 10%
- Outstanding EPD profile: Top 10% YW, IMF, \$T; Top 20% WW, Top 2% REA

**SWB PETERBILT 08718**

GYPSY LADY 33

KENT MINDEMANN 95

CF DREAM CATCHER 914  
CAINS MS CASEY 4-35 938X

EMS CAPTAIN BRITCHES 1103

\*\* CF SUGAR BRITCHES 040  
\*\* CLARK JONES 584

**CHRK ARIANA 357D**

CHANNAROCK CHRK 1880X

CHRK GENESIS 1500T  
SISTER GROVE 0821

**PERFORMANCE TEST & GRADING SCORES**

Beginning WDA Ratio	114.59	Visual Grading Ratio	104.71
Gain Test ADG Ratio	82.52	TOTAL Ratio Score	104.46
Ultrasound Scan Ratio	114.51		

**INDIVIDUAL PERFORMANCE RECORDS**

	BW	WW	YW	SCROTAL AS OF 1/25/24	REA	%IMF	RIB FAT	RUMP FAT
RATIO	99.7	110			113.8	95.6	96.7	70.6
CONTEMP	17	18	1		1	10	8	13
ADJ. TRAIT	69	641	1073	44	13.68	3.45	0.29	0.36

**EXPECTED PROGENY DIFFERENCES**

**ULTRASOUND EPDs**

**INDEXES**

	CE	BW	WW	YW	MILK	TM	MCE	SC	REA	%IMF	RIB FAT	\$T	\$M
EPD	2.9	0.6	36	68	13	31.6	2.58	0.89	0.89	0.17	-0.025	120.39	21.25
ACC	0.32	0.53	0.51	0.51	0.17	--	0.18	0.31	0.51	0.57	0.49	--	--

57

**PV 018/2**

REG#: P315592 DNA:  
BRAND: PV 020/2 DOB: 2/10/22

**PRO VENTURES LLC**  
RED | HORNED



CF BROCK 450/3

\*\* VISION 905

- Extremely attractive made bull with great color, bone, capacity and muscling
- Super low birth weight and calving ease specialist perfect for virgin heifers
- CED EPD in Top 4%, BW in Top 10%, \$M in Top 35% and huge ADG ratio of 121

**CF BRAVADO 373/5**

\*\* BETTY'S LAST 45/1

RED ESSENCE 129/07

BRYAN RANCH 126/6  
DIAMOND W 34/3

T5 768-6

TIGER BRITCHES 1306  
HARROD FARMS PW/045

**MUNDINE SPRINGS 12719**

PSENCIK 550

LEVERAGE LEGACY 442  
TASK FORCE LATTE GIRL 99/2

**PERFORMANCE TEST & GRADING SCORES**

Beginning WDA Ratio	113.13	Visual Grading Ratio	102.25
Gain Test ADG Ratio	121.66	TOTAL Ratio Score	104.39
Ultrasound Scan Ratio	93.38		

**INDIVIDUAL PERFORMANCE RECORDS**

	BW	WW	YW	SCROTAL AS OF 1/25/24	REA	%IMF	RIB FAT	RUMP FAT
RATIO	109.2	96	106.3		104.1	114	125	104.8
CONTEMP	4	3	2		1	1	1	1
ADJ. TRAIT	60	552	912	48	11.31	1.71	0.15	0.22

**EXPECTED PROGENY DIFFERENCES**

**ULTRASOUND EPDs**

**INDEXES**

	CE	BW	WW	YW	MILK	TM	MCE	SC	REA	%IMF	RIB FAT	\$T	\$M
EPD	6	-1	20	33	6	16.1	3.07	0.28	-0.1	-0.09	-0.044	57.55	14.76
ACC	0.16	0.44	0.43	0.35	0.1	--	0.03	0.2	0	0	0	--	--



58

**SWB 12922**

REG#: C1163315 DNA: DNA NE02965160 PV  
BRAND: SWB 12922 DOB: 2/22/22

**BOUNDS SWINGING B RANCH**

RED | HORNE



J & K 1001  
**MCALESTER 4521**  
KENT MINDEMANN 95  
POLLED TIGER 801/2  
**TT AMBROSIA 1**  
CF SMARTY PANTS 715

SIMON CREEK 5/34  
SIMON CREEK 317  
  
LASATER BEEFMASTER 3265  
KENT MINDEMANN 546  
POLLED FUSION 999/7  
COLLIER FARMS 493/9  
  
\*\* INFINITY 120/96  
\*\* OASIS 655

- Impact growth bull with the big WW and YW EPD in Top 10% and \$T in Top 10%
- McAlester sons are producing fleshing ease and REA, REA EPD in Top 10%
- Strong IMF and Scrotal measures with a Top 15% \$M index and Oasis on bottom

PERFORMANCE TEST & GRADING SCORES			
Beginning WDA Ratio	100.20	Visual Grading Ratio	95.86
Gain Test ADG Ratio	157.20	TOTAL Ratio Score	104.23
Ultrasound Scan Ratio	113.88		

INDIVIDUAL PERFORMANCE RECORDS									EXPECTED PROGENY DIFFERENCES								ULTRASOUND EPDs			INDEXES			
	BW	WW	YW	SCROTAL AS OF 1/25/24	REA	%IMF	RIB FAT	RUMP FAT		CE	BW	WW	YW	MILK	TM	MCE	SC	REA	%IMF	RIB FAT	\$T	\$M	
RATIO	99.5	100	100		104.1	102.5	84.6	63.3															
CONTEMP	30	18	3		5	6	7	9	EPD	2.26	1.5	43	67	9	30.5	3.76	1.16	0.67	0.01	-0.04	118	26.38	
ADJ. TRAIT	72	531	1017	48	12.9	3.69	0.22	0.31	ACC	0.32	0.56	0.54	0.52	0.24	--	0.18	0.39	0.53	0.59	0.52	--	--	

59

**CF 987/2**

REG#: C1165349 DNA: DNA 62521017859 DV  
BRAND: CF 987/2 DOB: 3/2/22

**COLLIER FARMS**

RED | HORNE



CF CACTUS JACK 165/3  
**COLLIER FARMS CF 722/8**  
COLLIER FARMS 264/8  
  
\*\* LOGAN 62M27  
**COLLIER FARMS CF 549/3**  
\*\* PETUNIA 293J12

NEW DIMENSION 805  
\*\* MISS PEPPER JACK 74/5  
  
\*\* LOGAN 62M27  
\*\* LADY LEGACY 338/12  
QUASAR 991  
JEZABELLE 62J8  
  
\*\* PAINTED TIGER 3-390  
\*\* LADY VICTORIA 236

- Super soggy made bull with extra depth coming from 722 and Cactus Jack on top
- High WDA ratio of 124 and big REA ratio of 114 measuring over 13"
- Petunia and Lady Legacy cow families were legends at Collier Farms

PERFORMANCE TEST & GRADING SCORES			
Beginning WDA Ratio	124.90	Visual Grading Ratio	100.53
Gain Test ADG Ratio	110.36	TOTAL Ratio Score	104.21
Ultrasound Scan Ratio	103.11		

INDIVIDUAL PERFORMANCE RECORDS									EXPECTED PROGENY DIFFERENCES								ULTRASOUND EPDs			INDEXES			
	BW	WW	YW	SCROTAL AS OF 1/25/24	REA	%IMF	RIB FAT	RUMP FAT		CE	BW	WW	YW	MILK	TM	MCE	SC	REA	%IMF	RIB FAT	\$T	\$M	
RATIO	91.2	108	96.7		114.6	98.2	120	93.1															
CONTEMP	11	11	10		2	6	5	6	EPD	1.47	1.8	25	41	10	22.6	2.72	0.16	0.03	-0.08	-0.026	69.95	16.65	
ADJ. TRAIT	85	589	961	36	13.33	2.13	0.24	0.27	ACC	0.32	0.5	0.49	0.41	0.2	--	0.18	0.35	0	0	0	--	--	

60

**DK 5 B 14/22**

REG#: C1167504 DNA:  
BRAND: DK5 14/22 DOB: 1/17/22

**DK 5 BAR RANCH**

RED | HORNE



EL PATRON 686/3  
**COLLIER FARMS CF 964/7**  
FOREVER SASSY 292/2  
  
\*\* LOGAN 62M27  
**TR MISS MIRACLE 203/15**  
BABY GIRL II 90

\*\* LOGAN 62M27  
HARMONY 62K11  
  
LOGAN XL 2019  
\* CF SASSY 8993  
QUASAR 991  
JEZABELLE 62J8  
  
\*\* SPARTACUS 86/653  
BABY GIRL 804

- Moderate and square made with perfect hip design and big rib shape and muscle
- Calving ease bull with Top 15% CED and Top 25% BW EPD for versatility
- Great individual WW and YW, big test ratios of 113 and 117 and \$M in Top 30%

PERFORMANCE TEST & GRADING SCORES			
Beginning WDA Ratio	113.31	Visual Grading Ratio	102.49
Gain Test ADG Ratio	117.89	TOTAL Ratio Score	104.09
Ultrasound Scan Ratio	92.20		

INDIVIDUAL PERFORMANCE RECORDS									EXPECTED PROGENY DIFFERENCES								ULTRASOUND EPDs			INDEXES			
	BW	WW	YW	SCROTAL AS OF 1/25/24	REA	%IMF	RIB FAT	RUMP FAT		CE	BW	WW	YW	MILK	TM	MCE	SC	REA	%IMF	RIB FAT	\$T	\$M	
RATIO	101.6	100			98.7	95.4	50	113.8															
CONTEMP	4	4	3		2	3	3	2	EPD	4.12	0.4	22	23	6	16.9	2.79	0.64	-0.27	-0.05	-0.049	40.8	23.24	
ADJ. TRAIT	78	623	856	46	10.55	1.87	0.08	0.33	ACC	0.15	0.42	0.41	0.33	0.14	--	0.04	0.23	0	0	0	--	--	

61

**GMR MR YAEGER 837**

REG#: C1170878 DNA: DNA NE02971853 SV  
BRAND: GMR 837 DOB: 4/1/22

**GOLDEN MEADOWS RANCH LLC**

RED MOT UL | HORNED



\*\* CF SUGAR BRITCHES 040

\*\* L2 CAPTAIN SUGAR 12/02

• Dark red color and perfect top line with overall attractive pattern and bone

CF CORTEZ 374/5

\*\* OASIS 655

• Strong WW gain ratio of 108 and WDA ratio of 115 showing quick growth

\*\* LOGAN'S BENGAL BABY 134/0

\*\* LOGAN 62M27

• Nice maternal genetics with Logan's Bengal Baby and Vision, \$M in Top 40%

CF POLARIS 674/6

\*\* BENGAL BABY 93/05

GMR GINGER SNAP 478

\*\* VISION 905

SKORUPPA 21/6

L TWO RANCH 24/07

VFF KING SUGAR 98/3

SUGAR PIE 11/4

PERFORMANCE TEST & GRADING SCORES

Beginning WDA Ratio	115.32	Visual Grading Ratio	104.71
Gain Test ADG Ratio	109.42	TOTAL Ratio Score	103.89
Ultrasound Scan Ratio	81.24		

INDIVIDUAL PERFORMANCE RECORDS

	BW	WW	YW	SCROTAL AS OF 1/25/24	REA	%IMF	RIB FAT	RUMP FAT
RATIO	94	108	94		95.3	80	85.7	80
CONTEMP	14	4	2		2	2	2	2
ADJ. TRAIT	78	620	819	34	10.02	0.68	0.06	0.16

EXPECTED PROGENY DIFFERENCES

ULTRASOUND EPDs

INDEXES

	CE	BW	WW	YW	MILK	TM	MCE	SC	REA	%IMF	RIB FAT	\$T	\$M
EPD	2.03	1.4	26	40	9	21.6	2.29	0.43	-0.15	-0.13	-0.018	66.93	18
ACC	0.32	0.52	0.5	0.42	0.17	--	0.18	0.3	0	0	0	--	--

62

**CF 824/2**

REG#: C1165025 DNA: DNA 21121059135 SV  
BRAND: CF 824/2 DOB: 1/30/22

**COLLIER FARMS**

RED | HORNED



\* EMS RING OF FIRE 130

BONFIRE 8038

• Super clean underline with massive middle and easy fleshing

MR CJ 13/16

EMS COLOR ME SUGAR 811

• Great performance data with BW, WW, YW ratios over 100 and big EPDs

CJ'S DIAMOND REFLECTION 1203

CF DREAM CATCHER 914

• Top 10% Milk EPD with Top 30% WW, YW for a great \$T and \$M in the Top 20%

COLLIER FARMS CF 422/2

\* CJ'S DIAMOND OF SOUL 509

COLLIER FARMS CF 281/5

FUSED SILK 998/7

COLLIER FARMS CF 605/3

COLLIER FARMS CF 130/0

DC DEALER 006

SOUTHERN MISS J 0586

PERFORMANCE TEST & GRADING SCORES

Beginning WDA Ratio	123.31	Visual Grading Ratio	99.55
Gain Test ADG Ratio	117.89	TOTAL Ratio Score	103.87
Ultrasound Scan Ratio	100.73		

INDIVIDUAL PERFORMANCE RECORDS

	BW	WW	YW	SCROTAL AS OF 1/25/24	REA	%IMF	RIB FAT	RUMP FAT
RATIO	106.8	107	104.2		107.6	99.1	104.2	85.3
CONTEMP	16	16	10		2	4	4	8
ADJ. TRAIT	69	674	1009	43	12.17	2.3	0.25	0.29

EXPECTED PROGENY DIFFERENCES

ULTRASOUND EPDs

INDEXES

	CE	BW	WW	YW	MILK	TM	MCE	SC	REA	%IMF	RIB FAT	\$T	\$M
EPD	3.15	0.8	31	50	12	27.5	2.51	0.47	-0.04	-0.04	-0.041	86.4	23.19
ACC	0.32	0.51	0.49	0.41	0.18	--	0.18	0.3	0	0	0	--	--

63

**CF 891/2**

REG#: C1165064 DNA: DNA 62521017213 PV  
BRAND: CF 891/2 DOB: 2/5/22

**COLLIER FARMS**

RED | HORNED



CF RUSTON 871/3

\*\* TABASCO 3018K10

• The perfect low birthweight, heifer friendly bull with lots of style and genetics

COLLIER FARMS CF 172/9

\* CF RAQUEL 933/9

• Ruston back on a Bravado daughter with First Lady, Jazzie and Oasis cow families

FIRST LADY 27-10

BULLET PROOF 864

• Big REA measure of 12.56 and ratio of 110; \$M index in Top 30%

CF BRAVADO 373/5

JAZZIE 293L55

COLLIER FARMS CF 710/0

CF BROCK 450/3

COLLIER FARMS CF 433/6

\*\* BETTY'S LAST 45/1

\*\* FUSION 578/3

V - SEVEN 1950/4

PERFORMANCE TEST & GRADING SCORES

Beginning WDA Ratio	116.86	Visual Grading Ratio	98.56
Gain Test ADG Ratio	129.19	TOTAL Ratio Score	103.81
Ultrasound Scan Ratio	102.13		

INDIVIDUAL PERFORMANCE RECORDS

	BW	WW	YW	SCROTAL AS OF 1/25/24	REA	%IMF	RIB FAT	RUMP FAT
RATIO	94.4	98	96		110.6	90.3	128.6	131.8
CONTEMP	6	6	6		1	2	1	1
ADJ. TRAIT	75	627	943	41	12.56	2.32	0.18	0.29

EXPECTED PROGENY DIFFERENCES

ULTRASOUND EPDs

INDEXES

	CE	BW	WW	YW	MILK	TM	MCE	SC	REA	%IMF	RIB FAT	\$T	\$M
EPD	4.56	-0.3	23	29	8	19.0	3.33	0.16	0	-0.05	-0.039	50.82	21.5
ACC	0.32	0.47	0.46	0.37	0.13	--	0.17	0.28	0	0	0	--	--



64

**CAMPEC 37/2**

REG#: C1164396 DNA:  
BRAND: Camp 37/2 DOB: 4/13/22

**CAMPECHE CATTLE**  
RED | DE-HORNED



\*\* VISION 905  
**COLLIER FARMS CF 511/6**  
COLLIER FARMS 725/9  
  
FRENZEL 4611  
**SPEAR RANCHES 753**  
SPEAR RANCHES 045

\*\* LOGAN 62M27  
\*\* PENELOPE 293J11  
  
\*\* L2 CAPTAIN SUGAR 12/02  
\*\* KING'S LADY 764/7  
J & K 1001  
FRENZEL 0309  
  
FOUNDATION BEEFMASTERS 5222  
SPEAR RANCHES 7127

- Deep and smooth made 511 son going back to Spear and Frenzel cow herds
- Big time IMF ratio of 134 and actual measure of 3.4%, IMF EPD in Top 5%
- Jezabelle, Sugar Ann, Penelope and King's Lady stack up the bottom side maternal

PERFORMANCE TEST & GRADING SCORES			
Beginning WDA Ratio	108.95	Visual Grading Ratio	101.51
Gain Test ADG Ratio	115.07	TOTAL Ratio Score	103.57
Ultrasound Scan Ratio	101.10		

INDIVIDUAL PERFORMANCE RECORDS									EXPECTED PROGENY DIFFERENCES								ULTRASOUND EPDs			INDEXES			
	BW	WW	YW	SCROTAL AS OF 1/25/24	REA	%IMF	RIB FAT	RUMP FAT		CE	BW	WW	YW	MILK	TM	MCE	SC	REA	%IMF	RIB FAT	\$T	\$M	
RATIO	97.1	101			99.6	134.3	85.7	117.6															
CONTEMP	3	2	1		2	1	3	1	EPD	3.8	0	23	39	9	20.2	3.39	0.31	0.26	0.2	-0.036	71.82	16.14	
ADJ. TRAIT	70	592	806	36	9.58	3.41	0.12	0.2	ACC	0.15	0.41	0	0	0	--	0.04	0	0	0	0	--	--	

65

**SWB 12822**

REG#: C1163313 DNA: DNA NE02965056 PV  
BRAND: SWB 12822 DOB: 2/21/22

**BOUNDS SWINGING B RANCH**  
RED | HORNED



J & K 1001  
**SUMMIT 5306**  
M & M CATTLE 0714  
  
LYSSY'S PINNACLE 92/465  
**CHRK WILDFLOWER 1874F**  
CHANNAROCK CHRK 1874X

SIMON CREEK 5/34  
SIMON CREEK 317  
  
L BAR 5549  
L BAR 9203  
\*\* MAVERICK 17/557  
\* OASIS II - CLONE 969  
  
CHRK GENESIS 1500T  
CHANNAROCK FARM 720/0

- Dark red bull with lots of length and depth and easy fleshing; Big ADG test ratio of 125
- Summit and JK 1001 deliver big time REA and IMF measures and EPD's
- Low BW and Calving Ease with Top 25%WW Top 30% YW and \$T and Top 15% \$M

PERFORMANCE TEST & GRADING SCORES			
Beginning WDA Ratio	103.30	Visual Grading Ratio	98.56
Gain Test ADG Ratio	125.76	TOTAL Ratio Score	103.57
Ultrasound Scan Ratio	116.66		

INDIVIDUAL PERFORMANCE RECORDS									EXPECTED PROGENY DIFFERENCES								ULTRASOUND EPDs			INDEXES		
	BW	WW	YW	SCROTAL AS OF 1/25/24	REA	%IMF	RIB FAT	RUMP FAT		CE	BW	WW	YW	MILK	TM	MCE	SC	REA	%IMF	RIB FAT	\$T	\$M
RATIO	103.9	98	106		109	105.6	196.2	177.6														
CONTEMP	30	18	3		3	4	1	1	EPD	5.2	-0.7	33	49	9	25.7	3.74	0.86	0.57	0.22	0.002	88.22	26.21
ADJ. TRAIT	69	524	1079	45	13.5	3.8	0.51	0.87	ACC	0.32	0.55	0.54	0.52	0.24	--	0.19	0.4	0.54	0.59	0.52	--	--

66

**CF 789/2**

REG#: C1165010 DNA: DNA 62521017639 SV  
BRAND: CF 789/2 DOB: 3/14/22

**COLLIER FARMS**  
RED | HORNED



CF BROCK 450/3  
**CF BRAVADO 373/5**  
\*\* BETTY'S LAST 45/1  
  
\*\* TABASCO 3018K10  
**COLLIER FARMS CF 100/5**  
\* CF RAQUEL 933/9

\*\* VISION 905  
RED ESSENCE 129/07  
  
BRYAN RANCH 126/6  
DIAMOND W 34/3  
\*\* RED TIGER 9075  
JUNGLE SPICE 786  
  
\*\* LOGAN 62M27  
JUNGLE WHISPER 49/1

- Bravado on Riptide's sister produced this great looking, well made prospect
- Calving Ease specialist, with CED in Top 10% and BW in the Top 5%
- Strong test ratios with a 110 WDA and 115 ADG, IMF ratio of 117

PERFORMANCE TEST & GRADING SCORES			
Beginning WDA Ratio	110.15	Visual Grading Ratio	101.76
Gain Test ADG Ratio	115.07	TOTAL Ratio Score	103.45
Ultrasound Scan Ratio	96.98		

INDIVIDUAL PERFORMANCE RECORDS									EXPECTED PROGENY DIFFERENCES								ULTRASOUND EPDs			INDEXES		
	BW	WW	YW	SCROTAL AS OF 1/25/24	REA	%IMF	RIB FAT	RUMP FAT		CE	BW	WW	YW	MILK	TM	MCE	SC	REA	%IMF	RIB FAT	\$T	\$M
RATIO	97.3	96	93.5		99.1	117	91.7	125														
CONTEMP	3	3	3		2	2	2	1	EPD	5.97	-1.7	10	11	7	11.7	2.72	-0.02	-0.14	0.02	-0.053	21.42	15.64
ADJ. TRAIT	74	421	813	40	10.56	2.48	0.11	0.2	ACC	0.33	0.52	0.54	0.47	0.21	--	0.18	0.35	0	0	0	--	--

67

**CB ROC 23/22**

REG#: C1163384 DNA: DNA 101819051388 PV  
BRAND: CBR 23/22 DOB: 3/8/22

**CB ROCKEFELLER RANCH**

RED | HORNE



CF BROCK 450/3  
**CF POLLED PLAYBOY 155/9**  
FIRST LADY 27-10  
WB SOLUTION 67/6  
**COLLIER FARMS CF 9487**  
DIAMOND MAIDEN 1931/4

\*\* VISION 905  
RED ESSENCE 129/07  
BULLET PROOF 864  
JAZZIE 293L55  
CF DREAM CATCHER 914  
\*\* LOGAN'S BENGAL BABY 134/0  
\*\* CAVALIER 19/5  
L2 MAIDEN LADY 154/00

- Absolute head turner with super classy cut and style, top end conformation
- POLLED bull with moderate BW, strong WW and YW EPD's and Top 15% \$M
- Breed leading genetics with Polled Playboy on Solution and Diamond Maiden

PERFORMANCE TEST & GRADING SCORES			
Beginning WDA Ratio	116.62	Visual Grading Ratio	100.77
Gain Test ADG Ratio	114.12	TOTAL Ratio Score	103.44
Ultrasound Scan Ratio	98.28		

INDIVIDUAL PERFORMANCE RECORDS								
	BW	WW	YW	SCROTAL AS OF 1/25/24	REA	%IMF	RIB FAT	RUMP FAT
RATIO	101.8		100		100	100	100	100
CONTEMP	3		1		1	1	1	1
ADJ. TRAIT	76		922	41	11.33	2.33	0.26	0.37

EXPECTED PROGENY DIFFERENCES										ULTRASOUND EPDs			INDEXES	
	CE	BW	WW	YW	MILK	TM	MCE	SC	REA	%IMF	RIB FAT	\$T	\$M	
EPD	3.75	0.6	35	47	6	23.1	3.22	0.58	-0.22	-0.09	-0.039	80.73	25.23	
ACC	0.15	0.41	0.41	0.33	0.12	--	0.03	0.18	0	0	0	--	--	

68

**CF 996/2**

REG#: C1165353 DNA: DNA 62521017851 SV  
BRAND: CF 996/2 DOB: 2/13/22

**COLLIER FARMS**  
LIGHT RED | HORNE



CF RIPTIDE 875/3  
**CF SUPERIOR TIDE 822/8**  
CJ SUPERIOR DREAM 1117  
NEW DIMENSION 805  
**CF HEAVENLY DIMENSION 761/4**  
HS HEAVENLY HATTIE 62T14

\*\* TABASCO 3018K10  
CF RAQUEL 933/9  
CF DREAM CATCHER 914  
\* MISS SUPERIOR 8  
V - SEVEN 501  
V - SEVEN 1673  
\*\* BLACK JACK 21  
HARMONY 62K11

- A star-studded line up of the best and most famous pedigrees in the breed
- Strong test ratios, big YW over 1000 pounds and the WW & YW EPD's needed
- Top 10% WW and \$M EPD's with a Top 25% YW and Top 30% \$T

PERFORMANCE TEST & GRADING SCORES			
Beginning WDA Ratio	121.43	Visual Grading Ratio	101.76
Gain Test ADG Ratio	113.18	TOTAL Ratio Score	103.33
Ultrasound Scan Ratio	86.43		

INDIVIDUAL PERFORMANCE RECORDS								
	BW	WW	YW	SCROTAL AS OF 1/25/24	REA	%IMF	RIB FAT	RUMP FAT
RATIO	93.7	98	100.2		96.2	50	36.4	47.2
CONTEMP	14	14	14		9	13	13	13
ADJ. TRAIT	85	641	1018	43	10.84	1.01	0.08	0.17

EXPECTED PROGENY DIFFERENCES										ULTRASOUND EPDs			INDEXES	
	CE	BW	WW	YW	MILK	TM	MCE	SC	REA	%IMF	RIB FAT	\$T	\$M	
EPD	0.89	2.4	41	55	9	29.6	2.44	0.54	0.08	-0.43	-0.053	91.61	28.29	
ACC	0.32	0.51	0.5	0.43	0.2	--	0.18	0.32	0	0	0	--	--	

69

**SIDDONS 243**

REG#: C1161633 DNA:  
BRAND: Siddons 243 DOB: 4/7/22

**SIDDONS**  
RED | HORNE



NEW DIMENSION 805  
**CF GALVESTON 414/5**  
CF LOGAN'S LOVE 617/1  
EMMONS RANCH 677  
**SIDDONS 2910**  
COULTER K SEVEN 78

V - SEVEN 501  
V - SEVEN 1673  
\*\* LOGAN 62M27  
\*\* SEVEN-C ANDERSON 450  
CJ'S CEASAR 967  
EMS BODY BY SMOOTH 0-31  
COULTER K SEVEN 615

- Son of the great Galveston bull that was record high selling convention lot
- Strong test ratios for both WDA and ADG pushing the growth curve
- Low birth weight, big REA and great disposition for completeness

PERFORMANCE TEST & GRADING SCORES			
Beginning WDA Ratio	109.67	Visual Grading Ratio	101.51
Gain Test ADG Ratio	119.77	TOTAL Ratio Score	103.31
Ultrasound Scan Ratio	93.05		

INDIVIDUAL PERFORMANCE RECORDS								
	BW	WW	YW	SCROTAL AS OF 1/25/24	REA	%IMF	RIB FAT	RUMP FAT
RATIO	112.1	96	100		100	100	100	100
CONTEMP	21	16	1		1	1	1	1
ADJ. TRAIT	60	515	803	46	12.01	1.38	0.08	0.14

EXPECTED PROGENY DIFFERENCES										ULTRASOUND EPDs			INDEXES	
	CE	BW	WW	YW	MILK	TM	MCE	SC	REA	%IMF	RIB FAT	\$T	\$M	
EPD	3.95	0.2	18	35	7	16.3	3.01	0.3	0.13	-0.09	-0.041	60.91	9.67	
ACC	0.16	0.48	0.48	0.36	0.2	--	0.05	0.19	0	0	0	--	--	



70

**HTC 2103**

REG#: C1163967 DNA:  
BRAND: HTC 2103 DOB: 3/22/22

**H. T. CHAPMAN**  
RED | HORNED



COLLIER FARMS CF 120/4  
**COLLIER FARMS CF603/8**  
COLLIER FARMS CF 962/2  
COLLIER FARMS CF 869/3

\*\* CF SUGAR BRITCHES 040  
DIAMOND MAIDEN 1931/4

VISTA 908  
COLLIER FARMS 423/6  
VMAX 649/1  
H M S 1845/3

- Long bodied bull with extra rib shape and muscling
- Strong WW ratio of 113, WW EPD in the Top 25%, ADG test ratio of 122
- Strong EPD profile and indexes, Milk in Top 30%, \$M index in Top 20%

**\* HT CHAPMAN 739**

H. T. CHAPMAN 303/3

COLLIER FARMS 776/7  
HUGH T CHAPMAN 102/8

PERFORMANCE TEST & GRADING SCORES			
Beginning WDA Ratio	116.39	Visual Grading Ratio	100.77
Gain Test ADG Ratio	122.60	<b>TOTAL Ratio Score 103.11</b>	
Ultrasound Scan Ratio	86.72		

INDIVIDUAL PERFORMANCE RECORDS								EXPECTED PROGENY DIFFERENCES								ULTRASOUND EPDs			INDEXES				
	BW	WW	YW	SCROTAL AS OF 1/25/24	REA	%IMF	RIB FAT	RUMP FAT		CE	BW	WW	YW	MILK	TM	MCE	SC	REA	%IMF	RIB FAT	\$T	\$M	
RATIO	113	100.6			90.4	70.3	70	100															
CONTEMP	27	5			4	5	5	2	EPD	2.72	2	33	48	10	26.6	2.92	0.53	-0.29	-0.24	-0.048	80.55	23.5	
ADJ. TRAIT	656	912	36		9.93	1.42	0.14	0.29	ACC	0.05	0.22	0.44	0.32	0.13	--	0.02	0.2	0	0	0	--	--	

71

**GMR ATLAS**

REG#: C1176405 DNA: DNA NE02971704 PV  
BRAND: GMR 857 DOB: 4/18/22

**GOLDEN MEADOWS RANCH LLC**  
RED | HORNED



CF BROCK 450/3  
**CF BRAVADO 373/5**  
\*\* BETTY'S LAST 45/1  
CF RIPTIDE 875/3

\*\* VISION 905  
RED ESSENCE 129/07

BRYAN RANCH 126/6  
DIAMOND W 34/3  
\*\* TABASCO 3018K10  
\* CF RAQUEL 933/9

- Extreme stretch and body delivering big rib shape and clean lines
- Amazing pedigree with CF greats Bravado, Riptide, and Madam Secretary
- Low birth weight, strong WW, good REA and \$M index in Top 20%

**CF LADY SECRETARY 847/8**

\* JT MADAM SECRETARY 659

\*\* L2 CAPTAIN SUGAR 12/02  
\*\* OASIS 655

PERFORMANCE TEST & GRADING SCORES			
Beginning WDA Ratio	119.47	Visual Grading Ratio	101.51
Gain Test ADG Ratio	108.47	<b>TOTAL Ratio Score 103.09</b>	
Ultrasound Scan Ratio	92.40		

INDIVIDUAL PERFORMANCE RECORDS								EXPECTED PROGENY DIFFERENCES								ULTRASOUND EPDs			INDEXES				
	BW	WW	YW	SCROTAL AS OF 1/25/24	REA	%IMF	RIB FAT	RUMP FAT		CE	BW	WW	YW	MILK	TM	MCE	SC	REA	%IMF	RIB FAT	\$T	\$M	
RATIO	112	108	103.4		102.7	99.3	128.6	96.3															
CONTEMP	9	4	2		1	2	1	2	EPD	5.85	-1.4	27	34	4	17.9	2.86	0.39	-0.08	-0.15	-0.046	58.12	23.2	
ADJ. TRAIT	61	628	897	41	11.71	1.42	0.18	0.26	ACC	0.33	0.54	0.53	0.47	0.17	--	0.18	0.34	0	0	0	--	--	

72

**HTC 7/2**

REG#: C1160689 DNA:  
BRAND: HTC 7/2 DOB: 1/21/22

**H. T. CHAPMAN**  
RED | HORNED



\*\* FUSION 578/3  
**COLLIER FARMS CF 382/7**  
COLLIER FARMS CF 174/5  
COLLIER FARMS CF 995/5

\*\* TABASCO 3018K10  
\*\* PHANTOM'S DIAMOND 119/9

RED EAGLE 3289  
MOULTRIE MEADOWS M934  
\*\* LOGAN 62M27  
TIGER'S DESTINY 602

- Fusion on top of Red Eagle genetics are perfect for calving ease needs
- Nice WDA and ADG test ratios with a solid REA area over 11.6"
- Balanced, moderate and easy to use in a variety of ways for years of productivity

**H.T. CHAPMAN 025**

H. T. CHAPMAN 137/1

MARINER 98/1  
HUGH T. CHAPMAN 16/5

PERFORMANCE TEST & GRADING SCORES			
Beginning WDA Ratio	106.65	Visual Grading Ratio	99.30
Gain Test ADG Ratio	128.25	<b>TOTAL Ratio Score 103.07</b>	
Ultrasound Scan Ratio	100.75		

INDIVIDUAL PERFORMANCE RECORDS								EXPECTED PROGENY DIFFERENCES								ULTRASOUND EPDs			INDEXES				
	BW	WW	YW	SCROTAL AS OF 1/25/24	REA	%IMF	RIB FAT	RUMP FAT		CE	BW	WW	YW	MILK	TM	MCE	SC	REA	%IMF	RIB FAT	\$T	\$M	
RATIO	91				104.1	99.6	90.5	90															
CONTEMP	17	3			1	3	2	2	EPD	4.15	0.5	12	20	11	16.9	3.35	0.07	-0.18	0.03	-0.026	34.89	13.56	
ADJ. TRAIT	527	876	41		11.69	2.5	0.19	0.27	ACC	0.07	0.23	0.44	0.31	0.13	--	0.02	0.2	0	0	0	--	--	

73

**V7 207/22**

REG#: C1174141 DNA: DNA 9518022894 SV  
BRAND: V7 207/22 DOB: 2/27/22

**V - SEVEN**  
RED MOT UL | POLLED



NEW DIMENSION 805  
CF COWBOY COOL 872/3  
ENDLESS OASIS 179

V - SEVEN 501  
V - SEVEN 1834

COLLIER FARMS 37/1

V - SEVEN 501  
V - SEVEN 1673  
  
\*\* INFINITY 120/96  
\*\* OASIS 655  
CHANNAROCK 869/1  
SEVEN-C ANDERSON 925  
  
COLLIER FARMS 5/9  
COLLIER FARMS 172/8

- Smooth POLLED bull with extra length of body and great lines
- Calving Ease and LBW with Top 25% WW EPD and big YW for curve bending growth
- Fertility and hardiness runs deep in V-Seven cows; Top 10% \$M index

PERFORMANCE TEST & GRADING SCORES			
Beginning WDA Ratio	121.01	Visual Grading Ratio	98.81
Gain Test ADG Ratio	112.24	TOTAL Ratio Score	102.80
Ultrasound Scan Ratio	103.09		

INDIVIDUAL PERFORMANCE RECORDS									EXPECTED PROGENY DIFFERENCES								ULTRASOUND EPDs			INDEXES		
	BW	WW	YW	SCROTAL AS OF 1/25/24	REA	%IMF	RIB FAT	RUMP FAT		CE	BW	WW	YW	MILK	TM	MCE	SC	REA	%IMF	RIB FAT	\$T	\$M
RATIO	103.7	100	100		100	100	100	100	EPD	4.04	0.2	33	39	8	24.6	3.04	0.5	0.1	-0.2	-0.043	66.94	29.4
CONTEMP	14	1	1		1	1	1	1	ACC	0.32	0.55	0.55	0.49	0.23	--	0.18	0.37	0	0	0	--	--
ADJ. TRAIT	73	628	1001	40	11.86	2.73	0.2	0.2														

74

**CB ROC 29/22**

REG#: C1163387 DNA: DNA 102120010914 PV  
BRAND: CBR 29/22 DOB: 4/22/22

**CB ROCKEFELLER RANCH**  
RED | POLLED



CF BROCK 450/3  
CF POLLED PLAYBOY 155/9  
FIRST LADY 27-10

COLLIER FARMS CF 410/0  
COLLIER FARMS CF 312/9

COLLIER FARMS CF 610/3

\*\* VISION 905  
RED ESSENCE 129/07  
  
BULLET PROOF 864  
JAZZIE 293L55  
\*\* LOGAN 62M27  
PERFECT NIRVANA 005  
  
\*\* TABASCO 3018K10  
\*\* BETTY'S LAST 45/1

- Another outstanding POLLED Playboy son with the looks and bloodlines needed
- Impressive calving ease and BW EPD's coupled with strong test ratios
- Nice carcass measures boasting a 110 ratio on IMF and REA over 10"

PERFORMANCE TEST & GRADING SCORES			
Beginning WDA Ratio	121.86	Visual Grading Ratio	98.56
Gain Test ADG Ratio	117.89	TOTAL Ratio Score	102.79
Ultrasound Scan Ratio	98.21		

INDIVIDUAL PERFORMANCE RECORDS									EXPECTED PROGENY DIFFERENCES								ULTRASOUND EPDs			INDEXES		
	BW	WW	YW	SCROTAL AS OF 1/25/24	REA	%IMF	RIB FAT	RUMP FAT		CE	BW	WW	YW	MILK	TM	MCE	SC	REA	%IMF	RIB FAT	\$T	\$M
RATIO		98	103.8		94.9	110.8	108	133.3	EPD	5.31	-0.5	25	38	5	17.2	3.14	0.39	-0.35	-0.05	-0.036	66.42	16.23
CONTEMP		3	3		3	1	2	1	ACC	0.09	0.32	0.41	0.33	0.13	--	0.03	0.18	0	0	0	--	--
ADJ. TRAIT		567	964	46	10.75	2.56	0.27	0.48														

75

**RW 225**

REG#: C1158569 DNA:  
BRAND: RW 225 DOB: 2/28/22

**WALKER**  
RED | POLLED



\*\* FUSION 578/3  
CF BISMARCK 845/6  
COLLIER FARMS CF 273/4

WALKER2 61/12  
WALKER RW 921

WALKER 354

\*\* TABASCO 3018K10  
\*\* PHANTOM'S DIAMOND 119/9  
  
COLLIER FARMS CF 410/0  
SOUTHERN MISS J 0555  
L2 CAPTAIN JACK 43/07  
VICTORIAN SUGAR 53/08  
  
BLAU RANCH 592  
\*\* WALKER 432-

- Deep made, easy fleshing Bismarck son with POLLED genetics to add value
- Low birth weight and Calving Ease EPD's in the Top 10%
- Outstanding Milk bull with EPD in Top 10%, Gain test ratios of 121 and 115

PERFORMANCE TEST & GRADING SCORES			
Beginning WDA Ratio	121.21	Visual Grading Ratio	98.81
Gain Test ADG Ratio	115.07	TOTAL Ratio Score	102.77
Ultrasound Scan Ratio	99.79		

INDIVIDUAL PERFORMANCE RECORDS									EXPECTED PROGENY DIFFERENCES								ULTRASOUND EPDs			INDEXES		
	BW	WW	YW	SCROTAL AS OF 1/25/24	REA	%IMF	RIB FAT	RUMP FAT		CE	BW	WW	YW	MILK	TM	MCE	SC	REA	%IMF	RIB FAT	\$T	\$M
RATIO		86	100		100	100	100	100	EPD	4.11	-1.4	2	18	12	13.1	3.08	-0.21	-0.37	0.04	-0.035	32.59	3.86
CONTEMP		13	1		1	1	1	1	ACC	0.07	0.24	0.44	0.34	0.15	--	0.02	0.22	0	0	0	--	--
ADJ. TRAIT		473	973	51	12.29	2.13	0.19	0.39														



76

**CB ROC MAGIC MAN**

REG#: C1163985 DNA: DNA 102120010915 PV  
BRAND: CBR 30/22 DOB: 3/29/22

**CB ROCKEFELLER RANCH**  
DARK RED | POLLED



CF BROCK 450/3  
**CF POLLED PLAYBOY 155/9**  
FIRST LADY 27-10  
CF DREAM CATCHER 914  
**JK MISS DREAMY 588/0**  
CF VERITAS 422/6

\*\* VISION 905  
RED ESSENCE 129/07  
BULLET PROOF 864  
JAZZIE 293L55  
\*\* L2 CAPTAIN SUGAR 12/02  
\*\* OASIS 655  
\*\* VISION 905  
DIAMOND MAIDEN 1931/4

- Eye catching POLLED bull with the style and cut we expect from Polled Playboy
- Polled Playboy daughters are averaging over \$10,000 – here's the fast track
- Strong test ratios of 122 and 108 combine with Calving ease and Top 30% \$M

PERFORMANCE TEST & GRADING SCORES			
Beginning WDA Ratio	122.29	Visual Grading Ratio	100.28
Gain Test ADG Ratio	108.47	TOTAL Ratio Score	102.66
Ultrasound Scan Ratio	93.85		

INDIVIDUAL PERFORMANCE RECORDS								EXPECTED PROGENY DIFFERENCES								ULTRASOUND EPDs			INDEXES				
	BW	WW	YW	SCROTAL AS OF 1/25/24	REA	%IMF	RIB FAT	RUMP FAT		CE	BW	WW	YW	MILK	TM	MCE	SC	REA	%IMF	RIB FAT	\$T	\$M	
RATIO	100	103	106		89.3	136.9	127.3	130		EPD	4	0.6	34	49	5	21.6	3.34	0.57	-0.33	-0.05	-0.038	84.08	21.17
CONTEMP	5	3	2		2	1	1	1		ACC	0.16	0.44	0.41	0.32	0.14	--	0.03	0.18	0	0	0	--	--
ADJ. TRAIT	78	664	992	45	10.65	2.04	0.28	0.39															

77

**SWB 03922**

REG#: C1151412 DNA: DNA NE02378283 PV  
BRAND: SWB 3922 DOB: 2/16/22

**BOUNDS SWINGING B RANCH**  
RED | HORNED



NEW DIMENSION 805  
**SWB LUCKENBACH 08614**  
AUTUMN'S GIRL 31-10  
WPR'S CUTTING EDGE 2110  
**PINE SPRINGS 731**  
W H 201

V - SEVEN 501  
V - SEVEN 1673  
BULLET PROOF 864  
JAZZIE 293L55  
\*\* WPR'S THE TOTAL PACKAGE 7595  
\*\* WPR'S MISS PRISS 0907  
DAVIS DOUBLE D 0683  
W H 051H

- Luckenback delivers when it comes to growth and carcass performance
- Strong WW and YW ratios and EPD's in the Top 10% for both traits
- Big REA and IMF with REA EPD in Top 5%, \$T in Top 15% and \$M in Top 10%

PERFORMANCE TEST & GRADING SCORES			
Beginning WDA Ratio	102.42	Visual Grading Ratio	101.02
Gain Test ADG Ratio	104.63	TOTAL Ratio Score	102.59
Ultrasound Scan Ratio	111.68		

INDIVIDUAL PERFORMANCE RECORDS								EXPECTED PROGENY DIFFERENCES								ULTRASOUND EPDs			INDEXES				
	BW	WW	YW	SCROTAL AS OF 1/25/24	REA	%IMF	RIB FAT	RUMP FAT		CE	BW	WW	YW	MILK	TM	MCE	SC	REA	%IMF	RIB FAT	\$T	\$M	
RATIO	94.2	114	109		103	100.3	96.7	88.2		EPD	3.68	0.3	43	64	8	29.9	3.28	0.81	0.7	-0.04	-0.028	111.93	28.8
CONTEMP	17	18	4		6	9	7	12		ACC	0.16	0.48	0.46	0.43	0.14	--	0.04	0.2	0.45	0.5	0.43	--	--
ADJ. TRAIT	73	665	1056	47	12.38	3.62	0.29	0.45															

78

**GMR MR 834**

REG#: C1170877 DNA: DNA NE01800110 SV  
BRAND: GMR 834 DOB: 3/28/22

**GOLDEN MEADOWS RANCH LLC**  
RED | HORNED



CF BROCK 450/3  
**CF BRAVADO 373/5**  
\*\* BETTY'S LAST 45/1  
SLICK RED 426/2  
**GMR SLICK RED'S BABY DOLL 318**  
112

\*\* VISION 905  
RED ESSENCE 129/07  
BRYAN RANCH 126/6  
DIAMOND W 34/3  
SLICK 16  
COLLIER FARMS CF 105/0  
\*\* FUSION 578/3  
01

- Stylish Bravado son with the looks, muscle and shape we expect
- Calving ease bull with strong WW of 672 and ratio of 111: test ratios high as well
- Strong bottom side maternal genetics and a Top 30% \$M index to back it up

PERFORMANCE TEST & GRADING SCORES			
Beginning WDA Ratio	117.18	Visual Grading Ratio	101.02
Gain Test ADG Ratio	112.24	TOTAL Ratio Score	102.53
Ultrasound Scan Ratio	88.73		

INDIVIDUAL PERFORMANCE RECORDS								EXPECTED PROGENY DIFFERENCES								ULTRASOUND EPDs			INDEXES				
	BW	WW	YW	SCROTAL AS OF 1/25/24	REA	%IMF	RIB FAT	RUMP FAT		CE	BW	WW	YW	MILK	TM	MCE	SC	REA	%IMF	RIB FAT	\$T	\$M	
RATIO	100.4	111	100		100	100	100	100		EPD	5.17	-0.8	25	39	9	22.0	3.28	0.46	-0.18	-0.02	-0.047	68.3	21.7
CONTEMP	14	3	1		1	1	1	1		ACC	0.33	0.53	0.52	0.45	0.18	--	0.18	0.32	0	0	0	--	--
ADJ. TRAIT	73	672	889	47	9.83	1.72	0.16	0.2															

79

V7 209/22

REG#: P316767 DNA:  
BRAND: V7 209/22 DOB: 2/25/22

V - SEVEN  
RED | DE-HORNED



RED BULL 511  
V7 EXTRA DIMENSION 401/4  
COLLIER FARMS 553/7

NEW DIMENSION 805  
HS HEAVENLY HATTIE 62T14

- Double bred Red Bull 511 bringing in the extra dimension and muscling you want
- Low birth weight and Calving Ease with solid WW and YW actual growth
- High WDA test ratio of 123, ADG ratio of 107 and nice REA size

RED BULL 511

\*\* TABASCO 3018K10  
\*\* PHANTOM'S DIAMOND 119/9  
NEW DIMENSION 805  
HS HEAVENLY HATTIE 62T14

V - SEVEN 1979/5

V - SEVEN 1784

V - SEVEN 501  
COLLIER FARMS 37/1

PERFORMANCE TEST & GRADING SCORES

Beginning WDA Ratio	123.44	Visual Grading Ratio	101.02
Gain Test ADG Ratio	107.53	TOTAL Ratio Score	102.51
Ultrasound Scan Ratio	86.94		

INDIVIDUAL PERFORMANCE RECORDS

RATIO	BW	WW	YW	SCROTAL AS OF 1/25/24	REA	%IMF	RIB FAT	RUMP FAT	EXPECTED PROGENY DIFFERENCES								ULTRASOUND EPDs			INDEXES		
									CE	BW	WW	YW	MILK	TM	MCE	SC	REA	%IMF	RIB FAT	\$T	\$M	
CONTEMP	1	2	2		2	2	2	2	EPD	5.71	-0.8	19	28	5	14.1	3.34	0.23	-0.1	-0.04	-0.052	49.51	14.41
ADJ. TRAIT	68	643	971	43	11.39	0.85	0.16	0.3	ACC	0.19	0.51	0.5	0.44	0.16	--	0.04	0.26	0	0	0	--	--

80

CF 973/2

REG#: C1165341 DNA: DNA 62521017875  
BRAND: CF 973/2 DOB: 3/2/22

COLLIER FARMS  
RED | HORNED



CF GALVESTON 414/5  
COLLIER FARMS CF 882/8  
CJ SUPERIOR DREAM 1117

NEW DIMENSION 805  
CF LOGAN'S LOVE 617/1

- Knock out YW performance with 1215 and ratio of 122, EPD in Top 5%
- Pacesetter dam from Larry Wright herd know for milk and fertility
- Big WDA ratios, WW EPD in Top 15% and \$T index in Top 5% of breed

BLAU RANCH 665

CF DREAM CATCHER 914  
\* MISS SUPERIOR 8  
FOUNDATION BEEFMASTERS 2516  
BLAU RANCH 348

W FIVE 038

W FIVE 362

GUADALUPE RANCH 60/9  
W FIVE 822

PERFORMANCE TEST & GRADING SCORES

Beginning WDA Ratio	127.76	Visual Grading Ratio	96.60
Gain Test ADG Ratio	112.24	TOTAL Ratio Score	102.20
Ultrasound Scan Ratio	105.79		

INDIVIDUAL PERFORMANCE RECORDS

RATIO	BW	WW	YW	SCROTAL AS OF 1/25/24	REA	%IMF	RIB FAT	RUMP FAT	EXPECTED PROGENY DIFFERENCES								ULTRASOUND EPDs			INDEXES		
									CE	BW	WW	YW	MILK	TM	MCE	SC	REA	%IMF	RIB FAT	\$T	\$M	
CONTEMP	11	11	10		1	1	1	1	EPD	1.45	2.3	37	72	11	29.8	2.54	0.88	0.3	-0.06	-0.027	124.88	14.91
ADJ. TRAIT	81	593	1215	43	13.61	2.36	0.33	0.48	ACC	0.31	0.49	0.49	0.39	0.21	--	0.18	0.3	0	0	0	--	--

81

CF 767/2

REG#: C1165239 DNA: DNA 62521017662 PV  
BRAND: CF 767/2 DOB: 2/28/22

COLLIER FARMS  
LIGHT RED | HORNED



\*\* TABASCO 3018K10  
CF RUSTON 871/3  
\* CF RAQUEL 933/9

\*\* RED TIGER 9075  
JUNGLE SPICE 786

- Ruston son with Top 1% IMF EPD as proven by high IMF ratio of 120
- Strong individual growth with WW of 627 and YW over 1000 lbs.
- Gentle natured, easy fleshing bull with high milk and \$M in Top 40%

LASATER 7015

\*\* LOGAN 62M27  
JUNGLE WHISPER 49/1  
FOUNDATION BEEFMASTERS 5306  
FOUNDATION BEEFMASTERS 5508

PINE SPRINGS 358

PINE SPRINGS 737

PINE SPRINGS 533  
BUSTER 513

PERFORMANCE TEST & GRADING SCORES

Beginning WDA Ratio	119.18	Visual Grading Ratio	95.12
Gain Test ADG Ratio	127.31	TOTAL Ratio Score	102.17
Ultrasound Scan Ratio	109.32		

INDIVIDUAL PERFORMANCE RECORDS

RATIO	BW	WW	YW	SCROTAL AS OF 1/25/24	REA	%IMF	RIB FAT	RUMP FAT	EXPECTED PROGENY DIFFERENCES								ULTRASOUND EPDs			INDEXES		
									CE	BW	WW	YW	MILK	TM	MCE	SC	REA	%IMF	RIB FAT	\$T	\$M	
CONTEMP	13	13	12		1	1	1	1	EPD	3.88	-0.3	18	29	11	19.9	3.06	0.4	0.06	0.37	-0.009	55.32	18.08
ADJ. TRAIT	78	627	1031	41	12.08	3.44	0.31	0.38	ACC	0.32	0.54	0.52	0.46	0.22	--	0.18	0.34	0	0	0	--	--



82

**SWB 08922**

REG#: C1153756 DNA: DNA NE02901582 PV  
BRAND: SWB 8922 DOB: 5/2/22

**BOUNDS SWINGING B RANCH**

RED | SCURS



SUMMIT 5306  
CAIN CCC BENTLEY 462F8

\* DESTINY 4622

CHRK FIRST CLASS 2040

CHANNAROCK CHRK 523E

CHANNAROCK CHRK 1937

J & K 1001  
M & M CATTLE 0714

J & K 1001  
\* FRENZEL 971  
CHRK GENESIS 1500T  
CHRK MO PRINCESS 1506T

SURGEON 1354/6  
CHANNAROCK CHRK 1529T

- Bentley delivers unbelievable EPD profile and actual performance across chart
- Strong WW and YW with huge REA and massive IMF: Carcass EPD's in Top 3%
- Top 1% Milk, Top 5% YW, TM, Stay, REA, IMF, \$T; \$M in Top 20%

**PERFORMANCE TEST & GRADING SCORES**

Beginning WDA Ratio	106.91	Visual Grading Ratio	97.33
Gain Test ADG Ratio	114.94	TOTAL Ratio Score	102.09
Ultrasound Scan Ratio	117.67		

**INDIVIDUAL PERFORMANCE RECORDS**

	BW	WW	YW	SCROTAL AS OF 1/25/24	REA	%IMF	RIB FAT	RUMP FAT
RATIO	95.1	111	105		109.1	113.3	140	90.2
CONTEMP	11	18	5		4	2	2	11
ADJ. TRAIT	70	646	1114	45	13.11	4.09	0.42	0.46

**EXPECTED PROGENY DIFFERENCES**

**ULTRASOUND EPDs**

**INDEXES**

	CE	BW	WW	YW	MILK	TM	MCE	SC	REA	%IMF	RIB FAT	\$T	\$M
EPD	3.12	0.4	39	72	14	34.0	2.63	0.95	0.82	0.22	-0.001	127.12	24.04
ACC	0.32	0.52	0.5	0.5	0.17	--	0.18	0.34	0.5	0.56	0.48	--	--

83

**CB ROC 22/22**

REG#: C1163383 DNA: DNA 101819051386 PV  
BRAND: CBR 22/22 DOB: 4/3/22

**CB ROCKEFELLER RANCH**

RED | POLLED



CF BROCK 450/3  
CF POLLED PLAYBOY 155/9

FIRST LADY 27-10

\*\* LOGAN 62M27

COLLIER FARMS CF 414/7

COLLIER FARMS CF 814/3

\*\* VISION 905  
RED ESSENCE 129/07

BULLET PROOF 864  
JAZZIE 293L55  
QUASAR 991  
JEZABELLE 62J8

\*\* L2 CAPTAIN SUGAR 12/02  
TIGER'S DESTINY 602

- Polled Playboy back over Logan and Captain Sugar really adds conformation
- Excellent test ratios with a WDA of 114 and ADG ratio of 123
- Strong REA area, IMF ratio of 109 and very calving ease friendly

**PERFORMANCE TEST & GRADING SCORES**

Beginning WDA Ratio	114.37	Visual Grading Ratio	97.33
Gain Test ADG Ratio	123.54	TOTAL Ratio Score	101.83
Ultrasound Scan Ratio	99.10		

**INDIVIDUAL PERFORMANCE RECORDS**

	BW	WW	YW	SCROTAL AS OF 1/25/24	REA	%IMF	RIB FAT	RUMP FAT
RATIO	100.4	99	98.1		98	109.5	80	63.9
CONTEMP	3	3	3		2	2	3	3
ADJ. TRAIT	77	571	911	45	11.1	2.53	0.2	0.23

**EXPECTED PROGENY DIFFERENCES**

**ULTRASOUND EPDs**

**INDEXES**

	CE	BW	WW	YW	MILK	TM	MCE	SC	REA	%IMF	RIB FAT	\$T	\$M
EPD	5.12	-0.2	21	32	5	15.1	3.31	0.31	-0.28	0	-0.046	56.48	13.98
ACC	0.15	0.43	0.42	0.34	0.14	--	0.04	0.19	0	0	0	--	--

84

**RW 230**

REG#: C1163893 DNA:  
BRAND: RW 230 DOB: 3/14/22

**WALKER**

RED | POLLED



\*\* FUSION 578/3  
CF BISMARCK 845/6

COLLIER FARMS CF 273/4

RILEY 148/1

WALKER RW 851

WALKER RW 614

\*\* TABASCO 3018K10  
\*\* PHANTOM'S DIAMOND 119/9

COLLIER FARMS CF 410/0  
SOUTHERN MISS J 0555

\*\* FUSION 578/3  
\* CF RAQUEL 933/9

WALKER RED 502  
WALKER 233

- Bismarck continues to deliver calving ease genetics in POLLED package
- Impressive depth and capacity with high test ratios of 114 on WDA and ADG
- Strong REA ratio of 105 with a solid IMF and big Milk EPD in Top 10%

**PERFORMANCE TEST & GRADING SCORES**

Beginning WDA Ratio	114.82	Visual Grading Ratio	98.32
Gain Test ADG Ratio	114.12	TOTAL Ratio Score	101.58
Ultrasound Scan Ratio	98.67		

**INDIVIDUAL PERFORMANCE RECORDS**

	BW	WW	YW	SCROTAL AS OF 1/25/24	REA	%IMF	RIB FAT	RUMP FAT
RATIO					105.2	92.9	85	58.1
CONTEMP					2	3	3	3
ADJ. TRAIT				47	11.38	2.36	0.17	0.18

**EXPECTED PROGENY DIFFERENCES**

**ULTRASOUND EPDs**

**INDEXES**

	CE	BW	WW	YW	MILK	TM	MCE	SC	REA	%IMF	RIB FAT	\$T	\$M
EPD	4.22	-1.3	4	15	12	13.9	2.81	-0.25	-0.24	-0.05	-0.037	26.63	8.27
ACC	0.08	0.23	0	0	0	--	0.03	0	0	0	0	--	--

85

**RHR 122**

REG#: C1153452 DNA: DNA 62521012043 PV  
BRAND: RH 122 DOB: 3/8/22

**ROAD HOUSE BEEFMASTERS  
DARK RED | HORNED**



CF RIPTIDE 875/3  
**CF SERGEANT RJ 907/8**  
COLLIER FARMS CF 749/6  
CF MASTERPIECE 685  
**CJ MAHAGONY 1642**  
ZIPPERER 4138

\*\* TABASCO 3018K10  
\* CF RAQUEL 933/9  
CF DREAM CATCHER 914  
\*\* LOGAN'S BENGAL BABY 134/0  
L2 CAPTAIN JACK 43/07  
\*\* OASIS 655  
EMS CAVALIER'S IMAGE 024  
PRISSY 62/09

- Large frame bull with extra bone structure and size needed for high growth
- Big WW and YW EPD's in the Top 15% and 20% respectively
- Strong REA size, TM and SC EPD's and \$T index in Top 30% \$M in Top 10%

PERFORMANCE TEST & GRADING SCORES			
Beginning WDA Ratio	116.62	Visual Grading Ratio	99.79
Gain Test ADG Ratio	110.36	<b>TOTAL Ratio Score 101.50</b>	
Ultrasound Scan Ratio	89.44		

INDIVIDUAL PERFORMANCE RECORDS								EXPECTED PROGENY DIFFERENCES								ULTRASOUND EPDs			INDEXES				
	BW	WW	YW	SCROTAL AS OF 1/25/24	REA	%IMF	RIB FAT	RUMP FAT		CE	BW	WW	YW	MILK	TM	MCE	SC	REA	%IMF	RIB FAT	\$T	\$M	
RATIO	100.4	100	100		100	100	100	100	EPD	2.24	1.4	39	55	9	28.4	2.89	0.61	-0.08	-0.17	-0.028	92.85	27.37	
CONTEMP	3	1	1		1	1	1	1	ACC	0.31	0.47	0.37	0.37	0.15	--	0.18	0.28	0	0	0	--	--	
ADJ. TRAIT	78	586	862	39	11.66	1.06	0.08	0.16															

86

**SWB 08122**

REG#: C1158684 DNA: DNA NE02901410 PV  
BRAND: SWB 8122 DOB: 3/31/22

**BOUNDS SWINGING B RANCH  
RED | HORNED**



SUMMIT 5306  
**SWB TETON 06918**  
SWB DOTSY 76-10  
BULLET PROOF 864  
**SWB DOTSY 76-10**  
BLACK STACI 420

J & K 1001  
M & M CATTLE 0714  
BULLET PROOF 864  
BLACK STACI 420  
CJ'S BANDELERO 960  
\*\* OASIS 655  
\*\* BLACK JACK 21  
MISS STACI 927

- Double bred Dotsy bull bring in the high IMF ratio and EPD in the Top 2%
- Great growth EPD's in the Top 20% and 25% for WW and YW
- Top 25% \$T and Top 35% \$M showing the balance and versatility

PERFORMANCE TEST & GRADING SCORES			
Beginning WDA Ratio	97.23	Visual Grading Ratio	100.53
Gain Test ADG Ratio	98.73	<b>TOTAL Ratio Score 101.47</b>	
Ultrasound Scan Ratio	115.07		

INDIVIDUAL PERFORMANCE RECORDS								EXPECTED PROGENY DIFFERENCES								ULTRASOUND EPDs			INDEXES				
	BW	WW	YW	SCROTAL AS OF 1/25/24	REA	%IMF	RIB FAT	RUMP FAT		CE	BW	WW	YW	MILK	TM	MCE	SC	REA	%IMF	RIB FAT	\$T	\$M	
RATIO	98.2	109			107.9	101.4	96.2	122.4	EPD	1.63	1.9	35	53	6	23.2	3.01	0.6	0.45	0.36	-0.013	96.61	19.71	
CONTEMP	30	18	1		4	9	6	5	ACC	0.32	0.57	0.56	0.55	0.18	--	0.18	0.34	0.55	0.6	0.53	--	--	
ADJ. TRAIT	73	578	980	48	13.37	3.65	0.25	0.6															

87

**GMR ROLLING THUNDER 828**

REG#: C1170874 DNA: DNA NE01800104 PV  
BRAND: GMR 828 DOB: 3/18/22

**GOLDEN MEADOWS RANCH LLC  
RED MOT UL | HORNED**



\*\* L2 CAPTAIN SUGAR 12/02  
**\*\* CF SUGAR BRITCHES 040**  
\*\* OASIS 655  
\*\* LOGAN 62M27  
**CF LOGAN'S DIAMOND MAIDEN 160/4**  
DIAMOND MAIDEN 1931/4

\*\* INFINITY 120/96  
\*\* SUGAR ANN 45/6  
\*\* CAVALIER 19/5  
\*\* SEX LIFE 388  
QUASAR 991  
JEZABELLE 62J8  
\*\* CAVALIER 19/5  
L2 MAIDEN LADY 154/00

- Extremely attractive made bull with the long flowing lines and color we want
- Outstanding pedigree with Sugar Britches on Logan and Diamond Maiden
- From sale topping females to stylish bulls the high growth ratio bull has it all

PERFORMANCE TEST & GRADING SCORES			
Beginning WDA Ratio	120.76	Visual Grading Ratio	98.07
Gain Test ADG Ratio	111.30	<b>TOTAL Ratio Score 101.45</b>	
Ultrasound Scan Ratio	95.99		

INDIVIDUAL PERFORMANCE RECORDS								EXPECTED PROGENY DIFFERENCES								ULTRASOUND EPDs			INDEXES				
	BW	WW	YW	SCROTAL AS OF 1/25/24	REA	%IMF	RIB FAT	RUMP FAT		CE	BW	WW	YW	MILK	TM	MCE	SC	REA	%IMF	RIB FAT	\$T	\$M	
RATIO	100.5	105	116.6		113.1	141.8	150	108	EPD	2.81	1.5	23	47	7	18.2	3.08	0.2	0.1	0.07	-0.019	81.94	6.53	
CONTEMP	9	3	3		1	1	1	2	ACC	0.33	0.55	0.54	0.48	0.33	--	0.2	0.41	0	0	0	--	--	
ADJ. TRAIT	68	657	955	44	12.49	1.56	0.15	0.27															



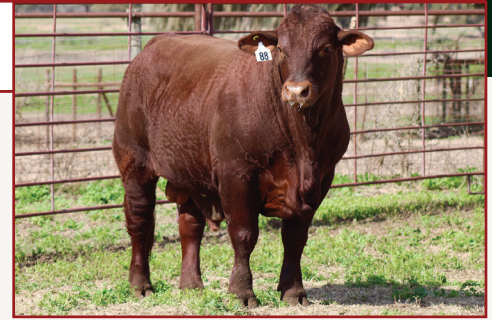
88

**NCF 237**

REG#: C1161711 DNA: DNAAF03686850 PV  
BRAND: NC 237 DOB: 3/28/22

**NEW CUT FARMS**

RED | HORNED



- \*\* LOGAN 62M27
- \*\* VISION 905
- \*\* PENELOPE 293J11
- \*\* CF SUGAR BRITCHES 040
- STRAWBERRY WINE 437**
- \*\* DESERT WINE 48/07

- QUASAR 991
- JEZABELLE 62J8
- \*\* PAINTED TIGER 3-390
- \*\* LADY VICTORIA 236
- \*\* L2 CAPTAIN SUGAR 12/02
- \*\* OASIS 655
- \*\* INFINITY 120/96
- RED RED WINE 67/04

- Vision with 293 cow family and Desert Wine bringing in 6/2 are maternal legends
- Strong test ratios with a WDA of 102 and ADG ratio of 123
- Low birth weight, dark red color, gentle disposition from a great program

PERFORMANCE TEST & GRADING SCORES			
Beginning WDA Ratio	102.51	Visual Grading Ratio	98.81
Gain Test ADG Ratio	123.54	TOTAL Ratio Score	101.40
Ultrasound Scan Ratio	96.26		

INDIVIDUAL PERFORMANCE RECORDS								EXPECTED PROGENY DIFFERENCES								ULTRASOUND EPDs			INDEXES				
	BW	WW	YW	SCROTAL AS OF 1/25/24	REA	%IMF	RIB FAT	RUMP FAT		CE	BW	WW	YW	MILK	TM	MCE	SC	REA	%IMF	RIB FAT	\$T	\$M	
RATIO	100	100	100		100	100	100	100		EPD	3.32	0.6	9	13	2	6.7	3.17	-0.21	-0.29	0	-0.033	23.23	4.92
CONTEMP	1	1	1		1	1	1	1		ACC	0.31	0.44	0.45	0.45	0.3	--	0.19	0.39	0	0	0	--	--
ADJ. TRAIT	68	549	755	48	9.09	2.99	0.18	0.28															

89

**WFBM CLASSIC LOVE 19/2**

REG#: C1162144 DNA: DNA62521017114 PV  
BRAND: WF 19/2 DOB: 3/19/22

**WOOLMAN FARM**

RED | HORNED



- CF NUECES 955/5
- CF CLASSIC NUECES 258/9**
- 4C CLASSIC BEAUTY 607-9
- \*\* FUSION 578/3
- COLLIER FARMS CF 547/8**
- COLLIER FARMS CF 394/5

- \*\* FUSION 578/3
- XCITED LADY 07/09
- \*\* CLASSIC COTTON 89/135
- HILLTOP RANCH 928/0
- \*\* TABASCO 3018K10
- \*\* PHANTOM'S DIAMOND 119/9
- \*\* VISION 905
- H M S 1845/3

- Low birthweight and calving ease deluxe with Classic Nueces and Fusion genetics
- Dark red, smooth made bull with great style and conformation, perfect for females
- Big 718lb weaning weight, strong REA over 11" and double Fusion for extra milk

PERFORMANCE TEST & GRADING SCORES			
Beginning WDA Ratio	115.79	Visual Grading Ratio	99.55
Gain Test ADG Ratio	105.65	TOTAL Ratio Score	101.34
Ultrasound Scan Ratio	95.13		

INDIVIDUAL PERFORMANCE RECORDS								EXPECTED PROGENY DIFFERENCES								ULTRASOUND EPDs			INDEXES				
	BW	WW	YW	SCROTAL AS OF 1/25/24	REA	%IMF	RIB FAT	RUMP FAT		CE	BW	WW	YW	MILK	TM	MCE	SC	REA	%IMF	RIB FAT	\$T	\$M	
RATIO	100	100	100		100	100	100	100		EPD	5.92	-1.2	14	27	9	15.5	3.3	0.2	-0.26	0.07	-0.03	48.46	12.3
CONTEMP	1	1	1		1	1	1	1		ACC	0.31	0.36	0.36	0.36	0.16	--	0.17	0.28	0	0	0	--	--
ADJ. TRAIT	71	718	869	39	11.1	2.02	0.1	0.18															

90

**CR RAN 226**

REG#: C1173909 DNA:  
BRAND: C-C 226 DOB: 2/28/22

**COLLIER FARMS**

RED | HORNED



- CF KINGSTON 730/4
- 7C MONARCH 14/19**
- 7C PROM QUEEN 562/15
- \*\* VISION 905
- COLLIER FARMS CF 810/3**
- SUGAR IN THE EVENING 60/07

- \*\* LOGAN 62M27
- CIRCLE C 91/5
- COLLIER FARMS CF 431/3
- 7C 214/2
- \*\* LOGAN 62M27
- \*\* PENELOPE 293J11
- \*\* SYNERGY 84/95
- SUGAR TIME 34/03

- Perfect option for virgin heifers with extremely low 54lb. BW and calving ease EPD
- Monarch and Vision both delivered lots of style and conformational design
- Solid REA measure and big time ADG test ratio of 125 showing growth

PERFORMANCE TEST & GRADING SCORES			
Beginning WDA Ratio	108.19	Visual Grading Ratio	96.84
Gain Test ADG Ratio	125.42	TOTAL Ratio Score	101.25
Ultrasound Scan Ratio	101.00		

INDIVIDUAL PERFORMANCE RECORDS								EXPECTED PROGENY DIFFERENCES								ULTRASOUND EPDs			INDEXES				
	BW	WW	YW	SCROTAL AS OF 1/25/24	REA	%IMF	RIB FAT	RUMP FAT		CE	BW	WW	YW	MILK	TM	MCE	SC	REA	%IMF	RIB FAT	\$T	\$M	
RATIO	100	100	100		100	100	100	100		EPD	4.14	-0.1	16	30	7	14.8	3.05	0.02	-0.27	-0.12	-0.034	50.62	9.81
CONTEMP	1	1	1		1	1	1	1		ACC	0	0	0	0	0	--	0	0	0	0	0	--	--
ADJ. TRAIT	54	438	796	42	11.58	2.31	0.26	-0.13															

91

**SWB 06222**

REG#: C1172631 DNA: DNA NE02901558 PV  
BRAND: SWB 6222 DOB: 3/20/22

**BOUNDS SWINGING B RANCH**

RED | SCURS



CF BROCK 450/3  
CF BRAVADO 373/5  
\*\* BETTY'S LAST 45/1  
CHRK GENERATOR 2010  
CHRK HOT N FUN 203B  
CHANNAROCK CHRK 1995

\*\* VISION 905  
RED ESSENCE 129/07  
BRYAN RANCH 126/6  
DIAMOND W 34/3  
CHRK GENESIS 1500T  
FOUR BAR S 907  
CHRK GENESIS 1500T  
CHANNAROCK FARM 1451/7

- Stylish dark red bull with lots of looks and polled genetics on bottom
- Full sister sold for \$27,000 at the Genetic Investment sale last May
- Super calving ease option with strong WDA test ratio of 113- growth spread

PERFORMANCE TEST & GRADING SCORES			
Beginning WDA Ratio	113.51	Visual Grading Ratio	100.28
Gain Test ADG Ratio	100.47	TOTAL Ratio Score	101.18
Ultrasound Scan Ratio	95.85		

INDIVIDUAL PERFORMANCE RECORDS								EXPECTED PROGENY DIFFERENCES								ULTRASOUND EPDs			INDEXES				
	BW	WW	YW	SCROTAL AS OF 1/25/24	REA	%IMF	RIB FAT	RUMP FAT		CE	BW	WW	YW	MILK	TM	MCE	SC	REA	%IMF	RIB FAT	\$T	\$M	
RATIO	96.9	76			77.2	76.1	65.4		EPD	4.28	-0.8	17	25	7	15.3	2.44	0.24	-0.2	-0.21	-0.054	42.39	15.78	
CONTEMP	30	18	1		13	13	13		ACC	0.33	0.55	0.54	0.54	0.15	--	0.17	0.34	0.54	0.59	0.52	--	--	
ADJ. TRAIT	74	404	822	47	9.57	2.74	0.17	0															

92

**SWB 09922**

REG#: C1155485 DNA: DNA NE02901590 PV  
BRAND: SWB 9922 DOB: 5/21/22

**BOUNDS SWINGING B RANCH**

LIGHT RED | HORNED



SUMMIT 5306  
SWB TETON 06918  
SWB DOTSY 76-10  
CJ'S THE JUDGE 1321  
MISS CJ 1619  
PAINTED LOVE 46

J & K 1001  
M & M CATTLE 0714  
BULLET PROOF 864  
BLACK STACI 420  
CJ'S JUSTICE J100  
MISS CJ 1014  
CF DR. LOVE 414  
EMS TIGRESS III 133

- Teton continues to deliver growth EPD's and performance to progeny
- Top 20% EPD's for WW, YW with monster carcass EPD's in Top 5% for IMF
- Nice actual REA and IMF with \$T index in Top 25% and \$M in Top 30%

PERFORMANCE TEST & GRADING SCORES			
Beginning WDA Ratio	106.76	Visual Grading Ratio	101.27
Gain Test ADG Ratio	90.00	TOTAL Ratio Score	101.16
Ultrasound Scan Ratio	105.99		

INDIVIDUAL PERFORMANCE RECORDS								EXPECTED PROGENY DIFFERENCES								ULTRASOUND EPDs			INDEXES				
	BW	WW	YW	SCROTAL AS OF 1/25/24	REA	%IMF	RIB FAT	RUMP FAT		CE	BW	WW	YW	MILK	TM	MCE	SC	REA	%IMF	RIB FAT	\$T	\$M	
RATIO	95.1	100			100	100	100	100	EPD	3.29	0.6	34	55	7	24.5	3.45	0.65	0.22	0.23	-0.017	98.74	20.09	
CONTEMP	11	1	1		1	1	1	1	ACC	0.32	0.52	0.49	0.47	0.15	--	0.17	0.3	0.46	0.52	0.44	--	--	
ADJ. TRAIT	70	538	948	40	10.55	3.64	0.19	0.39															

93

**CF 988/2**

REG#: C1174501 DNA: DNA 62521017856 PV  
BRAND: CF 988/2 DOB: 1/22/22

**COLLIER FARMS**

RED | HORNED



CF BROCK 450/3  
CF BRAVADO 373/5  
\*\* BETTY'S LAST 45/1  
WB SOLUTION 67/6  
COLLIER FARMS CF 735/0  
SHE'S A LEGACY 426/8

\*\* VISION 905  
RED ESSENCE 129/07  
BRYAN RANCH 126/6  
DIAMOND W 34/3  
CF DREAM CATCHER 914  
\*\* LOGAN'S BENGAL BABY 134/0  
\*\* LOGAN 62M27  
\*\* LADY LEGACY 338/12

- Fancy made Bravado son delivering the looks and style that create high value
- Strong test ratios with WDA ratio of 117 and ADG test ratio of 113
- Big REA measure and ratio of 110 and IMF ratio of 101 for added carcass

PERFORMANCE TEST & GRADING SCORES			
Beginning WDA Ratio	117.41	Visual Grading Ratio	96.84
Gain Test ADG Ratio	113.18	TOTAL Ratio Score	101.09
Ultrasound Scan Ratio	102.44		

INDIVIDUAL PERFORMANCE RECORDS								EXPECTED PROGENY DIFFERENCES								ULTRASOUND EPDs			INDEXES				
	BW	WW	YW	SCROTAL AS OF 1/25/24	REA	%IMF	RIB FAT	RUMP FAT		CE	BW	WW	YW	MILK	TM	MCE	SC	REA	%IMF	RIB FAT	\$T	\$M	
RATIO	105.4	88			110.2	101.3	55.6	62.8	EPD	2.96	0.7	33	33	5	21.4	2.53	0.55	0.02	-0.12	-0.062	57.33	31.07	
CONTEMP	14	14	14		3	7	12	13	ACC	0.33	0.54	0.53	0.47	0.16	--	0.17	0.34	0	0	0	--	--	
ADJ. TRAIT	79	605	972	42	12.73	2.29	0.15	0.27															



94

**CWL 5522**

REG#: C1158761 DNA: DNA 21121059777 SV  
BRAND: CWL 5522 DOB: 3/2/22

**CIRCLE WL BEEFMASTERS**  
DARK RED | DE-HORNED



CF DREAM CATCHER 914

\*\* L2 CAPTAIN SUGAR 12/02  
\*\* OASIS 655

- Codigo calves add growth and bone to the mix with predictable genetics
- Big WW and YW EPD's and test ratios of 120 and 112 prove up the growth
- Huge YW of 1157, and impressive indexes with \$T and \$M in Top 40%

**CF CODIGO 906/8**

CF PICTURE'S PORTRAIT 794/6

CF RIPTIDE 875/3  
\*\* THE PICTURE COW 463/3  
DR'S RILEY ROHO 1003/4  
HUBBLE LAND AND CATTLE 45/1

R WALTHER 51/0

**CIRCLE WL 1/14**

WL BEEFMASTERS 3/8

COTTON RED 3/148  
WL BEEFMASTERS 30/9

**PERFORMANCE TEST & GRADING SCORES**

Beginning WDA Ratio	120.80	Visual Grading Ratio	99.05
Gain Test ADG Ratio	112.24	TOTAL Ratio Score	101.05
Ultrasound Scan Ratio	84.04		

**INDIVIDUAL PERFORMANCE RECORDS**

	BW	WW	YW	SCROTAL AS OF 1/25/24	REA	%IMF	RIB FAT	RUMP FAT
RATIO	99.8	102			90.4	81.8	66.7	87.5
CONTEMP	6	2	1		2	2	2	2
ADJ. TRAIT	72	568	1157	40	10.14	0.99	0.08	0.21

**EXPECTED PROGENY DIFFERENCES**

**ULTRASOUND EPDs**

**INDEXES**

	CE	BW	WW	YW	MILK	TM	MCE	SC	REA	%IMF	RIB FAT	\$T	\$M
EPD	1.9	1.3	30	49	9	23.8	2.54	0.4	0.09	-0.21	-0.04	82.56	18.39
ACC	0.31	0.47	0	0	0	--	0.18	0	0	0	0	--	--

95

**CF 999/2**

REG#: C1165355 DNA: DNA 62521017848 PV  
BRAND: CF 999/2 DOB: 3/18/22

**COLLIER FARMS**  
RED | HORNED



\*\* CF SUGAR BRITCHES 040

\*\* L2 CAPTAIN SUGAR 12/02  
\*\* OASIS 655

- Cool made, low birth weight bull with flashy design, color and conformation
- Stout test ratios with a 115 WDA and 118 ADG for growth
- Massive IMF ratio of 135 with Diamond Maiden up close in the genetics

**CF DIAMOND BRITCHES 412/7**

DIAMOND MAIDEN 1931/4

\*\* CAVALIER 19/5  
L2 MAIDEN LADY 154/00  
\*\* INFINITY 120/96  
CLARK JONES 5009

DW'S RED BULL 803

**COLLIER FARMS CF 188/2**

CLARK JONES 7-7

\*\* CJ'S SOUL MAN 168  
COTTAGE FARM 226

**PERFORMANCE TEST & GRADING SCORES**

Beginning WDA Ratio	115.60	Visual Grading Ratio	96.35
Gain Test ADG Ratio	118.83	TOTAL Ratio Score	101.00
Ultrasound Scan Ratio	101.14		

**INDIVIDUAL PERFORMANCE RECORDS**

	BW	WW	YW	SCROTAL AS OF 1/25/24	REA	%IMF	RIB FAT	RUMP FAT
RATIO	110.8	96	97.7		92.3	135.5	125	127.6
CONTEMP	11	11	10		6	1	3	2
ADJ. TRAIT	70	524	970	43	10.74	2.94	0.25	0.37

**EXPECTED PROGENY DIFFERENCES**

**ULTRASOUND EPDs**

**INDEXES**

	CE	BW	WW	YW	MILK	TM	MCE	SC	REA	%IMF	RIB FAT	\$T	\$M
EPD	3.8	1.1	24	36	8	19.6	3.05	0.2	-0.12	0.07	-0.019	63.63	16.04
ACC	0.32	0.51	0.49	0.42	0.2	--	0.18	0.33	0	0	0	--	--

96

**SWB 04022**

REG#: C1151413 DNA: DNA NE02901406 SV  
BRAND: SWB 4022 DOB: 2/18/22

**BOUNDS SWINGING B RANCH**  
RED | HORNED



CF RIPTIDE 875/3

\*\* TABASCO 3018K10  
\* CF RAQUEL 933/9

- From design and structure to growth and overall sales value, Riptide impresses
- Big WW and YW EPD values to compliment individual ratios well over 100
- Awesome carcass data for REA and IMF with big 3.7% marbling and strong \$T

**CF WABASH 107/9**

\* COLLIER FARMS CF 408/2

V - SEVEN 13/0  
MISS CJ 1032  
SMITH & WESSON 43/09  
BLACK BAYOU 610

12 GAUGE 12

**HILL SIDE 730**

T5 355/0

RIO GRANDE SR3184  
HLC DIAMOND BABY 9852

**PERFORMANCE TEST & GRADING SCORES**

Beginning WDA Ratio	112.43	Visual Grading Ratio	97.33
Gain Test ADG Ratio	101.68	TOTAL Ratio Score	100.84
Ultrasound Scan Ratio	112.92		

**INDIVIDUAL PERFORMANCE RECORDS**

	BW	WW	YW	SCROTAL AS OF 1/25/24	REA	%IMF	RIB FAT	RUMP FAT
RATIO	96.8	106	103		103	104.7	150	119.6
CONTEMP	17	18	4		7	6	1	2
ADJ. TRAIT	71	617	990	40	12.38	3.78	0.45	0.61

**EXPECTED PROGENY DIFFERENCES**

**ULTRASOUND EPDs**

**INDEXES**

	CE	BW	WW	YW	MILK	TM	MCE	SC	REA	%IMF	RIB FAT	\$T	\$M
EPD	3.45	0.7	31	51	9	24.8	2.58	0.49	0.36	0.05	-0.007	89.25	19.8
ACC	0.31	0.49	0.47	0.46	0.12	--	0.17	0.28	0.48	0.55	0.46	--	--

97

**SWB 07622**

REG#: C1158681 DNA: DNA NE02901424 PV  
BRAND: SWB 7622 DOB: 3/25/22

**BOUNDS SWINGING B RANCH**

RED | HORNE



J & K 1001  
**MCALISTER 4521**

KENT MINDEMANN 95

\*\* FUSION 578/3

**CF LOVE SONG 421/7**

PRINCESS JACKIE 1325

SIMON CREEK 5/34  
SIMON CREEK 317

LASATER BEEFMASTER 3265  
KENT MINDEMANN 546

\*\* TABASCO 3018K10

\*\* PHANTOM'S DIAMOND 119/9

KING PIN BF950  
JACKLIN 94/10

- Mac combined with Love Song deliver the growth and the milk you want
- Top 10% WW, YW and \$T EPDs combine with Top 15% milk and Top 4% \$M
- Full Sisters topped the 2023 Genetic Investment Sale showing genetic balance

**PERFORMANCE TEST & GRADING SCORES**

Beginning WDA Ratio	97.70	Visual Grading Ratio	99.79
Gain Test ADG Ratio	103.15	TOTAL Ratio Score	100.75
Ultrasound Scan Ratio	108.11		

**INDIVIDUAL PERFORMANCE RECORDS**

	BW	WW	YW	SCROTAL AS OF 1/25/24	REA	%IMF	RIB FAT	RUMP FAT
RATIO	102.4	110			96.2	93.1	84.6	106.1
CONTEMP	30	18	1		10	10	8	6
ADJ. TRAIT	70	584	982	45	11.92	3.35	0.22	0.52

**EXPECTED PROGENY DIFFERENCES**

**ULTRASOUND EPDs**

**INDEXES**

	CE	BW	WW	YW	MILK	TM	MCE	SC	REA	%IMF	RIB FAT	\$T	\$M
EPD	3.04	0.6	44	65	11	32.6	3.71	1.17	0.5	0	-0.027	112.93	32.45
ACC	0.33	0.55	0.55	0.55	0.26	--	0.18	0.41	0.54	0.6	0.53	--	--

98

**SWB 01222**

REG#: C1157541 DNA: DNA NE02378296 PV  
BRAND: SWB 1222 DOB: 1/8/22

**BOUNDS SWINGING B RANCH**

RED | HORNE



J & K 1001  
**MCALISTER 4521**

KENT MINDEMANN 95

BULLET PROOF 864

**SWB DOTSY 76-10**

BLACK STACI 420

SIMON CREEK 5/34  
SIMON CREEK 317

LASATER BEEFMASTER 3265  
KENT MINDEMANN 546

CJ'S BANDELERO 960

\*\* OASIS 655

\*\* BLACK JACK 21  
MISS STACI 927

- McAlester and Dotsy are producing good looking animals with superior performance
- Big WW and YW EPD's in the Top 15% with the milk and maternal you demand
- Massive carcass numbers with big actual measures and EPD's in the Top 10%

**PERFORMANCE TEST & GRADING SCORES**

Beginning WDA Ratio	108.11	Visual Grading Ratio	99.55
Gain Test ADG Ratio	93.44	TOTAL Ratio Score	100.72
Ultrasound Scan Ratio	108.79		

**INDIVIDUAL PERFORMANCE RECORDS**

	BW	WW	YW	SCROTAL AS OF 1/25/24	REA	%IMF	RIB FAT	RUMP FAT
RATIO	94.3	106			95.2	125.2	122.6	110.9
CONTEMP	30	8	1		5	1	2	3
ADJ. TRAIT	76	517	1015	44	12.55	3.18	0.38	0.51

**EXPECTED PROGENY DIFFERENCES**

**ULTRASOUND EPDs**

**INDEXES**

	CE	BW	WW	YW	MILK	TM	MCE	SC	REA	%IMF	RIB FAT	\$T	\$M
EPD	1.95	1.4	40	60	6	26.0	3.66	1.03	0.69	0.13	-0.02	106.21	23.86
ACC	0.18	0.55	0.55	0.55	0.26	--	0.06	0.35	0.53	0.57	0.52	--	--

99

**CF 888/2**

REG#: C1165062 DNA: DNA 62521017210 PV  
BRAND: CF 888/2 DOB: 3/1/22

**COLLIER FARMS**

RED | HORNE



CF BROCK 450/3  
**CF BRAVADO 373/5**

\*\* BETTY'S LAST 45/1

J & T FARM JT616

**COLLIER FARMS CF 582/0**

COLLIER FARMS CF 326/5

\*\* VISION 905  
RED ESSENCE 129/07

BRYAN RANCH 126/6  
DIAMOND W 34/3

HIGH VELOCITY 61/11  
JT FIRST LADY 5/12

\*\* VISION 905  
TIGER'S DESTINY 602

- Outstanding maternal genetics on bottom back up the value for replacement females
- Low birth weight of 61 is ideal for virgin heifers in this moderate framed bull
- Stout test ratios of 121 and 120 prove growth against contemporaries

**PERFORMANCE TEST & GRADING SCORES**

Beginning WDA Ratio	121.01	Visual Grading Ratio	95.12
Gain Test ADG Ratio	120.72	TOTAL Ratio Score	100.35
Ultrasound Scan Ratio	95.92		

**INDIVIDUAL PERFORMANCE RECORDS**

	BW	WW	YW	SCROTAL AS OF 1/25/24	REA	%IMF	RIB FAT	RUMP FAT
RATIO	100	100	100		100	100	100	100
CONTEMP	1	1	1		1	1	1	1
ADJ. TRAIT	61	510	992	46	10.74	2.27	0.18	0.36

**EXPECTED PROGENY DIFFERENCES**

**ULTRASOUND EPDs**

**INDEXES**

	CE	BW	WW	YW	MILK	TM	MCE	SC	REA	%IMF	RIB FAT	\$T	\$M
EPD	4.48	-0.1	20	29	6	16.1	3.25	0.26	-0.24	-0.09	-0.047	50.05	16.26
ACC	0.31	0.43	0.51	0.44	0.14	--	0.17	0.32	0	0	0	--	--



100

CF 980/2

REG#: C1165344 DNA: DNA 62521017867 SV  
BRAND: CF 980/2 DOB: 3/21/22

COLLIER FARMS  
RED | HORNED



CF GALVESTON 414/5  
COLLIER FARMS CF 883/8

CJ SUPERIOR DREAM 1117

MEADOW OAK CROSSROADS M543

MOULTRIE MEADOWS M934

\*\* T V R 2117

NEW DIMENSION 805  
CF LOGAN'S LOVE 617/1

CF DREAM CATCHER 914  
\* MISS SUPERIOR 8  
\*\* CJ'S SOUL MAN 168  
MEADOW OAK CAMILLA 333

\*\* XCITE 497  
DUNKIN FARMS 0/049

- Versatile bull with soundness and attractive looks backed by breed greats
- Strong test ratios for WDA and ADG both in the 116+ range
- One of the biggest REA measures of sale with 14.39 and ratio 123, EPD in Top 25%

PERFORMANCE TEST & GRADING SCORES			
Beginning WDA Ratio	117.49	Visual Grading Ratio	94.14
Gain Test ADG Ratio	116.95	TOTAL Ratio Score	100.31
Ultrasound Scan Ratio	109.69		

INDIVIDUAL PERFORMANCE RECORDS									EXPECTED PROGENY DIFFERENCES								ULTRASOUND EPDs			INDEXES			
	BW	WW	YW	SCROTAL AS OF 1/25/24	REA	%IMF	RIB FAT	RUMP FAT		CE	BW	WW	YW	MILK	TM	MCE	SC	REA	%IMF	RIB FAT	\$T	\$M	
RATIO	103.4	100	95.7		123.7	117.1	120	113.8															
CONTEMP	11	11	10		1	4	4	3	EPD	2.85	1.2	20	33	7	17.3	2.82	0.35	0.42	-0.02	-0.02	57.95	13.02	
ADJ. TRAIT	75	547	951	42	14.39	2.54	0.24	0.33	ACC	0.31	0.5	0.47	0.39	0.19	--	0.18	0.29	0	0	0	--	--	

## TERMS AND CONDITIONS

**BIDDING:** Each animal will be sold to the highest bidder without reserve.

**BIDDING DISPUTE:** The Auctioneer in charge will settle any dispute as to bids, and his decision on such matters shall be final.

**CASH SALE:** All sales are for cash unless satisfactory credit arrangements, including any possible reservation of security interest by the seller, have been made with the seller prior to sale.

**BUYER'S RISK AT THE TIME OF SALE:** The risk of loss and injury of each animal passes to the buyer as soon as it is sold; however, it is the obligation of the seller to ensure that sold animals are fed and cared for free of charge to the buyer until loaded for shipment or until the expiration of 24 hours after the sale, whichever occurs sooner.

**CERTIFICATES OF REGISTRATION:** A transferred certificate of registration must be furnished by the seller free of charge to the buyer for each animal within 65 days following the later of either the date of sale or upon the receipt of full payment.

**HEALTH:** Health papers suitable for interstate shipment will be furnished on all animals.

**ANNOUNCEMENTS:** If there is any inconsistency in information in terms of the sales materials (e.g. sale catalog, supplemental sheets, sale day announcements) 1) sale day announcements will control over both the supplement sheet and the sale catalog, and 2) the supplement sheet will control over the sale catalog.

**IDENTIFICATION RESPONSIBILITIES:** 1) Prior to the sale, the seller must ensure that each animal has a readable permanent identification mark (tattoo, hot-iron brand or freeze brand) corresponding to its registration identification and 2) The buyer must check all permanent identification marks for accuracy upon possession and report any discrepancies to the seller immediately.

**OFFICIAL BBU INFORMATION:** All existing available official BBU information, including calf source, service sire and/or potential service sires (registration numbers) and performance data may be included in the final sales catalog.

**PEDIGREE, PERFORMANCE AND GENETIC INFORMATION GUARANTEES:** The seller guarantees to the buyer that: 1) the pedigree, performance data and genetic information, as represented in any sales materials (including sale catalog, supplemental sheet or sale day announcement), are accurate; and, 2) all information from the BBU database is accompanied by an accurately stated "as of" date. The absence in any sales materials of a specific designation on the pedigree of an animal does not establish that the animal in question is not a carrier of such genetic defect.

**BREEDING GUARANTEES:**

1) The seller guarantees that all animals are breeders, with the exception of: (a) calves under 12 months of age at the time of the sale; (b) animals shown after the sale has occurred (in such cases, the breeding guarantees, if any, will be those guarantees as agreed upon between the seller and the buyer); (c) animals who suffer injury or disease following the sale; (d) animals administered any super ovulation drug or growth hormone after purchase; and, (e) animals subjected to gross negligence by or willful misconduct on the part of the buyer.

2) Bulls eighteen (18) months or older are guaranteed by the seller to have passed a Bull Breeding Soundness Evaluation (BSE) and to have been certified a satisfactory

potential breeder by a licensed veterinarian with sixty (60) days prior to sale date. Results of the BSE must be reported on a fully completed official form and attached to the health papers required for the sale.

3) If within one-hundred twenty (120) days from the date of sale, the bull has failed to pass a BSE certified by a licensed veterinarian, buyer must send seller written notification of the failure of the test within one-hundred twenty (120) days from the date of sale and include the BSE test results. Within sixty (60) days after seller's notification of the failed BSE test, buyer and seller shall identify a mutually agreeable licensed veterinarian or technician certified by a licensed veterinarian to perform another BSE on the bull at the buyer's expense. The results of the test shall be deemed final and conclusive of this matter and binding on buyer and seller. If, in the opinion of said veterinarian or technician, the bull is unable to pass a BSE and be confirmed a satisfactory potential breeder, he shall so certify in writing to the seller and the buyer which shall include the official form used by the Society of Theriogenology or the official BBU BSE form. In such event the buyer may return the bull to the farm of seller, provided the bull is in good condition and in compliance with the health requirements of the seller's state, for a refund of the full purchase price. The acceptance of the refund of the full purchase price shall in any case be deemed full satisfaction and settlement of the matter. The seller and buyer shall bear equally all reasonable and necessary transportation expenses that are incurred in returning the animal to seller. **Unless otherwise agreed by the buyer and the seller, the seller makes no guarantees with respect to the ability to freeze semen.**

**PRIVILEGES OF RETURN OR ADJUSTMENT OPTIONS:**

1) With the exception of any applicable transportation expenses described herein, a seller shall never be liable to a buyer for an amount greater than the original selling price of any animal sold under these Sales Terms and Conditions.

2) Unless otherwise stated, all claims for adjustment or refund must be made in writing to the seller within 180 days following the sale of the animal in question.

3) If an animal is claimed to be a non-breeder, the animal may be returned to the seller if it is in a good condition and complies with the health requirements of the seller's state. At the option of the buyer, the seller may issue a credit to the buyer for use in a future purchase or provide an animal of equal value subject to the approval of buyer. If the buyer exercises either such option, the claim shall be deemed fully and satisfactorily resolved. However, in the event that the buyer requests a refund of the purchase price, the seller may, at its option, either issue a refund of the full purchase price or, shall have 180 days from the date the animal is returned to the seller's farm to conduct a trial to demonstrate the returned animal is a breeder. Refund of the full purchase price or demonstrated proof that the animal is a breeder during the test trial shall be deemed full satisfaction and settlement of the claim. Any expense incurred for transporting an animal claimed to be a non-breeder will be the responsibility of the buyer, except that the seller will be responsible for transportation costs in excess of the distance between the buyer's farm and the location where the sale took place. If the seller proves the animal to be a breeder, it will be the obligation of the buyer to take delivery of the animal and pay all transportation expenses.

4) If an animal is sold and subsequently becomes ineligible for registration under the rules of BBU for reasons other than incorrect parentage, the seller must make a satisfactory adjustment on the purchase price to the buyer, or at the option of the buyer, refund the purchase price upon the return of the animal to the farm of the seller.

5) If an animal (including the offspring of a pregnant recipient) is sold and through

parentage verification is proven to have incorrect parentage, as represented by the animal's certificate of registration, and for which correct parentage can be determined, the seller is obligated to make a satisfactory adjustment on the purchase price to the buyer or, at the buyer's option, refund the purchase price upon the return of the animal to the farm of the seller. Any claim for adjustment or refund under this paragraph must be made in writing to the seller on or before the first anniversary of the date of the sale.

6) Unless stated otherwise, all transportation expenses incurred will be the responsibility of the buyer, except that the seller will be responsible for transportation costs in excess of the distance between the buyer's farm and the location where the sale took place.

**GENETIC DEFECTS AND FACTORS: REQUIRED DISCLOSURES RELATING TO CERTAIN TEST RESULTS OR POTENTIAL CARRIER STATUS OF AN ANIMAL:**

1) In advance of any sales of an animal, the seller shall have the affirmative duty to notify any potential buyer of any test results in which an animal for sale has tested positive (under a test and at a laboratory approved by BBU) as a carrier of any genetic defect or genetic factor recognized by BBU.

**MISCELLANEOUS:**

1) The above terms and conditions of sale constitute a contract between the buyer and the seller and are equally binding upon both parties. Each sale or resale of an animal constitutes a separate transaction.

2) Neither BBU nor any director, officer, employee or representative of BBU or any of its related entities shall be liable in any way with respect to a transaction conducted under these Sales Terms and Conditions; nor shall BBU, its directors, officers, employees or representatives be responsible in any way for enforcing the terms and conditions of any agreement between a buyer and a seller. Each buyer and seller agree to hold BBU, its directors, officers, employees, representatives and related entities harmless from all damages, expenses, claims, losses and other liabilities associated with a transaction conducted under these Suggested Sales Terms and Conditions.

3) No sponsor, sale manager, or other person connected with the management of a sale shall be liable in any way with respect to transactions conducted under these Sales Terms and Conditions.

4) These sale terms and conditions and all rights, obligations and duties arising hereunder and all disputes arising hereunder will be construed in accordance with, and governed by, the laws of the state in which the sale occurs, without giving effect to such state's choice of law rules.

5) UNLESS OTHERWISE EXPRESSLY STATED IN THESE SALE TERMS AND CONDITIONS OR ANY OTHER WRITTEN AGREEMENT BETWEEN THE PARTIES RELATING TO THE SALE OR BEEFMASTER, BEEFMASTER ADVANTAGE, E6 OR UPGRADING CATTLE UNDER THESE SALE TERMS AND CONDITIONS, SELLER MAKES NO OTHER WARRANTIES, EXPRESS OR IMPLIED, INCLUDING ANY IMPLIED WARRANTY OF MERCHANTABILITY OR FITNESS FOR A PARTICULAR PURPOSE, EVEN IF SUCH PURPOSE IS KNOWN TO THE PARTIES. THE REMEDIES PROVIDED IN THESE SALE TERMS AND CONDITIONS ARE THE EXCLUSIVE REMEDIES OF THE BUYER, OR ANY PARTY CLAIMING THROUGH THE BUYER, AND UNDER NO CIRCUMSTANCES WILL THE SELLER BE LIABLE FOR ANY INCIDENTAL, INDIRECT, SPECIAL, CONSEQUENTIAL, PUNITIVE OR EXEMPLARY DAMAGES UNDER ANY INDEMNITY PROVISION OR OTHERWISE.

# NOTES



A series of horizontal lines for writing notes, consisting of 25 evenly spaced lines.





606 Tranquillo Drive  
Victoria, TX 77905



*Thank You*  
for Attending the  
**Advantage PLUS**  
**Beefmaster Bull Sale**