



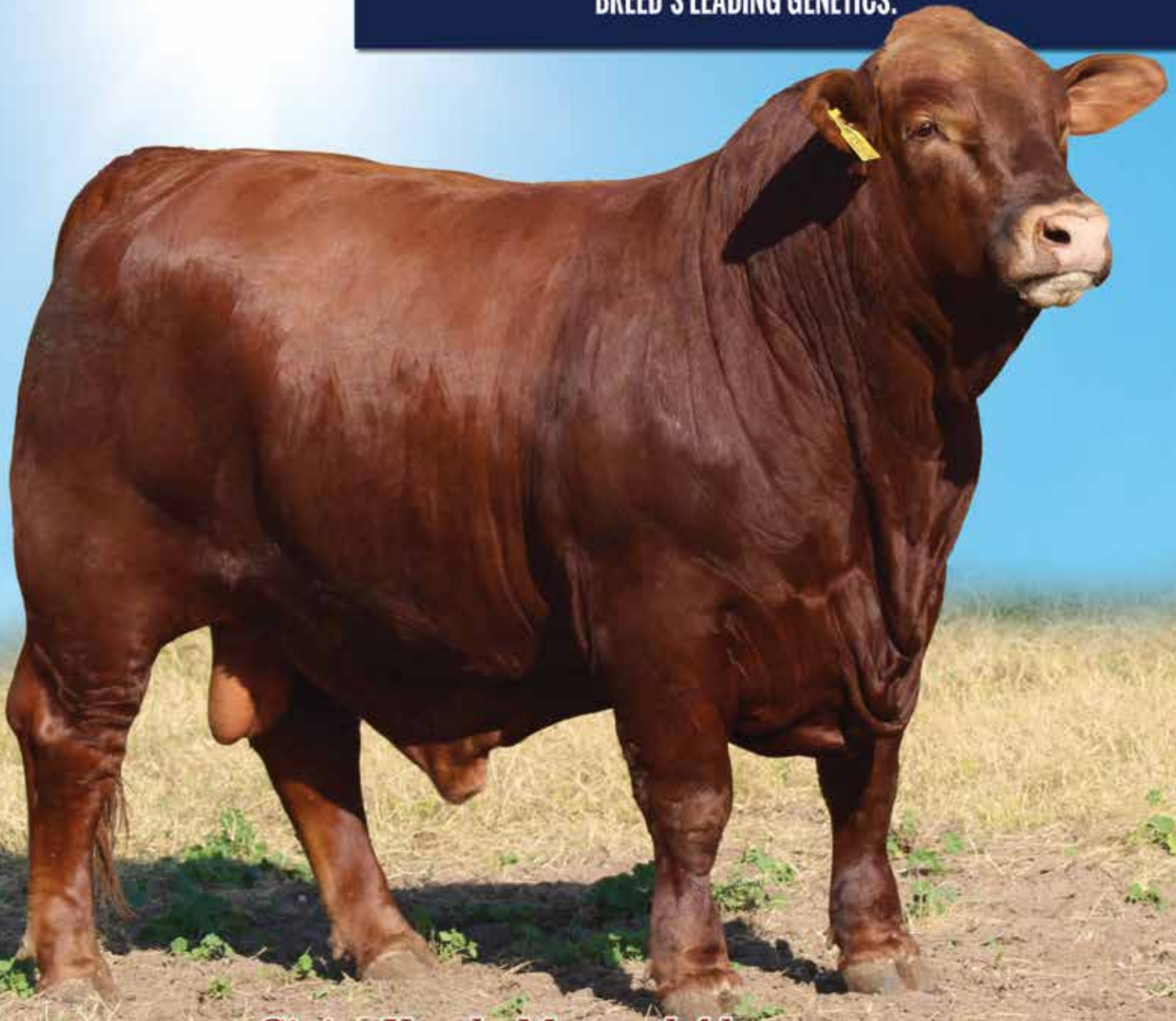
BEEFMASTER BULL SALE

2.25.2023

12:00 NOON | WASHINGTON COUNTY FAIRGROUNDS
BRENHAM, TEXAS

SELLING 100

**PERFORMANCE TESTED, RANGE READY, BEEFMASTER BULLS FROM THE
BREED'S LEADING GENETICS.**



Giving You the Maternal Advantage,
A WHOLE CALF CROP AT A TIME.

www.BEEFMASTERADVANTAGEPROGRAM.com



ADVANTAGE PLUS PRODUCERS

We are very pleased and honored that the following breeders have participated in the test and sale in a unified effort to provide you, the customer, with the very best genetics possible to enhance your program.

A Four Ranch

Alex & Elain Gonzalez
San Diego, TX

Bluebonnet Beefmasters

Matt & Summer Carlton
Franklin, TN

Campeche Cattle

Scott Rice
Houston, TX

Collier Farms

Mike & Rhonda Collier
Brenham, TX

Four L Beefmasters

Warren & Carrie Lowery
Katy, TX

HT Chapman Beefmasters

Tim Chapman
Rockport, TX

Three Crosses Ranch

R W Bush
De Ridder, LA

B and L Cattle

Bob & Linda Smith
Goliad, TX

Bounds Swinging B Ranch

Mackie & Norma Jean Bounds
Axtell, TX

Circle WL Beefmasters

Ken, Cheryl, Phillip & Ashley Walther
Giddings, TX

Cottage Farms

Rick & Scott Stonecipher
Jackson, TX

Golden Meadows Ranch

Chris & Mark Cooley
Cotulla, TX

J R V Cattle Company

Jason Vojacek
Cove, TX

V - Seven Beefmasters

Melvin & Marilyn Scherer, Jr.
Fannin, TX

Blue Ribbon Beefmasters

Will & Rayna Skaggs
De Leon, TX

CF Ranches

Brenham, TX

Cissna Ranch

John Cissna, Jr.
Mathis, TX

DK 5 Bar Ranch

David & Kachel Mullinax
Cypress, TX

H Bar Beefmasters

Greg & Amy Hendrix
Livingston, TX

Rancho Tres Hijos LP

Arthur & Nancy Epley, III
Tilden, TX

Walker Beefmasters

Ray Walker
Big Spring, TX

ACCOMMODATIONS

Best Western
979/251-7791

*Comfort Suites
979/421-8100

Holiday Inn Express
979/830-5331

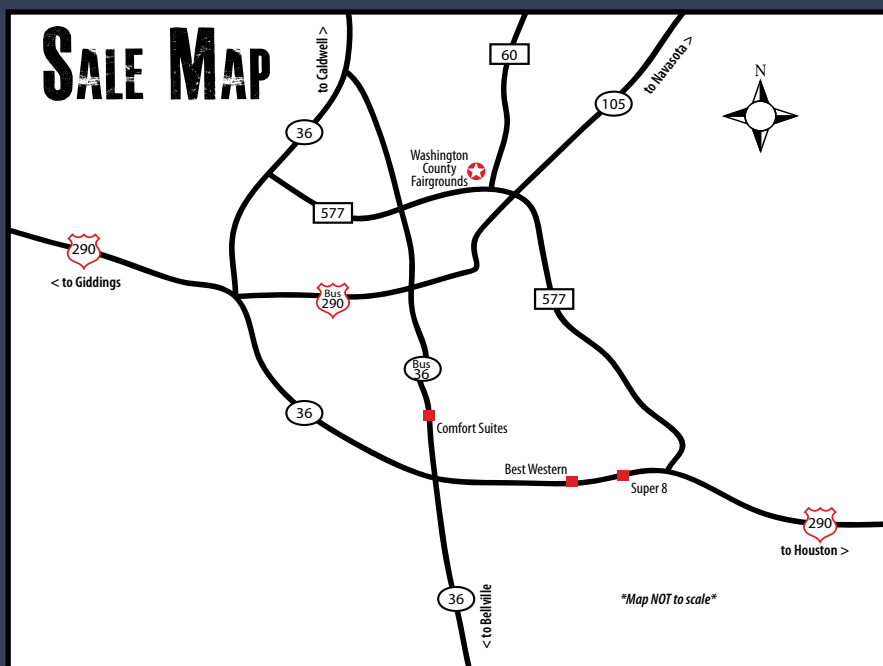
**Make reservations ASAP, rooms limited. Blocks are under CF
Performance Bull Sale.*

DVAuction
Broadcasting Real-Time Auctions

Never Miss An Auction Again!
Watch & Bid online for FREE!

Visit www.DVAuction.com
and Register Today!

For General Questions Please Contact Our Office:
(402) 316-5460 or support@dvauction.com





SCHEDULE

February 23rd - 24th

Cattle available for viewing all day through sale day

February 25th

Complimentary Breakfast & Lunch

Cattle available for viewing in morning

12:00 pm - Advantage *PLUS* Bull Sale

For more information, contact:

THE ADVANTAGE PLUS SALE TEAM

Trey Scherer 979/251-4175
treyscherer@yahoo.com

Anthony Mihalski 210/415-0888
aj1mihalski@aol.com

Bruce Robbins 210/861-5136
robbinscattle@att.net

Clay Howell 830/591-4497
clayhowellswingingb@yahoo.com

SALE DAY CONTACTS

Nolan Goebel - CF Herd Manager 361/275-1257

Mona Scherer - Sales Staff 979/203-4288

Noel Lopez - Int./Mexico Export
956/639-3929 *Para Espanol*

Jon Garza - BBU Int. Director
512/517-5163 *Para Espanol*

CATALOG DESIGNED BY

Cattle Solutions
Kyle Devoll • 979/820-8362
kyle@cattlesolutions.com
www.cattlesolutions.com



VIDEOS PRODUCED BY

Ideal Video Productions, LLC
Wade Fisher • 254/319-5349
wade@idealvideoproductions.com
www.idealvideoproductions.com



WELCOME TO THE ADVANTAGE PLUS PERFORMANCE BULL SALE!



Dear Friends and Cattlemen,

Welcome to the inaugural Advantage Plus Beefmaster Bull Sale, to be held Saturday, February 25th at the Washington County Fairgrounds in Brenham, Texas. This exciting new event will feature 100 performance-tested, range-ready bulls from some of the breed's leading genetics and programs. All bulls have been fully measured for carcass and growth traits, gain tested for ADG and WDA, fertility evaluated and Trich tested by a licensed veterinarian, and come with a full 180 day guarantee for fertility and soundness.

Over a decade ago, the Advantage Program was created to better offer, both registered and commercial cattlemen, the most modern, uniform, and productive MATERNAL Beefmaster genetics in the industry.

Currently, cattle producers from around the world are implementing these genetics into their herds with great success. From higher weight gain and improved carcass traits, to increased fertility and bred-in longevity, Advantage Program influenced females are providing ranchers with a higher value product to market at improved efficiency levels.

On February 25th, you will be given the unique opportunity to invest in these cutting-edge Advantage genetics and the future of your program. Study the catalog, view the video, and feel free to reach out with questions concerning the offering and how to implement the qualities offered by this set of bulls into your herd. Advantage Plus HERD SIREs will give you the maternal ADVANTAGE, a whole calf crop at a time!

Trey Scherer, Beefmaster Advantage Program



We are committed to insuring the animal you bought is genetically accurate and the performance data has the utmost integrity. All bulls have been DNA tested for parent verification and the confirmation abbreviation is listed by their DNA number in the catalog. We went another step further by implementing the breed's new Genomically Enhanced EPDs (GE-EPDs). Every bull in the sale possesses GE-EPDs, which takes accuracy values to a whole new level. With the Advantage Plus, you get what you paid for, and more!



WE ARE COMMITTED TO ACCURACY

Dedicated to YOUR Confidence

We believe in providing our customers with the most accurate information possible. Combining DNA information with a bull's pedigree and individual production data significantly increases the reliability of his EPDs. To better serve our customers, all bulls in this sale have genomic-enhanced EPDs powered by GGP DNA testing.

The table below shows the estimated number of progeny the DNA information adds to the reliability of the EPDs. For nearly all traits, the accuracy of the bulls' genomic-enhanced EPDs is equivalent to the data from an entire calf crop.

	CED	BW	WW	YW	MILK	HP	MARB	REA
Est. Progeny	21	13	19	22	14	10	9	11

The genomic-enhanced EPDs in this sale catalog are made possible through a partnership with Neogen GeneSeek. We've made the investment in the world's most-advanced DNA testing for seedstock cattle. Our aim is to help you buy the right bulls for your goals with the highest-possible confidence in their quality and knowledge of their potential.



DNA Abbreviations & Meanings

PV = parent verified to both sire and dam

SV = verified to sire only at this time

DV = verified to dam only at this time

PO = profile only - parentage undetermined at this time

Pending = DNA is being reviewed for various reasons or has not been processed at catalog time.

Benefits of GE-EPDs to cow/calf producers

Maternal GE-EPDs – Improve profits per cow:

- Verify calving-ease bulls, saving time, cost and stress when calving heifers.
- Identify bulls and cows with superior reproduction traits to improve cowherd fertility and maternal productivity.
- Better fertility improves conception rates, calving window and calf-crop uniformity.

Performance GE-EPDs – Optimize efficient returns:

- Produce cows that improve pounds weaned per exposed female.
- Produce cows for optimum growth for your grazing environment.
- Improve feed efficiency, producing heifers and cows that gain well on less feed and pass thrifty traits onto to their calves.

Quality GE-EPDs – More consistency of beef quality:

- Helps customers retaining calves, or selling into grids or value networks.
- Adds value and reputation quality in stockers or feeder calves.
- Predicts quality up front, saving years of valuable time, with less hassle than collecting carcass data.

*Note: SV, DV, PO, and Pending notations do not mean an animal can not or will not be parent verified but does mean that there is NO guarantee in the future that a sample can be obtained on a parent or can be verified to such.



1

CF 504/1

REG#: C1158371 DNA: 21121059058 PV
BRAND: CF 504/1 DOB: 2/6/21

**COLLIER FARMS
RED | HORNS**



CF BROCK 450/3
CF BRAVADO 373/5
** *BETTY'S LAST 45/1
TANK 376
CF BENGAL QUEEN 7352
CF BABY BENGAL 138/0

** VISION 905
RED ESSENCE 129/07
BRYAN RANCH 126/6
DIAMOND W 34/3
*DOUBLE L 7008
*FIVE V TANKS MOMMA VINSON 934
** *LOGAN 62M27
** *BENGAL BABY 93/05

Starting off the inaugural offering is one of the most elite individuals ever offered by Collier Farms. Bravado over Bengal Queen created the flush-mate sister to this bull which started of the Fall Advantage sale with a record setting sale price of \$61,000. Here is your opportunity to put those kinds of high selling, power genetics on the top side of your entire calf crop.

PERFORMANCE TEST & GRADING SCORES			
Beginning WDA Ratio	104.51	Visual Grading Ratio	119.32
Gain Test ADG Ratio	107.78	TOTAL Ratio Score	114.54
Ultrasound Scan Ratio	97.84		

INDIVIDUAL PERFORMANCE RECORDS								
	BW	WW	YW	SCROTAL AS OF 1/30/23	REA	%IMF	RIB FAT	RUMP FAT
RATIO	101	97	89		87	117	88	87
CONTEMP	13	13	13		13	13	13	13
ADJ. TRAIT	85	705	834	43	10.23	4.04	0.21	0.27

EXPECTED PROGENY DIFFERENCES								ULTRASOUND EPDs			INDEXES		
	CE	BW	WW	YW	MILK	TM	MCE	SC	REA	%IMF	RIB FAT	\$T	\$M
EPD	3.6	-0.3	26.3	28.1	9.3	22.4	3.0	0.5	-0.19	0.02	-0.044	49.95	29.39
ACC	0.32				0.27		0.17	0.48				--	--

2

CF 390/1

REG#: C1149987 DNA: 21121057893 SV
BRAND: CF 390/1 DOB: 2/1/21

**COLLIER FARMS
RED | POLLED**



CF BROCK 450/3
CF BRAVADO 373/5
** *BETTY'S LAST 45/1
SWB HEY KAT 111/11
COLLIER FARMS CF 851/5
*TRIPLE B 1-4

** VISION 905
RED ESSENCE 129/07
BRYAN RANCH 126/6
DIAMOND W 34/3
BULLET PROOF 864
MAGICAL PEARL 31/3
LOGAN'S LEADER 653/7
W FIVE 867

Bravado is putting an exclamation point after his name following this star-studded line up of high-profile herd sires. Lot 2 is the culmination of crossing some of the best of Collier Farms with the same from Swinging B Ranch. From Polled genetics to impeccable conformation and stellar individual performance, this one could easily be the next breed leading semen sire.

PERFORMANCE TEST & GRADING SCORES			
Beginning WDA Ratio	102.17	Visual Grading Ratio	118.66
Gain Test ADG Ratio	108.53	TOTAL Ratio Score	114.25
Ultrasound Scan Ratio	101.21		

INDIVIDUAL PERFORMANCE RECORDS								
	BW	WW	YW	SCROTAL AS OF 1/30/23	REA	%IMF	RIB FAT	RUMP FAT
RATIO	99	108	107		103	101	95	103
CONTEMP	11	11	8		8	8	8	8
ADJ. TRAIT	77	780	1028	40	12.4	3.55	0.2	0.33

EXPECTED PROGENY DIFFERENCES								ULTRASOUND EPDs			INDEXES		
	CE	BW	WW	YW	MILK	TM	MCE	SC	REA	%IMF	RIB FAT	\$T	\$M
EPD	4.2	-1.0	32.1	40.1	8.5	24.6	2.8	0.6	0.05	-0.04	-0.050	70.39	30.31
ACC	0.32				0.28		0.17	0.47				--	--

3

CF 501/1

REG#: C1158370 DNA: 21121059055 PV
BRAND: CF 501/1 DOB: 2/7/21

**COLLIER FARMS
RED | HORNS**



CF BROCK 450/3
CF BRAVADO 373/5
** *BETTY'S LAST 45/1
TANK 376
CF BENGAL QUEEN 7352
CF BABY BENGAL 138/0

** VISION 905
RED ESSENCE 129/07
BRYAN RANCH 126/6
DIAMOND W 34/3
*DOUBLE L 7008
*FIVE V TANKS MOMMA VINSON 934
** *LOGAN 62M27
** *BENGAL BABY 93/05

For years, Collier Farms has preached consistency of product right along with quality and this bull offers more of both. To prove this, lot 3's full flush-mate brothers sell as lots 1 and 9 in the offering. From muscling and structural design to legendary maternal cow family lines, here's a bull that will put the power and the pedigree into your herd.

PERFORMANCE TEST & GRADING SCORES			
Beginning WDA Ratio	87.91	Visual Grading Ratio	120.86
Gain Test ADG Ratio	106.59	TOTAL Ratio Score	114.12
Ultrasound Scan Ratio	100.62		

INDIVIDUAL PERFORMANCE RECORDS								
	BW	WW	YW	SCROTAL AS OF 1/30/23	REA	%IMF	RIB FAT	RUMP FAT
RATIO	101	98	91		96	115	100	103
CONTEMP	13	13	13		13	13	13	13
ADJ. TRAIT	85	707	853	44	11.29	3.97	0.24	0.32

EXPECTED PROGENY DIFFERENCES								ULTRASOUND EPDs			INDEXES		
	CE	BW	WW	YW	MILK	TM	MCE	SC	REA	%IMF	RIB FAT	\$T	\$M
EPD	3.3	-0.3	26.4	29.9	9.0	22.2	3.0	0.5	-0.07	0.01	-0.041	52.89	28.12
ACC	0.32				0.27		0.17	0.48				--	--

4

SWB 05421

REG#: C1136791 DNA: NE02302611 SV
BRAND: SWB 5421 DOB: 4/4/21

BOUNDS SWINGING B RANCH

RED | HORNS



NEW DIMENSION 805
SWB LUCKENBACH 08614
AUTUMN'S GIRL 31-10
RILEY 148/1
WALKER RW 658
WALKER 141

V - SEVEN 501
V - SEVEN 1673
BULLET PROOF 864
JAZZIE 293L55
** FUSION 578/3
*CF RAQUEL 933/9
*BLAU RANCH 592
** WALKER 453-

When looking to add capacity, muscle, fleshing ability and maternal traits to a high-performance carcass bull, this Luckenbach son delivers. Again, we see Swinging B greets like Bullet Proof and Jazzie combining with proven Collier Farms herd sires on bottom. Study hard the massive REA size, big time carcass EPD's and top 20% \$M maternal index.

PERFORMANCE TEST & GRADING SCORES			
Beginning WDA Ratio	114.25	Visual Grading Ratio	114.04
Gain Test ADG Ratio	111.66	TOTAL Ratio Score	113.63
Ultrasound Scan Ratio	112.13		

INDIVIDUAL PERFORMANCE RECORDS								EXPECTED PROGENY DIFFERENCES								ULTRASOUND EPDs			INDEXES				
	BW	WW	YW	SCROTAL AS OF 1/30/23	REA	%IMF	RIB FAT	RUMP FAT		CE	BW	WW	YW	MILK	TM	MCE	SC	REA	%IMF	RIB FAT	\$T	\$M	
RATIO	96	110	105		113	100	123	116															
CONTEMP	12	12	8		8	8	8	7	EPD	3.7	0.0	24.8	37.8	11.3	23.7	2.9	0.3	0.72	-0.03	-0.018	65.91	21.94	
ADJ. TRAIT	75	622	1176	39	15.78	3.63	0.54	0.79	ACC	0.31	0.62			0.27		0.17	0.46				--	--	

5

V7 101/21

REG#: C1148656 DNA: 41817023759 SV
BRAND: V7 101/21 DOB: 2/1/21

V - SEVEN

RED | HORNS



COLLIER FARMS CF 120/4
CF RANCHES CFR 967/7
COLLIER FARMS CF 566/3
CF COWBOY COOL 872/3
V - SEVEN 2131/18
CF LA VENTANA 655/1

** CF SUGAR BRITCHES 040
DIAMOND MAIDEN 1931/4
** TABASCO 3018K10
** BETTY'S LAST 45/1
NEW DIMENSION 805
ENDLESS OASIS 179
** VISION 905
THE HOMESTEAD 293P23

For years, V-Seven bulls and females have topped performance tests and elite production sales. Lot 5 offered here delivers some of the strongest genetics within the Collier Farms program. Donor dams like Diamond Maiden, Betty's Last, Endless Oasis and the 293 cow family, line the pedigree of this high REA bull pushing a top 35% \$M index. Don't miss the huge ADG ratio!

PERFORMANCE TEST & GRADING SCORES			
Beginning WDA Ratio	90.49	Visual Grading Ratio	116.46
Gain Test ADG Ratio	121.01	TOTAL Ratio Score	113.28
Ultrasound Scan Ratio	106.06		

INDIVIDUAL PERFORMANCE RECORDS								EXPECTED PROGENY DIFFERENCES								ULTRASOUND EPDs			INDEXES			
	BW	WW	YW	SCROTAL AS OF 1/30/23	REA	%IMF	RIB FAT	RUMP FAT		CE	BW	WW	YW	MILK	TM	MCE	SC	REA	%IMF	RIB FAT	\$T	\$M
RATIO	100	98	106		110	103	110	150														
CONTEMP	14	6	2		2	2	2	2	EPD	3.4	0.5	22.8	37.9	9.9	21.3	3.1	0.3	0.12	-0.16	-0.037	64.71	17.06
ADJ. TRAIT	71	557	976	42	14.09	3.5	0.23	0.36	ACC	0.31				0.24		0.17	0.45				--	--

6

SWB 05621

REG#: C1137398 DNA: NE02302681 PV
BRAND: SWB 5621 DOB: 4/10/21

BOUNDS SWINGING B RANCH

RED | HORNS



SUMMIT 5306
CAIN CCC BENTLEY 462F8
*DESTINY 4622
CF MASTERPIECE 685
SWB TOOTSIE 05618
SWB DOTSY 76/10

J & K 1001
M & M CATTLE COMPANY 0714
J & K 1001
*FRENZEL 971
L2 CAPTAIN JACK 43/07
** OASIS 655
BULLET PROOF 864
BLACK STACI 420

Massive yearling weight performance and big carcass measures just start to highlight the performance and visual appeal here. Study the overall depth of body and volume present in this solid dark red Bentley son. Lot 6 is the full brother to the Houston high selling bull SWB Inspiration, now in the Carr program. Top 15% \$T for an added bonus.

PERFORMANCE TEST & GRADING SCORES			
Beginning WDA Ratio	110.27	Visual Grading Ratio	114.04
Gain Test ADG Ratio	112.27	TOTAL Ratio Score	113.19
Ultrasound Scan Ratio	111.08		

INDIVIDUAL PERFORMANCE RECORDS								EXPECTED PROGENY DIFFERENCES								ULTRASOUND EPDs			INDEXES			
	BW	WW	YW	SCROTAL AS OF 1/30/23	REA	%IMF	RIB FAT	RUMP FAT		CE	BW	WW	YW	MILK	TM	MCE	SC	REA	%IMF	RIB FAT	\$T	\$M
RATIO	90	95	101		105	111	127	124														
CONTEMP	13	12	8		8	8	8	7	EPD	1.1	1.6	27.7	56.2	11.2	25.0	3.2	0.2	0.51	0.19	-0.003	99.51	11.54
ADJ. TRAIT	81	534	1135	40	14.56	4.03	0.56	0.84	ACC	0.31				0.25		0.17	0.48				--	--

7

CF 490/1

REG#: C1150045 DNA: 21121059044 PV
BRAND: CF 490/1 DOB: 1/3/21

COLLIER FARMS
RED | HORNS



CF DREAM CATCHER 914

** L2 CAPTAIN SUGAR 12/02
** OASIS 655

WB SOLUTION 67/6

** LOGAN'S BENGAL BABY 134/0

** *LOGAN 62M27
** *BENGAL BABY 93/05
** *WPR'S THE TOTAL PACKAGE 7595
** LASATER BEEFMASTER 3670

WALLEN PRAIRIE RANCH WPR'S 1352

COLLIER FARMS CF 754/6

PINE SPRINGS 358

LASATER 7015
PINE SPRINGS RANCH 737

Solution has become accustomed to taking the main stage throughout the breed and this high-performance son is just another reason why. Study the massive \$-index in the top 5% for both \$T and \$M. From great looks to blow away weaning and yearling performance, this herd sire is one to put at the top of your list.

PERFORMANCE TEST & GRADING SCORES			
Beginning WDA Ratio	126.64	Visual Grading Ratio	113.82
Gain Test ADG Ratio	113.17	TOTAL Ratio Score	113.16
Ultrasound Scan Ratio	95.06		

INDIVIDUAL PERFORMANCE RECORDS								
	BW	WW	YW	SCROTAL AS OF 1/30/23	REA	%IMF	RIB FAT	RUMP FAT
RATIO	85	119	118		97	89	92	89
CONTEMP	15	16	15		15	15	15	15
ADJ. TRAIT	91	862	1171	48	11.91	2.86	0.24	0.33

EXPECTED PROGENY DIFFERENCES								ULTRASOUND EPDs			INDEXES		
	CE	BW	WW	YW	MILK	TM	MCE	SC	REA	%IMF	RIB FAT	\$T	\$M
EPD	-0.4	2.6	47.2	69.0	9.4	33.0	2.8	0.9	-0.03	-0.08	-0.033	118.81	29.44
ACC	0.33				0.28		0.18	0.47				--	--

8

SWB 05721

REG#: C1137399 DNA: NE02302614 SV
BRAND: SWB 5721 DOB: 4/10/21

BOUNDS SWINGING B RANCH
RED | HORNS



MCLESTER 4521

J & K 1001
KENT MINDEMANN 95

SWB PETERBILT 08718

GYPSY LADY 33

CF DREAM CATCHER 914
CAINS MS CASEY 4-35 938X
CAIN 537
FOUNDATION BEEFMASTERS 610

CATALYST 729

RANCHO TRES HIJOS LP RTH 97

*RANCHO TRES HIJOS LP 70/3

DUKE'S SON 45/9
** RANCHO TRES HIJOS LP 12/4

Number guys will want to circle this lot and focus closely on the breed leading performance data in this Peterbilt son. Peterbilt on Catalyst puts breed trait leaders together to result in a top 1% \$T index and top 10% \$M index. Imagine what a bull with these kinds of EPD's, carcass traits, actual gain performance and impeccable phenotype can do for your program!

PERFORMANCE TEST & GRADING SCORES			
Beginning WDA Ratio	114.54	Visual Grading Ratio	112.72
Gain Test ADG Ratio	117.48	TOTAL Ratio Score	113.06
Ultrasound Scan Ratio	109.54		

INDIVIDUAL PERFORMANCE RECORDS								
	BW	WW	YW	SCROTAL AS OF 1/30/23	REA	%IMF	RIB FAT	RUMP FAT
RATIO	90	123	120		110	95	118	102
CONTEMP	13	12	8		8	8	8	7
ADJ. TRAIT	81	697	1345	42	15.33	3.45	0.52	0.69

EXPECTED PROGENY DIFFERENCES								ULTRASOUND EPDs			INDEXES		
	CE	BW	WW	YW	MILK	TM	MCE	SC	REA	%IMF	RIB FAT	\$T	\$M
EPD	0.5	1.4	51.5	88.5	13.0	38.7	2.6	1.0	0.88	-0.04	-0.019	153.24	27.94
ACC	0.31				0.27		0.17	0.48				--	--

9

CF 409/1

REG#: C1161818 DNA: 21121057874 PV
BRAND: CF 409/1 DOB: 2/25/21

COLLIER FARMS
LIGHT RED | HORNS



CF BROCK 450/3

** VISION 905
RED ESSENCE 129/07

CF BRAVADO 373/5

** *BETTY'S LAST 45/1

BRYAN RANCH 126/6
DIAMOND W 34/3
*DOUBLE L 7008
*FIVE V TANKS MOMMA VINSON 934

TANK 376

CF BENGAL QUEEN 7352

CF BABY BENGAL 138/0

** *LOGAN 62M27
** *BENGAL BABY 93/05

We've seen his flush-mate brothers in lots 1 and 3, but now it's time for this powerhouse to shine. From balanced moderation to amazingly thick muscling and super sound structure, this bull could be the best designed beef animal in the 2023 offering. The only 3 flush-mate sisters of this bull ever sold, commanded prices of \$61,000, \$40,000 and \$30,000!

PERFORMANCE TEST & GRADING SCORES			
Beginning WDA Ratio	115.16	Visual Grading Ratio	112.72
Gain Test ADG Ratio	115.27	TOTAL Ratio Score	112.49
Ultrasound Scan Ratio	105.40		

INDIVIDUAL PERFORMANCE RECORDS								
	BW	WW	YW	SCROTAL AS OF 1/30/23	REA	%IMF	RIB FAT	RUMP FAT
RATIO	97	107	100		100	100	100	100
CONTEMP	3	3	1		1	1	1	1
ADJ. TRAIT	80	534	1054	42	12.78	4	0.25	0.42

EXPECTED PROGENY DIFFERENCES								ULTRASOUND EPDs			INDEXES		
	CE	BW	WW	YW	MILK	TM	MCE	SC	REA	%IMF	RIB FAT	\$T	\$M
EPD	3.8	-0.2	30.1	36.7	8.8	23.9	2.9	0.7	0.01	-0.07	-0.042	63.81	29.27
ACC	0.32				0.27		0.17	0.48				--	--

10

GMR MR SLICK HOMBRE 730

REG#: C1151377 DNA: NE01727634 SV
BRAND: GMR 730 DOB: 2/27/21

GOLDEN MEADOWS RANCH LLC

RED | HORNS



SLICK 16
SLICK RED 426/2

COLLIER FARMS CF 105/0

DELIVERANCE DOUBLES DOWN 715/9

GOLDEN MEADOWS RANCH GMR MS 250

*GOLDEN MEADOWS RANCH 112

COLLIER FARMS 774/7
V - SEVEN 1723

SEVEN-C ANDERSON CATTLE 007
** IMPRESSIVE MANDATE 04-2

DELIVERANCE 44
*COLLIER FARMS 680/6

** FUSION 578/3
GOLDEN MEADOWS RANCH 01

Golden Meadows Ranch continues to strategically employ some of the best genetics around to consistently produce absolute brutes like this herd bull prospect. From overall size, bone and mass, this bull bows to none in the offering. In addition, he delivers one of the highest milk numbers around and combines strong carcass with a top 15% \$M index.

PERFORMANCE TEST & GRADING SCORES			
Beginning WDA Ratio	104.04	Visual Grading Ratio	115.58
Gain Test ADG Ratio	113.52	TOTAL Ratio Score	112.46
Ultrasound Scan Ratio	97.98		

INDIVIDUAL PERFORMANCE RECORDS								
	BW	WW	YW	SCROTAL AS OF 1/30/23	REA	%IMF	RIB FAT	RUMP FAT
RATIO	106	103	100		100	100	100	100
CONTEMP	17	3	1		1	1	1	1
ADJ. TRAIT	70	651	982	44	11.59	3.44	0.2	0.27

EXPECTED PROGENY DIFFERENCES								ULTRASOUND EPDs			INDEXES		
	CE	BW	WW	YW	MILK	TM	MCE	SC	REA	%IMF	RIB FAT	\$T	\$M
EPD	4.3	-0.2	23.3	35.6	11.1	22.8	3.3	0.7	-0.18	-0.03	-0.040	62.23	22.31
ACC	0.31				0.27		0.17	0.45				--	--

11

CF 311/1

REG#: C1158153 DNA: 9518035522 PV
BRAND: CF 311/1 DOB: 1/17/21

COLLIER FARMS

RED | HORNS



CF DREAM CATCHER 914

WB SOLUTION 67/6

** LOGAN'S BENGAL BABY 134/0

CF RIPTIDE 875/3

CF BEBE 795/7

SUGAR SHANA 645-6

** L2 CAPTAIN SUGAR 12/02
** OASIS 655

** *LOGAN 62M27
** *BENGAL BABY 93/05

** *TABASCO 3018K10
*CF RAQUEL 933/9

** BLACK JACK 21
LITTLE V 7-98

- Dam is the great CF Bebe donor - 2019 Houston Res. Supreme Champion
- Full flush-mate brother to new semen sire CF Unico 219/1.
- Outstanding carcass measures with good \$T and top 3% \$M indexes

PERFORMANCE TEST & GRADING SCORES			
Beginning WDA Ratio	116.80	Visual Grading Ratio	113.16
Gain Test ADG Ratio	110.18	TOTAL Ratio Score	112.45
Ultrasound Scan Ratio	105.41		

INDIVIDUAL PERFORMANCE RECORDS								
	BW	WW	YW	SCROTAL AS OF 1/30/23	REA	%IMF	RIB FAT	RUMP FAT
RATIO	103	100	105		93	117	163	143
CONTEMP	4	4	4		4	4	4	4
ADJ. TRAIT	75	651	1021	42	12.63	4.07	0.44	0.43

EXPECTED PROGENY DIFFERENCES								ULTRASOUND EPDs			INDEXES		
	CE	BW	WW	YW	MILK	TM	MCE	SC	REA	%IMF	RIB FAT	\$T	\$M
EPD	3.0	0.8	38.0	47.5	10.8	29.7	2.6	0.7	-0.17	-0.02	-0.017	81.88	33.89
ACC	0.33				0.27		0.17	0.48				--	--

12

JRV 3/21

REG#: C1146743 DNA: 102120010942 SV
BRAND: JRV 3/21 DOB: 3/20/21

J R V CATTLE COMPANY

RED MOT UL | DEHORND



CF RIPTIDE 875/3

CF ALEJANDRO 690/8

CF OLIVIA 292/4

JESSE 120-7

COLLIER FARMS CF 924/5

*CF RANCHES 220/5

** *TABASCO 3018K10
*CF RAQUEL 933/9

** *LOGAN 62M27
OLIVER RANCH 304

QUASAR 991
JEZABELLE 62J8

SRALLA'S SUCCESS 34
COLLIER FARMS 228

- JRV Cattle continues to produce right at the top of the season's bull sales
- CF Alejandro back over Vision and donor Miss Magic Coffee was a no miss
- Low birth weight and outstanding carcass measures

PERFORMANCE TEST & GRADING SCORES			
Beginning WDA Ratio	104.10	Visual Grading Ratio	114.92
Gain Test ADG Ratio	111.03	TOTAL Ratio Score	112.12
Ultrasound Scan Ratio	101.63		

INDIVIDUAL PERFORMANCE RECORDS								
	BW	WW	YW	SCROTAL AS OF 1/30/23	REA	%IMF	RIB FAT	RUMP FAT
RATIO	105	93	100		100	100	100	100
CONTEMP	3	3	1		1	1	1	1
ADJ. TRAIT	70	548	729		8.51	4.05	0.22	0.3

EXPECTED PROGENY DIFFERENCES								ULTRASOUND EPDs			INDEXES		
	CE	BW	WW	YW	MILK	TM	MCE	SC	REA	%IMF	RIB FAT	\$T	\$M
EPD	3.6	0.0	18.4	30.2	9.3	18.4	3.4	0.2	0.07	0.04	-0.022	53.26	15.60
ACC	0.30				0.27		0.17	0.46				--	--

13

H BAR 1106

REG#: C1148957 DNA: 9518034188 SV
BRAND: H-1106 DOB: 1/15/21

H-BAR BEEFMASTERS

RED | HORNS



CF COWBOY COOL 872/3
COLLIER FARMS CF 644/8
PRINCESS JACKIE 1325
**FUSION 578/3
SEVEN-C ANDERSON CATTLE 829/18
SEVEN-C ANDERSON CATTLE 553/14

NEW DIMENSION 805
ENDLESS OASIS 179
KING PIN BF950
JACKLIN 94/10
**TABASCO 3018K10
** PHANTOM'S DIAMOND 119/9
SLICK 16
CF LA VENTANA 655/1

- Another high performance and high grading bull from the H Bar program
- Low birth weight and calving ease combined with huge YW and milk EPD
- Nice \$M coming from legendary maternal genetics of Fusion and Princess Jackie

PERFORMANCE TEST & GRADING SCORES			
Beginning WDA Ratio	115.27	Visual Grading Ratio	113.16
Gain Test ADG Ratio	102.69	TOTAL Ratio Score	112.02
Ultrasound Scan Ratio	110.14		

INDIVIDUAL PERFORMANCE RECORDS								
	BW	WW	YW	SCROTAL AS OF 1/30/23	REA	%IMF	RIB FAT	RUMP FAT
RATIO	111	99	104		117	91	94	96
CONTEMP	18	13	9		9	9	9	9
ADJ. TRAIT	65	580	1073	42	15	3.69	0.3	0.45

EXPECTED PROGENY DIFFERENCES								ULTRASOUND EPDs			INDEXES		
	CE	BW	WW	YW	MILK	TM	MCE	SC	REA	%IMF	RIB FAT	\$T	\$M
EPD	6.6	-1.5	20.1	37.9	11.1	21.1	3.2	0.2	0.18	-0.15	-0.041	64.92	16.57
ACC	0.17				0.12		0.03	0.24				--	--

14

CF 488/1

REG#: C1163944 DNA: 21121059042 PENDING
BRAND: CF 488/1 DOB: 2/17/21

COLLIER FARMS

RED | HORNS



NEW DIMENSION 805
COLLIER FARMS CF 204/5
*CF LEADING LADY 530/6
SLICK 16
CF SWEET 16 501/6
OLIVER RANCH 304

V - SEVEN 501
V - SEVEN 1673
**LOGAN 62M27
** LADY LEGACY 338/12
COLLIER FARMS 774/7
V - SEVEN 1723
OLIVER RANCH 665/95
OLIVER RANCH 02

- Dam Sweet 16 is the mother of past high selling H Bar bull Tidal Wave
- Deep bodied and extra smooth made - perfect for broody females
- Good calving ease and milk combine for a Top 5% \$M index

PERFORMANCE TEST & GRADING SCORES			
Beginning WDA Ratio	86.86	Visual Grading Ratio	119.10
Gain Test ADG Ratio	97.31	TOTAL Ratio Score	111.77
Ultrasound Scan Ratio	99.83		

INDIVIDUAL PERFORMANCE RECORDS								
	BW	WW	YW	SCROTAL AS OF 1/30/23	REA	%IMF	RIB FAT	RUMP FAT
RATIO	108	99	88		100	100	100	100
CONTEMP	8	8	8		1	1	1	1
ADJ. TRAIT	78	631	851	41.5	10.74	2.42	0.21	0.25

EXPECTED PROGENY DIFFERENCES								ULTRASOUND EPDs			INDEXES		
	CE	BW	WW	YW	MILK	TM	MCE	SC	REA	%IMF	RIB FAT	\$T	\$M
EPD	2.0	0.4	24.1	23.2	9.9	21.9	2.7	0.4	0.03	-0.17	-0.036	39.25	28.77
ACC	PE				PE		PE	PE				--	--

15

CF 330/1

REG#: C1150005 DNA: 9518035584 PV
BRAND: CF 330/1 DOB: 3/22/21

COLLIER FARMS

RED | HORNS



**LOGAN 62M27
COLLIER FARMS CF 585/6
CJ SUPERIOR DREAM 1117
**PAINTED TIGER 3-390
EMS TIGRESS III 133
LADY JANE 524/0

QUASAR 991
JEZABELLE 62J8
CF DREAM CATCHER 914
*MISS SUPERIOR 8
** PAINTED WARRIOR 0026
** DUNKIN FARMS 1-126
WARRIOR III 0073
LADY CHRISTINA 4/15

- Easily one of the best looking, most conformationally correct bulls anywhere
- Miss Superior 8 and Tigrress III give you a double shot of Painted Tiger
- Undeniable fertility, longevity, and consistency abound in this herd bull

PERFORMANCE TEST & GRADING SCORES			
Beginning WDA Ratio	97.71	Visual Grading Ratio	115.80
Gain Test ADG Ratio	105.69	TOTAL Ratio Score	111.45
Ultrasound Scan Ratio	100.51		

INDIVIDUAL PERFORMANCE RECORDS								
	BW	WW	YW	SCROTAL AS OF 1/30/23	REA	%IMF	RIB FAT	RUMP FAT
RATIO	98	88	94		99	100	96	120
CONTEMP	6	6	5		5	5	5	5
ADJ. TRAIT	83	463	948	43	11.8	3.72	0.24	0.36

EXPECTED PROGENY DIFFERENCES								ULTRASOUND EPDs			INDEXES		
	CE	BW	WW	YW	MILK	TM	MCE	SC	REA	%IMF	RIB FAT	\$T	\$M
EPD	1.9	1.6	15.4	29.4	9.0	16.7	3.0	0.2	-0.10	-0.07	-0.035	50.81	9.26
ACC	0.31				0.31		0.18	0.47				--	--

16

SWB 01721

REG#: C1136783 DNA: NEO2969010 SV
BRAND: SWB 1721 DOB: 2/12/21

BOUNDS SWINGING B RANCH

RED | HORNS



NEW DIMENSION 805
SWB LUCKENBACH 08614
AUTUMN'S GIRL 31-10
WITTENBURG 314
SWINGING B SWB R03016
W FIVE 314

V - SEVEN 501
V - SEVEN 1673
BULLET PROOF 864
JAZZIE 293L55
DREAM MAN 509
PEOPLES1265
W FIVE 842
W FIVE 782

- Peterbilt delivers the power and the carcass data time and again
- Macalester and Dream catcher bring the muscle and growth
- High \$T and \$M indexes with a massive 15" REA and good IMF

PERFORMANCE TEST & GRADING SCORES			
Beginning WDA Ratio	108.23	Visual Grading Ratio	110.08
Gain Test ADG Ratio	125.77	TOTAL Ratio Score	111.40
Ultrasound Scan Ratio	109.46		

INDIVIDUAL PERFORMANCE RECORDS									EXPECTED PROGENY DIFFERENCES								ULTRASOUND EPDs			INDEXES			
	BW	WW	YW	SCROTAL AS OF 1/30/23	REA	%IMF	RIB FAT	RUMP FAT		CE	BW	WW	YW	MILK	TM	MCE	SC	REA	%IMF	RIB FAT	\$T	\$M	
RATIO	96	108	100		100	100	100	100															
CONTEMP	12	5	1		1	1	1	1	EPD	4.8	0.0	22.6	32.2	8.9	20.2	3.8	0.0	0.40	-0.23	-0.028	53.86	19.28	
ADJ. TRAIT	75	580	1114	38	15.15	3.52	0.42	0.52	ACC	PE	I	I	I	PE	I	PE	PE	I	I	I	--	--	

17

CF 482/1

REG#: C1150038 DNA: 21121059036 PV
BRAND: CF 482/1 DOB: 1/31/21

COLLIER FARMS

RED | HORNS



TANK 376
COLLIER FARMS CF 290/7
INFINITE OASIS 020
**TABASCO 3018K10
COLLIER FARMS CF 568/3
**BETTY'S LAST 45/1

*DOUBLE L 7008
*FIVE V TANKS MOMMA VINSON 934
L2 CAPTAIN LUCEY 116/01
** OASIS 655
** RED TIGER 9075
JUNGLE SPICE 786
BRYAN 126/6
DIAMOND W 34/3

- Sire CF 290/7 is a full brother to H Bar's Arsenal herd sire
- Tabasco and Betty's last put some of the best CF maternal together
- Longevity and fertility are bred in with solid test performance

PERFORMANCE TEST & GRADING SCORES			
Beginning WDA Ratio	100.13	Visual Grading Ratio	113.16
Gain Test ADG Ratio	124.25	TOTAL Ratio Score	111.14
Ultrasound Scan Ratio	94.87		

INDIVIDUAL PERFORMANCE RECORDS									EXPECTED PROGENY DIFFERENCES								ULTRASOUND EPDs			INDEXES			
	BW	WW	YW	SCROTAL AS OF 1/30/23	REA	%IMF	RIB FAT	RUMP FAT		CE	BW	WW	YW	MILK	TM	MCE	SC	REA	%IMF	RIB FAT	\$T	\$M	
RATIO	109	95	105		98	87	127	114															
CONTEMP	15	16	15		15	15	15	15	EPD	3.1	-0.5	21.9	43.8	8.2	19.2	2.6	0.5	-0.27	-0.23	-0.027	73.32	11.92	
ADJ. TRAIT	71	684	1048	42	11.98	2.8	0.33	0.42	ACC	0.31	I	I	I	0.30	I	0.18	0.48	I	I	I	--	--	

18

GMR MACHO SUERTE 732

REG#: C1151491 DNA: NEO1727636 PV
BRAND: GMR 732 DOB: 3/3/21

GOLDEN MEADOWS RANCH LLC

RED MOT UL | HORNS



** CF SUGAR BRITCHES 040
CF CORTEZ 374/5
** LOGAN'S BENGAL BABY 134/0
COLLIER FARMS CF 316/4
GIPSON BROTHERS GBC 802
COLLIER FARMS CF 801/3

** L2 CAPTAIN SUGAR 12/02
** OASIS 655
** *LOGAN 62M27
** *BENGAL BABY 93/05
** *FUSION 578/3
COLLIER FARMS CF 289/0
NEW DIMENSION 805
ENDLESS OASIS 179

- CF Cortez is the genetic full brother to Solution proving consistency
- Huge REA measure of 15.45" and strong growth in WW and YW
- High milk EPD and big \$M index in the top 10% of breed

PERFORMANCE TEST & GRADING SCORES			
Beginning WDA Ratio	115.55	Visual Grading Ratio	111.84
Gain Test ADG Ratio	108.53	TOTAL Ratio Score	110.99
Ultrasound Scan Ratio	102.98		

INDIVIDUAL PERFORMANCE RECORDS									EXPECTED PROGENY DIFFERENCES								ULTRASOUND EPDs			INDEXES			
	BW	WW	YW	SCROTAL AS OF 1/30/23	REA	%IMF	RIB FAT	RUMP FAT		CE	BW	WW	YW	MILK	TM	MCE	SC	REA	%IMF	RIB FAT	\$T	\$M	
RATIO	92	107	100		100	100	100	100															
CONTEMP	17	2	1		1	1	1	1	EPD	1.4	1.4	27.6	36.1	10.4	24.2	2.0	0.5	0.05	-0.12	-0.023	61.41	24.77	
ADJ. TRAIT	80	688	1087	44	15.45	2.42	0.24	0.38	ACC	0.31	I	I	I	0.28	I	0.17	0.46	I	I	I	--	--	

19

JRV 42/21

REG#: C1148242 DNA: 102120011706 PV
BRAND: JRV 42/21 DOB: 4/8/21

J R V CATTLE COMPANY RED MOT UL | DEHORND



CF RIPTIDE 875/3
CF ALEJANDRO 690/8
CF OLIVIA 292/4
COLLIER FARMS 807/9
COLLIER FARMS CF 164/7
*WALKER 029

**TABASCO 3018K10
*CF RAQUEL 933/9
**LOGAN 62M27
OLIVER RANCH 304
**LOGAN 62M27
** PENELOPE 293J11
*BLAU RANCH 592
** WALKER 2/65

- Easily the most massive boned and deep made bulls of the 2023 offering
- Here is the kind of bull that will add capacity, volume and look to his heifers
- Giant WW and YW ratios pushing his EPD's up and \$M in top 15%

PERFORMANCE TEST & GRADING SCORES			
Beginning WDA Ratio	115.04	Visual Grading Ratio	110.30
Gain Test ADG Ratio	122.75	TOTAL Ratio Score	110.78
Ultrasound Scan Ratio	97.90		

INDIVIDUAL PERFORMANCE RECORDS								
	BW	WW	YW	SCROTAL AS OF 1/30/23	REA	%IMF	RIB FAT	RUMP FAT
RATIO	85	114	111		100	92	121	114
CONTEMP	3	3	2		2	2	2	2
ADJ. TRAIT	87	673	1114	39	12.66	2.94	0.4	0.4

EXPECTED PROGENY DIFFERENCES								ULTRASOUND EPDs			INDEXES		
	CE	BW	WW	YW	MILK	TM	MCE	SC	REA	%IMF	RIB FAT	\$T	\$M
EPD	1.0	2.3	32.8	45.2	7.5	23.9	3.0	0.5	0.13	-0.05	-0.014	77.70	22.37
ACC	0.30				0.26		0.17	0.47				--	--

20

CF 408/1

REG#: C1164313 DNA: 21121057871 PENDING
BRAND: CF 408/1 DOB: 3/11/21

COLLIER FARMS RED | SCURS



EMS RING OF FIRE 130
MR CJ 49/17
*CJ'S DIAMOND EMERALD 7/13
E AND E RANCH 97
EE MISS MEGA 224
HILLTOP RANCH 981-3

BONFIRE 8038
EMS COLOR ME SUGAR 811
CF DREAM CATCHER
*CJ'S DIAMOND OF SOUL 509
MEGATRON 572
TIGER VANNA 601
CF SUGAR BEAR 933
*HILLTOP RANCH 989/1

- An impressive designed scurred POLLED bull with lots of looks
- Strong carcass data in both REA and IMF enhance profile
- Nice balance of both \$T and \$M indexes in top 30%

PERFORMANCE TEST & GRADING SCORES			
Beginning WDA Ratio	102.46	Visual Grading Ratio	114.48
Gain Test ADG Ratio	103.54	TOTAL Ratio Score	110.72
Ultrasound Scan Ratio	99.83		

INDIVIDUAL PERFORMANCE RECORDS								
	BW	WW	YW	SCROTAL AS OF 1/30/23	REA	%IMF	RIB FAT	RUMP FAT
RATIO	100	100	100		100	100	100	100
CONTEMP	1	1	1		1	1	1	1
ADJ. TRAIT	73	679	1062	46	12.9	3.67	0.29	0.42

EXPECTED PROGENY DIFFERENCES								ULTRASOUND EPDs			INDEXES		
	CE	BW	WW	YW	MILK	TM	MCE	SC	REA	%IMF	RIB FAT	\$T	\$M
EPD	3.5	0.3	28.9	48.6	10.0	24.4	2.5	0.5	-0.03	-0.04	-0.032	84.35	19.60
ACC	PE			PE	PE		PE	PE	PE	PE	PE	--	--

21

CF 316/1

REG#: C1163882 DNA: 9518035527 PV
BRAND: CF 316/1 DOB: 2/2/21

COLLIER FARMS RED | HORNS



NEW DIMENSION 805
CF COWBOY COOL 872/3
ENDLESS OASIS 179
CF RIPTIDE 875/3
CF BEBE 795/7
SUGAR SHANA 645-6

V - SEVEN 501
V - SEVEN 1673
** INFINITY 120/96
** OASIS 655
**TABASCO 3018K10
*CF RAQUEL 933/9
** BLACK JACK 21
LITTLE V 7-98

- Cowboy Cool hits big with CF Bebe for a massive made brute
- Donor dam was the 2019 Houston Res. Supreme Champion
- Huge WW performance and monster REA combine for top 5% \$M

PERFORMANCE TEST & GRADING SCORES			
Beginning WDA Ratio	108.31	Visual Grading Ratio	110.30
Gain Test ADG Ratio	114.77	TOTAL Ratio Score	110.35
Ultrasound Scan Ratio	108.37		

INDIVIDUAL PERFORMANCE RECORDS								
	BW	WW	YW	SCROTAL AS OF 1/30/23	REA	%IMF	RIB FAT	RUMP FAT
RATIO	87	110	109		117	87	93	93
CONTEMP	4	4	4		4	4	4	4
ADJ. TRAIT	89	714	1056	39	15.87	3.03	0.25	0.28

EXPECTED PROGENY DIFFERENCES								ULTRASOUND EPDs			INDEXES		
	CE	BW	WW	YW	MILK	TM	MCE	SC	REA	%IMF	RIB FAT	\$T	\$M
EPD	1.4	1.5	37.3	45.4	9.4	28.0	2.0	0.2	0.35	-0.24	-0.044	77.07	30.50
ACC	0.31				0.27		0.17	0.49				--	--

22

CF 329/1

REG#: C1150004 DNA: 9518035585 PV
BRAND: CF 329/1 DOB: 3/18/21

CF RANCHES
RED MOT UL | HORNS



**LOGAN 62M27 QUASAR 991
COLLIER FARMS CF 585/6 JEZABELLE 62J8
CJ SUPERIOR DREAM 1117 CF DREAM CATCHER 914
**FUSION 578/3 *MISS SUPERIOR 8
**TABASCO 3018K10
COLLIER FARMS CF 930/9 **PHANTOM'S DIAMOND 119/9
**DUSTY COTTON 977/1 **CLASSIC COTTON 89/135
MISS DUSTY 45/7

- Pedigree is stuffed full of breed greats like Logan and Fusion
- Miss Superior 8 and Dusty Cotton give you a shot at maternal excellence
- Strong carcass performance with 12.5" REA and IMF over 3.5%

PERFORMANCE TEST & GRADING SCORES			
Beginning WDA Ratio	104.47	Visual Grading Ratio	112.72
Gain Test ADG Ratio	108.53	TOTAL Ratio Score	110.33
Ultrasound Scan Ratio	101.29		

INDIVIDUAL PERFORMANCE RECORDS									EXPECTED PROGENY DIFFERENCES								ULTRASOUND EPDs			INDEXES			
	BW	WW	YW	SCROTAL AS OF 1/30/23	REA	%IMF	RIB FAT	RUMP FAT		CE	BW	WW	YW	MILK	TM	MCE	SC	REA	%IMF	RIB FAT	\$T	\$M	
RATIO	101	96	99		104	95	116	93															
CONTEMP	6	6	5		5	5	5	5	EPD	2.9	0.6	16.3	27.6	10.1	18.3	3.2	0.3	-0.26	-0.09	-0.032	47.38	14.66	
ADJ. TRAIT	81	509	1002	38	12.45	3.54	0.29	0.28	ACC	0.32				0.31		0.18	0.47				--	--	

23

CF 332/1

REG#: C1150008 DNA: 9518035582 SV
BRAND: CF 332/1 DOB: 3/20/21

COLLIER FARMS
RED MOT UL | HORNS



**LOGAN 62M27 QUASAR 991
COLLIER FARMS CF 585/6 JEZABELLE 62J8
CJ SUPERIOR DREAM 1117 CF DREAM CATCHER 914
W FIVE 117 W FIVE 842
W FIVE 407 W FIVE 931
W FIVE 235 WITTENBURG 961
W FIVE 039

- Larger framed bull with extra growth and performance
- Big time WW and YW ratios with YW of over 1200 lbs.
- Good carcass scan and Big \$T and \$M indexes in top 15%

PERFORMANCE TEST & GRADING SCORES			
Beginning WDA Ratio	126.73	Visual Grading Ratio	105.23
Gain Test ADG Ratio	140.97	TOTAL Ratio Score	110.15
Ultrasound Scan Ratio	97.19		

INDIVIDUAL PERFORMANCE RECORDS									EXPECTED PROGENY DIFFERENCES								ULTRASOUND EPDs			INDEXES		
	BW	WW	YW	SCROTAL AS OF 1/30/23	REA	%IMF	RIB FAT	RUMP FAT		CE	BW	WW	YW	MILK	TM	MCE	SC	REA	%IMF	RIB FAT	\$T	\$M
RATIO	94	129	122		102	82	108	100														
CONTEMP	6	6	5		5	5	5	5	EPD	3.0	2.0	41.0	62.5	8.7	29.2	3.6	0.6	0.02	-0.21	-0.035	106.06	24.33
ADJ. TRAIT	87	681	1226	44	12.23	3.03	0.27	0.3	ACC	0.31				0.29		0.17	0.45				--	--

24

CF 387/1

REG#: C1149984 DNA: 21121057892 SV
BRAND: CF 387/1 DOB: 3/20/21

COLLIER FARMS
RED | HORNS



CF BRAVADO 373/5 **VISION 905
**BETTY'S LAST 45/1 RED ESSENCE 129/07
**TABASCO 3018K10 BRYAN RANCH 126/6
COLLIER FARMS 421/6 **RED TIGER 9075
LINCEDUM 812-1 JUNGLE SPICE 786
**COLORADO 226-6
**MAURICE HARRELL 244

- Bravado and Tabasco genetically hit every time for conformation
- Granddam Lincecum 812-1 lasted for 15 years in CF program – longevity!
- Huge REA of 14.8" with high WW of 782 and TOP 1% \$M index

PERFORMANCE TEST & GRADING SCORES			
Beginning WDA Ratio	99.76	Visual Grading Ratio	110.30
Gain Test ADG Ratio	113.52	TOTAL Ratio Score	109.16
Ultrasound Scan Ratio	106.25		

INDIVIDUAL PERFORMANCE RECORDS									EXPECTED PROGENY DIFFERENCES								ULTRASOUND EPDs			INDEXES		
	BW	WW	YW	SCROTAL AS OF 1/30/23	REA	%IMF	RIB FAT	RUMP FAT		CE	BW	WW	YW	MILK	TM	MCE	SC	REA	%IMF	RIB FAT	\$T	\$M
RATIO	103	126	100		100	100	100	100														
CONTEMP	2	2	1		1	1	1	1	EPD	5.8	-0.7	45.0	41.2	7.6	30.1	3.0	0.5	-0.01	-0.14	-0.050	70.97	46.32
ADJ. TRAIT	73	782	1021	40	14.83	3.19	0.25	0.3	ACC	0.31				0.31		0.18	0.47				--	--

25

DK 5 B 19/1

REG#: C1159200 DNA: 21121059597 SV
BRAND: DK5 19/1 DOB: 2/14/21

DK 5 BAR RANCH

RED | HORNS



EL PATRON 686/3
COLLIER FARMS CF 964/7

FOREVER SASSY 292/2

** FUSION 578/3

COLLIER FARMS CF 259/6

ROCKIN H SECRET TIGER 1/11

** LOGAN 62M27
HARMONY 62K11

LOGAN XL 2019
*CF SASSY 8993
** TABASCO 3018K10
** PHANTOM'S DIAMOND 119/9

** PAINTED TIGER 3-390
I'VE GOT A SECRET 72/04

- Sire CF 964/7 brings in El Patron and Sassy donor for consistency
- Extremely long made bull with great looks and design
- Strong REA with a high IMF over 4% and \$M in top 30%

PERFORMANCE TEST & GRADING SCORES			
Beginning WDA Ratio	89.73	Visual Grading Ratio	109.64
Gain Test ADG Ratio	129.74	TOTAL Ratio Score	109.06
Ultrasound Scan Ratio	103.67		

INDIVIDUAL PERFORMANCE RECORDS								
	BW	WW	YW	SCROTAL AS OF 1/30/23	REA	%IMF	RIB FAT	RUMP FAT
RATIO	99	100	109		105	111	100	113
CONTEMP	2	2	2		2	2	2	2
ADJ. TRAIT	78	607	786	41	12.15	4.03	0.21	0.43

EXPECTED PROGENY DIFFERENCES								ULTRASOUND EPDs			INDEXES		
	CE	BW	WW	YW	MILK	TM	MCE	SC	REA	%IMF	RIB FAT	\$T	\$M
EPD	5.7	-1.4	16.4	28.5	11.8	19.9	2.7	0.7	-0.15	0.05	-0.035	50.79	19.30
ACC	0.15				0.13		0.03	0.23				--	--

26

V7 102/21

REG#: C1148671 DNA: 41817023763 PO
BRAND: V7 102/21 DOB: 1/15/21

V - SEVEN

RED | HORNS



SAN GABRIEL BEEFMASTERS 45/4

SAN GABRIEL BEEFMASTERS 12/8

SAN GABRIEL BEEFMASTERS 29/5

RED BULL 511

V - SEVEN 2174/8

TRIPLE B 01

** INFINITY 120/96
PAINTED OASIS 680

CF SUGAR BEAR 933
PLAY GIRL 031/13
NEW DIMENSION 805
HS HEAVENLY HATTIE 62T14

LOGAN'S LEADER 653/7
FUSIONS GRAND DESIGN 956/8

- Infinity and Painted Oasis go to work with Red Bull 511 and Logan
- High WW and YW ratios with a moderate birthweight
- Outstanding IMF pushing the 5% mark and top 40% \$ indexes

PERFORMANCE TEST & GRADING SCORES			
Beginning WDA Ratio	109.48	Visual Grading Ratio	109.64
Gain Test ADG Ratio	109.58	TOTAL Ratio Score	109.04
Ultrasound Scan Ratio	103.84		

INDIVIDUAL PERFORMANCE RECORDS								
	BW	WW	YW	SCROTAL AS OF 1/30/23	REA	%IMF	RIB FAT	RUMP FAT
RATIO	103	110	113		96	113	126	151
CONTEMP	14	2	2		2	2	2	2
ADJ. TRAIT	69	534	1052	41	10.28	4.91	0.39	0.56

EXPECTED PROGENY DIFFERENCES								ULTRASOUND EPDs			INDEXES		
	CE	BW	WW	YW	MILK	TM	MCE	SC	REA	%IMF	RIB FAT	\$T	\$M
EPD	4.1	0.2	25.1	45.3	11.5	24.1	3.2	-0.2	-0.23	0.06	-0.017	79.07	15.88
ACC	0.31				0.24		0.17	0.44				--	--

27

SWB 08621

REG#: C1156196 DNA: NE02378666 PV
BRAND: SWB 8621 DOB: 1/3/21

BOUNDS SWINGING B RANCH

RED | HORNS



*DOC 2D-0C81

808 GAME DAY

*CAIN 5123

BULLET PROOF 864

SWB DOTSY 76-10

BLACK STACI 420

** L BAR 5502
PHALLON 512/7

REACTION OF 956 729 253
CASEY 0-47
CJ'S BANDELERO 960
** OASIS 655

** BLACK JACK 21
MISS STACI 927

- Game Day is known for EPD performance data and it shows here
- Donor dam SWB Dotsy is one of the most proven donors in the breed
- TOP 7% for both \$T and \$M index with a massive 4.20% IMF

PERFORMANCE TEST & GRADING SCORES			
Beginning WDA Ratio	110.95	Visual Grading Ratio	107.43
Gain Test ADG Ratio	117.18	TOTAL Ratio Score	108.97
Ultrasound Scan Ratio	109.58		

INDIVIDUAL PERFORMANCE RECORDS								
	BW	WW	YW	SCROTAL AS OF 1/30/23	REA	%IMF	RIB FAT	RUMP FAT
RATIO	95	116	112		105	114	124	107
CONTEMP	7	2	2		2	2	2	2
ADJ. TRAIT	76	627	1142	40	13.7	4.2	0.26	0.33

EXPECTED PROGENY DIFFERENCES								ULTRASOUND EPDs			INDEXES		
	CE	BW	WW	YW	MILK	TM	MCE	SC	REA	%IMF	RIB FAT	\$T	\$M
EPD	1.5	1.0	44.0	67.6	9.4	31.4	2.1	0.8	0.19	0.08	-0.031	118.45	27.82
ACC	0.31				0.31		0.18	0.47				--	--

28

CWL 28/1

REG#: C1148440 DNA: 21121059701 SV
BRAND: CWL 28/1 DOB: 3/28/21

**CIRCLE WL BEEFMASTERS
DARK RED | HORNS**



CF BRAVADO 373/5
** *BETTY'S LAST 45/1
EMS FIRE AND SMOKE 352
CIRCLE WL CWL 89/8
ANDERSON BEEFMASTERSANS 146

** VISION 905
RED ESSENCE 129/07
BRYAN RANCH 126/6
DIAMOND W 34/3
BONFIRE 8038
MISS SUGARBELLE 62L12
PANHANDLE DREAM 830A
MILES 408

- Bravado with Fire and Smoke produced one of the best-looking bulls of offering
- Solid dark red, long made, great underline and THICK
- Solid individual performance ratios with a big time \$M index in top 6%

PERFORMANCE TEST & GRADING SCORES			
Beginning WDA Ratio	97.54	Visual Grading Ratio	112.28
Gain Test ADG Ratio	106.04	TOTAL Ratio Score	108.85
Ultrasound Scan Ratio	98.97		

INDIVIDUAL PERFORMANCE RECORDS								EXPECTED PROGENY DIFFERENCES								ULTRASOUND EPDs			INDEXES				
	BW	WW	YW	SCROTAL AS OF 1/30/23	REA	%IMF	RIB FAT	RUMP FAT		CE	BW	WW	YW	MILK	TM	MCE	SC	REA	%IMF	RIB FAT	\$T	\$M	
RATIO	102	106	100		100	100	100	100															
CONTEMP	4	3	1		1	1	1	1	EPD	4.1	-0.8	27.1	26.7	6.8	20.4	2.9	0.3	-0.15	-0.09	-0.046	46.40	29.23	
ADJ. TRAIT	70	561	906	38	11.87	3.46	0.19	0.26	ACC	0.31				0.25		0.17	0.46				--	--	

29

CF 319/1

REG#: C1150022 DNA: 9518035530 PV
BRAND: CF 319/1 DOB: 2/6/21

**COLLIER FARMS
RED | HORNS**



CF SO BRO 758/6
** LOGAN'S BENGAL BABY 134/0
** VISION 905
CF ROSIE 3374
** *COLLIER FARMS 76/5

CF DREAM CATCHER 914
** L2 CAPTAIN SUGAR 12/02
** OASIS 655
** *LOGAN 62M27
** *BENGAL BABY 93/05
** *LOGAN 62M27
** *PENELOPE 293J11
LA MEJOR CATTLE CO 9112
LINCECUM 183-5

- One of the ranch favorites for design, performance and disposition
- Sire CF So Bro is a full brother to Solution and dam Rosie is current donor
- Easy fleshing and soggy made with nice carcass numbers and solid \$M

PERFORMANCE TEST & GRADING SCORES			
Beginning WDA Ratio	100.68	Visual Grading Ratio	113.16
Gain Test ADG Ratio	94.81	TOTAL Ratio Score	108.76
Ultrasound Scan Ratio	99.98		

INDIVIDUAL PERFORMANCE RECORDS								EXPECTED PROGENY DIFFERENCES								ULTRASOUND EPDs			INDEXES			
	BW	WW	YW	SCROTAL AS OF 1/30/23	REA	%IMF	RIB FAT	RUMP FAT		CE	BW	WW	YW	MILK	TM	MCE	SC	REA	%IMF	RIB FAT	\$T	\$M
RATIO	90	100	94		94	95	85	97														
CONTEMP	12	12	10		9	9	9	9	EPD	2.8	1.0	18.1	21.0	6.0	15.0	3.2	0.4	-0.18	-0.07	-0.036	36.44	17.16
ADJ. TRAIT	80	617	948	48	12.44	3.35	0.22	0.29	ACC	0.32				0.30		0.18	0.48				--	--

30

CF 496/1

REG#: C1150054 DNA: 21121059050 SV
BRAND: CF 496/1 DOB: 2/18/21

**COLLIER FARMS
RED | HORNS**

MR CJ 13/16
CJ'S DIAMOND REFLECTION 1203
** CF SUGAR BRITCHES 040
BAILEY FARM 1515
EMS SHESA JEZABELLE 989

BONFIRE 8038
EMS COLOR ME SUGAR 811
CF DREAM CATCHER 914
*CJ'S DIAMOND OF SOUL 509
** L2 CAPTAIN SUGAR 12/02
** OASIS 655
** *PAINTED TIGER 3-390
JEZABELLE 62J8

- Dam is a donor in the CF program bringing in Sugar Britches and Jezabelle
- Stout yearling weight performance and big milk EPD
- Big raw-boned bull with strong growth and WW pushing 700 lbs.

PERFORMANCE TEST & GRADING SCORES			
Beginning WDA Ratio	103.69	Visual Grading Ratio	110.52
Gain Test ADG Ratio	113.77	TOTAL Ratio Score	108.31
Ultrasound Scan Ratio	92.07		

INDIVIDUAL PERFORMANCE RECORDS								EXPECTED PROGENY DIFFERENCES								ULTRASOUND EPDs			INDEXES			
	BW	WW	YW	SCROTAL AS OF 1/30/23	REA	%IMF	RIB FAT	RUMP FAT		CE	BW	WW	YW	MILK	TM	MCE	SC	REA	%IMF	RIB FAT	\$T	\$M
RATIO	101	96	106		91	87	100	132														
CONTEMP	4	3	3		3	3	3	3	EPD	4.1	-0.1	18.9	43.2	11.3	20.7	2.2	0.1	-0.27	-0.04	-0.030	74.71	9.37
ADJ. TRAIT	85	699	1018	40	10.96	2.85	0.21	0.41	ACC	0.31				0.29		0.17	0.47				--	--

31

SWB 08921

REG#: C1155180 DNA: NE02302715 PV
BRAND: SWB 8921 DOB: 2/24/21

BOUNDS SWINGING B RANCH

RED | HORNS



*DOC 2D-0C81
808 GAME DAY
*CAIN 5123
SMITH & WESSON 43-09
PLAY IT AGAIN 226
PAINTED SPRINGS 805

** L BAR 5502
PHALLON 5127
REACTION OF 956 729 253
CASEY 0-47
BULLET PROOF 864
MARISSA 22/7
** INFINITY 120/96
MISS CJ 446

- Game Day on Play It Again puts performance on style
- Cocky made bull with a square hip and proven donor dam
- Big time EPD's for BW, WW, YW, \$T and \$M indexes with a 4.41% IMF

PERFORMANCE TEST & GRADING SCORES			
Beginning WDA Ratio	116.00	Visual Grading Ratio	106.33
Gain Test ADG Ratio	117.79	TOTAL Ratio Score	108.31
Ultrasound Scan Ratio	104.97		

INDIVIDUAL PERFORMANCE RECORDS								
	BW	WW	YW	SCROTAL AS OF 1/30/23	REA	%IMF	RIB FAT	RUMP FAT
RATIO	101	113	100		100	100	100	100
CONTEMP	5	5	1		1	1	1	1
ADJ. TRAIT	76	593	1194	42.5	11.74	4.41	0.25	0.57

EXPECTED PROGENY DIFFERENCES								ULTRASOUND EPDs			INDEXES		
	CE	BW	WW	YW	MILK	TM	MCE	SC	REA	%IMF	RIB FAT	\$T	\$M
EPD	3.0	0.0	38.4	55.4	9.6	28.8	2.4	1.0	0.14	-0.05	-0.038	96.06	29.94
ACC	0.31				0.29		0.17	0.47				--	--

32

CF 331/1

REG#: C1150006 DNA: 9518035583 DV
BRAND: CF 331/1 DOB: 1/15/21

COLLIER FARMS

RED MOT UL | HORNS



V - SEVEN 301
V - SEVEN 601/16
V - SEVEN 1624
EMS FIRE HOUSE 261
COLLIER FARMS CF 753/6
AURORA 1405

V - SEVEN 3/0
V - SEVEN 1423
CARLTON'S 011
SEVEN-C ANDERSON CATTLE 911
BONFIRE 8038
EMS STYLISH JEZZY 849
KING PIN BF950
BAILEY FARM BF1235

- Very big ribbed bull with lots of muscling and natural power
- Tough made and ready for heavy service on either heifers or mature cows
- Good WW and YW measures with strong \$M and donor granddam Aurora

PERFORMANCE TEST & GRADING SCORES			
Beginning WDA Ratio	103.02	Visual Grading Ratio	113.16
Gain Test ADG Ratio	78.59	TOTAL Ratio Score	108.23
Ultrasound Scan Ratio	108.60		

INDIVIDUAL PERFORMANCE RECORDS								
	BW	WW	YW	SCROTAL AS OF 1/30/23	REA	%IMF	RIB FAT	RUMP FAT
RATIO	106	102	99		110	114	113	146
CONTEMP	8	8	8		8	8	8	8
ADJ. TRAIT	73	650	976	40	13.93	3.95	0.27	0.48

EXPECTED PROGENY DIFFERENCES								ULTRASOUND EPDs			INDEXES		
	CE	BW	WW	YW	MILK	TM	MCE	SC	REA	%IMF	RIB FAT	\$T	\$M
EPD	4.3	-0.3	15.9	21.2	9.5	17.4	2.8	0.1	0.10	0.03	-0.035	38.10	18.25
ACC	0.31				0.26		0.17	0.44				--	--

33

CAMPEC 23/1

REG#: C1148766 DNA: 62521017299 SV
BRAND: Campeche 23/1 DOB: 2/5/21

CAMPECHE CATTLE

RED | DEHORND



CF TROUBADOR 879/3
COLLIER FARMS CF 486/8
CLEMENTINE 293L23
COLLIER FARMS CF 651/1
TRIPLE B 5-9
COLLIER FARMS CF 404/1

NEW DIMENSION 805
*CF RAQUEL 933/9
** CAVALIER 19/5
SIERRA 91/99
NEW DIMENSION 805
*COLLIER FARMS 166/8
POLLED FUSION 999/7
COLLIER FARMS 528/9

- Fluid and stylish made bull with plenty of front extension and flex
- Massive ADG test ratio of 125 and visual score ratio of 110
- A double shot of New Dimension increases milk and puts \$M in top 15%

PERFORMANCE TEST & GRADING SCORES			
Beginning WDA Ratio	90.16	Visual Grading Ratio	110.08
Gain Test ADG Ratio	125.45	TOTAL Ratio Score	108.00
Ultrasound Scan Ratio	93.83		

INDIVIDUAL PERFORMANCE RECORDS								
	BW	WW	YW	SCROTAL AS OF 1/30/23	REA	%IMF	RIB FAT	RUMP FAT
RATIO	92	104	100		100	100	100	100
CONTEMP	3	2	1		1	1	1	1
ADJ. TRAIT	78	534	779	39	10.02	3.54	0.17	0.28

EXPECTED PROGENY DIFFERENCES								ULTRASOUND EPDs			INDEXES		
	CE	BW	WW	YW	MILK	TM	MCE	SC	REA	%IMF	RIB FAT	\$T	\$M
EPD	1.7	1.1	26.5	35.7	11.1	24.3	3.1	0.3	0.16	0.04	-0.032	63.24	23.87
ACC	0.14	0.40	0.36	0.29	0.13	0.21	0.03	0.20				--	--

34

SWB 05921

REG#: C1164343 DNA: NE02302649 PV
BRAND: SWB 5921 DOB: 4/11/21

BOUNDS SWINGING B RANCH

RED | HORNS



** CF SUGAR BRITCHES 040

** L2 CAPTAIN SUGAR 12/02

** OASIS 655

7C PICANTE 12/17

COLLIER FARMS 711/1

** *FUSION 578/3

**COLLIER FARMS 479/9

COLLIER FARMS 619/9

** *LOGAN 62M27

** *BENGAL BABY 93/05

SKINNER'S RAFTER S SRS 13/18

SKINNER'S RAFTERS 7/8

LOWERY 5/216

ORR 533

- Sire 7C Picante was a previous high selling bull at the CF Performance Bull Sale
- Maternal greats galore with Oasis, Clementine, and Bengal Baby in lineage
- Solid growth numbers with high milk EPD, good IMF and nice \$M index

PERFORMANCE TEST & GRADING SCORES

Beginning WDA Ratio	108.71	Visual Grading Ratio	107.65
Gain Test ADG Ratio	119.02	TOTAL Ratio Score	107.95
Ultrasound Scan Ratio	98.15		

INDIVIDUAL PERFORMANCE RECORDS

	BW	WW	YW	SCROTAL AS OF 1/30/23	REA	%IMF	RIB FAT	RUMP FAT
RATIO	92	107	100		78	106	125	107
CONTEMP	13	12	8		8	8	8	7
ADJ. TRAIT	79	605	1126	40	10.85	3.84	0.55	0.73

EXPECTED PROGENY DIFFERENCES

ULTRASOUND EPDs

INDEXES

	CE	BW	WW	YW	MILK	TM	MCE	SC	REA	%IMF	RIB FAT	\$T	\$M
EPD	1.7	1.8	24.4	38.3	10.4	22.6	2.7	0.4	-0.34	-0.01	-0.006	65.71	18.00
ACC	0.32				0.33		0.19	0.50				--	--

35

CF 177

REG#: C1153500 DNA: 102120045946 PV
BRAND: cf 177 DOB: 3/10/21

COTTAGE FARM

RED | HORNS



** VISION 905

** *LOGAN 62M27

** PENELOPE 293J11

CF BROCK 450/3

RED ESSENCE 129/07

** L2 CAPTAIN SUGAR 12/02

RED ANNA 2/04

CF ADRENALINE 170

** INFINITY 120/96

** OASIS 655

COLLIER FARMS CF 744/6

H M S 1845/3

** SYNERGY 84/95

** THORNBUSH T129

- A long-made, heavy-boned bull with great extension, level top, and muscling
- Brock back over L2 genetics and the great T129 cow was a no miss mating
- Stout WW and YW individual ratios with an outstanding calving ease and good \$M

PERFORMANCE TEST & GRADING SCORES

Beginning WDA Ratio	100.50	Visual Grading Ratio	110.08
Gain Test ADG Ratio	114.77	TOTAL Ratio Score	107.73
Ultrasound Scan Ratio	91.48		

INDIVIDUAL PERFORMANCE RECORDS

	BW	WW	YW	SCROTAL AS OF 1/30/23	REA	%IMF	RIB FAT	RUMP FAT
RATIO	111	116	111		100	100	100	100
CONTEMP	6	6	3		1	1	1	1
ADJ. TRAIT	71	621	968	47.5	11.17	3.62	0.25	0.29

EXPECTED PROGENY DIFFERENCES

ULTRASOUND EPDs

INDEXES

	CE	BW	WW	YW	MILK	TM	MCE	SC	REA	%IMF	RIB FAT	\$T	\$M
EPD	4.9	-1.5	20.2	19.8	6.1	16.2	2.7	0.1	-0.47	-0.06	-0.039	34.43	23.82
ACC	0.30			0.57	0.29		0.18	0.49	0.42	0.45	0.41	--	--

36

CFR 280/1

REG#: C1149977 DNA: 9518022566 SV
BRAND: CF 280/1 DOB: 1/1/21

CF RANCHES

LIGHT RED | HORNS

CF COWBOY COOL 872/3

NEW DIMENSION 805

ENDLESS OASIS 179

V7 705/17

V - SEVEN 1836

TIO 4/162

V - SEVEN 1406

TIGER J 918/7

TIGER II 8127

JEZABELLE 62J8

CFI SASSY BABY 250/0

*CF SASSY 8993

** *FUSION 578/3

CF SASSY MOMMA 528

- Cowboy Cool and Tio on top add the extra rib-shape and muscling we want
- Super high milk EPD in top 3% coming from Fusion and Sassy
- Big loin scan of 13" and heavy YW; Monster \$M in top 5% of the breed

PERFORMANCE TEST & GRADING SCORES

Beginning WDA Ratio	122.13	Visual Grading Ratio	109.42
Gain Test ADG Ratio	87.43	TOTAL Ratio Score	107.54
Ultrasound Scan Ratio	99.96		

INDIVIDUAL PERFORMANCE RECORDS

	BW	WW	YW	SCROTAL AS OF 1/30/23	REA	%IMF	RIB FAT	RUMP FAT
RATIO	98	110	107		107	90	104	78
CONTEMP	14	14	3		3	3	3	3
ADJ. TRAIT	79	646	1106	44	13.09	3.05	0.28	0.29

EXPECTED PROGENY DIFFERENCES

ULTRASOUND EPDs

INDEXES

	CE	BW	WW	YW	MILK	TM	MCE	SC	REA	%IMF	RIB FAT	\$T	\$M
EPD	3.1	0.1	32.7	46.2	13.4	29.8	2.3	0.7	0.07	-0.18	-0.032	78.48	30.68
ACC	0.31				0.27		0.17	0.46				--	--

37

V7 107/21

REG#: C1148669 DNA: 41817023765 PV
BRAND: V7 107/21 DOB: 4/15/21

V - SEVEN
RED | HORNS



- Kingston is known to produce style and performance test winners
- This deep made bull is extra smooth and super sound made
- Low birth-weight, strong WW, and good \$M index in top 25%

**LOGAN 62M27 QUASAR 991
JEZABELLE 62J8

CF KINGSTON 730/4

CIRCLE C 91/5

V - SEVEN 501

V - SEVEN 1866/2

V - SEVEN 1350

** BLACK JACK 21 SUGAR PIE 42/01
CHANNAROCK FARM 869/1 SEVEN-C ANDERSON CATTLE 925

COOL COTTON 07/5 SEVEN-C ANDERSON CATTLE 769

PERFORMANCE TEST & GRADING SCORES			
Beginning WDA Ratio	91.40	Visual Grading Ratio	110.74
Gain Test ADG Ratio	111.03	TOTAL Ratio Score	107.39
Ultrasound Scan Ratio	96.36		

INDIVIDUAL PERFORMANCE RECORDS									EXPECTED PROGENY DIFFERENCES								ULTRASOUND EPDs			INDEXES			
	BW	WW	YW	SCROTAL AS OF 1/30/23	REA	%IMF	RIB FAT	RUMP FAT		CE	BW	WW	YW	MILK	TM	MCE	SC	REA	%IMF	RIB FAT	\$T	\$M	
RATIO	111	102	95		97	99	100	84															
CONTEMP	14	2	2		2	2	2	2	EPD	3.4	0.0	20.5	26.3	9.2	19.5	3.2	0.0	-0.10	-0.13	-0.026	44.49	20.61	
ADJ. TRAIT	64	669	832	38	10.69	3.61	0.21	0.21	ACC	0.31				0.29		0.17	0.47				--	--	

38

WR SSCC RIPCORD

REG#: C1138233 DNA: 101819024694 PV
BRAND: WR 17/21 DOB: 3/23/21

BLUE RIBBON
RED | HORNS



- Show ring producers and club calf guys will want to study hard here
- Proven winners top and bottom in the pedigree and performance to match
- Strong scan data with a big REA and IMF while boasting a top 20% \$M index

**TABASCO 3018K10 ** RED TIGER 9075
JUNGLE SPICE 786

CF RIPTIDE 875/3

*CF RAQUEL 933/9

**LOGAN 62M27 JUNGLE WHISPER 49/1

** BLACK JACK 21 ** BLACK MAGIC 120/97
MISS SCARLET USA 8-1

WR FOXIE 40/11

WR ROXIE 23/9 EMS JOHNNY CASH 632
SOX 129/7

PERFORMANCE TEST & GRADING SCORES			
Beginning WDA Ratio	95.08	Visual Grading Ratio	106.55
Gain Test ADG Ratio	126.65	TOTAL Ratio Score	107.34
Ultrasound Scan Ratio	105.75		

INDIVIDUAL PERFORMANCE RECORDS									EXPECTED PROGENY DIFFERENCES								ULTRASOUND EPDs			INDEXES			
	BW	WW	YW	SCROTAL AS OF 1/30/23	REA	%IMF	RIB FAT	RUMP FAT		CE	BW	WW	YW	MILK	TM	MCE	SC	REA	%IMF	RIB FAT	\$T	\$M	
RATIO		100	100		100	100	100	100															
CONTEMP		1	1		1	1	1	1	EPD	2.3	0.6	27.8	39.9	10.2	24.1	2.7	0.3	0.28	-0.13	-0.031	68.37	22.85	
ADJ. TRAIT		565	966	42	14.03	3.48	0.28	0.32	ACC	0.29	0.57	0.58	0.55	0.29	0.39	0.18	0.49				--	--	

39

V7 106/21

REG#: C1156787 DNA: 41817023764 PO
BRAND: V7 106/21 DOB: 1/15/21

V - SEVEN
RED | HORNS



- Vision and Maiden Sugar on the top provide a unique genetic combination
- Great looking bull with super long side, deep made, yet sound and smooth
- Calving ease and good milk combine for \$M in top 30% of breed

** VISION 905 **LOGAN 62M27
** PENELOPE 293J11

COLLIER FARMS CF 593/6

MAIDEN SUGAR 52/02

RED BULL 511

V7 1994/5

V - SEVEN 1586

** SYNERGY 84/95 L TWO RANCH 88/93
NEW DIMENSION 805 HS HEAVENLY HATTIE 62T14

SANDY PRIDE 1/6-16 V - SEVEN 163/4

PERFORMANCE TEST & GRADING SCORES			
Beginning WDA Ratio	92.21	Visual Grading Ratio	112.28
Gain Test ADG Ratio	107.29	TOTAL Ratio Score	107.33
Ultrasound Scan Ratio	87.84		

INDIVIDUAL PERFORMANCE RECORDS									EXPECTED PROGENY DIFFERENCES								ULTRASOUND EPDs			INDEXES			
	BW	WW	YW	SCROTAL AS OF 1/30/23	REA	%IMF	RIB FAT	RUMP FAT		CE	BW	WW	YW	MILK	TM	MCE	SC	REA	%IMF	RIB FAT	\$T	\$M	
RATIO	104	100	100		100	100	100	100															
CONTEMP	14	1	1		1	1	1	1	EPD	4.5	0.3	24.8	39.0	9.9	22.3	3.9	0.1	0.11	-0.08	-0.037	67.49	18.79	
ADJ. TRAIT	68	546	704	41	9.1	3.07	0.17	0.19	ACC	0.31				0.27		0.17	0.45				--	--	

40

SWB 08821

REG#: C1144718 DNA: NE02302675 PV
BRAND: SWB 8821 DOB: 1/7/21

BOUNDS SWINGING B RANCH

RED | HORNS



NEW DIMENSION 805
CF GALVESTON 414/5
CF LOGAN'S LOVE 617/1
*DOUBLE L 7008
HOOD WONDER WOMAN 615H
*MS HOOD 968

V - SEVEN 501
V - SEVEN 1673
** *LOGAN 62M27
** SEVEN-C ANDERSON CATTLE 450
** *L BAR 5502
L BAR 4431
SCHNEIDER 0481
MS HOOD 703

- Galveston is known to produce the big body and depth while keeping the look
- Dam is stacked with proven performance genetics and fleshing ease
- Solid carcass scan for both REA and IMF with a \$M in the top 40%

PERFORMANCE TEST & GRADING SCORES			
Beginning WDA Ratio	88.12	Visual Grading Ratio	109.86
Gain Test ADG Ratio	115.95	TOTAL Ratio Score	107.19
Ultrasound Scan Ratio	98.80		

INDIVIDUAL PERFORMANCE RECORDS								EXPECTED PROGENY DIFFERENCES								ULTRASOUND EPDs			INDEXES				
	BW	WW	YW	SCROTAL AS OF 1/30/23	REA	%IMF	RIB FAT	RUMP FAT		CE	BW	WW	YW	MILK	TM	MCE	SC	REA	%IMF	RIB FAT	\$T	\$M	
RATIO	101	84	89		95	86	71	94															
CONTEMP	7	2	2		2	2	2	2	EPD	2.5	0.2	22.8	37.9	8.3	19.7	2.5	0.1	0.30	-0.28	-0.052	63.85	15.29	
ADJ. TRAIT	71	451	907	37	12.45	3.17	0.15	0.29	ACC	0.32				0.28		0.18	0.48				--	--	

41

BB PROTOCOL

REG#: C1141912 DNA: 22620010402 PV
BRAND: BB 700 DOB: 2/15/21

BLUEBONNET BEEFMASTERS

RED | POLLED



CF TROUBADOR 879/3
CF STILETTO 817/6
SOUTHERN LADY 0634
** *LOGAN 62M27
CF FRONT RUNNER'S DAM 856/1
HS FIRST MORNING 293T24

NEW DIMENSION 805
*CF RAQUEL 933/9
** CAVALIER 19/5
L TWO RANCH 106/07
QUASAR 991
JEZABELLE 62J8
NAVASOTA 2/0
** PENELOPE 293J11

- An impressive solid dark red, POLLED bull with extra rib shape and muscle
- Dam is the mother to past CF Bull Sale high seller Front Runner - \$32,000
- Awesome WW growth and solid \$M index in top 25%

PERFORMANCE TEST & GRADING SCORES			
Beginning WDA Ratio	109.45	Visual Grading Ratio	108.10
Gain Test ADG Ratio	112.28	TOTAL Ratio Score	107.08
Ultrasound Scan Ratio	92.45		

INDIVIDUAL PERFORMANCE RECORDS								EXPECTED PROGENY DIFFERENCES								ULTRASOUND EPDs			INDEXES				
	BW	WW	YW	SCROTAL AS OF 1/30/23	REA	%IMF	RIB FAT	RUMP FAT		CE	BW	WW	YW	MILK	TM	MCE	SC	REA	%IMF	RIB FAT	\$T	\$M	
RATIO	100	100	100		100	100	100	100															
CONTEMP	1	1	1		1	1	1	1	EPD	2.9	0.5	21.3	26.9	8.5	19.1	2.8	0.1	-0.14	-0.08	-0.044	46.68	20.23	
ADJ. TRAIT	74	799	980	42	11.39	2.71	0.2	0.21	ACC	0.29	0.58	0.57	0.54	0.28	0.38	0.17	0.48				--	--	

42

SWB 12821

REG#: C1155182 DNA: NE02378669 PV
BRAND: SWB 12821 DOB: 5/4/21

BOUNDS SWINGING B RANCH

RED | SCURS



NEW DIMENSION 805
SWB LUCKENBACH 08614
AUTUMN'S GIRL 31-10
CF DREAM CATCHER 914
*POLLED SEXY DREAM 531Z
MISS CJ 531

V - SEVEN 501
V - SEVEN 1673
BULLET PROOF 864
JAZZIE 293L55
** L2 CAPTAIN SUGAR 12/02
** OASIS 655
** *CJ'S SOUL MAN 168
FANCY TIGER 7-058

- Luckenbach produced this long made, big frame range bull ready to roll
- Scurred POLLED coming from Pacesetter donor dam on the bottom side
- High REA measure and ratio with nice IMF combined with strong maternal lines

PERFORMANCE TEST & GRADING SCORES			
Beginning WDA Ratio	91.71	Visual Grading Ratio	107.87
Gain Test ADG Ratio	119.33	TOTAL Ratio Score	106.85
Ultrasound Scan Ratio	102.30		

INDIVIDUAL PERFORMANCE RECORDS								EXPECTED PROGENY DIFFERENCES								ULTRASOUND EPDs			INDEXES				
	BW	WW	YW	SCROTAL AS OF 1/30/23	REA	%IMF	RIB FAT	RUMP FAT		CE	BW	WW	YW	MILK	TM	MCE	SC	REA	%IMF	RIB FAT	\$T	\$M	
RATIO	102	97	103		111	96	107	120															
CONTEMP	4	5	4		4	4	4	4	EPD	4.0	0.4	20.9	35.3	9.4	19.8	3.5	0.0	0.37	-0.20	-0.046	60.17	14.99	
ADJ. TRAIT	70	427	944	40	13.37	3.27	0.29	0.59	ACC	0.31				0.28		0.18	0.47				--	--	

43

V7 105/21

REG#: C1148670 DNA: 41817023762 SV
BRAND: V7 105/21 DOB: 3/2/21

V - SEVEN
RED | HORNS



**LOGAN 62M27

QUASAR 991
JEZABELLE 62J8

CF KINGSTON 730/4

CIRCLE C 91/5

**BLACK JACK 21
SUGAR PIE 42/01

TIO 4/162

**PAINTED TIGER 3-390
PHANNIE K 3005

V - SEVEN 1752

SEVEN-C ANDERSON CATTLE 657

SEVEN-C ANDERSON CATTLE 52/3
SEVEN-C ANDERSON CATTLE 253/3

- Sire, CF Kingston produced 2021 LOBBA champion bull and the high seller
- Super nice designed bull with dark red coloring and clean underline
- Strong ADG test ratio and visual grading score with impressive IMF%

PERFORMANCE TEST & GRADING SCORES			
Beginning WDA Ratio	93.55	Visual Grading Ratio	108.76
Gain Test ADG Ratio	109.78	TOTAL Ratio Score	106.34
Ultrasound Scan Ratio	98.80		

INDIVIDUAL PERFORMANCE RECORDS									EXPECTED PROGENY DIFFERENCES								ULTRASOUND EPDs			INDEXES			
	BW	WW	YW	SCROTAL AS OF 1/30/23	REA	%IMF	RIB FAT	RUMP FAT		CE	BW	WW	YW	MILK	TM	MCE	SC	REA	%IMF	RIB FAT	\$T	\$M	
RATIO	97	98	105		103	101	100	116															
CONTEMP	14	2	2		2	2	2	2	EPD	2.5	1.3	19.1	38.2	8.1	17.6	3.0	0.2	-0.07	-0.10	-0.023	65.22	8.58	
ADJ. TRAIT	73	648	921	41.5	11.31	3.69	0.21	0.29	ACC	0.31				0.29		0.17	0.47				--	--	

44

CF 334/1

REG#: C1150010 DNA: 9518035580 SV
BRAND: CF 334/1 DOB: 2/1/21

COLLIER FARMS
RED | HORNS

TOTALLY TABASCO 681/7

**TABASCO 3018K10
COLLIER FARMS 371/3

WAYNE BRYANT WB 7717

COLLIER FARMS 825/5

COLLIER FARMS 328/2
COLLIER FARMS 289/2

COLLIER FARMS 906/7

**LOGAN 62M27
**PENELOPE 293J11

COLLIER FARMS CF 835/5

THE HOMESTEAD HMST 293S60

**CJ'S SOUL MAN 168
**LADY VICTORIA 236

- A tough made range bull with extra growth and strong design
- High WW and YW ratios and performance with big milk EPD
- Puts together both REA and IMF carcass with the needed \$M for balance

PERFORMANCE TEST & GRADING SCORES			
Beginning WDA Ratio	113.26	Visual Grading Ratio	107.21
Gain Test ADG Ratio	97.31	TOTAL Ratio Score	106.25
Ultrasound Scan Ratio	101.45		

INDIVIDUAL PERFORMANCE RECORDS									EXPECTED PROGENY DIFFERENCES								ULTRASOUND EPDs			INDEXES			
	BW	WW	YW	SCROTAL AS OF 1/30/23	REA	%IMF	RIB FAT	RUMP FAT		CE	BW	WW	YW	MILK	TM	MCE	SC	REA	%IMF	RIB FAT	\$T	\$M	
RATIO	95	106	108		106	90	83	109															
CONTEMP	8	8	8		8	8	8	8	EPD	1.3	1.2	25.1	40.7	11.0	23.6	2.4	0.3	0.12	-0.16	-0.043	69.77	18.46	
ADJ. TRAIT	81	676	1060	42	13.42	3.12	0.2	0.36	ACC	0.31				0.27		0.17	0.44				--	--	

45

CF 208/1

REG#: C1157860 DNA: 9518022504 PV
BRAND: CF 208/1 DOB: 1/13/21

COLLIER FARMS
RED | HORNS



CF BRAVADO 450/3

**VISION 905
RED ESSENCE 129/07

CF BRAVADO 373/5

**BETTY'S LAST 45/1

BRYAN RANCH 126/6
DIAMOND W 34/3

CF RIPTIDE 875/3

**TABASCO 3018K10
*CF RAQUEL 933/9

CF TIDAL DREAM 827/8

CJ SUPERIOR DREAM 1117

CF DREAM CATCHER 914
*MISS SUPERIOR 8

- Bravado and Brock have both proven highly productive back on Tidal Dream
- Riptide and Dream Catcher give you the growth while Bravado produces the look
- Good REA carcass numbers with strong \$T and big \$M index in the top 4%

PERFORMANCE TEST & GRADING SCORES			
Beginning WDA Ratio	122.95	Visual Grading Ratio	106.11
Gain Test ADG Ratio	95.81	TOTAL Ratio Score	106.13
Ultrasound Scan Ratio	99.78		

INDIVIDUAL PERFORMANCE RECORDS									EXPECTED PROGENY DIFFERENCES								ULTRASOUND EPDs			INDEXES			
	BW	WW	YW	SCROTAL AS OF 1/30/23	REA	%IMF	RIB FAT	RUMP FAT		CE	BW	WW	YW	MILK	TM	MCE	SC	REA	%IMF	RIB FAT	\$T	\$M	
RATIO	93	103	107		100	90	85	95															
CONTEMP	4	4	2		2	2	2	2	EPD	4.5	-0.2	37.5	49.5	8.5	27.3	3.5	0.8	0.05	-0.22	-0.047	84.22	31.45	
ADJ. TRAIT	87	659	1085	40	13.84	2.68	0.22	0.37	ACC	0.32				0.26		0.17	0.48				--	--	

46

GMR MR 744

REG#: C1151383 DNA: NE01727646 SV
BRAND: GMR 744 DOB: 3/17/21

GOLDEN MEADOWS RANCH LLC
DARK RED | HORNS



CF Cortez 374/5
Sire of Lot 46

** CF SUGAR BRITCHES 040

** L2 CAPTAIN SUGAR 12/02

** OASIS 655

CF CORTEZ 374/5

** LOGAN'S BENGAL BABY 134/0

** *LOGAN 62M27

** *BENGAL BABY 93/05

RED EAGLE 3289

** CAVALIER 19/5

TIGER FARRAH 293H10

SARCO'S MARVELLA MAGIC 007/7

MARVELLA 1991/5

RED BULL 511

V - SEVEN 1808

- Sire, CF Cortez brings in some of the breed's best with Sugar Britches and LBB
- Good milk EPD and lower birthweight numbers aid in better maternal genetics
- Solid REA/cwt of 1.27 and IMF over 3% with a \$M in top 40%

PERFORMANCE TEST & GRADING SCORES			
Beginning WDA Ratio	94.12	Visual Grading Ratio	108.10
Gain Test ADG Ratio	112.28	TOTAL Ratio Score	106.08
Ultrasound Scan Ratio	97.76		

INDIVIDUAL PERFORMANCE RECORDS									EXPECTED PROGENY DIFFERENCES								ULTRASOUND EPDs			INDEXES			
	BW	WW	YW	SCROTAL AS OF 1/30/23	REA	%IMF	RIB FAT	RUMP FAT		CE	BW	WW	YW	MILK	TM	MCE	SC	REA	%IMF	RIB FAT	\$T	\$M	
RATIO	100	101	100		100	100	100	100		EPD	2.5	1.1	18.8	28.7	10.5	20.0	2.8	0.1	-0.05	-0.07	-0.023	49.26	16.69
CONTEMP	17	10	1		1	1	1	1		ACC	0.31				0.28		0.17	0.46				--	--
ADJ. TRAIT	74	578	933	40	11.87	3.28	0.24	0.42															

47

CF 538/1

REG#: C1150096 DNA: 21121059092 PV
BRAND: CF 538/1 DOB: 1/26/21

COLLIER FARMS
RED | HORNS



** CF SUGAR BRITCHES 040

** L2 CAPTAIN SUGAR 12/02

** OASIS 655

CF DIAMOND BRITCHES 412/7

DIAMOND MAIDEN 1931/4

** CAVALIER 19/5

L2 MAIDEN LADY 154/00

** *FUSION 578/3

** *TABASCO 3018K10

** PHANTOM'S DIAMOND 119/9

COLLIER FARMS CF 339/7

COLLIER FARMS CF 939/5

JESSE 120-7

DOROTIK 8/8

- Sire Diamond Britches is quickly becoming a go-to herd bull at Collier Farms
- Fusion on Jesse produce the kind of femininity and class needed on the bottom
- Huge 748 WW and big carcass scan data boost the value of the top 15% \$ M

PERFORMANCE TEST & GRADING SCORES			
Beginning WDA Ratio	106.56	Visual Grading Ratio	106.55
Gain Test ADG Ratio	101.80	TOTAL Ratio Score	105.67
Ultrasound Scan Ratio	102.43		

INDIVIDUAL PERFORMANCE RECORDS									EXPECTED PROGENY DIFFERENCES								ULTRASOUND EPDs			INDEXES			
	BW	WW	YW	SCROTAL AS OF 1/30/23	REA	%IMF	RIB FAT	RUMP FAT		CE	BW	WW	YW	MILK	TM	MCE	SC	REA	%IMF	RIB FAT	\$T	\$M	
RATIO	103	103	99		102	115	123	111		EPD	4.6	0.1	25.9	32.0	8.3	21.3	3.2	0.1	-0.12	0.02	-0.023	56.07	23.91
CONTEMP	15	16	15		15	15	15	15		ACC	0.32				0.28		0.17	0.48				--	--
ADJ. TRAIT	75	748	986	42.5	12.47	3.7	0.32	0.41															

48

CF 489/1

REG#: C1150043 DNA: 21121059043 SV
BRAND: CF 489/1 DOB: 2/6/21

COLLIER FARMS
RED | POLLED



DWIGHT RAMPLEY 404

NOTHINS BETTER 000

DWIGHT RAMPLEY 273

SCHNEIDER 0481

FRENZEL 4115

KENT MINDEMANN 823

FRENZEL 5111

SLICK 16

COLLIER FARMS 774/7

V - SEVEN 1723

COLLIER FARMS CF 821/5

COLLIER FARMS CF 753/3

COLLIER FARMS 807/9

*COLLIER FARMS CF 904/9

- POLLED breeders will appreciate the extreme length and big top in this range bull
- Super clean underlined and extra easy fleshing add to the value
- Big WW pushing 800 and impressive carcass measures make this one unique

PERFORMANCE TEST & GRADING SCORES			
Beginning WDA Ratio	108.97	Visual Grading Ratio	104.79
Gain Test ADG Ratio	104.79	TOTAL Ratio Score	105.59
Ultrasound Scan Ratio	108.55		

INDIVIDUAL PERFORMANCE RECORDS									EXPECTED PROGENY DIFFERENCES								ULTRASOUND EPDs			INDEXES			
	BW	WW	YW	SCROTAL AS OF 1/30/23	REA	%IMF	RIB FAT	RUMP FAT		CE	BW	WW	YW	MILK	TM	MCE	SC	REA	%IMF	RIB FAT	\$T	\$M	
RATIO	105	110	106		115	120	139	146		EPD	5.4	-1.2	24.9	39.8	12.9	25.4	3.1	0.0	0.44	0.23	-0.005	71.83	22.96
CONTEMP	15	16	15		15	15	15	15		ACC	0.32				0.36		0.19	0.51				--	--
ADJ. TRAIT	74	798	1057	38	14.09	3.87	0.36	0.54															

49

SWB 00921

REG#: C1137244 DNA: NE01727507 PV
BRAND: SWB 921 DOB: 1/26/21

BOUNDS SWINGING B RANCH

RED | HORNS



J & K 1001
MCALESTER 4521
KENT MINDEMANN 95
** *FUSION 578/3
CF RAVISHING RUBY 111/2
TIGER'S DESTINY 602

SIMON CREEK 5/34
SIMON CREEK 317
LASATER BEEFMASTER 3265
KENT MINDEMANN 546
** *TABASCO 3018K10
** PHANTOM'S DIAMOND 119/9
** *PAINTED TIGER 3-390
KAVANNA 040

- A massive made bull with tons of capacity, square hip, and extended front
- Sire MacAlester is a proven REA and growth bull as is evident here; 14.71" REA
- Donor dam has the milk and longevity coming from both Fusion and Painted Tiger

PERFORMANCE TEST & GRADING SCORES			
Beginning WDA Ratio	99.49	Visual Grading Ratio	105.45
Gain Test ADG Ratio	108.90	TOTAL Ratio Score	105.49
Ultrasound Scan Ratio	108.37		

INDIVIDUAL PERFORMANCE RECORDS				EXPECTED PROGENY DIFFERENCES								ULTRASOUND EPDs			INDEXES								
	BW	WW	YW	SCROTAL AS OF 1/30/23	REA	%IMF	RIB FAT	RUMP FAT		CE	BW	WW	YW	MILK	TM	MCE	SC	REA	%IMF	RIB FAT	\$T	\$M	
RATIO	111	100	100		100	100	100	100		EPD	4.6	-0.8	28.7	46.4	9.9	24.3	3.3	0.8	0.63	-0.22	-0.032	78.76	23.21
CONTEMP	7	1	1		1	1	1	1		ACC	0.33	0.65			0.34		0.18	0.52				--	--
ADJ. TRAIT	65	590	1024	44.5	14.71	3.56	0.29	0.44															

50

HTC 173

REG#: C1145733 DNA: 9518035991 PENDING
BRAND: HTC 173 DOB: 2/1/21

H. T. CHAPMAN

RED | HORNS



CF RIPTIDE 875/3
COLLIER FARMS CF 712/8
*COLLIER FARMS CF 568/1
COLLIER FARMS CF 325/4
HT CHAPMAN 845
H.T. CHAPMAN 137/1

** *TABASCO 3018K10
*CF RAQUEL 933/9
*FOUNDATION 712
** *BETTY'S LAST 45/1
** *LOGAN 62M27
4C CLASSIC BEAUTY 607-9
MARINER 98/1
HUGH T. CHAPMAN 16/5

- Deep made, dark red bulls with ample body and good lines are easy to like
- Riptide on top and Logan on bottom provides the consistency and predictability
- Outstanding milk EPD and even better carcass data with a 14" REA and high IMF

PERFORMANCE TEST & GRADING SCORES			
Beginning WDA Ratio	106.84	Visual Grading Ratio	107.87
Gain Test ADG Ratio	84.83	TOTAL Ratio Score	105.49
Ultrasound Scan Ratio	108.06		

INDIVIDUAL PERFORMANCE RECORDS				EXPECTED PROGENY DIFFERENCES								ULTRASOUND EPDs			INDEXES								
	BW	WW	YW	SCROTAL AS OF 1/30/23	REA	%IMF	RIB FAT	RUMP FAT		CE	BW	WW	YW	MILK	TM	MCE	SC	REA	%IMF	RIB FAT	\$T	\$M	
RATIO		100	100		108	110	88	105		EPD	2.7	0.5	22.1	37.8	11.9	22.9	3.0	0.2	0.26	-0.14	-0.043	65.07	17.57
CONTEMP		7	4		4	4	4	4		ACC	0.05	0.24			0.12		0.02	0.22				--	--
ADJ. TRAIT		610	968	41	14.39	3.66	0.21	0.39															

51

CF 537/1

REG#: C1158378 DNA: 21121059091 PV
BRAND: CF 537/1 DOB: 2/10/21

COLLIER FARMS

LIGHT RED | HORNS



** VISION 905
CF BROCK 450/3
RED ESSENCE 129/07
CF RIPTIDE 875/3
CF TIDAL DREAM 827/8
CJ SUPERIOR DREAM 1117

** *LOGAN 62M27
** *PENELOPE 293/11
** L2 CAPTAIN SUGAR 12/02
RED ANNA 2/04
** *TABASCO 3018K10
*CF RAQUEL 933/9
CF DREAM CATCHER 914
*MISS SUPERIOR 8

- A lighter red bull bringing in Brock on Tidal Dream for genetic greatness
- Well-made bull with plenty of bone and extra wide rear
- Massive WW of 756, good calving ease and High \$M in top 4% of breed

PERFORMANCE TEST & GRADING SCORES			
Beginning WDA Ratio	95.27	Visual Grading Ratio	108.32
Gain Test ADG Ratio	106.04	TOTAL Ratio Score	105.47
Ultrasound Scan Ratio	95.14		

INDIVIDUAL PERFORMANCE RECORDS				EXPECTED PROGENY DIFFERENCES								ULTRASOUND EPDs			INDEXES								
	BW	WW	YW	SCROTAL AS OF 1/30/23	REA	%IMF	RIB FAT	RUMP FAT		CE	BW	WW	YW	MILK	TM	MCE	SC	REA	%IMF	RIB FAT	\$T	\$M	
RATIO	102	104	99		102	83	71	81		EPD	5.6	-0.8	34.0	40.4	7.6	24.6	3.5	0.6	-0.08	-0.19	-0.040	68.57	31.70
CONTEMP	13	13	13		13	13	13	13		ACC	0.32				0.28		0.17	0.49				--	--
ADJ. TRAIT	84	756	928	36	11.96	2.85	0.17	0.25															

52

CF 342/1

REG#: C1159995 DNA: 9518035572 PV
BRAND: CF 342/1 DOB: 2/8/21

COLLIER FARMS

RED | HORNS



TOTALLY TABASCO 681/7

** TABASCO 3018K10
COLLIER FARMS 371/3

WAYNE BRYANT WB 77/7

COLLIER FARMS 825/5

COLLIER FARMS 328/2
COLLIER FARMS 289/2
QUASAR 991
JEZABELLE 62J8

** *LOGAN 62M27

COLLIER FARMS CF 849/1

*TIGER BABY 684

** *PAINTED TIGER 3-390
** THOMPSON - ROCKING T 3024

- Totally Tabasco consistently produces calving ease and milk with growth
- Dam 849/1 was gorgeous embryo calf out of the great Tiger Baby donor
- Attractive scan data in both REA and IMF in a powerful herd sire prospect

PERFORMANCE TEST & GRADING SCORES

Beginning WDA Ratio	97.10	Visual Grading Ratio	110.96
Gain Test ADG Ratio	82.34	TOTAL Ratio Score	105.39
Ultrasound Scan Ratio	97.72		

INDIVIDUAL PERFORMANCE RECORDS

	BW	WW	YW	SCROTAL AS OF 1/30/23	REA	%IMF	RIB FAT	RUMP FAT
RATIO	100	96	93		97	90	125	88
CONTEMP	8	8	8		8	8	8	8
ADJ. TRAIT	77	616	916	42	12.23	3.11	0.3	0.29

EXPECTED PROGENY DIFFERENCES

ULTRASOUND EPDs

INDEXES

	CE	BW	WW	YW	MILK	TM	MCE	SC	REA	%IMF	RIB FAT	\$T	\$M
EPD	1.3	1.4	23.0	27.9	10.8	22.3	2.1	0.3	-0.11	-0.24	-0.036	46.35	23.47
ACC	0.31				0.29		0.17	0.45				--	--

53

HTC 189

REG#: C1146635 DNA: 9518035990 PENDING
BRAND: HTC 189 DOB: 2/20/21

H. T. CHAPMAN

RED | HORNS



VMAX 649/1

** VISION 905
FUSION'S SISTER 692/7

COLLIER FARMS CF 869/3

H M S 1845/3

** SYNERGY 84/95
** THORNBUSH T129

COLLIER FARMS CF 590/1

** *LOGAN 62M27
DIAMOND W 37/3

H. T. CHAPMAN 474

H. T. CHAPMAN 127/1

COLLIER FARMS 776/7
H. T. CHAPMAN 87/2

- Sire CF 869/3 consistently produces deep sided, sound structured bulls
- Solid weaning growth and high ratio out of 26 contemporaries
- Super high ADG test ratio and commendable visual scores with good \$M

PERFORMANCE TEST & GRADING SCORES

Beginning WDA Ratio	88.88	Visual Grading Ratio	106.55
Gain Test ADG Ratio	127.25	TOTAL Ratio Score	105.33
Ultrasound Scan Ratio	91.28		

INDIVIDUAL PERFORMANCE RECORDS

	BW	WW	YW	SCROTAL AS OF 1/30/23	REA	%IMF	RIB FAT	RUMP FAT
RATIO		106	100		100	100	100	100
CONTEMP		26	1		1	1	1	1
ADJ. TRAIT		640	881	46	10.11	3.12	0.2	0.32

EXPECTED PROGENY DIFFERENCES

ULTRASOUND EPDs

INDEXES

	CE	BW	WW	YW	MILK	TM	MCE	SC	REA	%IMF	RIB FAT	\$T	\$M
EPD	3.7	0.4	15.7	19.9	8.8	16.7	3.1	0.2	-0.37	-0.23	-0.040	32.50	17.70
ACC	0.06	0.26			0.19		0.02	0.20				--	--

54

SARCO BRAVADO STRIKER

REG#: C1143207 DNA: NE01800277 PV
BRAND: B&L 23/21 DOB: 2/25/21

B AND L CATTLE

RED | DEHORND

CF BROCK 450/3

** VISION 905
RED ESSENCE 129/07

CF BRAVADO 373/5

** *BETTY'S LAST 45/1

BRYAN RANCH 126/6
DIAMOND W 34/3
ROJO BUENO 7800
RANCHO TRES HIJOS LP 103/8

COLONEL TOM 31/0

ROJO BONITA 1/5

RANCHO TRES HIJOS LP 89/11

RANCHO TRES HIJOS LP 85/8
RANCHO TRES HIJOS LP 80/6

- Very visually attractive bull with excellent conformation, muscling and structure
- Bravado produces the moderation of frame but keep the muscle and WW growth
- Low birthweight, ideal for heifers or cows in a well-bred, maternal package

PERFORMANCE TEST & GRADING SCORES

Beginning WDA Ratio	101.52	Visual Grading Ratio	109.20
Gain Test ADG Ratio	92.81	TOTAL Ratio Score	105.19
Ultrasound Scan Ratio	93.20		

INDIVIDUAL PERFORMANCE RECORDS

	BW	WW	YW	SCROTAL AS OF 1/30/23	REA	%IMF	RIB FAT	RUMP FAT
RATIO	103	93	100		100	100	100	100
CONTEMP	3	3	1		1	1	1	1
ADJ. TRAIT	68	639	886	41	10.45	3.25	0.18	0.18

EXPECTED PROGENY DIFFERENCES

ULTRASOUND EPDs

INDEXES

	CE	BW	WW	YW	MILK	TM	MCE	SC	REA	%IMF	RIB FAT	\$T	\$M
EPD	4.7	-1.0	19.2	31.5	4.8	14.4	3.2	0.4	0.07	-0.12	-0.051	54.61	13.65
ACC	0.31				0.28		0.17	0.46				--	--

55

SKINNERS 26/21

REG#: C1142942 DNA: NE02561113 SV
BRAND: 4L 26/21 DOB: 3/19/21

FOUR L BEEFMASTERS

RED | HORNS



CF DREAM CATCHER 914
CF DREAM BIG 510/6
COLLIER FARMS CF 289/0
COLLIER FARMS 619/9
SKINNERS RAFTER S 50/15
BENDER 198

** L2 CAPTAIN SUGAR 12/02
** OASIS 655
LOGAN'S LEADER 653/7
*INK SPOT 6/94
** *LOGAN 62M27
** *BENGAL BABY 93/05
HILLTOP RANCH 34-05
H.T. CHAPMAN 41/4

- CF Dream Big keep pushes the muscle, rib-shape, bone and body to the forefront
- Maternal genetics galore on bottom with breed great, Bengal Baby
- Big time carcass scan ratios with a 111 on REA and 115 on IMF with solid \$M index

PERFORMANCE TEST & GRADING SCORES			
Beginning WDA Ratio	88.01	Visual Grading Ratio	109.64
Gain Test ADG Ratio	93.41	TOTAL Ratio Score	104.99
Ultrasound Scan Ratio	100.99		

INDIVIDUAL PERFORMANCE RECORDS								EXPECTED PROGENY DIFFERENCES								ULTRASOUND EPDs			INDEXES			
	BW	WW	YW	SCROTAL AS OF 1/30/23	REA	%IMF	RIB FAT	RUMP FAT		CE	BW	WW	YW	MILK	TM	MCE	SC	REA	%IMF	RIB FAT	\$T	\$M
RATIO	92	102	99		111	115	89	86										0.20	0.02	-0.033	55.24	16.30
CONTEMP	14	9	2		2	2	2	2	EPD	2.0	1.4	19.9	31.2	10.1	20.0	2.6	0.3					
ADJ. TRAIT	88	562	787	40	13.27	3.12	0.16	0.18	ACC	0.31				0.28		0.17	0.46				--	--

56

H BAR 1104

REG#: C1148952 DNA: 9518034192 PO
BRAND: H- 1104 DOB: 3/25/21

H-BAR BEEFMASTERS

RED | HORNS



CF DREAM CATCHER 914
COLLIER FARMS CF 523/6
*COLLIER FARMS 753/7
RED BULL 511
7C 704/17
SEVEN-C ANDERSON CATTLE 211/2

** L2 CAPTAIN SUGAR 12/02
** OASIS 655
LA MEJOR CATTLE CO. 9112
BUENO CREEK 9/0
NEW DIMENSION 805
HS HEAVENLY HATTIE 62T14
** *PAINTED TIGER 3-390
COLLIER FARMS CF 339/0

- Dream Catcher and a pace-setter dam give sire 523/6 a boost of growth power
- Very consistent performance in these lines with good WW and YW data
- Huge REA pushing 14" yielding a 1.4/cwt with and IMF crowding 4%

PERFORMANCE TEST & GRADING SCORES			
Beginning WDA Ratio	116.51	Visual Grading Ratio	106.11
Gain Test ADG Ratio	82.34	TOTAL Ratio Score	104.97
Ultrasound Scan Ratio	108.03		

INDIVIDUAL PERFORMANCE RECORDS								EXPECTED PROGENY DIFFERENCES								ULTRASOUND EPDs			INDEXES			
	BW	WW	YW	SCROTAL AS OF 1/30/23	REA	%IMF	RIB FAT	RUMP FAT		CE	BW	WW	YW	MILK	TM	MCE	SC	REA	%IMF	RIB FAT	\$T	\$M
RATIO	96	104	98		108	96	75	57										0.04	-0.26	-0.050	54.40	15.90
CONTEMP	6	13	9		9	9	9	9	EPD	2.4	1.4	20.2	32.4	10.6	20.7	3.7	0.1					
ADJ. TRAIT	77	611	1009	44	13.92	3.87	0.24	0.27	ACC	0.16				0.15		0.03	0.21				--	--

57

SWB 08021

REG#: C1138990 DNA: NE02302650 PV
BRAND: SWB 8021 DOB: 5/14/21

BOUNDS SWINGING B RANCH

RED | HORNS



MCALESTER 4521
SWB PETERBILT 08718
GYPSY LADY 33
EMS FIRE HOUSE 261
RM SMOKIN HOT M01
ISLAND FARM 69

J & K 1001
KENT MINDEMANN 95
CF DREAM CATCHER 914
CAINS MS CASEY 4-35 938X
BONFIRE 8038
EMS STYLISH JEZZY 849
** BLACK JACK 21
** OASIS 655

- SWB Peterbilt continues to crush the carcass measures for both REA and IMF
- Massive 15" REA and IMF in upper 3's proves up the excellent carcass EPD's
- Dam is full of stylish looking genetics with Fire House and Black Jack

PERFORMANCE TEST & GRADING SCORES			
Beginning WDA Ratio	110.56	Visual Grading Ratio	103.47
Gain Test ADG Ratio	104.29	TOTAL Ratio Score	104.93
Ultrasound Scan Ratio	110.14		

INDIVIDUAL PERFORMANCE RECORDS								EXPECTED PROGENY DIFFERENCES								ULTRASOUND EPDs			INDEXES			
	BW	WW	YW	SCROTAL AS OF 1/30/23	REA	%IMF	RIB FAT	RUMP FAT		CE	BW	WW	YW	MILK	TM	MCE	SC	REA	%IMF	RIB FAT	\$T	\$M
RATIO	104	99	101		108	102	100	91										0.70	0.04	-0.026	97.84	19.73
CONTEMP	13	12	8		8	8	8	7	EPD	3.6	0.0	32.3	55.7	9.0	25.2	2.0	0.7					
ADJ. TRAIT	70	560	1138	43	15	3.69	0.44	0.62	ACC	0.31				0.27		0.17	0.46				--	--

58

CF 526/1

REG#: C1150084 DNA: 21121059080 PV
BRAND: CF 526/1 DOB: 1/11/21

COLLIER FARMS
RED | HORNS



CF Troubador 879/3
Sire of Lot 58

NEW DIMENSION 805 V - SEVEN 501
CF TROUBADOR 879/3 V - SEVEN 1673
*CF RAQUEL 933/9 **LOGAN 62M27
JUNGLE WHISPER 49/1
CF DREAM CATCHER 914 **L2 CAPTAIN SUGAR 12/02
**OASIS 655
COLLIER FARMS CF 752/6 **LOGAN 62M27
**LOGAN'S BENGAL BABY 134/0 **BENGAL BABY 93/05

- Troubador continues to prove he produce growth and carcass with the best
- Massive WW of over 800 lbs. and YW nearing 1100 with a 13" REA
- Strong REA and high milk EPD's with a good \$T and even better \$M in top 4%

PERFORMANCE TEST & GRADING SCORES			
Beginning WDA Ratio	116.39	Visual Grading Ratio	103.91
Gain Test ADG Ratio	98.80	TOTAL Ratio Score	104.29
Ultrasound Scan Ratio	100.29		

INDIVIDUAL PERFORMANCE RECORDS								
	BW	WW	YW	SCROTAL AS OF 1/30/23	REA	%IMF	RIB FAT	RUMP FAT
RATIO	98	111	106		106	86	92	65
CONTEMP	20	20	17		13	13	13	13
ADJ. TRAIT	81	806	1078	44	13.46	2.93	0.24	0.24

EXPECTED PROGENY DIFFERENCES								ULTRASOUND EPDs				INDEXES	
	CE	BW	WW	YW	MILK	TM	MCE	SC	REA	%IMF	RIB FAT	\$T	\$M
EPD	2.3	1.0	36.6	48.1	11.1	29.4	2.7	0.7	0.32	-0.19	-0.043	82.22	31.55
ACC	0.32				0.31		0.18	0.51				--	--

59

CF 492/1

REG#: C1150048 DNA: 21121059046 PV
BRAND: CF 492/1 DOB: 2/17/21

COLLIER FARMS
RED | HORNS



**WPR'S THE TOTAL PACKAGE 7595 L BAR 0422
VFF AB MR 14137 *L BAR 3420
AB VALLEY PRIDE AB12111 C J'S MOTOWN 412
INFINITE LUCEY 9/07
**TABASCO 3018K10 **RED TIGER 9075
JUNGLE SPICE 786
CF FAST BETTY 572/3 BRYAN 126/6
**BETTY'S LAST 45/1 DIAMOND W 34/3

- Sire is a long-time proven herd bull at Collier Farms producing growth and fertility
- CF Fast Betty has turned out countless high selling, good looking females with longevity
- An easy to like quick fleshing bull that has the look and the \$M index in the top 1/3

PERFORMANCE TEST & GRADING SCORES			
Beginning WDA Ratio	96.65	Visual Grading Ratio	106.99
Gain Test ADG Ratio	93.56	TOTAL Ratio Score	104.19
Ultrasound Scan Ratio	102.69		

INDIVIDUAL PERFORMANCE RECORDS								
	BW	WW	YW	SCROTAL AS OF 1/30/23	REA	%IMF	RIB FAT	RUMP FAT
RATIO	110	92	93		100	115	84	91
CONTEMP	8	8	8		7	7	7	7
ADJ. TRAIT	77	585	900	41	12.86	3.56	0.21	0.31

EXPECTED PROGENY DIFFERENCES								ULTRASOUND EPDs				INDEXES	
	CE	BW	WW	YW	MILK	TM	MCE	SC	REA	%IMF	RIB FAT	\$T	\$M
EPD	5.1	-1.1	18.9	28.9	9.8	19.3	3.1	0.2	-0.11	-0.02	-0.042	50.99	19.09
ACC	0.32				0.32		0.18	0.48				--	--

60

DK 5 B 22/1

REG#: C1159201 DNA: 21121059600 SV
BRAND: DK5 22/1 DOB: 2/10/21

DK 5 BAR RANCH
RED | HORNS



EL PATRON 686/3 **LOGAN 62M27
COLLIER FARMS CF 964/7 HARMONY 62K11
FOREVER SASSY 292/2 LOGAN XL 2019
SLICK 16 *CF SASSY 8993
COLLIER FARMS 774/7
COLLIER FARMS CF 663/6 V - SEVEN 1723
**LOGAN 62M27
*MISTY RED 201 PERFECT NIRVANA 005

- El Patron marks his progeny and grand progeny with great looks as evident here
- Extremely smooth made bull with great lines and dark red coloring
- Impressive milk EPD and even better pedigree bringing in Slick 16 and Misty Red

PERFORMANCE TEST & GRADING SCORES			
Beginning WDA Ratio	86.07	Visual Grading Ratio	109.20
Gain Test ADG Ratio	96.06	TOTAL Ratio Score	104.11
Ultrasound Scan Ratio	94.63		

INDIVIDUAL PERFORMANCE RECORDS								
	BW	WW	YW	SCROTAL AS OF 1/30/23	REA	%IMF	RIB FAT	RUMP FAT
RATIO	101	100	91		95	89	100	84
CONTEMP	2	2	2		2	2	2	2
ADJ. TRAIT	77	606	659	41	10.96	3.23	0.21	0.32

EXPECTED PROGENY DIFFERENCES								ULTRASOUND EPDs				INDEXES	
	CE	BW	WW	YW	MILK	TM	MCE	SC	REA	%IMF	RIB FAT	\$T	\$M
EPD	5.2	-0.8	18.3	14.7	10.0	19.1	2.8	0.6	-0.21	-0.11	-0.039	25.22	28.49
ACC	0.13				0.13		0.03	0.22				--	--

61

CF 507/1

REG#: C1160042 DNA: 21121059061 PV
BRAND: CF 507/1 DOB: 3/14/21

COLLIER FARMS
RED WHITE UL | HORNS



** CF SUGAR BRITCHES 040
CF DIAMOND BRITCHES 412/7
DIAMOND MAIDEN 1931/4
COLLIER FARMS CF 408/0
COLLIER FARMS CF 457/7
BRADLEY'S CIRCLE J 10/1

** L2 CAPTAIN SUGAR 12/02
** OASIS 655
** CAVALIER 19/5
L2 MAIDEN LADY 154/00
** *LOGAN 62M27
*TIGER BABY 684
** *PAINTED TIGER 3-390
*SEXY SUGAR 36/3

- Gentle natured bull with big square hip and well-built conformation
- Good REA size and IMF % to compliment big WW of 652
- Diamond Maiden with a double shot of Tiger on bottom for extra maternal

PERFORMANCE TEST & GRADING SCORES			
Beginning WDA Ratio	99.81	Visual Grading Ratio	106.11
Gain Test ADG Ratio	99.80	TOTAL Ratio Score	104.09
Ultrasound Scan Ratio	98.51		

INDIVIDUAL PERFORMANCE RECORDS								EXPECTED PROGENY DIFFERENCES								ULTRASOUND EPDs			INDEXES				
	BW	WW	YW	SCROTAL AS OF 1/30/23	REA	%IMF	RIB FAT	RUMP FAT		CE	BW	WW	YW	MILK	TM	MCE	SC	REA	%IMF	RIB FAT	\$T	\$M	
RATIO	95	102	100		100	100	100	100	EPD	0.6	1.8	23.2	31.8	8.3	19.9	2.7	0.1	-0.23	-0.17	-0.030	53.55	17.79	
CONTEMP	4	4	1		1	1	1	1	ACC	0.31	1	0.61	0.60	0.27	0.38	0.17	0.48	1	1	1	--	--	
ADJ. TRAIT	90	652	984	47.5	12.42	3.14	0.24	0.33															

62

CRB 58/21

REG#: C1159966 DNA: NE02114336 PV
BRAND: CR 58/21 DOB: 3/15/21

CISSNA RANCH
RED MOT UL | DEHORND

** L2 CAPTAIN SUGAR 12/02
** CF SUGAR BRITCHES 040
** OASIS 655
CF ADRENALINE 170
CF CALAMITY JANE 704/4
SIMPLY SECRET 414

** INFINITY 120/96
** SUGAR ANN 45/6
** CAVALIER 19/5
** SEX LIFE 388
** INFINITY 120/96
** OASIS 655
** *PAINTED TIGER 3-390
** SECRET SENSATION 276

- One of the most maternally bred bulls in the offering with Sugar Ann and Oasis
- Very deep and smooth made with good lines and style
- Perfect for making pretty heifers with solid growth and nice carcass info

PERFORMANCE TEST & GRADING SCORES			
Beginning WDA Ratio	120.03	Visual Grading Ratio	104.57
Gain Test ADG Ratio	88.57	TOTAL Ratio Score	103.77
Ultrasound Scan Ratio	97.05		

INDIVIDUAL PERFORMANCE RECORDS								EXPECTED PROGENY DIFFERENCES								ULTRASOUND EPDs			INDEXES				
	BW	WW	YW	SCROTAL AS OF 1/30/23	REA	%IMF	RIB FAT	RUMP FAT		CE	BW	WW	YW	MILK	TM	MCE	SC	REA	%IMF	RIB FAT	\$T	\$M	
RATIO	93	100	100		100	100	100	100	EPD	3.9	0.2	13.4	24.3	8.6	15.3	3.2	0.0	-0.13	-0.02	-0.022	42.22	11.02	
CONTEMP	2	1	1		1	1	1	1	ACC	0.32	0.63	0.62	0.58	0.38	0.46	0.19	0.51	0.43	0.46	0.42	--	--	
ADJ. TRAIT	79	691	1022	41	11.31	3.43	0.28	0.61															

63

RW 117

REG#: C1144406 DNA: 9518035989 PENDING
BRAND: RW 117 DOB: 1/23/21

WALKER BEEFMASTERS
RED | HORNS



COLLIER FARMS CF 410/0
COLLIER FARMS CF 614/8
COLLIER FARMS CF 438/3
*BLAU RANCH 592
WALKER 110
WALKER 942

** *LOGAN 62M27
PERFECT NIRVANA 005
SLICK 16
BRADLEY'S CIRCLE J 63/0
FOUNDATION BEEFMASTERS 1673
*BLAU RANCH 337
ROCKING R GIDEON 2/28
WALKER 529

- A very long-topped bull with clean underline, good bone and muscle
- POLLED genetics on top coming from 410/0 and Slick 16
- Bottom side genetics come from a long line of Walker bred cows

PERFORMANCE TEST & GRADING SCORES			
Beginning WDA Ratio	106.44	Visual Grading Ratio	103.47
Gain Test ADG Ratio	109.78	TOTAL Ratio Score	103.71
Ultrasound Scan Ratio	96.55		

INDIVIDUAL PERFORMANCE RECORDS								EXPECTED PROGENY DIFFERENCES								ULTRASOUND EPDs			INDEXES				
	BW	WW	YW	SCROTAL AS OF 1/30/23	REA	%IMF	RIB FAT	RUMP FAT		CE	BW	WW	YW	MILK	TM	MCE	SC	REA	%IMF	RIB FAT	\$T	\$M	
RATIO		92	97		92	83	88	97	EPD	3.7	-0.1	14.3	25.5	9.9	17.1	3.3	0.2	-0.07	-0.01	-0.032	44.76	13.59	
CONTEMP		26	4		4	4	4	4	ACC	0.05	0.25	0.47	0.42	0.19	0.28	0.02	0.24	1	1	1	--	--	
ADJ. TRAIT		646	992	43.5	11.74	3.16	0.21	0.33															

64

cf180

REG#: C1153499 DNA: 102120045945 PV
BRAND: cf 180 DOB: 3/10/21

COTTAGE FARM

RED | HORNS



** VISION 905

** *LOGAN 62M27

** PENELOPE 293J11

CF BROCK 450/3

RED ESSENCE 129/07

** L2 CAPTAIN SUGAR 12/02

RED ANNA 2/04

CF ADRENALINE 170

** INFINITY 120/96

** OASIS 655

COLLIER FARMS CF 744/6

H M S 1845/3

** SYNERGY 84/95

** THORNBUSH T129

- Brock and Adrenaline keep proving up their consistency when combined
- Full flush-mate brother to lots 35 and 68 – put them together in multi sire herd
- A long-topped bull with plenty of bone and muscle while keeping the calving ease

PERFORMANCE TEST & GRADING SCORES

Beginning WDA Ratio	82.79	Visual Grading Ratio	108.32
Gain Test ADG Ratio	106.04	TOTAL Ratio Score	103.65
Ultrasound Scan Ratio	89.52		

INDIVIDUAL PERFORMANCE RECORDS

	BW	WW	YW	SCROTAL AS OF 1/30/23	REA	%IMF	RIB FAT	RUMP FAT
RATIO	111	116	96		95	101	78	87
CONTEMP	6	6	2		2	2	2	2
ADJ. TRAIT	71	617	793	40	9.34	3.21	0.18	0.27

EXPECTED PROGENY DIFFERENCES

ULTRASOUND EPDs

INDEXES

	CE	BW	WW	YW	MILK	TM	MCE	SC	REA	%IMF	RIB FAT	\$T	\$M
EPD	7.0	-1.5	19.9	15.8	4.7	14.6	2.9	0.0	-0.60	-0.09	-0.043	27.05	24.24
ACC	0.31				0.29		0.18	0.49				--	--

65

CF 352/1

REG#: C1164314 DNA: 9518035562
BRAND: CF 352/1 DOB: 3/7/21

COLLIER FARMS

RED | HORNS



** *LOGAN 62M27

QUASAR 991

JEZABELLE 62J8

COLLIER FARMS CF 876/3

SWEET TIGER ANNA 57/08

** L2 CAPTAIN SUGAR 12/02

** TIGER ANNA 96/97

PF SUGAR BULLET II 469

SUGAR BULLET 258-9

RIO QUEEN 930/9

CHILO 37/7

HT CHAPMAN 350/3

COLLIER FARMS 776/7

H T CHAPMAN 78/9

- A moderate frame bull with big rib-shape, muscle, and hardiness
- Stacked up maternal pedigree with Tiger Anna, Jezabelle and Rio Queen
- Impressive REA of over 13" and IMF of 3.37 for added carcass traits

PERFORMANCE TEST & GRADING SCORES

Beginning WDA Ratio	105.37	Visual Grading Ratio	105.89
Gain Test ADG Ratio	89.82	TOTAL Ratio Score	103.63
Ultrasound Scan Ratio	99.83		

INDIVIDUAL PERFORMANCE RECORDS

	BW	WW	YW	SCROTAL AS OF 1/30/23	REA	%IMF	RIB FAT	RUMP FAT
RATIO	100	100	100		100	100	100	100
CONTEMP	1	1	1		1	1	1	1
ADJ. TRAIT	78	645	973	36	13.72	3.37	0.21	0.3

EXPECTED PROGENY DIFFERENCES

ULTRASOUND EPDs

INDEXES

	CE	BW	WW	YW	MILK	TM	MCE	SC	REA	%IMF	RIB FAT	\$T	\$M
EPD	2.5	1.0	17.3	27.6	6.4	15.0	3.0	0.1	-0.16	-0.07	-0.034	47.84	11.33
ACC	PE	I	PE	PE	PE	PE	PE	PE	PE	PE	PE	--	--

66

CF 389/1

REG#: C1149986 DNA: 21121057896 SV
BRAND: CF 389/1 DOB: 2/16/21

COLLIER FARMS

RED | HORNS

CF BROCK 450/3

** VISION 905

RED ESSENCE 129/07

CF BRAVADO 373/5

** *BETTY'S LAST 45/1

BRYAN RANCH 126/6

DIAMOND W 34/3

** *TABASCO 3018K10

** RED TIGER 9075

JUNGLE SPICE 786

COLLIER FARMS CF 100/5

*CF RAQUEL 933/9

** *LOGAN 62M27

JUNGLE WHISPER 49/1

- Bravado on Riptide's full sister makes for an interesting genetic combo
- Easy to like with a great BW and CED EPD's, and monster \$M in top 3%
- Huge 205 WW of 770 coupled with a 12" REA and IMF over 3%

PERFORMANCE TEST & GRADING SCORES

Beginning WDA Ratio	104.29	Visual Grading Ratio	105.67
Gain Test ADG Ratio	92.81	TOTAL Ratio Score	103.52
Ultrasound Scan Ratio	98.38		

INDIVIDUAL PERFORMANCE RECORDS

	BW	WW	YW	SCROTAL AS OF 1/30/23	REA	%IMF	RIB FAT	RUMP FAT
RATIO	100	107	94		101	92	91	106
CONTEMP	11	11	8		8	8	8	8
ADJ. TRAIT	76	770	902	40	12.18	3.23	0.19	0.34

EXPECTED PROGENY DIFFERENCES

ULTRASOUND EPDs

INDEXES

	CE	BW	WW	YW	MILK	TM	MCE	SC	REA	%IMF	RIB FAT	\$T	\$M
EPD	4.8	-1.1	23.0	10.9	8.1	19.6	3.2	0.1	-0.08	-0.12	-0.053	19.20	34.97
ACC	0.32				0.30		0.17	0.48				--	--

67

SG 8/1

REG#: C1139220 DNA: 951895352 PV
BRAND: SWB 45139 DOB: 4/2/21

BOUNDS SWINGING B RANCH

RED | HORNS



- ** RED SUGAR 104/93
- ** INFINITY 120/96
- ** VANNA 5660
- ** *PAINTED TIGER 3-390
- PAINTED OASIS 680
- ** OASIS 655
- ** CHEROKEE PHANTOM USA 122/90
- ** SUGAR ANN 45/6
- ** *PHANTOM WARRIOR 3/254
- ** MADAM X 3/293
- ** PAINTED WARRIOR 0026
- ** DUNKIN FARMS 1-126
- ** CAVALIER 19/5
- ** SEX LIFE 388

- One of the most attractive bulls of the entire offering
- Unique genetic combination with Infinity and Painted Oasis donor
- Big YW performance over 1,000 lbs. and IMF bumping 4%

PERFORMANCE TEST & GRADING SCORES			
Beginning WDA Ratio	103.66	Visual Grading Ratio	104.35
Gain Test ADG Ratio	99.69	TOTAL Ratio Score	103.35
Ultrasound Scan Ratio	99.63		

INDIVIDUAL PERFORMANCE RECORDS								EXPECTED PROGENY DIFFERENCES								ULTRASOUND EPDs			INDEXES				
	BW	WW	YW	SCROTAL AS OF 1/30/23	REA	%IMF	RIB FAT	RUMP FAT		CE	BW	WW	YW	MILK	TM	MCE	SC	REA	%IMF	RIB FAT	\$T	\$M	
RATIO		100	100		100	100	100	100	EPD	2.9	0.6	18.2	33.9	8.5	17.6	2.3	0.2	-0.48	-0.12	-0.028	57.46	11.31	
CONTEMP		1	1		1	1	1	1	ACC	0.31	0.61	PE	PE	PE	PE	0.19	PE				--	--	
ADJ. TRAIT		513	1067	44	11.1	3.91	0.26	0.38															

68

cf174

REG#: C1153501 DNA: 102120045963 PV
BRAND: cf 174 DOB: 3/10/21

COTTAGE FARM

RED | HORNS



- ** VISION 905
- CF BROCK 450/3
- RED ESSENCE 129/07
- CF ADRENALINE 170
- COLLIER FARMS CF 744/6
- H M S 1845/3
- ** *LOGAN 62M27
- ** PENELOPE 293J11
- ** L2 CAPTAIN SUGAR 12/02
- RED ANNA 2/04
- ** INFINITY 120/96
- ** OASIS 655
- ** SYNERGY 84/95
- ** THORNBUSH T129

- The third of three flush-mate brothers in the offering and just as good
- Consistently long-made, big boned, and thick ended with fancy fronts
- Again, low birth weight, ample WW growth and good \$M index in top 15%

PERFORMANCE TEST & GRADING SCORES			
Beginning WDA Ratio	88.75	Visual Grading Ratio	106.99
Gain Test ADG Ratio	97.31	TOTAL Ratio Score	102.70
Ultrasound Scan Ratio	91.94		

INDIVIDUAL PERFORMANCE RECORDS								EXPECTED PROGENY DIFFERENCES								ULTRASOUND EPDs			INDEXES				
	BW	WW	YW	SCROTAL AS OF 1/30/23	REA	%IMF	RIB FAT	RUMP FAT		CE	BW	WW	YW	MILK	TM	MCE	SC	REA	%IMF	RIB FAT	\$T	\$M	
RATIO	111	118	104		105	99	117	110	EPD	5.7	-1.5	21.0	22.7	5.8	16.3	3.0	0.1	-0.50	-0.10	-0.034	38.58	22.72	
CONTEMP	6	6	2		2	2	2	2	ACC	0.30				0.29		0.18	0.49				--	--	
ADJ. TRAIT	71	630	866	39	10.26	3.15	0.27	0.34															

69

GMR MR 762

REG#: C1151394 DNA: NE01800465 SV
BRAND: GMR 762 DOB: 4/14/21

GOLDEN MEADOWS RANCH LLC

DARK RED MOT UL | HORNS



- ** CF SUGAR BRITCHES 040
- CF CORTEZ 374/5
- ** LOGAN'S BENGAL BABY 134/0
- ** *FUSION 578/3
- WAYNE BRYANT WB 17/3
- RAFTER S LOGAN'S ANNA 44/9
- ** L2 CAPTAIN SUGAR 12/02
- ** OASIS 655
- ** *LOGAN 62M27
- ** *BENGAL BABY 93/05
- ** *TABASCO 3018K10
- ** PHANTOM'S DIAMOND 119/9
- INNOVATOR 657/6
- F & P RANCH 61

- Cortez is coming to the 2023 offering with consistency and productivity
- High WW ratio and outstanding milk EPD producing the massive \$M index
- \$M and milk EPD in top 10% with solid REA and IMF results

PERFORMANCE TEST & GRADING SCORES			
Beginning WDA Ratio	107.97	Visual Grading Ratio	99.29
Gain Test ADG Ratio	119.76	TOTAL Ratio Score	102.52
Ultrasound Scan Ratio	102.48		

INDIVIDUAL PERFORMANCE RECORDS								EXPECTED PROGENY DIFFERENCES								ULTRASOUND EPDs			INDEXES				
	BW	WW	YW	SCROTAL AS OF 1/30/23	REA	%IMF	RIB FAT	RUMP FAT		CE	BW	WW	YW	MILK	TM	MCE	SC	REA	%IMF	RIB FAT	\$T	\$M	
RATIO	91	116	100		100	100	100	100	EPD	1.1	1.3	26.2	29.8	11.1	24.2	2.4	0.4	-0.05	0.04	-0.018	52.41	27.31	
CONTEMP	7	3	1		1	1	1	1	ACC	0.32				0.30		0.18	0.46				--	--	
ADJ. TRAIT	80	634	1025	40	11.85	3.99	0.26	0.41															

70

CF 412/1

REG#: C1149974 DNA: 21121057869 PV
BRAND: CF 412/1 DOB: 3/19/21

COLLIER FARMS
RED | HORNS



TANK 376 *DOUBLE L 7008
COLLIER FARMS CF 500/8 *FIVE V TANKS MOMMA VINSON 934
SUGAR IN THE EVENING 60/07 ** SYNERGY 84/95
SUGAR TIME 34/03
CF DREAM CATCHER 914 ** L2 CAPTAIN SUGAR 12/02
** OASIS 655
CAIN DAY DREAM 530Z ** CJ'S SOUL MAN 168
*MISS CJ 530 MAXINE 15-0

- The natural calf out of High Tide's dam, Cain Day Dream 530Z and a Tank son
- Sire brings in the performance of Tank with maternal of Sugar in the Evening
- As expected, Big REA of 13.34 and impressive IMF of 4.23% with nice \$T

PERFORMANCE TEST & GRADING SCORES			
Beginning WDA Ratio	106.15	Visual Grading Ratio	98.41
Gain Test ADG Ratio	121.01	TOTAL Ratio Score	102.47
Ultrasound Scan Ratio	108.67		

INDIVIDUAL PERFORMANCE RECORDS									EXPECTED PROGENY DIFFERENCES								ULTRASOUND EPDs			INDEXES		
	BW	WW	YW	SCROTAL AS OF 1/30/23	REA	%IMF	RIB FAT	RUMP FAT		CE	BW	WW	YW	MILK	TM	MCE	SC	REA	%IMF	RIB FAT	\$T	\$M
RATIO	107	92	100		100	100	100	100										0.16	-0.22	-0.025	88.95	5.40
CONTEMP	2	2	1		1	1	1	1	EPD	1.8	0.9	21.6	52.7	10.9	21.7	2.7	0.1					
ADJ. TRAIT	78	511	1021	42.5	13.34	4.23	0.32	0.41	ACC	0.31				0.28		0.18	0.48				--	--

71

CF 481/1

REG#: C1150035 DNA: 21121059035 SV
BRAND: CF 481/1 DOB: 3/17/21

COLLIER FARMS
DARK RED | HORNS



NEW DIMENSION 805 V - SEVEN 501
SAN GABRIEL BEEFMASTERS 13/5 V - SEVEN 1673
SHE'S A LEGACY 426/8 ** *LOGAN 62M27
** LADY LEGACY 338/12
TOTALLY TABASCO 681/7 ** *TABASCO 3018K10
COLLIER FARMS 371/3
WAYNE BRYANT WB 39/5 COLLIER FARMS 1000/7
C F RANCHES CF 420/1 HILLTOP RANCH 906-6

- New Dimension and She's A Legacy go to work with Tabasco blood for maternal
- Donor, She's A Legacy, is 15 years old and still producing at Collier Farms
- Massive 15.78" REA coming from New Dimension teamed with big \$M index

PERFORMANCE TEST & GRADING SCORES			
Beginning WDA Ratio	106.80	Visual Grading Ratio	101.71
Gain Test ADG Ratio	103.54	TOTAL Ratio Score	102.44
Ultrasound Scan Ratio	102.11		

INDIVIDUAL PERFORMANCE RECORDS									EXPECTED PROGENY DIFFERENCES								ULTRASOUND EPDs			INDEXES		
	BW	WW	YW	SCROTAL AS OF 1/30/23	REA	%IMF	RIB FAT	RUMP FAT		CE	BW	WW	YW	MILK	TM	MCE	SC	REA	%IMF	RIB FAT	\$T	\$M
RATIO	97	103	101		122	69	108	62										0.52	-0.44	-0.041	70.73	24.55
CONTEMP	8	8	8		7	7	7	7	EPD	1.5	1.5	32.7	43.2	7.9	24.3	2.7	0.4					
ADJ. TRAIT	87	655	978	43	15.78	2.14	0.27	0.21	ACC	0.31				0.28		0.17	0.47				--	--

72

SWB 02221

REG#: C1135779 DNA: NE01727683 SV
BRAND: SWB 2221 DOB: 2/17/21

BOUNDS SWINGING B RANCH
RED | HORNS



MCLESTER 4521 J & K 1001
SWB PETERBILT 08718 KENT MINDEMANN 95
GYPSY LADY 33 CF DREAM CATCHER 914
CAINS MS CASEY 4-35 938X
SUGAR DREAM 1180 CF DREAM CATCHER 914
MISS LEIGH ANN II CLONE 625-1
HT CHAPMAN 659 COLLIER FARMS 776/7
H T CHAPMAN 148/2 HUGH T. CHAPMAN 96/5

- A larger framed bull that is deep and smooth made
- SWB Peterbilt continues to deliver the carcass and EPD performance
- Monster REA of 15.73 with high IMF and huge \$T in top 10%

PERFORMANCE TEST & GRADING SCORES			
Beginning WDA Ratio	100.17	Visual Grading Ratio	102.15
Gain Test ADG Ratio	95.71	TOTAL Ratio Score	102.36
Ultrasound Scan Ratio	112.72		

INDIVIDUAL PERFORMANCE RECORDS									EXPECTED PROGENY DIFFERENCES								ULTRASOUND EPDs			INDEXES		
	BW	WW	YW	SCROTAL AS OF 1/30/23	REA	%IMF	RIB FAT	RUMP FAT		CE	BW	WW	YW	MILK	TM	MCE	SC	REA	%IMF	RIB FAT	\$T	\$M
RATIO	101	109	113		124	113	115	83										0.91	0.06	-0.025	114.96	21.49
CONTEMP	12	4	3		3	3	3	3	EPD	2.5	0.7	37.1	65.4	11.3	29.8	2.1	0.8					
ADJ. TRAIT	71	576	1031	40	15.73	3.74	0.3	0.34	ACC	0.31	0.61			0.25		0.17	0.45				--	--

73

CF 336/1

REG#: C1158254 DNA: 9518035578 PV
BRAND: CF 336/1 DOB: 2/28/21

COLLIER FARMS

RED | HORNS



NEW DIMENSION 805 V - SEVEN 501
V - SEVEN 1673
CF TROUBADOR 879/3 ** *LOGAN 62M27
*CF RAQUEL 933/9 JUNGLE WHISPER 49/1
CF PRIME 8 140/5 ** *LOGAN 62M27
*MISS SUPERIOR 8
COTTAGE FARM CF LADY 8 ** INFINITY 120/96
CF VIVID OASIS 713 ** OASIS 655

- This same mating with Troubador and Lady 8 produces outstanding females
- An impeccable combination of maternal lines and herd sire producers
- Impressive YW and IMF performance in a dark red, easy to like package

PERFORMANCE TEST & GRADING SCORES			
Beginning WDA Ratio	109.42	Visual Grading Ratio	102.59
Gain Test ADG Ratio	101.05	TOTAL Ratio Score	102.24
Ultrasound Scan Ratio	93.79		

INDIVIDUAL PERFORMANCE RECORDS								
	BW	WW	YW	SCROTAL AS OF 1/30/23	REA	%IMF	RIB FAT	RUMP FAT
RATIO	84	90	104		84	100	110	129
CONTEMP	5	5	5		5	5	5	5
ADJ. TRAIT	92	534	1035	46	10.36	3.38	0.22	0.36

EXPECTED PROGENY DIFFERENCES																ULTRASOUND EPDs			INDEXES	
	CE	BW	WW	YW	MILK	TM	MCE	SC	REA	%IMF	RIB FAT	\$T	\$M							
EPD	0.5	2.1	26.5	47.2	9.3	22.5	2.4	0.6	-0.06	-0.03	-0.028	81.84	14.37							
ACC	0.31				0.27		0.17	0.50				--	--							

74

H BAR 1108

REG#: C1164344 DNA: 9518034186
BRAND: H- 1108 DOB: 1/25/21

H-BAR BEEFMASTERS

DARK RED | HORNS



** VISION 905 ** *LOGAN 62M27
** PENELOPE 293J11
COLLIER FARMS CF 593/6
MAIDEN SUGAR 52/02
RED BULL 511
7C 609/16
COLLIER FARMS CF 508/1
TIGER J 918/7
*SPARTANS LADY GRACE 73/08

- A similar combination seen previously in offering with Vision and Maiden Sugar
- Long made and big-topped, this dark red bull has a good look and pattern
- Large REA of over 13" on a moderate YW with big milk EPD in top 15%

PERFORMANCE TEST & GRADING SCORES			
Beginning WDA Ratio	108.18	Visual Grading Ratio	104.35
Gain Test ADG Ratio	82.34	TOTAL Ratio Score	102.15
Ultrasound Scan Ratio	100.54		

INDIVIDUAL PERFORMANCE RECORDS								
	BW	WW	YW	SCROTAL AS OF 1/30/23	REA	%IMF	RIB FAT	RUMP FAT
RATIO	95	96	93		96	86	100	89
CONTEMP	18	2	2		2	2	2	2
ADJ. TRAIT	76	592	979	32	13.08	3.09	0.27	0.31

EXPECTED PROGENY DIFFERENCES																ULTRASOUND EPDs			INDEXES	
	CE	BW	WW	YW	MILK	TM	MCE	SC	REA	%IMF	RIB FAT	\$T	\$M							
EPD	2.7	0.5	16.0	26.5	11.2	19.2	3.2	-0.2	-0.07	-0.12	-0.032	45.21	14.80							
ACC	0.17				0.20		0.04	0.28				--	--							

75

CF 539/1

REG#: C1158379 DNA: 21121059093 PV
BRAND: CF 539/1 DOB: 1/11/21

COLLIER FARMS

RED | HORNS



CF DREAM CATCHER 914 ** L2 CAPTAIN SUGAR 12/02
** OASIS 655
WB SOLUTION 67/6 ** *LOGAN 62M27
** *BENGAL BABY 93/05
** *SPARTACUS 86/653
** *APHRODITE 852
KING PIN BF950
PRINCESS JACKIE 1325
L2 CAPTAIN JACK 43/07
JACKLIN 94/10 L2 SIMPLY SUGAR 78/99

- One of our more favorite matings at Collier Farms with Solution over Princess Jackie
- Super long bodied and clean made, easy to use on any herd
- Massive WW of 726 and even better \$M index in top 4% of the breed

PERFORMANCE TEST & GRADING SCORES			
Beginning WDA Ratio	91.44	Visual Grading Ratio	106.11
Gain Test ADG Ratio	95.21	TOTAL Ratio Score	102.13
Ultrasound Scan Ratio	91.84		

INDIVIDUAL PERFORMANCE RECORDS								
	BW	WW	YW	SCROTAL AS OF 1/30/23	REA	%IMF	RIB FAT	RUMP FAT
RATIO	104	100	85		84	96	83	90
CONTEMP	13	13	13		13	13	13	13
ADJ. TRAIT	82	726	797	40	9.9	3.3	0.2	0.28

EXPECTED PROGENY DIFFERENCES																ULTRASOUND EPDs			INDEXES	
	CE	BW	WW	YW	MILK	TM	MCE	SC	REA	%IMF	RIB FAT	\$T	\$M							
EPD	4.0	0.9	32.6	33.3	7.8	24.1	3.1	0.3	-0.42	-0.08	-0.039	57.40	31.35							
ACC	0.34				0.29		0.18	0.49				--	--							

76

CFR 220/1

REG#: C1149992 DNA: 9518022516 SV
BRAND: CF 220/1 DOB: 1/1/21

CF RANCHES
RED | HORNS



NEW DIMENSION 805 V - SEVEN 501
V - SEVEN 1673
CF TROUBADOR 879/3
*CF RAQUEL 933/9
** *LOGAN 62M27
JUNGLE WHISPER 49/1
LOGAN XL 2019 ** *LOGAN 62M27
BEEFOR 35/3
C F RANCHES CF 530/6
L2 CAPTAIN JACK 43/07
C F RANCHES CF 499/1 TIMELESS 5227

- Star-studded pedigree bull bringing in semen sires and donor dams throughout
- Balanced performance across the chart with strong REA EPD
- Big time \$M index putting him in top 10% of the breed

PERFORMANCE TEST & GRADING SCORES			
Beginning WDA Ratio	102.87	Visual Grading Ratio	104.57
Gain Test ADG Ratio	83.83	TOTAL Ratio Score	101.85
Ultrasound Scan Ratio	99.83		

INDIVIDUAL PERFORMANCE RECORDS									EXPECTED PROGENY DIFFERENCES								ULTRASOUND EPDs			INDEXES			
	BW	WW	YW	SCROTAL AS OF 1/30/23	REA	%IMF	RIB FAT	RUMP FAT		CE	BW	WW	YW	MILK	TM	MCE	SC	REA	%IMF	RIB FAT	\$T	\$M	
RATIO	100	100	100		100	100	100	100		EPD	2.5	0.6	28.6	37.2	9.0	23.3	3.2	0.5	0.31	-0.10	-0.038	64.39	25.42
CONTEMP	1	1	1		1	1	1	1		ACC	0.29				0.28		0.17	0.49				--	--
ADJ. TRAIT	86	621	901	41	12.15	2.49	0.17	0.22															

77

CF 523/1

REG#: C1150081 DNA: 21121059077 SV
BRAND: CF 523/1 DOB: 2/15/21

COLLIER FARMS
RED | HORNS



NEW DIMENSION 805 V - SEVEN 501
V - SEVEN 1673
COLLIER FARMS CF 204/5
*CF LEADING LADY 530/6
** *LOGAN 62M27
** LADY LEGACY 338/12
COLLIER FARMS CF 410/0
** *LOGAN 62M27
PERFECT NIRVANA 005
C F RANCHES CF 162/5
DW'S RED BULL 803
C F RANCHES CF 188/2 CLARK JONES 7-7

- Sired by a long-time herd bull in the CF program that produced growth
- Moderate birthweight with huge 748 lb. adjusted 205-day WW
- Solid test performance and strong \$M in top 20% of the breed

PERFORMANCE TEST & GRADING SCORES			
Beginning WDA Ratio	96.07	Visual Grading Ratio	103.47
Gain Test ADG Ratio	102.30	TOTAL Ratio Score	101.84
Ultrasound Scan Ratio	95.71		

INDIVIDUAL PERFORMANCE RECORDS									EXPECTED PROGENY DIFFERENCES								ULTRASOUND EPDs			INDEXES			
	BW	WW	YW	SCROTAL AS OF 1/30/23	REA	%IMF	RIB FAT	RUMP FAT		CE	BW	WW	YW	MILK	TM	MCE	SC	REA	%IMF	RIB FAT	\$T	\$M	
RATIO	105	103	95		93	99	77	76		EPD	3.4	0.6	23.8	27.5	8.0	19.9	3.1	0.2	-0.30	-0.16	-0.044	46.67	22.94
CONTEMP	15	16	15		15	15	15	15		ACC	0.31				0.29		0.17	0.48				--	--
ADJ. TRAIT	74	748	947	42	11.42	3.18	0.2	0.28															

78

CF 525/1

REG#: C1150083 DNA: 21121059079 PV
BRAND: CF 525/1 DOB: 2/8/21

COLLIER FARMS
RED | HORNS

CF RIPTIDE 875/3
** *TABASCO 3018K10
*CF RAQUEL 933/9
CF SUPERIOR TIDE 822/8
CF DREAM CATCHER 914
CJ SUPERIOR DREAM 1117
*MISS SUPERIOR 8
BIG CASINO 602
DC DEALER 006
** DANCE CREEK 804
COLLIER FARMS CF 927/7
** *TABASCO 3018K10
*COLLIER FARMS 588/3 JM 197

- Superior Tide daughters made a splash at the 2022 Advantage female sales
- Great looks and consistent milking ability are prevalent as seen by milk EPD
- Smashing WW of 765 coupled with a 13.5" REA and \$M in top 10%

PERFORMANCE TEST & GRADING SCORES			
Beginning WDA Ratio	100.67	Visual Grading Ratio	102.37
Gain Test ADG Ratio	102.30	TOTAL Ratio Score	101.79
Ultrasound Scan Ratio	98.35		

INDIVIDUAL PERFORMANCE RECORDS									EXPECTED PROGENY DIFFERENCES								ULTRASOUND EPDs			INDEXES			
	BW	WW	YW	SCROTAL AS OF 1/30/23	REA	%IMF	RIB FAT	RUMP FAT		CE	BW	WW	YW	MILK	TM	MCE	SC	REA	%IMF	RIB FAT	\$T	\$M	
RATIO	93	106	96		110	81	96	76		EPD	1.1	1.6	30.2	35.3	9.5	24.6	3.2	0.4	0.21	-0.38	-0.046	57.85	27.52
CONTEMP	15	16	15		15	15	15	15		ACC	0.31				0.26		0.17	0.45				--	--
ADJ. TRAIT	83	765	957	42	13.53	2.61	0.25	0.28															

79

CF 520/1

REG#: C1150079 DNA: 21121059074 SV
BRAND: CF 520/1 DOB: 2/28/21

COLLIER FARMS
RED | HORNS



NEW DIMENSION 805
SAN GABRIEL BEEFMASTERS 13/5
SHE'S A LEGACY 426/8
** VISION 905
COLLIER FARMS CF 460/5
*TABASCO'S CLEMENTINE 438/8

V - SEVEN 501
V - SEVEN 1673
** *LOGAN 62M27
** LADY LEGACY 338/12
** *LOGAN 62M27
** PENELOPE 293J11
** *TABASCO 3018K10
CLEMENTINE 293L23

- It's all about the momma cow here with Vision and a Pacesetter Tabasco daughter
- Growth performance sire on the top side produced for years at CF
- Balanced carcass on both REA and IMF with a \$M index in top 30% of the breed

PERFORMANCE TEST & GRADING SCORES			
Beginning WDA Ratio	84.75	Visual Grading Ratio	104.57
Gain Test ADG Ratio	102.30	TOTAL Ratio Score	101.58
Ultrasound Scan Ratio	96.77		

INDIVIDUAL PERFORMANCE RECORDS								
	BW	WW	YW	SCROTAL AS OF 1/30/23	REA	%IMF	RIB FAT	RUMP FAT
RATIO	100	100	100		100	100	100	100
CONTEMP	1	1	1		1	1	1	1
ADJ. TRAIT	76	606	841	39	11.68	3.22	0.23	0.21

EXPECTED PROGENY DIFFERENCES										ULTRASOUND EPDs			INDEXES	
	CE	BW	WW	YW	MILK	TM	MCE	SC	REA	%IMF	RIB FAT	\$T	\$M	
EPD	2.3	1.3	22.6	27.9	6.7	18.0	3.4	-0.1	-0.14	-0.29	-0.054	46.28	18.04	
ACC	0.29				0.29		0.17	0.48				--	--	

80

CF 517/1

REG#: C1150077 DNA: 21121059071 PV
BRAND: CF 517/1 DOB: 1/5/21

COLLIER FARMS
RED | HORNS



CF DREAM CATCHER 914
WB SOLUTION 67/6
** LOGAN'S BENGAL BABY 134/0
TANK 376
COLLIER FARMS CF 216/7
KISS OF A TIGER 941

** L2 CAPTAIN SUGAR
** OASIS 655
** *LOGAN 62M27
** *BENGAL BABY 93/05
*DOUBLE L 7008
*FIVE V TANKS MOMMA VINSON 934
** *PAINTED TIGER 3-390
COTTAGE FARM 850

- A muscular long bodied bull with lots of stretch and growth
- High IMF scan results with a 3.65 ratio 107 with moderate rib fat level
- Giant \$M index value in the top 5% of the breed

PERFORMANCE TEST & GRADING SCORES			
Beginning WDA Ratio	92.62	Visual Grading Ratio	103.47
Gain Test ADG Ratio	96.71	TOTAL Ratio Score	101.34
Ultrasound Scan Ratio	99.73		

INDIVIDUAL PERFORMANCE RECORDS								
	BW	WW	YW	SCROTAL AS OF 1/30/23	REA	%IMF	RIB FAT	RUMP FAT
RATIO	98	93	85		92	107	85	78
CONTEMP	20	20	17		13	13	13	13
ADJ. TRAIT	81	677	862	41	11.7	3.65	0.22	0.29

EXPECTED PROGENY DIFFERENCES										ULTRASOUND EPDs			INDEXES	
	CE	BW	WW	YW	MILK	TM	MCE	SC	REA	%IMF	RIB FAT	\$T	\$M	
EPD	1.6	1.0	30.0	36.0	10.6	25.6	2.4	0.5	-0.16	-0.07	-0.033	62.14	29.02	
ACC	0.34				0.29		0.18	0.48				--	--	

WB Solution 67/6
Sire of Lot 80

81

CF 506/1

REG#: C1150068 DNA: 21121059060 SV
BRAND: CF 506/1 DOB: 2/27/21

COLLIER FARMS
RED | HORNS



TANK 376
COLLIER FARMS CF 101/7
SUGAR SHANA 645-6
** VISION 905
COLLIER FARMS CF 674/4
*CF SASSY 8993

*DOUBLE L 7008
*FIVE V TANKS MOMMA VINSON 934
** BLACK JACK 21
LITTLE V 7-98
** *LOGAN 62M27
** PENELOPE 293J11
** *FUSION 578/3
CF SASSY MOMMA 528

- Tank and Sugar Shana were a unique combination of show ring and growth genetics
- Growth is evident with a crushing 733 lb. WW and 1.3"/cwt REA
- As expected, strong maternal traits from Vision and Sassy with \$M in top 25%

PERFORMANCE TEST & GRADING SCORES			
Beginning WDA Ratio	92.69	Visual Grading Ratio	102.81
Gain Test ADG Ratio	102.30	TOTAL Ratio Score	101.24
Ultrasound Scan Ratio	97.73		

INDIVIDUAL PERFORMANCE RECORDS								
	BW	WW	YW	SCROTAL AS OF 1/30/23	REA	%IMF	RIB FAT	RUMP FAT
RATIO	95	101	98		101	96	95	103
CONTEMP	4	3	3		3	3	3	3
ADJ. TRAIT	90	733	941	38	12.21	3.12	0.2	0.32

EXPECTED PROGENY DIFFERENCES										ULTRASOUND EPDs			INDEXES	
	CE	BW	WW	YW	MILK	TM	MCE	SC	REA	%IMF	RIB FAT	\$T	\$M	
EPD	3.7	0.0	21.1	28.0	8.4	19.0	2.4	0.5	-0.09	-0.07	-0.028	48.16	20.95	
ACC	0.31				0.30		0.18	0.47				--	--	

82

CF 483/1

REG#: C1150039 DNA: 21121059037 SV
BRAND: CF 483/1 DOB: 2/26/21

COLLIER FARMS

RED | HORNS



NEW DIMENSION 805
SAN GABRIEL BEEFMASTERS 13/5
SHE'S A LEGACY 426/8
JT TRUE GRIT 563
J & T FARM JT 2216
JT KOALA BEAR JT59

V - SEVEN 501
V - SEVEN 1673
** *LOGAN 62M27
** LADY LEGACY 338/12
** L2 CAPTAIN SUGAR 12/02
** OASIS 655
CF SUGAR BEAR 933
CLARK JONES 8705

- Impressive balance of \$value indexes with both \$T and \$M in top 30%
- Heavy individual growth performance with WW and YW ratios of 106 & 107
- Pedigree is loaded with donor females top and bottom including She's A Legacy

PERFORMANCE TEST & GRADING SCORES			
Beginning WDA Ratio	101.83	Visual Grading Ratio	99.95
Gain Test ADG Ratio	113.52	TOTAL Ratio Score	101.17
Ultrasound Scan Ratio	96.73		

INDIVIDUAL PERFORMANCE RECORDS								EXPECTED PROGENY DIFFERENCES								ULTRASOUND EPDs			INDEXES				
	BW	WW	YW	SCROTAL AS OF 1/30/23	REA	%IMF	RIB FAT	RUMP FAT		CE	BW	WW	YW	MILK	TM	MCE	SC	REA	%IMF	RIB FAT	\$T	\$M	
RATIO	96	106	107		93	100	108	115															
CONTEMP	8	8	8		7	7	7	7	EPD	2.0	1.9	35.6	50.4	5.7	23.5	2.0	0.3	-0.25	-0.23	-0.032	84.78	20.89	
ADJ. TRAIT	88	672	1035	40	11.95	3.09	0.27	0.39	ACC	0.31				0.28		0.17	0.47				--	--	

83

CF 487/1

REG#: C1158368 DNA: 21121059041 PV
BRAND: CF 487/1 DOB: 2/1/21

COLLIER FARMS

RED | HORNS



WPR'S CAPONE 1333
WALLEN PRAIRIE RANCH WPR'S 1726
*WPR'S ONE HOTT MOMMA II 1416
CF GALVESTON 414/5
COLLIER FARMS CF 868/8
CJ SUPERIOR DREAM 1117

WPR'S HEY JACK 1127
WPR'S BOMBSHELL 1042
** *WPR'S THE TOTAL PACKAGE 7595
** *WPR'S ANNABELLE 1248
NEW DIMENSION 805
CF LOGAN'S LOVE 617/1
CF DREAM CATCHER 914
*MISS SUPERIOR 8

- Early growth bull with a super heavy 205 WW of 778lbs and EPD to back it
- Balanced carcass performance with a 12.5% REA and 3.28% IMF
- Chart topping milk EPD, solid REA EPD and top 10% \$M index

PERFORMANCE TEST & GRADING SCORES			
Beginning WDA Ratio	101.58	Visual Grading Ratio	103.91
Gain Test ADG Ratio	82.34	TOTAL Ratio Score	101.09
Ultrasound Scan Ratio	99.57		

INDIVIDUAL PERFORMANCE RECORDS								EXPECTED PROGENY DIFFERENCES								ULTRASOUND EPDs			INDEXES			
	BW	WW	YW	SCROTAL AS OF 1/30/23	REA	%IMF	RIB FAT	RUMP FAT		CE	BW	WW	YW	MILK	TM	MCE	SC	REA	%IMF	RIB FAT	\$T	\$M
RATIO	101	107	104		106	95	104	74														
CONTEMP	13	13	13		13	13	13	13	EPD	0.3	1.3	31.1	42.3	12.4	28.0	2.9	0.2	0.26	-0.20	-0.044	72.03	26.96
ADJ. TRAIT	85	778	971	40	12.46	3.28	0.25	0.23	ACC	0.31				0.25		0.17	0.48				--	--

84

SWB 05821

REG#: C1164445 DNA: NE02302848 DV
BRAND: SWB 5821 DOB: 3/15/21

BOUNDS SWINGING B RANCH

RED | HORNS



LYSSY'S HONEY BADGER 104/746
SWB 09718
SWB DOTSY 76-10
EMS FIRE HOUSE 261
BAILEY FARM 1550
CLARK JONES 26/11

LYSSY'S PINNACLE 92/465
VFF MS 9/2
BULLET PROOF 864
BLACK STACI 420
BONFIRE 8038
EMS STYLISH JEZZY 849
** INFINITY 120/96
LAURIE BABY 14/2

- A big-boned, deep-sided embryo bull with a massive ADG test ratio
- Moderate birth weight bull with a WW ratio of 119 and YW over 1000
- Commendable carcass performance and huge \$M in top 5%

PERFORMANCE TEST & GRADING SCORES			
Beginning WDA Ratio	98.61	Visual Grading Ratio	99.29
Gain Test ADG Ratio	119.02	TOTAL Ratio Score	100.98
Ultrasound Scan Ratio	97.17		

INDIVIDUAL PERFORMANCE RECORDS								EXPECTED PROGENY DIFFERENCES								ULTRASOUND EPDs			INDEXES			
	BW	WW	YW	SCROTAL AS OF 1/30/23	REA	%IMF	RIB FAT	RUMP FAT		CE	BW	WW	YW	MILK	TM	MCE	SC	REA	%IMF	RIB FAT	\$T	\$M
RATIO	103	119	100		100	100	100	100														
CONTEMP	7	5	1		1	1	1	1	EPD	3.3	0.4	26.7	40.4	8.8	22.2	1.9	0.6	-0.11	-0.06	-0.030	69.79	20.89
ADJ. TRAIT	70	523	1015	39	12.05	3.11	0.28	0.28	ACC	0.31				0.26		0.17	0.47				--	--



85

SWB 04121

REG#: C1136490 DNA: NE02302629 PV
BRAND: SWB 4121 DOB: 3/19/21

BOUNDS SWINGING B RANCH

RED | HORNS



MCLESTER 4521 J & K 1001
KENT MINDEMANN 95

SWB PETERBILT 08718 CF DREAM CATCHER 914
GYPSY LADY 33 CAINS MS CASEY 4-35 938X
CF DREAM CATCHER 914 ** L2 CAPTAIN SUGAR 12/02
MISS CJ 16/17 ** OASIS 655
CF CLEOPATRA 524 ** SPARTACUS 86/653
CF DEJA VU178

- Probably the most balanced carcass bull in offering with a 13.78 REA and 4.8 % IMF
- Stout \$T index in top 35% coming from YW and REA EPD's
- Outstanding maternal genetics on bottom with Oasis and Déjà vu

PERFORMANCE TEST & GRADING SCORES			
Beginning WDA Ratio	93.36	Visual Grading Ratio	100.39
Gain Test ADG Ratio	99.69	TOTAL Ratio Score	100.97
Ultrasound Scan Ratio	113.93		

INDIVIDUAL PERFORMANCE RECORDS									EXPECTED PROGENY DIFFERENCES								ULTRASOUND EPDs			INDEXES			
	BW	WW	YW	SCROTAL AS OF 1/30/23	REA	%IMF	RIB FAT	RUMP FAT		CE	BW	WW	YW	MILK	TM	MCE	SC	REA	%IMF	RIB FAT	\$T	\$M	
RATIO	101	88	100		100	100	100	100															
CONTEMP	12	3	1		1	1	1	1	EPD	3.3	0.0	20.1	46.8	8.7	18.8	2.9	0.3	0.33	-0.04	-0.038	81.69	6.79	
ADJ. TRAIT	71	496	961	38	13.78	4.81	0.23	0.32	ACC	0.32	0.63			0.28		0.17	0.47				--	--	

86

CF 499/1

REG#: C1150058 DNA: 21121059053 SV
BRAND: CF 499/1 DOB: 3/15/21

COLLIER FARMS

RED | POLLED

TANK 376 *DOUBLE L 7008
COLLIER FARMS CF 290/7 *FIVE V TANKS MOMMA VINSON 934
INFINITE OASIS 020 L2 CAPTAIN LUCEY 116/01
** OASIS 655
** VISION 905 ** *LOGAN 62M27
COLLIER FARMS CF 463/5 ** PENELOPE 293J11
SIMPLY SECRET 414 ** *PAINTED TIGER 3-390
** SECRET SENSATION 276

- Impressive pedigree top and bottom, loaded with breed greats
- Great IMF scan results with a 3.53% and an REA/cwt of 1.2"
- Solid WW data and a strong YW pushing 1,000 lbs.

PERFORMANCE TEST & GRADING SCORES			
Beginning WDA Ratio	104.12	Visual Grading Ratio	100.61
Gain Test ADG Ratio	99.80	TOTAL Ratio Score	100.75
Ultrasound Scan Ratio	99.35		

INDIVIDUAL PERFORMANCE RECORDS									EXPECTED PROGENY DIFFERENCES								ULTRASOUND EPDs			INDEXES		
	BW	WW	YW	SCROTAL AS OF 1/30/23	REA	%IMF	RIB FAT	RUMP FAT		CE	BW	WW	YW	MILK	TM	MCE	SC	REA	%IMF	RIB FAT	\$T	\$M
RATIO	99	100	101		92	114	108	121														
CONTEMP	8	8	8		7	7	7	7	EPD	3.8	0.4	22.3	38.0	8.9	20.1	2.7	0.5	-0.37	-0.01	-0.025	65.95	15.90
ADJ. TRAIT	85	632	980	45	11.84	3.53	0.27	0.41	ACC	0.31				0.29		0.17	0.48				--	--

87

CFR 528/1

REG#: C1150088 DNA: 21121059082 PV
BRAND: CF 528/1 DOB: 2/17/21

CF RANCHES

RED | HORNS

TANK 376 *DOUBLE L 7008
COLLIER FARMS CF 101/7 *FIVE V TANKS MOMMA VINSON 934
SUGAR SHANA 645-6 ** BLACK JACK 21
LITTLE V 7-98
COLLIER FARMS CF 412/0 ** *LOGAN 62M27
CF RANCHES CF 927/4 ** PENELOPE 293J11
COLLIER FARMS CF 149/0 MESQUITE RED 71/6
B C E 2072

- A moderate frame score bull with long flat top-line and good muscling
- Higher milk EPD and stout WW individual performance
- Great scan data with a big REA and solid IMF; \$M in top 20%

PERFORMANCE TEST & GRADING SCORES			
Beginning WDA Ratio	96.65	Visual Grading Ratio	100.83
Gain Test ADG Ratio	104.79	TOTAL Ratio Score	100.70
Ultrasound Scan Ratio	99.74		

INDIVIDUAL PERFORMANCE RECORDS									EXPECTED PROGENY DIFFERENCES								ULTRASOUND EPDs			INDEXES		
	BW	WW	YW	SCROTAL AS OF 1/30/23	REA	%IMF	RIB FAT	RUMP FAT		CE	BW	WW	YW	MILK	TM	MCE	SC	REA	%IMF	RIB FAT	\$T	\$M
RATIO	101	102	98		98	104	88	59														
CONTEMP	8	8	8		7	7	7	7	EPD	2.9	0.2	22.9	31.5	10.1	21.5	2.7	0.3	-0.08	-0.10	-0.032	54.00	21.84
ADJ. TRAIT	84	648	954	42	12.69	3.2	0.22	0.2	ACC	0.31				0.27		0.17	0.46				--	--

88

V7 103/21

REG#: C1148662 DNA: 41817023760 SV
BRAND: V7 103/21 DOB: 3/10/21

**V - SEVEN
RED | SCURS**



COLLIER FARMS CF 410/0

COLLIER FARMS CF 961/7

*TRIPLE B 1-4

CF COWBOY COOL 872/3

V - SEVEN 2053/16

V - SEVEN 1865/2

** LOGAN 62M27
PERFECT NIRVANA 005

LOGAN'S LEADER 653/7

W FIVE 867

NEW DIMENSION 805

ENDLESS OASIS 179

COLLIER FARMS 617/9

V - SEVEN 1609

- Scurred POLLED bull by proven herd sire with a double shot of Logan
- Good balanced EPD profile with great calving ease, high milk, and big WW
- Huge \$M index value in top 2% of the breed

PERFORMANCE TEST & GRADING SCORES

Beginning WDA Ratio	93.98	Visual Grading Ratio	102.81
Gain Test ADG Ratio	91.07	TOTAL Ratio Score	100.15
Ultrasound Scan Ratio	96.73		

INDIVIDUAL PERFORMANCE RECORDS

	BW	WW	YW	SCROTAL AS OF 1/30/23	REA	%IMF	RIB FAT	RUMP FAT
RATIO	100	110	95		90	97	86	46
CONTEMP	14	6	2		2	2	2	2
ADJ. TRAIT	71	624	874	44	11.49	3.3	0.18	0.11

EXPECTED PROGENY DIFFERENCES

ULTRASOUND EPDs

INDEXES

	CE	BW	WW	YW	MILK	TM	MCE	SC	REA	%IMF	RIB FAT	\$T	\$M
EPD	5.6	-0.4	32.6	33.1	11.8	28.1	3.0	0.4	-0.27	-0.04	-0.037	57.60	37.31
ACC	0.31				0.26		0.17	0.46				--	--

89

SWB 13221

REG#: C1155184 DNA: NE02378134 PV
BRAND: SWB 13221 DOB: 5/5/21

**BOUNDS SWINGING B RANCH
RED | HORNS**

NEW DIMENSION 805

SWB LUCKENBACH 08614

AUTUMN'S GIRL 31-10

CF DREAM CATCHER 914

GYPSY LADY 33

CAINS MS CASEY 4-35 938X

V - SEVEN 501
V - SEVEN 1673

BULLET PROOF 864

JAZZIE 293L55

** L2 CAPTAIN SUGAR 12/02

** OASIS 655

CASEY 4-35

CCC MISS BLK BAYOU 8938

- SWB Luckenbach and the Gypsy Lady donor cow paired up well
- Low birthweight and calving ease bull with a high milk EPD
- Impressive carcass performance with a 13.3 REA and 3.79 IMF ratio 111

PERFORMANCE TEST & GRADING SCORES

Beginning WDA Ratio	91.42	Visual Grading Ratio	101.49
Gain Test ADG Ratio	92.64	TOTAL Ratio Score	100.04
Ultrasound Scan Ratio	105.86		

INDIVIDUAL PERFORMANCE RECORDS

	BW	WW	YW	SCROTAL AS OF 1/30/23	REA	%IMF	RIB FAT	RUMP FAT
RATIO	103	91	102		111	111	100	122
CONTEMP	4	5	4		4	4	4	4
ADJ. TRAIT	69	402	941	40	13.39	3.79	0.27	0.6

EXPECTED PROGENY DIFFERENCES

ULTRASOUND EPDs

INDEXES

	CE	BW	WW	YW	MILK	TM	MCE	SC	REA	%IMF	RIB FAT	\$T	\$M
EPD	3.5	-0.4	19.5	40.4	10.0	19.8	3.0	0.0	0.67	0.02	-0.038	71.65	11.24
ACC	0.31				0.28		0.17	0.48				--	--

90

TCR CITADEL

REG#: C1141916 DNA: 102120010563 SV
BRAND: TCR 1102 DOB: 2/14/21

**THREE CROSSES RANCH
RED | HORNS**



CF TROUBADOR 879/3

CF FORT WORTH 711/8

COLLIER FARMS CF 137/4

HABANERO 31/951

TCR POPPY 5201

ROSEBUD 1/8

NEW DIMENSION 805
*CF RAQUEL 933/9

** FUSION 578/3

COLLIER FARMS 981/7

CF FRENCH CONNECTION 142

** MISS TABASCO 929/4

** INFINITY 120/96

CLAMON'S CIRCLE C 9/4

- Super dark red, big muscled bull with tons of thickness and power
- Extra sound structure and flex, ready for big country range conditions
- Balanced growth and carcass performance with great maternal genetics in pedigree

PERFORMANCE TEST & GRADING SCORES

Beginning WDA Ratio	93.37	Visual Grading Ratio	101.71
Gain Test ADG Ratio	99.80	TOTAL Ratio Score	100.03
Ultrasound Scan Ratio	95.18		

INDIVIDUAL PERFORMANCE RECORDS

	BW	WW	YW	SCROTAL AS OF 1/30/23	REA	%IMF	RIB FAT	RUMP FAT
RATIO	97	102	106		100	88	105	114
CONTEMP	2	2	2		2	2	2	2
ADJ. TRAIT	73	637	889	41	10.68	3.44	0.22	0.32

EXPECTED PROGENY DIFFERENCES

ULTRASOUND EPDs

INDEXES

	CE	BW	WW	YW	MILK	TM	MCE	SC	REA	%IMF	RIB FAT	\$T	\$M
EPD	2.4	0.8	17.1	23.8	6.9	15.5	2.9	0.1	-0.07	-0.13	-0.034	40.60	14.37
ACC	0.31	0.60	0.57	0.55	0.25	0.36	0.17	0.47				--	--

91

CF 276/1

REG#: C1149842 DNA: 9518022562
BRAND: CF 276/1 DOB: 1/6/21

COLLIER FARMS

RED | HORNS



- Dark red bull with moderation and balance – easy to like
- Sire produces gorgeous females with depth and capacity and style
- Long line of Collier Farms brood cows on bottom including Tiger Baby

V - SEVEN 301
V - SEVEN 1423
V - SEVEN 601/16
V - SEVEN 1624
COLLIER FARMS CF 408/0
CF RANCHES CF 232/5
COLLIER FARMS 371/8

CARLTON'S 011
SEVEN-C ANDERSON CATTLE 911
** *LOGAN 62M27
*TIGER BABY 684
V - SEVEN 214
COLLIER FARMS 702/3

PERFORMANCE TEST & GRADING SCORES			
Beginning WDA Ratio	101.64	Visual Grading Ratio	102.15
Gain Test ADG Ratio	90.42	TOTAL Ratio Score	99.85
Ultrasound Scan Ratio	91.43		

INDIVIDUAL PERFORMANCE RECORDS								EXPECTED PROGENY DIFFERENCES								ULTRASOUND EPDs			INDEXES				
	BW	WW	YW	SCROTAL AS OF 1/30/23	REA	%IMF	RIB FAT	RUMP FAT		CE	BW	WW	YW	MILK	TM	MCE	SC	REA	%IMF	RIB FAT	\$T	\$M	
RATIO	107	92	90		85	89	96	84															
CONTEMP	14	14	3		3	3	3	3	EPD	3.7	-0.5	8.0	4.7	7.2	11.2	2.9	0.0	-0.38	-0.15	-0.049	7.60	15.83	
ADJ. TRAIT	73	538	931	41	10.38	3.02	0.26	0.31	ACC	0.31				0.24		0.17	0.44				--	--	

92

SWB 13321

REG#: C1155185 DNA: NE02378135 PV
BRAND: SWB 13321 DOB: 5/6/21

BOUNDS SWINGING B RANCH

RED | SCURS



- Stylish patterned bull with long lines and attractive look
- Scurred POLLED bull with POLLED genetics top and bottom
- Impressive WW and YW ratios with \$M index in top 40%

CJ'S BANDELERO 960
BULLET PROOF 864
** OASIS 655
CF DREAM CATCHER 914
*POLLED SEXY DREAM 531Z
MISS CJ 531

** CJ'S DESPERADO 530
WORK OF ART 507
** CAVALIER 19/5
** SEX LIFE 388
** L2 CAPTAIN SUGAR 12/02
** OASIS 655
** CJ'S SOUL MAN 168
FANCY TIGER 7-058

PERFORMANCE TEST & GRADING SCORES			
Beginning WDA Ratio	97.74	Visual Grading Ratio	99.29
Gain Test ADG Ratio	109.20	TOTAL Ratio Score	99.77
Ultrasound Scan Ratio	95.75		

INDIVIDUAL PERFORMANCE RECORDS								EXPECTED PROGENY DIFFERENCES								ULTRASOUND EPDs			INDEXES				
	BW	WW	YW	SCROTAL AS OF 1/30/23	REA	%IMF	RIB FAT	RUMP FAT		CE	BW	WW	YW	MILK	TM	MCE	SC	REA	%IMF	RIB FAT	\$T	\$M	
RATIO	96	116	109		94	94	133	69															
CONTEMP	4	5	4		4	4	4	4	EPD	1.6	1.5	24.7	37.1	7.7	20.0	2.8	0.1	-0.26	-0.14	-0.045	63.47	16.25	
ADJ. TRAIT	74	511	1006	38	11.39	3.2	0.36	0.34	ACC	0.32				0.38		0.19	0.51				--	--	

93

CF 351/1

REG#: C1150029 DNA: 9518035563 SV
BRAND: CF 351/1 DOB: 2/12/21

COLLIER FARMS

RED | HORNS

** *FUSION 578/3
WAYNE BRYANT WB 79/7
C F RANCHES CF 230/5
RED EAGLE 3289
COLLIER FARMS CF 504/6
COLLIER FARMS CF 504/0

** *TABASCO 3018K10
** PHANTOM'S DIAMOND 119/9
COLLIER FARMS CF 408/0
LYSSY & SONS 8/2
** CAVALIER 19/5
TIGER FARRAH 293H10
JESSE 120-7
** MISS TP 021/6

- Super calving ease specialist with proven heifer safe bulls top and bottom
- Strong milk EPD in the top 20% coming from Fusion
- 1.26"/cwt REA and IMF above 3%

PERFORMANCE TEST & GRADING SCORES			
Beginning WDA Ratio	90.41	Visual Grading Ratio	104.13
Gain Test ADG Ratio	86.23	TOTAL Ratio Score	99.76
Ultrasound Scan Ratio	92.02		

INDIVIDUAL PERFORMANCE RECORDS								EXPECTED PROGENY DIFFERENCES								ULTRASOUND EPDs			INDEXES				
	BW	WW	YW	SCROTAL AS OF 1/30/23	REA	%IMF	RIB FAT	RUMP FAT		CE	BW	WW	YW	MILK	TM	MCE	SC	REA	%IMF	RIB FAT	\$T	\$M	
RATIO	100	79	85		83	89	88	76															
CONTEMP	8	8	8		8	8	8	8	EPD	3.9	0.4	-1.0	3.8	10.9	10.4	3.4	-0.5	-0.73	-0.20	-0.049	5.23	4.40	
ADJ. TRAIT	77	507	834	40.5	10.46	3.07	0.21	0.25	ACC	0.32				0.26		0.17	0.45				--	--	

94

GMR GRAINGER 756

REG#: C1151389 DNA: NE01800459 PV
BRAND: GMR 756 DOB: 4/4/21

GOLDEN MEADOWS RANCH LLC
DARK RED MOT UL | HORNS



** CF SUGAR BRITCHES 040

** L2 CAPTAIN SUGAR 12/02

** OASIS 655

CF CORTEZ 374/5

** LOGAN'S BENGAL BABY 134/0

** *LOGAN 62M27

** *BENGAL BABY 93/05

** *LOGAN 62M27

QUASAR 991

JEZABELLE 62J8

CF LOGAN'S DIAMOND MAIDEN 160/4

DIAMOND MAIDEN 1931/4

** CAVALIER 19/5

L2 MAIDEN LADY 154/00

- One of the best bred bulls of the offering putting LBB with Diamond Maiden
- Consistent growth bull in a dark red, easy to like package
- Ample carcass traits with a 13" REA, IMF over 3% : \$ M in top 25%

PERFORMANCE TEST & GRADING SCORES

Beginning WDA Ratio	97.14	Visual Grading Ratio	98.85
Gain Test ADG Ratio	101.05	TOTAL Ratio Score	99.11
Ultrasound Scan Ratio	100.99		

INDIVIDUAL PERFORMANCE RECORDS

	BW	WW	YW	SCROTAL AS OF 1/30/23	REA	%IMF	RIB FAT	RUMP FAT
RATIO	96	100	100		100	100	100	100
CONTEMP	2	1	1		1	1	1	1
ADJ. TRAIT	80	617	894	42	13.16	3.17	0.21	0.25

EXPECTED PROGENY DIFFERENCES

ULTRASOUND EPDs

INDEXES

	CE	BW	WW	YW	MILK	TM	MCE	SC	REA	%IMF	RIB FAT	\$T	\$M
EPD	1.0	2.1	26.2	34.4	8.4	21.5	2.5	0.5	-0.08	-0.03	-0.020	59.56	20.94
ACC	0.31				0.31		0.18	0.47				--	--

95

CF 317/1

REG#: C1158154 DNA: 9518035529 PV
BRAND: CF 317/1 DOB: 2/8/21

COLLIER FARMS
RED | HORNS



NEW DIMENSION 805

V - SEVEN 501

V - SEVEN 1673

CF TROUBADOR 879/3

*CF RAQUEL 933/9

** *LOGAN 62M27

JUNGLE WHISPER 49/1

CF RIPTIDE 875/3

** *TABASCO 3018K10

*CF RAQUEL 933/9

CF BEBE 795/7

SUGAR SHANA 645-6

** BLACK JACK 21

LITTLE V 7-98

- Troubador and CF Bebe combine to produce a real looker with consistency
- Solid growth and even better scan data with a huge REA/cwt and IMF pushing 4%
- Maybe the sleeper of the sale! - \$M index in the top 3% of the breed

PERFORMANCE TEST & GRADING SCORES

Beginning WDA Ratio	95.31	Visual Grading Ratio	98.85
Gain Test ADG Ratio	93.41	TOTAL Ratio Score	98.74
Ultrasound Scan Ratio	106.74		

INDIVIDUAL PERFORMANCE RECORDS

	BW	WW	YW	SCROTAL AS OF 1/30/23	REA	%IMF	RIB FAT	RUMP FAT
RATIO	103	97	91		97	114	74	87
CONTEMP	4	4	4		4	4	4	4
ADJ. TRAIT	75	633	882	41	13.26	3.98	0.2	0.26

EXPECTED PROGENY DIFFERENCES

ULTRASOUND EPDs

INDEXES

	CE	BW	WW	YW	MILK	TM	MCE	SC	REA	%IMF	RIB FAT	\$T	\$M
EPD	3.0	0.1	30.1	27.1	9.5	24.5	3.2	0.5	0.28	-0.01	-0.046	48.39	35.08
ACC	0.31				0.28		0.17	0.51				--	--

96

CF 495/1

REG#: C1150052 DNA: 21121059049 SV
BRAND: CF 495/1 DOB: 3/1/21

COLLIER FARMS
RED | HORNS

CF CACTUS JACK 165/3

NEW DIMENSION 805

** *MISS PEPPER JACK 74/5

COLLIER FARMS CF 722/8

COLLIER FARMS 264/8

** *LOGAN 62M27

** LADY LEGACY 338/12

SPECIAL EDITION 19/7

CATALYST 729

NOLAN RYAN N-R 5

RANCHO TRES HIJOS 40/7

*RANCHO TRES HIJOS LP 72/7

SIERRA FORTY FOUR 9116

RANCHO TRES HIJOS LP 14

- Cactus Jack back over Rancho Tres Hijos makes for a brush country tough bull
- Balanced growth and carcass performance across the chart
- Stout \$T index with above average \$M and high YW EPD values

PERFORMANCE TEST & GRADING SCORES

Beginning WDA Ratio	98.97	Visual Grading Ratio	99.29
Gain Test ADG Ratio	97.31	TOTAL Ratio Score	98.72
Ultrasound Scan Ratio	95.95		

INDIVIDUAL PERFORMANCE RECORDS

	BW	WW	YW	SCROTAL AS OF 1/30/23	REA	%IMF	RIB FAT	RUMP FAT
RATIO	101	91	96		94	94	92	109
CONTEMP	8	8	8		7	7	7	7
ADJ. TRAIT	84	580	935	42.5	12.09	2.91	0.23	0.37

EXPECTED PROGENY DIFFERENCES

ULTRASOUND EPDs

INDEXES

	CE	BW	WW	YW	MILK	TM	MCE	SC	REA	%IMF	RIB FAT	\$T	\$M
EPD	2.2	1.3	27.7	50.9	9.7	23.6	3.2	0.3	0.19	0.03	-0.018	88.79	14.33
ACC	0.31				0.28		0.17	0.46				--	--

97

CF 516/1

REG#: C1158374 DNA: 21121059070 PV
BRAND: CF 516/1 DOB: 1/9/21

COLLIER FARMS

RED | HORNS

CF DREAM CATCHER 914

** L2 CAPTAIN SUGAR 12/02
** OASIS 655

WB SOLUTION 67/6

** LOGAN'S BENGAL BABY 134/0

** *LOGAN 62M27
** *BENGAL BABY 93/05
** SPARTACUS 86/653
APHRODITE 852

KING PIN BF950

PRINCESS JACKIE 1325

JACKLIN 94/10

L2 CAPTAIN JACK 43/07
L2 SIMPLY SUGAR 78/99

- Solution back over Princess Jackie hits every time for a long made clean lined herd bull
- Embryo sisters have consistently sold at the top of Advantage female sales
- Heavy 205 WW of 715, good YW ratio and strong \$T index in top 30%

PERFORMANCE TEST & GRADING SCORES

Beginning WDA Ratio	100.27	Visual Grading Ratio	98.85
Gain Test ADG Ratio	102.30	TOTAL Ratio Score	98.20
Ultrasound Scan Ratio	87.53		

INDIVIDUAL PERFORMANCE RECORDS

	BW	WW	YW	SCROTAL AS OF 1/30/23	REA	%IMF	RIB FAT	RUMP FAT
RATIO	82	99	103		91	66	83	77
CONTEMP	13	13	13		13	13	13	13
ADJ. TRAIT	105	715	967	40	10.73	2.28	0.2	0.24

EXPECTED PROGENY DIFFERENCES

ULTRASOUND EPDs

INDEXES

	CE	BW	WW	YW	MILK	TM	MCE	SC	REA	%IMF	RIB FAT	\$T	\$M
EPD	0.0	3.4	31.7	49.4	8.4	24.2	3.0	0.3	-0.33	-0.24	-0.039	83.17	16.70
ACC	0.34				0.29		0.18	0.49				--	--

98

SWB 09121

REG#: C1154648 DNA: NE0172788 PV
BRAND: SWB 9121 DOB: 1/10/21

BOUNDS SWINGING B RANCH

RED | HORNS

*DOC 2D-0C81

** *L BAR 5502
PHALLON 512/7

808 GAME DAY

*CAIN 5123

REACTION OF 956 729 253
CASEY 0-47
CJ'S BANDELERO 960
** OASIS 655

BULLET PROOF 864

SWB DOTSY 76-10

BLACK STACI 420

** BLACK JACK 21
MISS STACI 927

- A long-made bull with extra rib shape and clean lines in an attractive pattern
- SWB Dotsy brings home the maternal genetics while Game Day ups the performance
- Great REA/cwt and IMF carcass measures with low rib fat : Big \$T and \$M values



PERFORMANCE TEST & GRADING SCORES

Beginning WDA Ratio	89.38	Visual Grading Ratio	99.51
Gain Test ADG Ratio	98.16	TOTAL Ratio Score	98.18
Ultrasound Scan Ratio	97.75		

INDIVIDUAL PERFORMANCE RECORDS

	BW	WW	YW	SCROTAL AS OF 1/30/23	REA	%IMF	RIB FAT	RUMP FAT
RATIO	97	89	95		97	87	90	112
CONTEMP	5	5	3		3	3	3	3
ADJ. TRAIT	79	469	920	40	12.04	3.2	0.17	0.47

EXPECTED PROGENY DIFFERENCES

ULTRASOUND EPDs

INDEXES

	CE	BW	WW	YW	MILK	TM	MCE	SC	REA	%IMF	RIB FAT	\$T	\$M
EPD	1.5	0.9	31.1	51.6	8.7	24.2	2.4	0.5	0.07	-0.06	-0.039	89.53	18.70
ACC	0.17				0.19		0.05	0.24				--	--

99

RTH 2122

REG#: C1143088 DNA: NE01592526 SV
BRAND: III 2122 DOB: 2/25/21

RANCHO TRES HIJOS LP

RED | HORNS

VMAX 649/1

** VISION 905
FUSION'S SISTER 692/7

CF ABACUS 120/7

*W FIVE 038

BLAU RANCH 665
W FIVE 867
CAIN 537
FOUNDATION BEEFMASTERS 610

CATALYST 729

RANCHO TRES HIJOS LP 30/0

** RANCHO TRES HIJOS LP 12/4

** *FORTY-FOUR 44/6
BRAUCHLE 510

- Super easy fleshing bull that started well and proved it up with high ADG ratio
- Moderate birth and big weaning weight coming off dry south Texas pastures
- Good marbling prospect with high IMF of 3.69% and milk EPD in top 5%



PERFORMANCE TEST & GRADING SCORES

Beginning WDA Ratio	95.25	Visual Grading Ratio	96.65
Gain Test ADG Ratio	109.78	TOTAL Ratio Score	98.09
Ultrasound Scan Ratio	99.29		

INDIVIDUAL PERFORMANCE RECORDS

	BW	WW	YW	SCROTAL AS OF 1/30/23	REA	%IMF	RIB FAT	RUMP FAT
RATIO	103	102	95		94	93	108	88
CONTEMP	15	15	3		3	3	3	3
ADJ. TRAIT	77	606	914	38	11.47	3.69	0.28	0.37

EXPECTED PROGENY DIFFERENCES

ULTRASOUND EPDs

INDEXES

	CE	BW	WW	YW	MILK	TM	MCE	SC	REA	%IMF	RIB FAT	\$T	\$M
EPD	4.2	-0.2	16.5	31.6	12.6	20.8	3.4	0.1	0.17	0.05	-0.024	55.95	14.98
ACC	0.31	0.63			0.31		0.18	0.48				--	--



100

A4 321

REG#: C1148576 DNA: 21121058602 SV
BRAND: A4 321 DOB: 3/20/21

A FOUR RANCH
RED MOT UL | HORNS

** VISION 905

** LOGAN 62M27

** PENELOPE 293J11

CF FIREBALL 830/5

*COLLIER FARMS 285/8

** FUSION 578/3

** SATIN RIBBON 293S28

CF JFK 830/1

** FUSION 578/3

PRIOLA 68/09

A FOUR RANCH A4 33

A FOUR RANCH 19

LOGAN'S EDGE 01/1

BEEFMASTER 60

- A very balanced and well-structured bull that is attractive in pattern and soundness
- Sire CF Fireball produces both herd bulls and outstanding heifer progeny
- As expected, big milk EPD's combine with calving ease and birthweight

PERFORMANCE TEST & GRADING SCORES

Beginning WDA Ratio	105.16	Visual Grading Ratio	99.07
Gain Test ADG Ratio	71.11	TOTAL Ratio Score	96.57
Ultrasound Scan Ratio	95.99		

INDIVIDUAL PERFORMANCE RECORDS

	BW	WW	YW	SCROTAL AS OF 1/30/23	REA	%IMF	RIB FAT	RUMP FAT
RATIO	100	100	100		100	100	100	100
CONTEMP	1	1	1		1	1	1	1
ADJ. TRAIT	73	584	844	34	10.33	3.72	0.18	0.37

EXPECTED PROGENY DIFFERENCES

ULTRASOUND EPDs

INDEXES

	CE	BW	WW	YW	MILK	TM	MCE	SC	REA	%IMF	RIB FAT	\$T	\$M
EPD	3.6	-0.5	6.9	12.1	10.4	13.8	3.0	-0.2	-0.36	0.12	-0.032	23.12	11.71
ACC	0.29	0.54	0.53	0.50	0.25	0.34	0.17	0.45				--	--

TERMS AND CONDITIONS

BIDDING: Each animal will be sold to the highest bidder without reserve.

BIDDING DISPUTE: The Auctioneer in charge will settle any dispute as to bids, and his decision on such matters shall be final.

CASH SALE: All sales are for cash unless satisfactory credit arrangements, including any possible reservation of security interest by the seller, have been made with the seller prior to sale.

BUYER'S RISK AT THE TIME OF SALE: The risk of loss and injury of each animal passes to the buyer as soon as it is sold; however, it is the obligation of the seller to ensure that sold animals are fed and cared for free of charge to the buyer until loaded for shipment or until the expiration of 24 hours after the sale, whichever occurs sooner.

CERTIFICATES OF REGISTRATION: A transferred certificate of registration must be furnished by the seller free of charge to the buyer for each animal within 65 days following the later of either the date of sale or upon the receipt of full payment.

HEALTH: Health papers suitable for interstate shipment will be furnished on all animals.

ANNOUNCEMENTS: If there is any inconsistency in information in terms of the sales materials (e.g. sale catalog, supplemental sheets, sale day announcements) 1) sale day announcements will control over both the supplement sheet and the sale catalog, and 2) the supplement sheet will control over the sale catalog.

IDENTIFICATION RESPONSIBILITIES: 1) Prior to the sale, the seller must ensure that each animal has a readable permanent identification mark (tattoo, hot-iron brand or freeze brand) corresponding to its registration identification and 2) The buyer must check all permanent identification marks for accuracy upon possession and report any discrepancies to the seller immediately.

OFFICIAL BBU INFORMATION: All existing available official BBU information, including calf source, service sire and/or potential service sires (registration numbers) and performance data may be included in the final sales catalog.

PEDIGREE, PERFORMANCE AND GENETIC INFORMATION GUARANTEES: The seller guarantees to the buyer that: 1) the pedigree, performance data and genetic information, as represented in any sales materials (including sale catalog, supplemental sheet or sale day announcement), are accurate; and, 2) all information from the BBU database is accompanied by an accurately stated "as of" date. The absence in any sales materials of a specific designation on the pedigree of an animal does not establish that the animal in question is not a carrier of such genetic defect.

BREEDING GUARANTEES:

1) The seller guarantees that all animals are breeders, with the exception of: (a) calves under 12 months of age at the time of the sale; (b) animals shown after the sale has occurred (in such cases, the breeding guarantees, if any, will be those guarantees as agreed upon between the seller and the buyer); (c) animals who suffer injury or disease following the sale; (d) animals administered any super ovulation drug or growth hormone after purchase; and, (e) animals subjected to gross negligence by or willful misconduct on the part of the buyer.

2) Bulls eighteen (18) months or older are guaranteed by the seller to have passed a Bull Breeding Soundness Evaluation (BSE) and to have been certified a satisfactory

potential breeder by a licensed veterinarian with sixty (60) days prior to sale date. Results of the BSE must be reported on a fully completed official form and attached to the health papers required for the sale.

3) If within one-hundred twenty (120) days from the date of sale, the bull has failed to pass a BSE certified by a licensed veterinarian, buyer must send seller written notification of the failure of the test within one-hundred twenty (120) days from the date of sale and include the BSE test results. Within sixty (60) days after seller's notification of the failed BSE test, buyer and seller shall identify a mutually agreeable licensed veterinarian or technician certified by a licensed veterinarian to perform another BSE on the bull at the buyer's expense. The results of the test shall be deemed final and conclusive of this matter and binding on buyer and seller. If, in the opinion of said veterinarian or technician, the bull is unable to pass a BSE and be confirmed a satisfactory potential breeder, he shall so certify in writing to the seller and the buyer which shall include the official form used by the Society of Theriogenology or the official BBU BSE form. In such event the buyer may return the bull to the farm of seller, provided the bull is in good condition and in compliance with the health requirements of the seller's state, for a refund of the full purchase price. The acceptance of the refund of the full purchase price shall in any case be deemed full satisfaction and settlement of the matter. The seller and buyer shall bear equally all reasonable and necessary transportation expenses that are incurred in returning the animal to seller. **Unless otherwise agreed by the buyer and the seller, the seller makes no guarantees with respect to the ability to freeze semen.**

PRIVILEGES OF RETURN OR ADJUSTMENT OPTIONS:

1) With the exception of any applicable transportation expenses described herein, a seller shall never be liable to a buyer for an amount greater than the original selling price of any animal sold under these Sales Terms and Conditions.

2) Unless otherwise stated, all claims for adjustment or refund must be made in writing to the seller within 180 days following the sale of the animal in question.

3) If an animal is claimed to be a non-breeder, the animal may be returned to the seller if it is in a good condition and complies with the health requirements of the seller's state. At the option of the buyer, the seller may issue a credit to the buyer for use in a future purchase or provide an animal of equal value subject to the approval of buyer. If the buyer exercises either such option, the claim shall be deemed fully and satisfactorily resolved. However, in the event that the buyer requests a refund of the purchase price, the seller may, at its option, either issue a refund of the full purchase price or, shall have 180 days from the date the animal is returned to the seller's farm to conduct a trial to demonstrate the returned animal is a breeder. Refund of the full purchase price or demonstrated proof that the animal is a breeder during the test trial shall be deemed full satisfaction and settlement of the claim. Any expense incurred for transporting an animal claimed to be a non-breeder will be the responsibility of the buyer, except that the seller will be responsible for transportation costs in excess of the distance between the buyer's farm and the location where the sale took place. If the seller proves the animal to be a breeder, it will be the obligation of the buyer to take delivery of the animal and pay all transportation expenses.

4) If an animal is sold and subsequently becomes ineligible for registration under the rules of BBU for reasons other than incorrect parentage, the seller must make a satisfactory adjustment on the purchase price to the buyer, or at the option of the buyer, refund the purchase price upon the return of the animal to the farm of the seller.

5) If an animal (including the offspring of a pregnant recipient) is sold and through

parentage verification is proven to have incorrect parentage, as represented by the animal's certificate of registration, and for which correct parentage can be determined, the seller is obligated to make a satisfactory adjustment on the purchase price to the buyer or, at the buyer's option, refund the purchase price upon the return of the animal to the farm of the seller. Any claim for adjustment or refund under this paragraph must be made in writing to the seller on or before the first anniversary of the date of the sale.

6) Unless stated otherwise, all transportation expenses incurred will be the responsibility of the buyer, except that the seller will be responsible for transportation costs in excess of the distance between the buyer's farm and the location where the sale took place.

GENETIC DEFECTS AND FACTORS: REQUIRED DISCLOSURES RELATING TO CERTAIN TEST RESULTS OR POTENTIAL CARRIER STATUS OF AN ANIMAL:

1) In advance of any sales of an animal, the seller shall have the affirmative duty to notify any potential buyer of any test results in which an animal for sale has tested positive (under a test and at a laboratory approved by BBU) as a carrier of any genetic defect or genetic factor recognized by BBU.

MISCELLANEOUS:

1) The above terms and conditions of sale constitute a contract between the buyer and the seller and are equally binding upon both parties. Each sale or resale of an animal constitutes a separate transaction.

2) Neither BBU nor any director, officer, employee or representative of BBU or any of its related entities shall be liable in any way with respect to a transaction conducted under these Sales Terms and Conditions; nor shall BBU, its directors, officers, employees or representatives be responsible in any way for enforcing the terms and conditions of any agreement between a buyer and a seller. Each buyer and seller agree to hold BBU, its directors, officers, employees, representatives and related entities harmless from all damages, expenses, claims, losses and other liabilities associated with a transaction conducted under these Suggested Sales Terms and Conditions.

3) No sponsor, sale manager, or other person connected with the management of a sale shall be liable in any way with respect to transactions conducted under these Sales Terms and Conditions.

4) These sale terms and conditions and all rights, obligations and duties arising hereunder and all disputes arising hereunder will be construed in accordance with, and governed by, the laws of the state in which the sale occurs, without giving effect to such state's choice of law rules.

5) UNLESS OTHERWISE EXPRESSLY STATED IN THESE SALE TERMS AND CONDITIONS OR ANY OTHER WRITTEN AGREEMENT BETWEEN THE PARTIES RELATING TO THE SALE OR BEEFMASTER, BEEFMASTER ADVANCER, EG OR UPGRADING CATTLE UNDER THESE SALE TERMS AND CONDITIONS, SELLER MAKES NO OTHER WARRANTIES, EXPRESS OR IMPLIED, INCLUDING ANY IMPLIED WARRANTY OF MERCHANTABILITY OR FITNESS FOR A PARTICULAR PURPOSE, EVEN IF SUCH PURPOSE IS KNOWN TO THE PARTIES. THE REMEDIES PROVIDED IN THESE SALE TERMS AND CONDITIONS ARE THE EXCLUSIVE REMEDIES OF THE BUYER, OR ANY PARTY CLAIMING THROUGH THE BUYER, AND UNDER NO CIRCUMSTANCES WILL THE SELLER BE LIABLE FOR ANY INCIDENTAL, INDIRECT, SPECIAL, CONSEQUENTIAL, PUNITIVE OR EXEMPLARY DAMAGES UNDER ANY INDEMNITY PROVISION OR OTHERWISE.

NOTES



A series of horizontal lines for writing notes, consisting of 25 evenly spaced lines.



2008 Tommelson Creek Rd.
Brenham, TX 77833



Thank You
for Attending the
Advantage PLUS
Performance Bull Sale